



**Peace Corps Volunteer  
2009 Annual Volunteer Survey**

**Benin  
October 7, 2009**

**Office of Strategic Information, Research and Planning**

## Table of Contents

<b>Introduction to the 2009 Annual Volunteer Survey Report .....</b>	<b>3</b>
<b>Overview of the Post's 2009 Volunteer Survey Respondents.....</b>	<b>4</b>
<b>A. Applying to the Peace Corps.....</b>	<b>7</b>
<b>B. Preparation for the Peace Corps.....</b>	<b>9</b>
<b>C. Your Peace Corps Assignment .....</b>	<b>11</b>
<b>D. Training for Peace Corps Assignment .....</b>	<b>16</b>
<b>E. Volunteer Assignment Goals and Impact.....</b>	<b>19</b>
<b>F. Peace Corps Support.....</b>	<b>27</b>
<b>G. Your Safety and Security .....</b>	<b>33</b>
<b>H. Volunteers Working in HIV/AIDS .....</b>	<b>42</b>
<b>I. Your Life in the Peace Corps .....</b>	<b>43</b>
<b>J. Overall Assessment of Peace Corps Service .....</b>	<b>47</b>
<b>K. Activities After Peace Corps Service.....</b>	<b>56</b>

## **Introduction to the 2009 Annual Volunteer Survey Report**

This country report contains the tables and charts from the Volunteers in your country who completed the 2009 Annual Volunteer Survey (AVS). The results provide a picture of the activities, experiences and views of Peace Corps Volunteers in 2009. The results show areas where Volunteers' needs are met and identify areas where improvements may be needed. The survey was fielded from May through August 2009.

A core set of questions was asked of all Volunteers. For the first time, Volunteers were also asked a series of questions relevant to their time in country:

- Volunteers in country 8 or less months were asked about applying to and preparing for the Peace Corps.
- Volunteers in country 18 or less months were asked about the effectiveness of their pre-service training (PST).
- Volunteers in country 19 or more months were asked about their post-service plans, as well as the Peace Corps' resources for their post-service transition.

Tables and graphs are labeled by survey section and the survey question. The tables show the percent of post respondents that selected each choice and the total number of post respondents that answered the question. The number of responses for each question will vary, depending on:

- whether the question was asked of all Volunteers or only the Volunteers in-country a certain number of months and
- how many of the Volunteers who were "eligible" to answer the question did respond.

Most survey questions asked respondents to select only one from a set of choices. The percentages for the "select one" responses add up to 100 percent. Other questions asked Volunteers to "mark all that apply" in situations, for example, where it is likely that respondents are involved in more than one secondary activity. The percentages of the "mark all that apply" responses will total more than 100 percent; each percentage equals the number of respondents selecting that choice divided by the number of respondents who answered the question.

Posts are encouraged to compare these 2009 results with the 2006 and 2008 survey results to note trends and changes over time. Because questions are revised from one survey to the next, a crosswalk between the 2008 and 2009 questions is posted on the OSIRP intranet page under 2009 AVS Reports "Reference Documents." The earlier 2008 survey global, regional and post reports are also posted on the OSIRP Intranet page.

Volunteers' extensive narrative responses to the 29 open-ended questions on the survey are in the post's 2009 Annual Volunteer Survey Open Ended Responses report. All Volunteers' narrative responses to key questions will be analyzed for global themes and presented in a later report.

The number of surveys for each post includes surveys submitted online by Volunteers and completed paper surveys sent to the Peace Corps headquarters for hand-entry into the online survey system. The final count may include mostly completed partial surveys added to the final dataset after the survey closed.

## **Overview of the Post's 2009 Volunteer Survey Respondents**

This overview presents basic information about the characteristics of Volunteers who completed the 2009 Annual Volunteer Survey at post.

**Completed Surveys by Months in Country**

	8 months or less		9 to 18 months		19 months or more		Total	
	Number	Percent	Number	Percent	Number	Percent	Number	Percent
Months3grp	1	1%	41	55%	33	44%	75	100%

**L1: What is your age?**

	20-29	30-49	50+	Total
AGE3grp	96%	3%	1%	70

**L2: What is your gender?**

	Female	Male	Total
GENDER	69%	31%	75

**Completed surveys by project.**

	Count	Column N %
Environmental Action	14	19%
Secondary Education	29	39%
Rural Community Health	17	23%
Small Enterprise		
Development/Information and Communication	13	17%
Other. Please specify	2	3%
Total	75	100%

**C2: Which best describes the focus of your primary assignment/work?**

		Percent	Number
C2	English teaching	37%	28
	Business education/advising	11%	8
	Health extension	11%	8
	Environmental education	9%	7
	Other: Please specify	8%	6
	Forestry/parks	4%	3
	NGO development	4%	3
	Youth development	3%	2
	HIV/AIDS	3%	2
	Information & communications technology (ICT)	3%	2
	Community development	3%	2
	Agriculture/fish/livestock	3%	2
	Water sanitation	1%	1
	Other education	1%	1
	Urban & regional planning/municipal development		
	Teacher training		
	Math/science teaching		
	Agroforestry		
	Total	100%	75

**C2.TEXT: Which of the following initiatives does your primary work include? Other (specify)**

	PERCENT	NUMBER	
C2.TEXT	Open-ended results. Not responsive to request.		
			Total

## A. Applying to the Peace Corps

*This section reports Volunteers' motivations in applying and accepting a Peace Corps assignment.*

**A1: How important were the following factors in accepting a PC assignment?**

	Not Important	Somewhat important	Important	NA	Total
Different culture			100%		1
Work experience			100%		1
Help others			100%		1
International experience			100%		1
Language		100%			1
Personal growth			100%		1
U. S. job market		100%			1
Serve my country		100%			1
Travel/adventure		100%			1
Other: Please specify below			100%		1

**A1\_OTHER: How important were the following factors in accepting a PC assignment? Other (specify)**

	PERCENT	NUMBER
A1_OTHE Open-ended results. Not responsive to request.		
Total	100%	75

**A2. What prompted you to apply to the PC? Mark all that apply.**

	PCV Responses	% Involved in Initiative	Total PCVs Responding
What prompted you to apply to PC	1	100%	
Personal interest in the Peace Corps			
Returned Peace Corps Volunteer (e.g., someone you met or know personally)			
Returned Peace Corps Volunteer who spoke to your school or group about the Peace Corps			
Peace Corps recruiter			
Peace Corps campus or community information session			
Article or book about the Peace Corps			
Radio, TV, or print advertisement			
Peace Corps material in the mail			
Peace Corps website			
Other: Please specify			
Total			1

Percents may total to more than 100% since Volunteers were asked to "Mark all that apply."

**A2.OTHER.TEXT: What prompted you to apply to the PC?**

**Other (specify)**

	PERCENT	NUMBER
A2.OTHER.TEXT	100%	75
Total	100%	75



## **B. Preparation for the Peace Corps**

*This section reports on Volunteers' assessment of the materials and information available before their service.*

**B1: How useful was the information on the PC website in preparing you for the realities of living and working as a Volunteer?**

	Not at all 1	2	3	4	Extremely 5	Don't know (did not access information)	Total
B1				100%			1

**B2: How useful were the PC materials about your country in helping you prepare for your service?**

	Not at all 1	2	3	4	Extremely 5	Don't know (did not access information)	Total
B2				100%			1

**B3: How useful were the materials you received from the PC about your primary assignment in helping you prepare for your service?**

	Not at all 1	2	3	4	Extremely 5	Don't know (did not access information)	Total
B3				100%			1

**B4: How useful were the materials you received from the PC regarding the need for flexibility in adapting to your work?**

	Not at all 1	2	3	4	Extremely 5	Don't know (did not access information)	Total
B4				100%			1

**B7: How prepared do you feel to meet the challenges of PC service?**

	Not at all 1	2	3	4	Exceptionally 5	Total
B7					100%	1

## **C. Your Peace Corps Assignment**

*This section reports Volunteers' primary assignment work and secondary activities. The term "primary assignment" refers to the Volunteers' assignment which is part of an overall project plan designed by your host country partners and in-country Peace Corps staff.*

**C3: Which of the following activities does your primary assignment/work include? Mark all that apply.**

	PCV Responses	% Involved in Initiative	Total PCVs Responding
\$C3PrmAct Working with youth	41	55%	
Girls' education	38	51%	
English teaching	31	41%	
HIV/AIDS	29	39%	
Nutrition education	24	32%	
WID/GAD	22	29%	
Working with NGO(s)	21	28%	
Environment work	15	20%	
Literacy	15	20%	
Child survival	12	16%	
Microenterprise development	11	15%	
Water and sanitation	11	15%	
Business advertising	10	13%	
Income generation	10	13%	
Natural resources management	10	13%	
Working with special groups (e.g., disabled, elderly, ethnic minorities, orphans)	9	12%	
World Wise Schools/ Correspondence Match	8	11%	
Rural development	7	9%	
Community food security (production/marketing)	6	8%	
Mobilize host country nationals (HCNs) to volunteer	5	7%	

Arts	4	5%	
Information and communications technology (ICT)	4	5%	
Biodiversity conservation	3	4%	
Household food security	3	4%	
Library development	2	3%	
Other: Please specify	2	3%	
Sports/fitness	1	1%	
Urban development/municipal development	1	1%	
Total			75

Percents may total to more than 100% since Volunteers were asked to "Mark all that apply."

**C3: Which of the following activities does your primary assignment/work include? Other (specify)**

	Column N %	Count	Row N %
C3.OTHER.TE			
Open-ended results. Not responsive to request.			
Total		75	100%

**C4: Hours Spent on Primary Assignment During Average Work Week**

	None	1-10 hrs	11-20 hrs	21-30 hrs	31-40 hrs	More than 40 hrs	Total
C4Hrs6grp	4%	23%	38%	24%	9%	1%	74

**C4: How many hours do you spend on your primary assignment during an average work week?**

	All Volunteers	Average	Lowest reported	Highest reported	Did not answer
C4	75	18.4	0	45	1

**C5: Which of the following do your secondary activities (other than your primary assignment work) include? Mark all that apply.**

	PCV Responses	% Involved in Initiative	Total PCVs Responding
\$C5SecAct Working with youth	43	61%	
Girls' education	36	51%	
WID/GAD	36	51%	
English teaching	33	46%	
HIV/AIDS	27	38%	
Nutrition education	17	24%	
Working with NGO(s)	17	24%	
World Wise Schools/ Correspondence Match	17	24%	
Arts	16	23%	
Literacy	14	20%	
Sports/fitness	14	20%	
Environment work	13	18%	
Income generation	12	17%	
Information and communications technology (ICT)	9	13%	
Mobilize host country nationals (HCNs) to volunteer	8	11%	
Business advertising	7	10%	
Library development	7	10%	
Microenterprise development	7	10%	

Rural development	7	10%	
Biodiversity conservation	6	8%	
Natural resources management	6	8%	
Working with special groups (e.g., disabled, elderly, ethnic minorities, orphans)	6	8%	
Other: Please specify	6	8%	
Community food security (production/marketing)	5	7%	
Child survival	4	6%	
Urban development/municipal development	4	6%	
Household food security	3	4%	
Water and sanitation	3	4%	
Total			71

Percents may total to more than 100% since Volunteers were asked to "Mark all that apply."

**C5: Which of the following do your secondary activities include? Other (specify)**

	Column N %	Count	Row N %
C5.OTHER.TE			
Open-ended results. Not responsive to request.			
Total		75	100%

**C5: No Secondary Activities**

		Percent	Number
C5.NONE	No	95%	71
	Yes, I have no secondary activities	5%	4
	Total	100%	75

**C6: Hours Spent on Secondary Activities During Average Work Week**

	None	1-10 hrs	11-20 hrs	21-30 hrs	31-40 hrs	More than 40 hrs	Total
C6Hrs6grp		74%	21%	4%		1%	72

**C6. How many hours do you spend on secondary activities during an average work week?**

	All Volunteers	Average	Lowest reported	Highest reported	Did not answer
C6	75	9.1	1	50	3

**C7: How personally satisfying is your--?**

	Not at all 1	2	3	4	Exceptionally 5	Total
Primary assignment	11%	13%	27%	39%	11%	75
Secondary project/activities	7%	4%	32%	45%	12%	74

## **D. Training for Peace Corps Assignment**

*This section reports Volunteers' assessments of the effectiveness of their Pre-Service Training and In-Service Training at post. In-Service Training (IST) includes: Reconnect; Technical IST; Mid-Service and Close of Service conferences; project management/leadership conferences; and other post-sponsored training sessions.*

**D1: (PCVs at post 18 months or less) How effective was your Pre-Service Training (PST) in preparing you to--**

	Not effective	Poor	Adequate	Effective	Very Effective	NA/No training	Total
Manage cultural differences	2%	10%	26%	55%	7%		42
Deal with adjustment issues		5%	40%	48%	7%		42
Work with counterparts/community partners	10%	24%	36%	29%	2%		42
Use language needed in work and social interactions	5%	7%	19%	40%	26%	2%	42
Perform technical aspects of your work	10%	7%	29%	21%	33%		42
Work on your project goals and objectives	5%	10%	36%	31%	19%		42
Conduct a participatory community needs assessment (e.g., PACA)	10%	24%	17%	33%	10%	7%	42
Monitor your project goals and outcomes		17%	44%	27%	5%	7%	41
Maintain your physical health		2%	26%	48%	21%	2%	42
Maintain your mental/emotional health		10%	31%	43%	17%		42
Maintain your personal safety and security	5%	7%	29%	45%	12%	2%	42



**D5: How effective was your In-Service Training (IST) in preparing you to--**

	Not effective	Poor	Adequate	Effective	Very Effective	NA/No training	Total
Manage cultural differences		10%	41%	32%	8%	10%	73
Deal with adjustment issues		10%	32%	41%	8%	10%	73
Build and strengthen working relationships with counterparts/community partners	3%	15%	22%	44%	14%	3%	73
Use language needed in work and social interactions	5%	14%	29%	30%	7%	15%	73
Perform technical aspects of your work	3%	8%	23%	40%	26%		73
Work on your project goals and objectives	1%	8%	26%	38%	25%	1%	72
Conduct a participatory community needs assessment (e.g.,PACA)	8%	16%	29%	33%	4%	10%	73
Monitor project goals and outcomes		24%	32%	28%	12%	4%	72
Maintain your physical health		10%	33%	30%	11%	16%	73
Maintain your mental/emotional health		11%	32%	30%	14%	14%	73
Maintain your personal safety and security	4%	7%	35%	33%	8%	12%	72

**D8: Did you have this skill before joining the Peace Corps?**

	No/ No answer	Yes	Total
Skills specific to my assignment	41	33	74
Assessing community needs	52	21	73
Organizing/implementing community activities	39	35	74
Building capacity of local organizations	58	16	74
Monitoring, reporting, and evaluating my work	13	61	74
Designing and implementing training sessions	47	27	74

**D8: Is the skill needed for your Peace Corps work?**

	No/ No answer	Yes	Total
Skills specific to my assignment	5	68	73
Assessing community needs	14	59	73
Organizing/implementing community activities	8	65	73
Building capacity of local organizations	25	48	73
Monitoring, reporting, and evaluating my work	5	68	73
Designing and implementing training sessions	20	53	73

**D8: Have you had adequate Peace Corps training to acquire the skill?**

	No/ No answer	Yes	Total
Skills specific to my assignment	9	56	65
Assessing community needs	23	42	65
Organizing/implementing community activities	27	38	65
Building capacity of local organizations	31	28	59
Monitoring, reporting, and evaluating my work	13	45	58
Designing and implementing training sessions	22	35	57

## **E. Volunteer Assignment Goals and Impact**

*This section reports Volunteers' self-assessments of their impact on the individuals and organizations in the communities in which they serve. At the end of this section, Volunteers' third goal activities, participation in Coverdell World Wise School/Correspondence Match (CWWS/CM) and use of Peace Corps resources to support their work are reported in questions.*

**E1: To what extent does your Volunteer work assignment address the following?**

	Not at all 1	2	3	4	Exceptionally 5	NA	Total
Meets the objectives of the project plan	3%	8%	19%	58%	9%	3%	74
Builds local capacity for sustainability	15%	22%	34%	19%	9%	1%	74
Involves local people in planning and implementing activities	8%	24%	29%	24%	11%	4%	75
Complements other local development activities	15%	19%	33%	27%	4%	3%	75
Transfers skills to host country individuals and organizations	4%	18%	32%	32%	14%		74
Mobilizes host country nationals (HCNs) to volunteer	30%	27%	20%	14%	4%	5%	74
Helps promote a better understanding of Americans on the part of the peoples served (goal 2)	5%	7%	16%	36%	35%	1%	75
Helps promote a better understanding of other peoples on the part of Americans (goal 3)	5%	5%	29%	31%	27%	3%	75

**E2: To what extent does your host community--?**

	Not at all 1	2	3	4	Exceptionally 5	NA	Total
Need the assistance that you provided	6%	21%	30%	27%	15%		33
Want the assistance that you provided	6%	15%	33%	30%	15%		33

**E3: How much impact does your assignment have on the capacities of your host counterparts/community partners?**

	None 1	2	3	4	Exceptional 5	NA	Total
Ability to access information (e.g., library, Internet, etc.)	23%	20%	31%	13%	9%	4%	75
Leadership skills	20%	18%	34%	23%	4%	1%	74
Planning and management	9%	19%	45%	19%	7%	1%	75
Problem solving/critical thinking	11%	19%	47%	19%	4%	1%	75
Self-esteem	20%	16%	32%	19%	7%	5%	74
Technical skills	8%	16%	36%	25%	13%	1%	75
Use of local resources	18%	16%	39%	16%	7%	4%	74
Use of external resources (e.g., grants, international NGOs)	27%	23%	23%	20%	3%	4%	74
Better understanding of Americans	4%	5%	24%	43%	22%	1%	74
Other: Please specify below	5%		3%		5%	87%	39

**E3: How much impact does your assignment have on the capacities of your host counterparts/community partners? Other (specify)**

	Column N %	Count	Row N %
E3_OTHE	Open-ended results. Not responsive to request.		
Total		75	100%

**E4: How much impact does your assignment have on the capacities of your host individuals with whom you work?**

	None 1	2	3	4	Exceptional 5	NA	Total
Ability to access information (e.g., library, Internet, etc.)	18%	31%	18%	22%	6%	6%	72
Leadership skills	10%	21%	25%	31%	10%	4%	72
Planning and management	10%	28%	32%	22%	3%	6%	72
Problem solving/critical thinking	7%	10%	40%	31%	8%	4%	72
Self-esteem	7%	14%	24%	29%	22%	4%	72
Technical skills	10%	12%	38%	26%	8%	6%	72
Use of local resources	14%	23%	40%	15%	5%	3%	73
Use of external resources (e.g., grants, international NGOs)	35%	25%	19%	11%	1%	8%	72
Better understanding of Americans	3%	7%	12%	38%	36%	4%	72
Other: Please specify below	3%		3%		3%	91%	34

**E4: How much impact does your assignment have on the capacities of your host individuals with whom you work? Other (specify)**

	Column N %	Count	Row N %
E4_OTHER	100%	75	
Total		75	100%

**E5: To what extent does your assignment enhance the capacities of organizations with whom you work?**

	None 1	2	3	4	Exceptional 5	NA	Total
Identifying and prioritizing organizational needs	18%	21%	34%	19%	3%	5%	73
Leadership	18%	29%	29%	19%	1%	4%	73
Management	16%	23%	30%	18%	7%	5%	73
Monitoring and evaluation	16%	30%	30%	14%	4%	5%	73
Planning and implementing organizational activities	14%	23%	29%	25%	4%	5%	73
Teamwork/participatory decision-making	18%	21%	25%	25%	3%	7%	71
Use of local resources	14%	32%	25%	19%	3%	7%	72
Ability to mobilize, manage, and sustain local volunteers	32%	15%	26%	14%	3%	11%	73
Other: Please specify below	3%		3%	3%		92%	37

**E5: To what extent does your assignment enhance the capacities of organizations with whom you work? Other (specify)**

	Column N %	Count	Row N %
E5_OTHER	100%	75	
Total		75	100%

**E6: How effective have you been in transferring knowledge and skills to help the following persons or groups build their capacities?**

	Not at all 1	2	3	4	Exceptionally 5	NA	Total
Your counterpart/community partner	11%	19%	27%	32%	11%		74
Another institution/organization	11%	27%	31%	16%	4%	11%	74
Members of your host community	1%	15%	39%	36%	8%		74
Other: Please specify below			6%	3%	3%	88%	34

**E7: To what extent have HC individuals gained a better understanding of Americans? Includes "Too early to tell."**

	Not at all	Minimally	Moderately	Considerably	Exceptionally	Too early to tell	Total
E7	1%	4%	25%	48%	17%	4%	75

**E7: To what extent have HC individuals gained a better understanding of Americans? Excludes "Too early to tell."**

	Not at all	Minimally	Moderately	Considerably	Exceptionally	Total
E7	1%	4%	26%	50%	18%	72

**E9. In which of the following third goal activities have you participated during your PC service?**

		PCV Responses	% Doing This	Total PCVs Responding
\$E9Goal3Acts	Electronic updates	64	86%	74
	Hosting American visitors	50	68%	
	Personal website or blog	46	62%	
	Hard copy/paper update	43	58%	
	Pen pal program/letter exchange	21	28%	
	Enrollment in the CWWS/CMS program	20	27%	
	While on home leave, spoke at a school or community group	11	15%	
	Other please specify	3	4%	
	Podcasted/created a slide show or video posted online	2	3%	
	Peace Corps Week activities			
	Total			

Percents may total to more than 100% since Volunteers were asked to "Mark all that apply."

**E9: When asked about third goal activities, Volunteer answered "No involvement in third goal activities."**

	Have done third goal activities	No third goal activities	Total
Peace Corps' third goal is to "help promote a better understanding of other peoples on the part of Americans." In which of the following third goal activities, including your contact with family and friends, have you participated during your Peace Corps	99%	1%	75

**E10: Would you recommend participation in the CWWS CMS to other Volunteers?**

	I have not participated in CWWS/CM.	I have participated in CWWS/CM & would recommend it	I have participated in CWWS/CM and would NOT recommend it	Total
E10	72%	22%	6%	72

**E11: To what extent have Americans gained a better understanding of HCNs? Includes "Too early to tell."**

	Not at all	Minimally	Moderately	Considerably	Exceptionally	Too early to tell	Total
E11	0%	1%	32%	41%	23%	3%	74

**E11: To what extent have Americans gained a better understanding of HCNs? Excludes "Too early to tell."**

	Not at all	Minimally	Moderately	Considerably	Exceptionally	Total
E11		1%	33%	42%	24%	72



**E12: Which of the following resources have been useful to you in your third goal activities?**

	Yes
Coverdell World Wise Schools staff (Useful)	7
Contact with other Peace Corps staff in Washington, D.C. (Useful)	10
Information at staging (Useful)	28
Information from your post sent to you before d	30
eparture (Useful)	
Internet (Useful)	61
Invitation kits (Useful)	31
Material in staging packet (Useful)	30
Peace Corps staff at post (e.g., World Wise School contact) (Useful)	14
Recruiting (Useful)	14
Resources available from Coverdell World Wise Schools (Useful)	5
Resources available on Peace Corps website (e.g., third goal section) (Useful)	17
Training on third goal (Useful)	14
Other: Please specify below (Useful)	2

**E12: Which of the following resources would/will be helpful to you in your third goal activities?**

	Yes
Coverdell World Wise Schools staff (Would be helpful)	19
Contact with other Peace Corps staff in Washington, D.C. (Would be helpful)	13
Information at staging (Would be helpful)	14
Information from your post sent to you before departure (Would be helpful)	13
Internet (Would be helpful)	13
Invitation kits (Would be helpful)	6
Material in staging packet (Would be helpful)	8
Peace Corps staff at post (e.g., World Wise School contact) (Would be helpful)	12
Recruiting (Would be helpful)	12
Resources available from Coverdell World Wise Schools(Would be helpful)	15
Resources available on Peace Corps website (e.g., third goal section) (Would be helpful)	16
Training on third goal (Would be helpful)	19
Other: Please specify below (Would/will be helpful)	2

**E12: Other useful/helpful resources? Other (specify)**

	Column N %	Count	Row N %
E12_OTH Open-ended results. Not responsive to request.			
Total		75	100%

**E13: Do you know about the Peace Corps Partnership Program (PCPP)?**

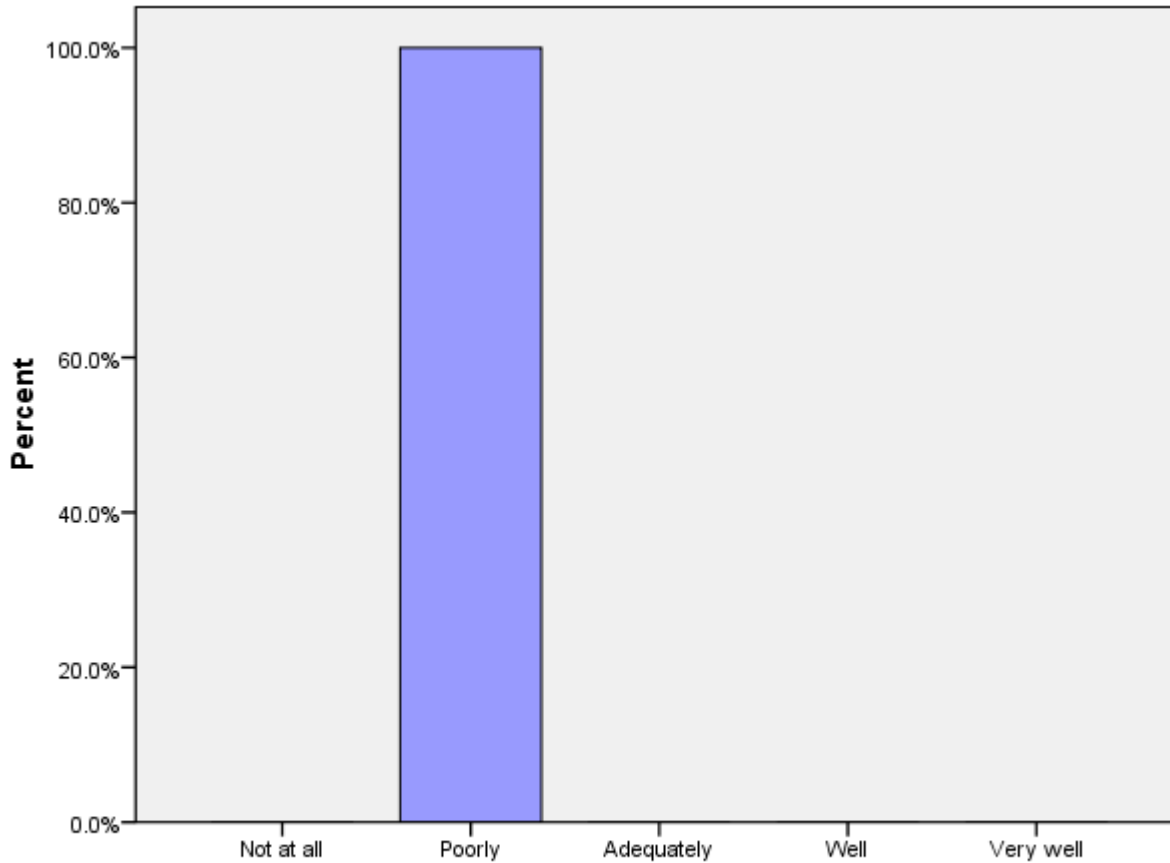
	No	Yes, but I haven't used it.	Yes, I have used it.	Total
E13	5%	72%	23%	75

## F. Peace Corps Support

*This section reports Volunteers' assessments of in-country Peace Corps.*

**F1 (PCVs at post 9+ months): How prepared for your arrival were the host people with whom you work?**

	Not at all	Poorly	Adequately	Well	Very well	Total
F1		100%				1



**F1: When you arrived at your community, how prepared for your arrival were the host people with whom you work?**

**F2: How satisfied are you with the health care you received from your PCMO(s)?**

	Not at all	Minimally	Adequately	Considerably	Exceptionally	Not Used	Total
F2		1%	17%	40%	40%	1%	75

**F3: How satisfied are you with the following support provided by in-country PC staff?**

	Not at all 1	2	3	4	Completely 5	NA	Total
Administrative/logistical	5%	16%	29%	39%	11%		75
Cross-cultural	12%	15%	37%	24%	11%	1%	75
Emotional	9%	22%	32%	23%	12%	1%	74
Feedback on my work reports	19%	21%	23%	13%	17%	7%	75
Job assignment	8%	12%	25%	36%	19%		75
Language learning	4%	16%	33%	35%	12%		75
Medical		3%	20%	43%	35%		75
Safety and security	12%	8%	21%	39%	20%		75
Site selection/preparation	13%	21%	23%	31%	12%		75
Technical skills	3%	14%	27%	41%	15%	1%	74

**F4: How satisfied are you with the Peace Corps allocation of time and resources to mental health/adjustment issues?**

	Not at all satisfied 1	2	3	4	Completely satisfied 5	Total
F4	11%	16%	27%	29%	17%	75

**F5: What level of PC support have you received to help cope with stress from issues such as HIV/AIDS, food insecurity, etc. in your community? (Including PCVs w/no need for support)**

	No support	Minimal support	Adequate support	Considerable support	Exceptional support	NA / I have no need for support	Total
F5	7%	18%	26%	9%	4%	36%	74

**F5: What level of PC support have you received to help cope with stress from issues such as HIV/AIDS, food insecurity, etc. in your community? (Excluding PCVs w/no need for support)**

	No support	Minimal support	Adequate support	Considerable support	Exceptional support	Total
F5	11%	28%	40%	15%	6%	47

**F6: How would you rate your interaction with the Country Director in terms of the following?**

	Not adequate	Adequate	Total
Responsiveness to my issues	32%	68%	72
Informative content	41%	59%	73
My comfort level discussing issues	41%	59%	73
Adequacy of visits	36%	64%	72

**F6b: How would you rate your interaction with the PTO/SRPTC in terms of the following?**

	Not adequate	Adequate	Total
Responsiveness to my issues	8%	92%	63
Informative content	11%	89%	64
My comfort level discussing issues	16%	84%	62
Adequacy of visits	29%	71%	63

**F6c: How would you rate your interaction with the APCD/Program Manager in terms of the following?**

	Not adequate	Adequate	Total
Responsiveness to my issues	18%	82%	74
Informative content	11%	89%	74
My comfort level discussing issues	21%	79%	72
Adequacy of visits	19%	81%	72

**F6d: How would you rate your interaction with the PCMO in terms of the following?**

	Not adequate	Adequate	Total
Responsiveness to my issues	10%	90%	71
Informative content	3%	97%	73
My comfort level discussing issues	5%	95%	73
Adequacy of visits	26%	74%	72

**F6e: How would you rate your interaction with the Safety and Security Coordinator in terms of the following?**

	Not adequate	Adequate	Total
Responsiveness to my issues	12%	88%	74
Informative content	18%	82%	74
My comfort level discussing issues	15%	85%	73
Adequacy of visits	30%	70%	74

**F6f: How would you rate your interaction with the Training Manager in terms of the following?**

	Not adequate	Adequate	Total
Responsiveness to my issues	6%	94%	71
Informative content	8%	92%	71
My comfort level discussing issues	10%	90%	71
Adequacy of visits	19%	81%	68

**F6g: How would you rate your interaction with administrative staff in terms of the following?**

	Not adequate	Adequate	Total
Responsiveness to my issues	22%	78%	73
Informative content	18%	82%	73
My comfort level discussing issues	32%	68%	73
Adequacy of visits	31%	69%	71

**F6h: How would you rate your interaction with other post staff (please specify) in terms of the following?**

	Not adequate	Adequate	Total
Responsiveness to my issues	50%	50%	8
Informative content	50%	50%	8
My comfort level discussing issues	86%	14%	7
Adequacy of visits	83%	17%	6

**F7: To what extent is your CD aware of Volunteer issues and concerns through interactions with Volunteers?**

	Not at all	Minimally	Adequately	Considerably	Completely	Total
F7	15%	29%	34%	22%		73

**F8: What is the most effective way you use to communicate with PC staff?**

Most effective	Cellphone (voice)	47%	35
	Text messaging	23%	17
	In-person visits	16%	12
	Email/ Internet	11%	8
	Telephone at residence or work	3%	2
	Other. Please specify		
	Telephone not at residence or work		
	Letters		
	CB radio		
Total	100%	74	

**F8: What is the second most effective way you use to communicate with PC staff?**

Second most effective	Email/ Internet	36%	27
	Text messaging	23%	17
	Cellphone (voice)	23%	17
	In-person visits	8%	6
	Telephone at residence or work	7%	5
	Telephone not at residence or work	3%	2
	Other. Please specify		
	Letters		
	CB radio		
	Total	100%	74

**F8: What is the third most effective way you use to communicate with PC staff?**

(C11_THREE) Third most effective	Email/ Internet	40%	29
	In-person visits	26%	19
	Text messaging	15%	11
	Cellphone (voice)	15%	11
	Telephone at residence or work	4%	3
	Other. Please specify		
	Telephone not at residence or work		
	Letters		
	CB radio		
	Total	100%	73

**F9: How do you rate the effectiveness of your communication resources for contacting in-country PC staff?**

	Very poor	Poor	Adequate	Good	Excellent	Total
F9	1%	7%	26%	43%	23%	74



## **G. Your Safety and Security**

*This section reports on how safe and informed about their safety Volunteers feel. Their experiences with reported and unreported crimes are summarized.*

### **G1: How safe do you feel...?**

	Not at All Safe	Often Safe	Adequately Safe	Usually Safe	Very Safe	Total
Where you live	3%	8%	17%	28%	44%	75
Where you work	1%	5%	14%	27%	53%	74
When you travel in-country	9%	25%	28%	35%	3%	75
City where main Peace Corps office is located	7%	20%	44%	25%	4%	75

### **G2: Please indicate the number of times you experienced the following types of discrimination/harassment.**

	Never	Once	2-5 times	6-10 times	11-25 times	26+ times	Total
Age	73.0%	3.2%	9.5%		4.8%	9.5%	63
Anti-American	70.8%	1.5%	15.4%	4.6%	4.6%	3.1%	65
Disability	100.0%						63
Gender	48.3%	1.7%	10.3%	1.7%	10.3%	27.6%	58
Racial/color	35.6%	1.7%	1.7%	3.4%	6.8%	50.8%	59
Religious	84.1%	3.2%	6.3%	3.2%	1.6%	1.6%	63
Sexual (verbal)	39.0%	6.8%	16.9%	6.8%	3.4%	27.1%	59
Sexual (physical)	71.0%	9.7%	19.4%				62
Sexual orientation	93.4%	4.9%	1.6%				61

**G2: Please indicate the number of times you reported discrimination/harassment events to PC.**

	Never	Once	2-5 times	6-10 times	11-25 times	26+ times	Total
Age	100.0%						16
Anti-American	100.0%						17
Gender	94.1%	2.9%	2.9%				34
Racial/color	100.0%						42
Religious	100.0%						9
Sexual (verbal)	92.1%	5.3%			2.6%		38
Sexual (physical)	77.8%	22.2%					18
Sexual orientation	100.0%						4

**G3: Please indicate the number of times you experienced the following types of crimes.**

	Never	Once	2-5 times	6-10 times	11-25 times	26+ times	Total
Burglary	90.9%	6.1%	3.0%				66
Theft	62.3%	26.1%	11.6%				69
Robbery	90.8%	9.2%					65
Physical assault	92.2%	6.2%	1.6%				64
Aggravated assault	100.0%						64
Sexual assault	93.8%	4.7%	1.6%				64
Rape	100.0%						63

**G3: Please indicate the number of times you reported the following crimes to Peace Corps.**

	Never	Once	2-5 times	6-10 times	11-25 times	26+ times	Total
Burglary		83.3%	16.7%				6
Theft	25.0%	66.7%	8.3%				24
Robbery		100.0%					6
Physical assault	75.0%	25.0%					4
Sexual assault	50.0%	50.0%					4

**G4a: If you did not report your experience with burglary, please your reason(s) for not reporting.**

		PCV Responses	% Reason Not Rptd	Total PCVs Responding
\$NoRpBurg	I felt it was too minor or common to report	1	50%	
	Other	1	50%	
	I did not think the PC could help			
	I believed it could result in changing sites			
	Concerns of a possible breach in confidentiality			
	Reporting might result in disciplinary action against me			
	It might hurt my relationship with the community			
	Total			

\*Percents may total to more than 100% since Volunteers were asked to "mark all that apply."

**G4b: If you did not report your experience with theft, please your reason(s) for not reporting.**

		PCV Responses	% Reason Not Rptd	Total PCVs Responding
\$NoRpTheft	I felt it was too minor or common to report	7	64%	
	I did not think the PC could help	6	55%	
	Other	3	27%	
	It might hurt my relationship with the community	2	18%	
	I believed it could result in changing sites			
	Concerns of a possible breach in confidentiality			
	Reporting might result in disciplinary action against me			
	Total			

\*Percents may total to more than 100% since Volunteers were asked to "mark all that apply."

**G4c: If you did not report your experience with robbery, please your reason(s) for not reporting.**

		PCV Responses	% Reason Not Rptd	Total PCVs Responding
\$NoRpRobb	Other	1	100%	
	I did not think the PC could help			
	I believed it could result in changing sites			
	I felt it was too minor or common to report			
	Concerns of a possible breach in confidentiality			
	Reporting might result in disciplinary action against me			
	It might hurt my relationship with the community			
Total			1	

\*Percents may total to more than 100% since Volunteers were asked to "mark all that apply."

**G4d: If you did not report your experience with physical assault, please your reason(s) for not reporting.**

		PCV Responses	% Reason Not Rptd	Total PCVs Responding
\$NoRpPhAs	I felt it was too minor or common to report	2	50%	
	I did not think the PC could help	1	25%	
	Concerns of a possible breach in confidentiality	1	25%	
	Reporting might result in disciplinary action against me	1	25%	
	Other	1	25%	
	I believed it could result in changing sites			
	It might hurt my relationship with the community			
	Total			

\*Percents may total to more than 100% since Volunteers were asked to "mark all that apply."

**G4: If you did not report your experience with aggravated assault, please your reason(s) for not reporting.**

	PCV Responses	% Reason Not Rptd	Total PCVs Responding
\$NoRpAgAs			
Other	1	100%	
I did not think the PC could help			
I believed it could result in changing sites			
I felt it was too minor or common to report			
Concerns of a possible breach in confidentiality			
Reporting might result in disciplinary action against me			
It might hurt my relationship with the community			
Total			1

\*Percents may total to more than 100% since Volunteers were asked to "mark all that apply."

**G4e: If you did not report your experience with sexual assault, please your reason(s) for not reporting.**

		PCV Responses	% Reason Not Rptd	Total PCVs Responding
\$NoRpSxAs	I felt it was too minor or common to report	2	50%	
	Other	2	50%	
	I did not think the PC could help	1	25%	
	I believed it could result in changing sites			
	Concerns of a possible breach in confidentiality			
	Reporting might result in disciplinary action against me			
	It might hurt my relationship with the community			
	Total			

\*Percents may total to more than 100% since Volunteers were asked to "mark all that apply."



**G4f: If you did not report your experience with rape, please your reason(s) for not reporting.**

		PCV Responses	% Reason Not Rptd	Total PCVs Responding
\$NoRpRape	Other	1	100%	
	I did not think the PC could help			
	I believed it could result in changing sites			
	I felt it was too minor or common to report			
	Concerns of a possible breach in confidentiality			
	Reporting might result in disciplinary action against me			
	It might hurt my relationship with the community			
	Total			1

\*Percents may total to more than 100% since Volunteers were asked to "mark all that apply."

## H. Volunteers Working in HIV/AIDS

*This section reports Volunteers' involvement in HIV/AIDS and their perceived effectiveness of their HIV/AIDS related activities.*

**H1: Which of the following best describes your involvement in HIV/AIDS activities?**

	HIV/AIDS work is my primary assignment.	HIV/AIDS work is part of my secondary activities.	Involved in HIV/AIDS efforts, not primary/secondary work	Not involved in any HIV/AIDS related activities	Total
H1	15%	32%	33%	20%	75

**H2: How well has PC training prepared you to undertake your HIV/AIDS activities?**

	Not at all	Poorly	Adequately	Well	Very well	NA	Total
H2	3%	7%	40%	20%	28%	2%	60

**H3: In working with HC individuals or groups, how would you rate the effectiveness of your specific HIV/AIDS activities? (Including the "Don't Know" responses)**

	Seldom effective	Sometimes effective	Often effective	Almost always effective	Don't know	Total
H3	7%	29%	39%	8%	17%	59

**H3: In working with HC individuals or groups, how would you rate the effectiveness of your specific HIV/AIDS activities? (Excluding the "Don't Know" responses)**

	Seldom effective	Sometimes effective	Often effective	Almost always effective	Total
H3	8%	35%	47%	10%	49

## **I. Your Life in the Peace Corps**

*This section reports on Volunteers' descriptions of and adjustments to their living conditions, including stress factors and how Volunteers cope with stress.*

### **I1: Have you lived with a host country individual or family?**

	Never lived with a host country individual or family	Yes, I lived with a host country individual or family only	Yes, in my community (not during PST).	Yes, both during PST and later in my community.	Total
I1	1%	69%		29%	75

### **I2: How often do you interact with HCNs in community/family social events?**

	Daily	Several times a week	Weekly	Several times a month	Monthly	Less than once a month	Total
I2	25%	25%	13%	15%	9%	12%	75

### **I3: How well can you communicate in the language used by most people in your community?**

	Not at all	Poorly	Adequately	Well	Very well	Total
I3	3%	35%	35%	19%	8%	74

### **I4: Do you have the following at your worksite?**

	Never	Sometimes or more often	Total
Electricity	37%	63%	73
Running water	60%	40%	72

**14: Do you have the following at your residence?**

	Never	Sometimes or more often	Total
Electricity	21%	79%	67
Running water	58%	42%	67

**15: How well do your PC experiences match the expectations you had before you became a Volunteer?**

	Not at all	Minimally	Moderately	Considerably	Exceptionally	Total
15	11%	12%	47%	26%	4%	73

**17: To what extent do the following create stress and/or emotional health issues for you?**

	Not at all stressful 1	2	3	4	Exceptionally stressful 5	NA	Total
Cultural issues	1%	19%	39%	27%	14%		74
Dealing with violence in country (e.g., civil unrest, domestic violence, corporal punishment)	14%	20%	16%	22%	22%	7%	74
Health/medical problems	18%	32%	32%	8%	8%	1%	74
Issues including family, friends, loved ones in U.S.	18%	31%	32%	9%	8%	1%	74
Isolation/loneliness	11%	35%	30%	18%	7%		74
Local language	20%	27%	35%	16%	1%		74
Primary assignment	7%	15%	38%	26%	15%		74
Romantic relationships in-country	39%	16%	18%	7%	1%	19%	74
Interactions with other Volunteers	42%	34%	18%	5%	1%		74
Interactions with PC Staff	26%	38%	24%	8%	4%		74
Safety and security	15%	26%	34%	14%	12%		74
Other: Please specify below	5%		10%	5%	24%	57%	21

**I8: Please mark all of the typical ways in which you cope with stress.**

	PCV Responses	% Using This Stress Reducer	Total PCVs Responding
\$I8LessStress    Talk with friends and family in US	61	82%	
Talk with PCVs outside my community	60	81%	
Pursue personal hobbies	60	81%	
Talk with PCVs in my community	52	70%	
Leave the community for a time	51	69%	
Get involved in other projects	42	57%	
Do sports	41	55%	
Talk with co-workers or friends (not PCVs)	37	50%	
Talk with PC in-country staff	17	23%	
Pray	15	20%	
Meditate	12	16%	
Do other activity (specify)	12	16%	
Talk with my host family	11	15%	
Talk with Office of Special Services staff	2	3%	
Total			74

\*Percents total to more than 100% since Volunteers were asked to "mark all that apply."

**I8: Others I talk with to reduce stress**

	Percent	Number
I8.OTHRSTE    Open-ended results. Not responsive to request.		
Total	100%	75

**I8: Other activities to reduce stress**

	Percent	Number
I8.OTHRACT.TEXT2	Open-ended results. Not responsive to request.	
Total	100%	75

**I8: When asked about ways of coping with stress, Volunteers who answered "No stress"**

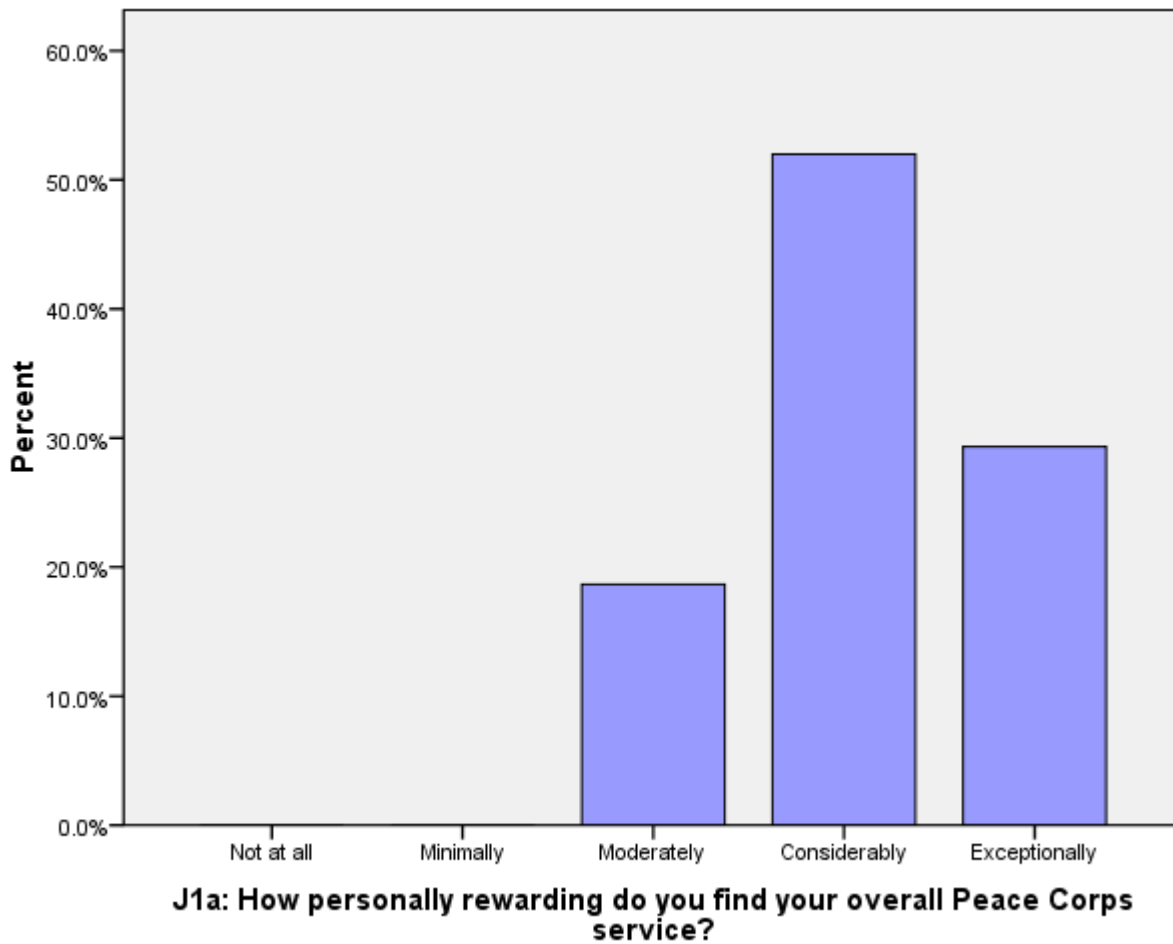
	No	Yes, I have no stress	Total
I8.NOSTRESS	100%		75

## J. Overall Assessment of Peace Corps Service

*This section reports Volunteers' level of satisfaction with their Peace Corps service and their expectations about completing their service.*

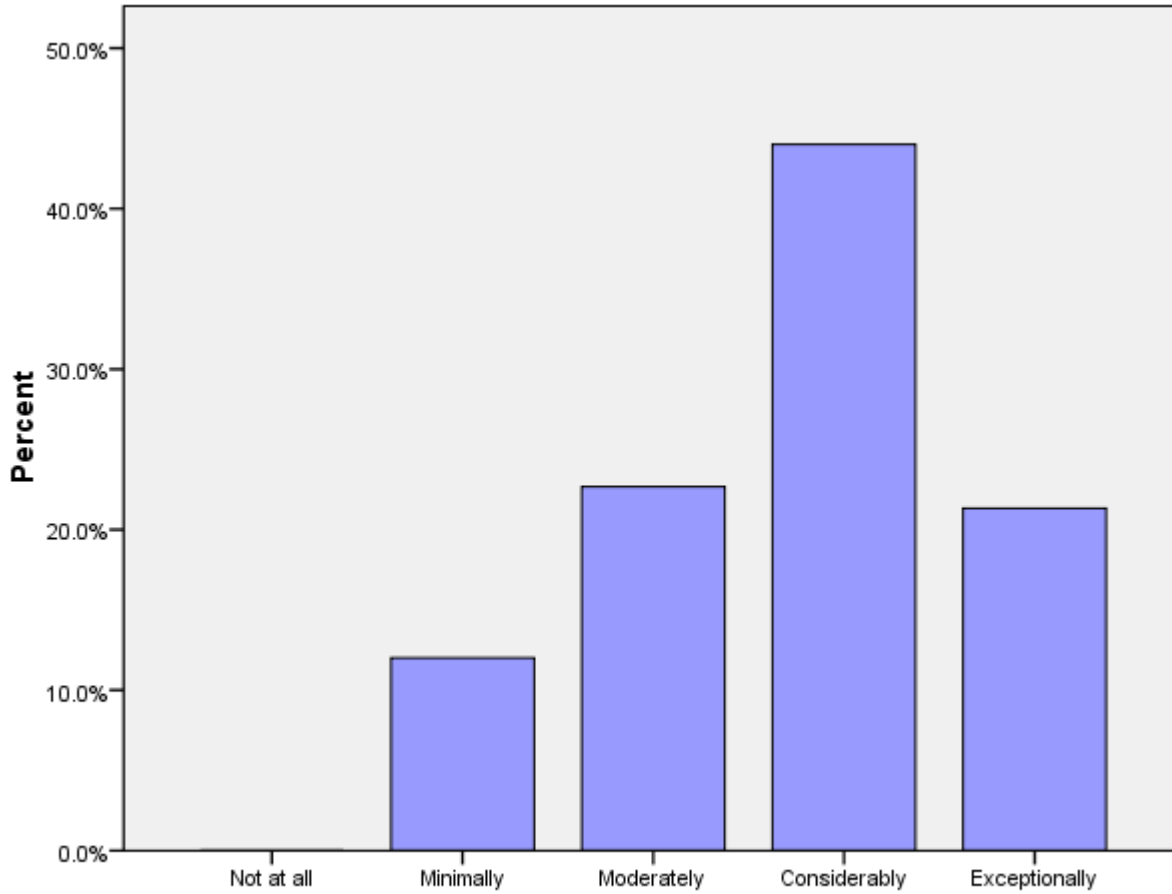
**J1a: How personally rewarding do you find your overall Peace Corps service?**

	Not at all	Minimally	Moderately	Considerably	Exceptionally	Total
J1A			19%	52%	29%	75



**J1b: How personally rewarding do you find your community involvement?**

	Not at all	Minimally	Moderately	Considerably	Exceptionally	Total
J1B		12%	23%	44%	21%	75

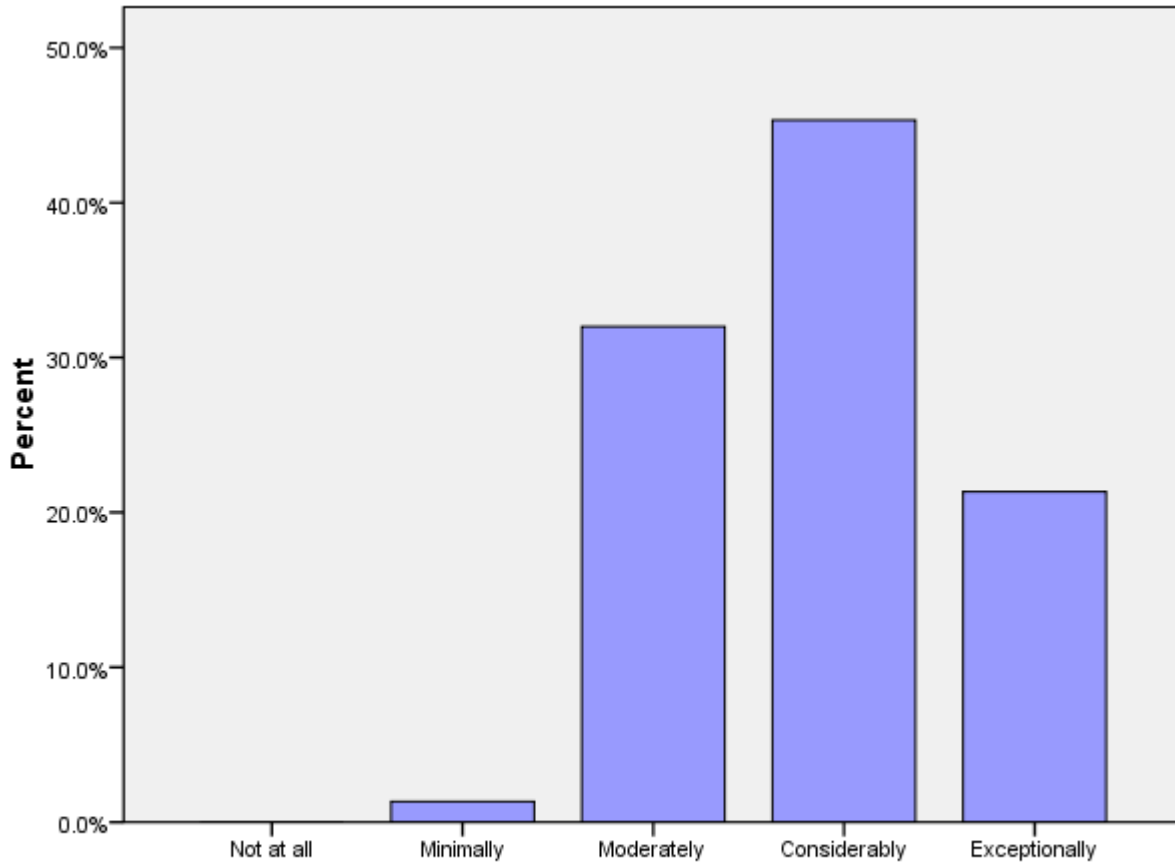


**J1b: How personally rewarding do you find your community involvement?**



**J1c: How personally rewarding do you find your experience with other Volunteers?**

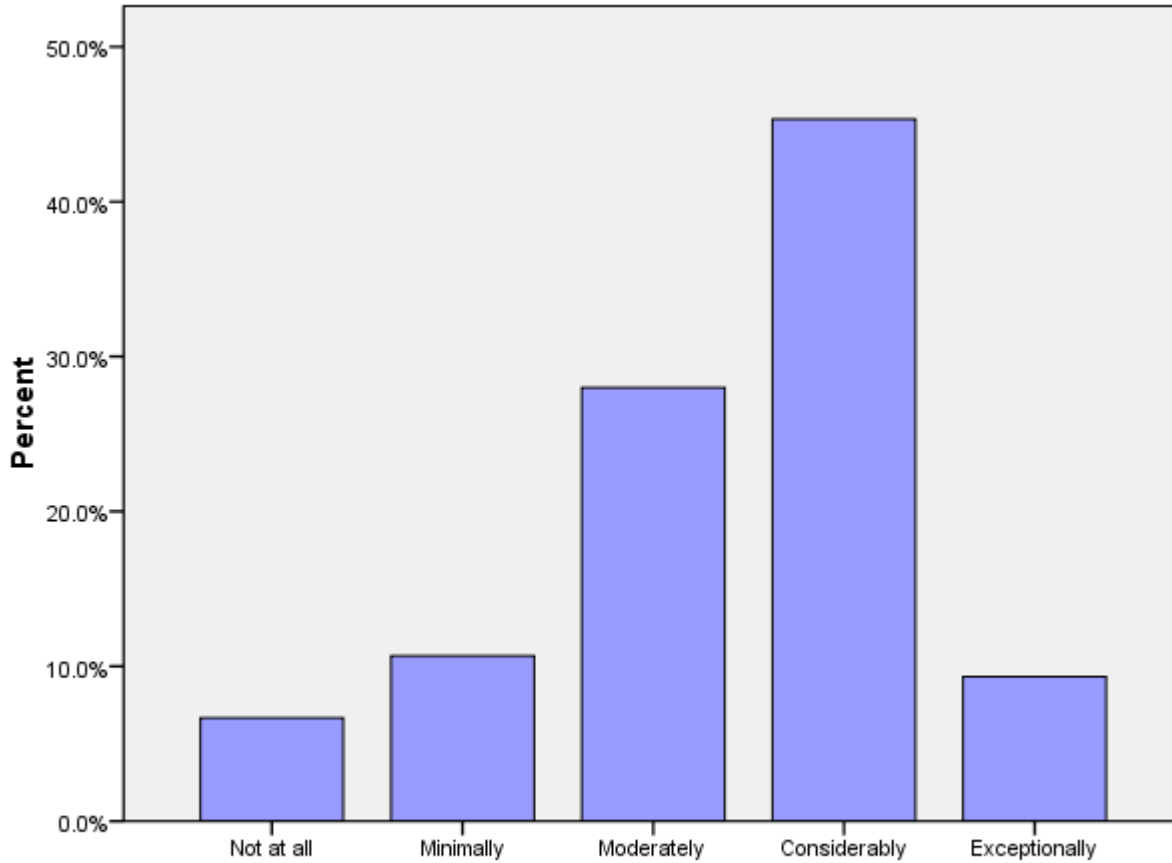
	Not at all	Minimally	Moderately	Considerably	Exceptionally	Total
J1C		1%	32%	45%	21%	75



**J1c: How personally rewarding do you find your experience with other Volunteers?**

**J1d: How personally rewarding do you find your work with counterparts/community partners?**

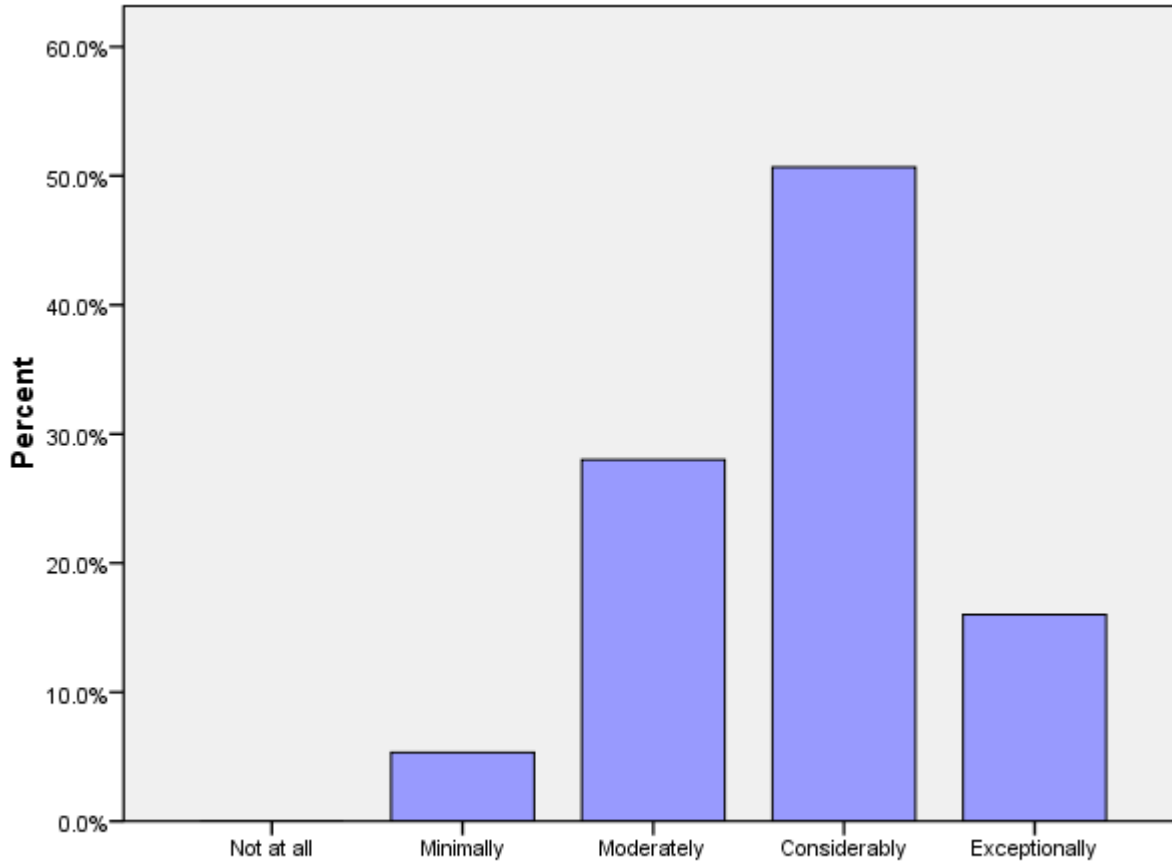
	Not at all	Minimally	Moderately	Considerably	Exceptionally	Total
J1D	7%	11%	28%	45%	9%	75



**J1d: How personally rewarding do you find your work with counterparts/community partners?**

**J1e: How personally rewarding do you find your experience with other HCNs?**

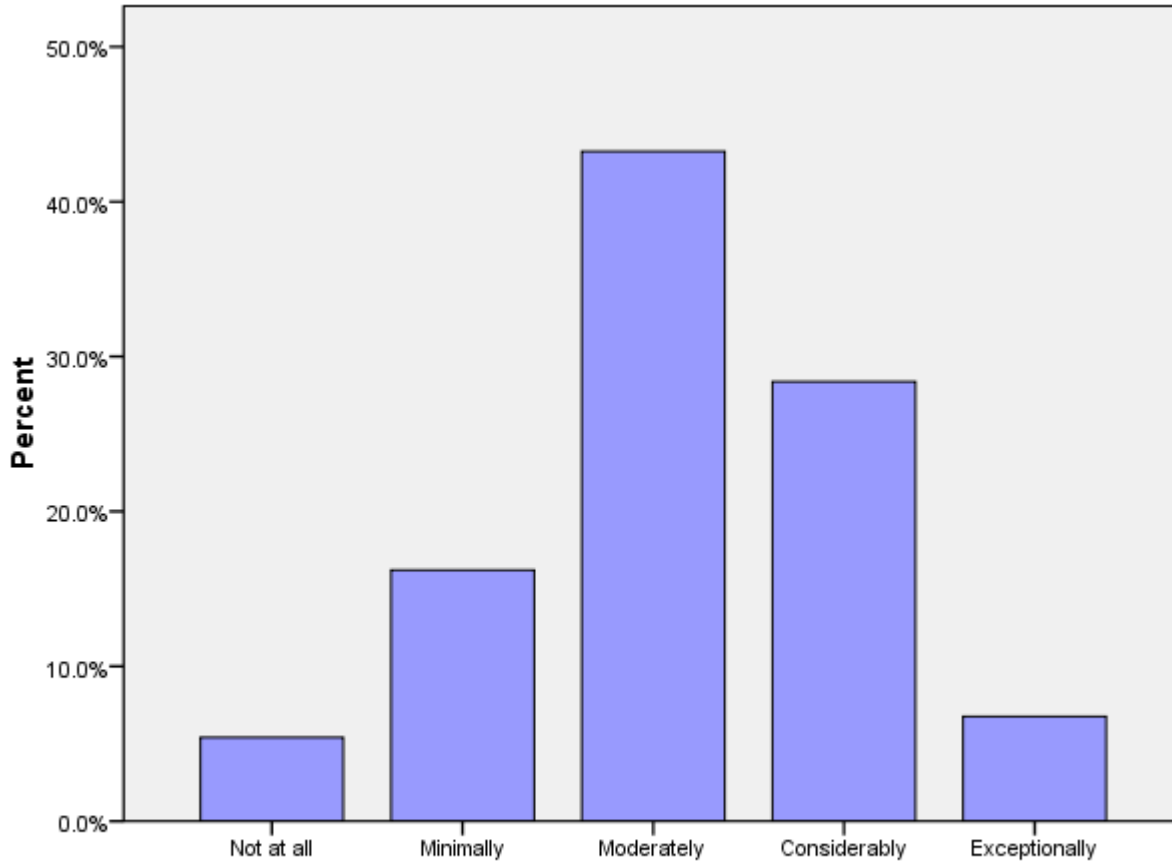
	Not at all	Minimally	Moderately	Considerably	Exceptionally	Total
J1E		5%	28%	51%	16%	75



**J1e: How personally rewarding do you find your experience with other HCNs?**

**J2a (PCVs at post 9 months+ months): Please rate how well you think you achieved Goal 1.**

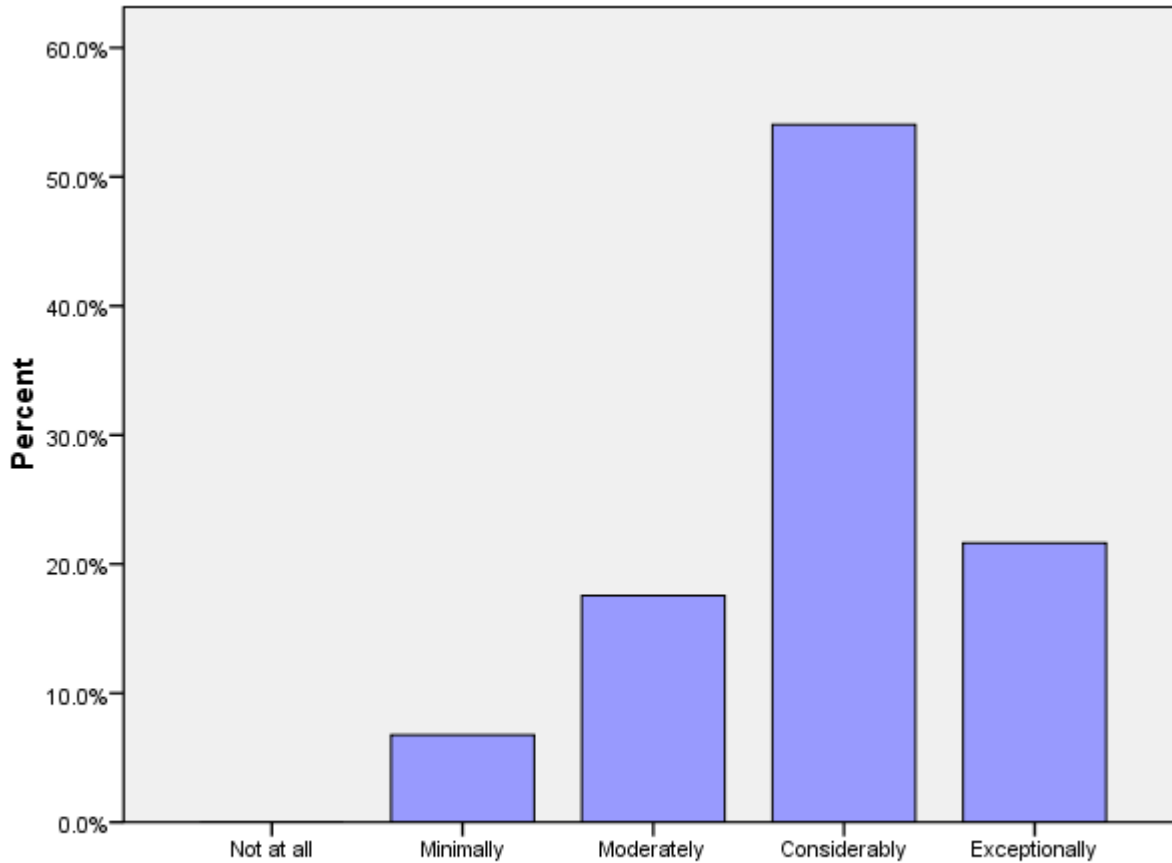
	Not at all	Minimally	Moderately	Considerably	Exceptionally	Total
J2A	5%	16%	43%	28%	7%	74



**J2a (PCVs at post 9 months+ months): Rate how well you think you achieved Goal 1.**

**J2b: (PCVs at post 9 months+ months): Please rate how well you think you achieved Goal 2.**

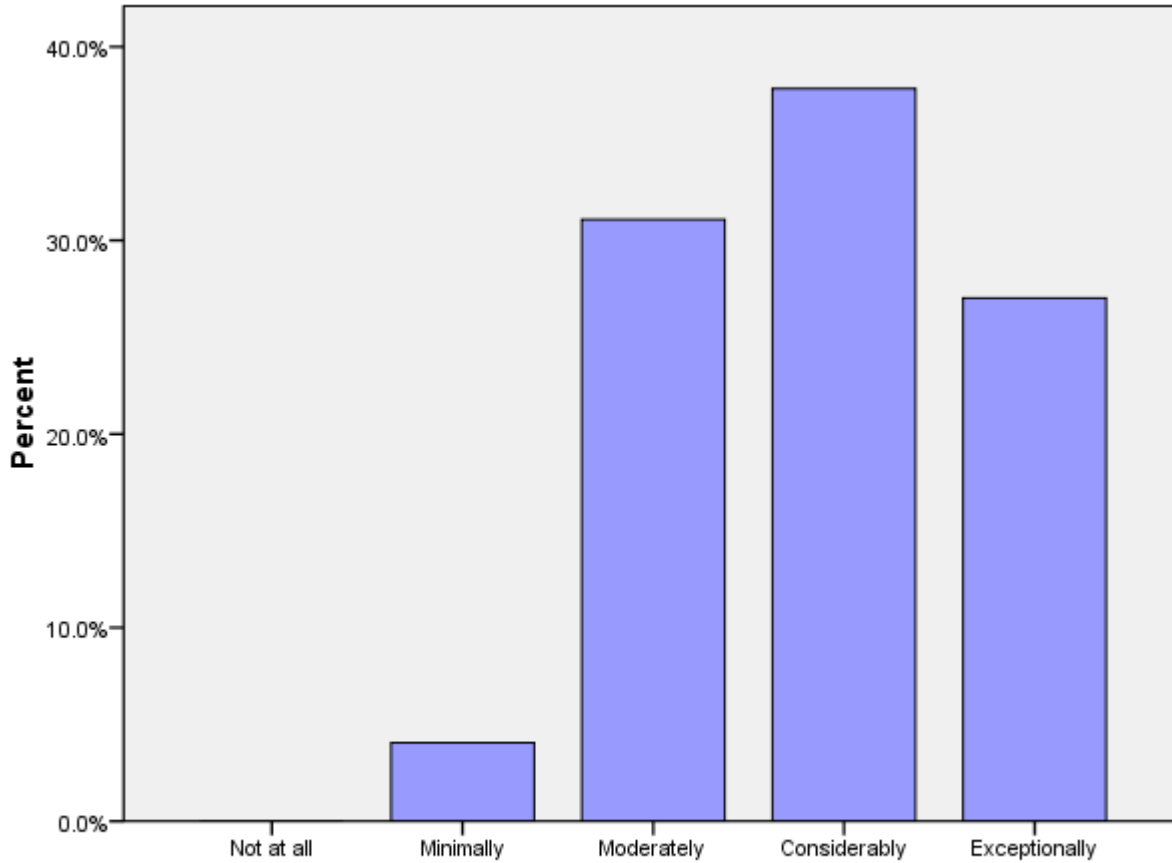
	Not at all	Minimally	Moderately	Considerably	Exceptionally	Total
J2B		7%	18%	54%	22%	74



**J2b (PCVs at post 9 months+ months): Rate how well you think you achieved Goal 2.**

**J2c (PCVs at post 9 months+ months): Please rate how well you think you achieved Goal 3.**

	Not at all	Minimally	Moderately	Considerably	Exceptionally	Total
J2C		4%	31%	38%	27%	74



**J2c (PCVs at post 9 months+ months): Please rate how well you think you achieved Goal 3.**

**J3: Today, would you make the same decision to join the Peace Corps?**

	No	Not likely	Possibly	Probably	Definitely	Total
J3	1%		5%	21%	72%	75

**J4: Would you recommend Peace Corps service to others you think are qualified?**

	No	Not likely	Possibly	Probably	Definitely	Total
J4	1%	1%	15%	20%	63%	75

**J5: Do you intend to complete your Peace Corps service?**

	No	Not sure	Yes	Might extend	Total
J5	1%		74%	24%	74

**J6: Would your host country benefit most if the Peace Corps program was---**

	Discontinued	Reduced	Refocused/redesigned	Maintained as is	Expanded	Total
J6	1%	3%	70%	19%	7%	74

## **K. Activities After Peace Corps Service**

*This section reports on Volunteers' plans for after they have completed their Peace Corps Service.*

### **K1a: What are your plans after your Peace Corps service? Work in government.**

Government			
In the U.S.	In your host country	In another country	N
70%	0%	30%	10

\* Percent of cases was used. Percentages will be greater than 100 since Volunteers were asked to select all that applied.

### **K1b: What are your plans after your Peace Corps service? Work in the private sector.**

Private Sector			
In the U.S.	In your host country	In another country	N
88%	0%	25%	8

\* Percent of cases was used. Percentages will be greater than 100 since Volunteers were asked to select all that applied.

### **K1c: What are your plans after your Peace Corps service? Work for an NGO.**

NGO			
In the U.S.	In your host country	In another country	N
86%	0%	14%	7

\* Percent of cases was used. Percentages will be greater than 100 since Volunteers were asked to select all that applied.



**K1d: What are your plans after your Peace Corps service? Work for PC Response.**

Peace Corps Response			
In the U.S.	In your host country	In another country	N
25%	0%	75%	4

\* Percent of cases was used. Percentages will be greater than 100 since Volunteers were asked to select all that applied.

**K1e: What are your plans after your Peace Corps service? Continue to participate in volunteer activities.**

Volunteer Activities			
In the U.S.	In your host country	In another country	N
90%	0%	30%	10

\* Percent of cases was used. Percentages will be greater than 100 since Volunteers were asked to select all that applied.

**K1f: What are your plans after your Peace Corps service? Graduate school/academic credentialing.**

Graduate School			
In the U.S.	In your host country	In another country	N
93%	0%	7%	15

\* Percent of cases was used. Percentages will be greater than 100 since Volunteers were asked to select all that applied.

**K1g: What are your plans after your Peace Corps service? Travel.**

Travel			
In the U.S.	In your host country	In another country	N
32%	0%	74%	19

\* Percent of cases was used. Percentages will be greater than 100 since Volunteers were asked to select all that applied.

**K1h: What are your plans after your Peace Corps service? Other.**

Other			
In the U.S.	In your host country	In another country	N
40%	0%	60%	5

\* Percent of cases was used. Percentages will be greater than 100 since Volunteers were asked to select all that applied.

**K2: How prepared do you feel to share your Peace Corps experience and knowledge of your host country with others in the United States when you return?**

	Not at all	Minimally	Moderately	Considerably	Total
How prepared do you feel to share your Peace Corps experience and knowledge of your host country with others in the United States when you return?	0%	0%	44%	56%	32

**K3: How well do you feel Peace Corps has prepared you for life in the U. S. after you return?**

	Not at all	Minimally	Moderately	Considerably	Exceptionally	Total
How well do you feel Peace Corps has prepared you for life in the U. S. after your return?	0%	16%	38%	41%	6%	32

**K6: Have your life/career goals changed because of your Peace Corps service?**

	No	Yes	Total
Have your life/career goals changed because of your Peace Corps service?	62%	38%	
			32

**K7: How well informed are you about the following opportunities for returned Volunteers:**

	Not informed	Somewhat informed	Well informed	N
Peace Corps Response	12%	66%	22%	32
Peace Corps' Fellows/USA program	0%	62%	38%	32
Noncompetitive eligibility	0%	34%	66%	32
RPCV Career Center in Washington, D.C.	38%	41%	22%	32
Returned Volunteer Services	34%	50%	16%	32

**K8: How did you first learn about the Fellows/USA program?**

Learn about Fellows/USA program	PC Website	50%	32
	Word of mouth	25%	
	From a recruiter	16%	
	At COS Conference	12%	
	University website	12%	
	At post's information resource center	9%	
	From staff in the host country's PC office	6%	
	Mid-service mailing from PC	3%	
	Other	3%	
	Hotline	0%	
	At PST	0%	
	At IST	0%	
N			

\* Percent of cases was used. Percentages will be greater than 100 since Volunteers were asked to select all that applied.

**K9: Which of the following resources do you think will be helpful as you exit Peace Corps service?**

K9 Resources	Applying to federal government with RPCV noncompetitive eligibility	70%	30
	Electronic newsletter with job postings and career advice	60%	
	List of RPCVs willing to talk to me about their careers	50%	
	RPCV career conferences	43%	
	Career Resource Manual	40%	
	RPCV job search webinars	40%	
	Access to free job bulletins	33%	
	Connection with RPCVs through a mentoring program	23%	
	RPCV Handbook	20%	
	NOT SURE	20%	
	Guide to speaking about my PC service to others (third goal)	17%	
	Self-assessment software (SIGI 3)	10%	
Other	3%		
N			

\* Percent of cases was used. Percentages will be greater than 100 since Volunteers were asked to select all that applied.

**K10: Which of the following third goal (helping promote a better understanding of peoples on the part of Americans) activities do you plan to do when you return to the U. S.?**

K10 Third Goal	Join a RPCV group	78%	32
	Continue with volunteerism and service learning	66%	
	Speak to school age children about my experience	56%	
	Speak to a group of adults about my experience	53%	
	Write stories from my PC service on my own	31%	
	Participate in PC Week	16%	
	NOT SURE	9%	
	Obtain and use PC third goal resources	3%	
	Write stories from my PC service in conjunction with CWWS	0%	
	Other	0%	
N			

\* Percent of cases was used. Percentages will be greater than 100 since Volunteers were asked to select all that applied.