



**Peace Corps Volunteer
2009 Annual Volunteer Survey**

**Cameroon
October 7, 2009**

Office of Strategic Information, Research and Planning

Table of Contents

Introduction to the 2009 Annual Volunteer Survey Report	3
Overview of the Post's 2009 Volunteer Survey Respondents.....	4
A. Applying to the Peace Corps.....	6
B. Preparation for the Peace Corps.....	8
C. Your Peace Corps Assignment	9
D. Training for Peace Corps Assignment	14
E. Volunteer Assignment Goals and Impact.....	17
F. Peace Corps Support.....	25
G. Your Safety and Security	31
H. Volunteers Working in HIV/AIDS	40
I. Your Life in the Peace Corps	41
J. Overall Assessment of Peace Corps Service	46
K. Activities After Peace Corps Service.....	55

Introduction to the 2009 Annual Volunteer Survey Report

This country report contains the tables and charts from the Volunteers in your country who completed the 2009 Annual Volunteer Survey (AVS). The results provide a picture of the activities, experiences and views of Peace Corps Volunteers in 2009. The results show areas where Volunteers' needs are met and identify areas where improvements may be needed. The survey was fielded from May through August 2009.

A core set of questions was asked of all Volunteers. For the first time, Volunteers were also asked a series of questions relevant to their time in country:

- Volunteers in country 8 or less months were asked about applying to and preparing for the Peace Corps.
- Volunteers in country 18 or less months were asked about the effectiveness of their pre-service training (PST).
- Volunteers in country 19 or more months were asked about their post-service plans, as well as the Peace Corps' resources for their post-service transition.

Tables and graphs are labeled by survey section and the survey question. The tables show the percent of post respondents that selected each choice and the total number of post respondents that answered the question. The number of responses for each question will vary, depending on:

- whether the question was asked of all Volunteers or only the Volunteers in-country a certain number of months and
- how many of the Volunteers who were "eligible" to answer the question did respond.

Most survey questions asked respondents to select only one from a set of choices. The percentages for the "select one" responses add up to 100 percent. Other questions asked Volunteers to "mark all that apply" in situations, for example, where it is likely that respondents are involved in more than one secondary activity. The percentages of the "mark all that apply" responses will total more than 100 percent; each percentage equals the number of respondents selecting that choice divided by the number of respondents who answered the question.

Posts are encouraged to compare these 2009 results with the 2006 and 2008 survey results to note trends and changes over time. Because questions are revised from one survey to the next, a crosswalk between the 2008 and 2009 questions is posted on the OSIRP intranet page under 2009 AVS Reports "Reference Documents." The earlier 2008 survey global, regional and post reports are also posted on the OSIRP Intranet page.

Volunteers' extensive narrative responses to the 29 open-ended questions on the survey are in the post's 2009 Annual Volunteer Survey Open Ended Responses report. All Volunteers' narrative responses to key questions will be analyzed for global themes and presented in a later report.

The number of surveys for each post includes surveys submitted online by Volunteers and completed paper surveys sent to the Peace Corps headquarters for hand-entry into the online survey system. The final count may include mostly completed partial surveys added to the final dataset after the survey closed.

Overview of the Post's 2009 Volunteer Survey Respondents

This overview presents basic information about the characteristics of Volunteers who completed the 2009 Annual Volunteer Survey at post.

Completed Surveys by Months in Country

	8 months or less		9 to 18 months		19 months or more		Total	
	Number	Percent	Number	Percent	Number	Percent	Number	Percent
Months3grp	7	6%	50	43%	58	50%	115	100%

L1: What is your age?

	20-29	30-49	50+	Total
AGE3grp	94%	3%	4%	112

L2: What is your gender?

	Female	Male	Total
GENDER	61%	39%	114

Completed surveys by project.

	Count	Column N %
Agroforestry and Permanent Farming Systems	33	29%
Community Health	24	21%
Secondary Education	29	25%
Small Enterprise Development project	24	21%
Other. Please specify	4	4%
Total	114	100%

C2: Which best describes the focus of your primary assignment/work?

		Percent	Number
C2	Business education/advising	19%	22
	Agroforestry	19%	22
	English teaching	11%	13
	Health extension	10%	11
	Community development	9%	10
	Math/science teaching	6%	7
	HIV/AIDS	5%	6
	Information & communications technology (ICT)	5%	6
	NGO development	5%	6
	Other: Please specify	2%	2
	Forestry/parks	2%	2
	Environmental education	2%	2
	Agriculture/fish/livestock	2%	2
	Youth development	1%	1
	Other education	1%	1
	Teacher training	1%	1
	Urban & regional planning/municipal development		
	Water sanitation		
	Total	100%	114

C2.TEXT: Which of the following initiatives does your primary work include? Other (specify)

		PERCENT	NUMBER
C2.TEXT	Open-ended results. Not responsive to request.		
Total		100%	115

A. Applying to the Peace Corps

This section reports Volunteers' motivations in applying and accepting a Peace Corps assignment.

A1: How important were the following factors in accepting a PC assignment?

	Not Important	Somewhat important	Important	NA	Total
Different culture			100%		7
Work experience		43%	57%		7
Help others		29%	71%		7
International experience		29%	71%		7
Language	14%	29%	57%		7
Personal growth		43%	57%		7
U. S. job market	43%	43%		14%	7
Serve my country	43%	43%		14%	7
Travel/adventure		29%	71%		7
Other: Please specify below			25%	75%	4

A1_OTHER: How important were the following factors in accepting a PC assignment? Other (specify)

	PERCENT	NUMBER
A1_OTHER	Open-ended results. Not responsive to request.	
Total	100%	115

A2. What prompted you to apply to the PC? Mark all that apply.

	PCV Responses	% Involved in Initiative	Total PCVs Responding
What prompted you to apply to PC			
Personal interest in the Peace Corps	6	86%	
Peace Corps website	2	29%	
Peace Corps recruiter	1	14%	
Peace Corps campus or community information session	1	14%	
Article or book about the Peace Corps	1	14%	
Other: Please specify	1	14%	
Returned Peace Corps Volunteer (e.g., someone you met or know personally)			
Returned Peace Corps Volunteer who spoke to your school or group about the Peace Corps			
Radio, TV, or print advertisement			
Peace Corps material in the mail			
Total			7

Percents may total to more than 100% since Volunteers were asked to "Mark all that apply."

A2.OTHER.TEXT: What prompted you to apply to the PC? Other (specify)

	PERCENT	NUMBER
A2.OTHER.TEXT		
Open-ended results. Not responsive to request.		
Total	100%	115

B. Preparation for the Peace Corps

This section reports on Volunteers' assessment of the materials and information available before their service.

B1: How useful was the information on the PC website in preparing you for the realities of living and working as a Volunteer?

	Not at all 1	2	3	4	Extremely 5	Don't know (did not access information)	Total
B1		29%	57%	14%			7

B2: How useful were the PC materials about your country in helping you prepare for your service?

	Not at all 1	2	3	4	Extremely 5	Don't know (did not access information)	Total
B2		14%	43%	43%			7

B3: How useful were the materials you received from the PC about your primary assignment in helping you prepare for your service?

	Not at all 1	2	3	4	Extremely 5	Don't know (did not access information)	Total
B3		43%	29%	29%			7

B4: How useful were the materials you received from the PC regarding the need for flexibility in adapting to your work?

	Not at all 1	2	3	4	Extremely 5	Don't know (did not access information)	Total
B4		14%	57%	29%			7

B7: How prepared do you feel to meet the challenges of PC service?

	Not at all 1	2	3	4	Exceptionally 5	Total
B7		14%	14%	71%		7

C. Your Peace Corps Assignment

This section reports Volunteers' primary assignment work and secondary activities. The term "primary assignment" refers to the Volunteers' assignment which is part of an overall project plan designed by your host country partners and in-country Peace Corps staff.

C3: Which of the following activities does your primary assignment/work include? Mark all that apply.

	PCV Responses	% Involved in Initiative	Total PCVs Responding
\$C3PrmAct	Working with youth	43	37%
	Income generation	39	34%
	HIV/AIDS	34	30%
	Nutrition education	32	28%
	Rural development	32	28%
	Environment work	31	27%
	Business advertising	28	24%
	Working with NGO(s)	27	23%
	Microenterprise development	26	23%
	Water and sanitation	23	20%
	English teaching	20	17%
	Natural resources management	20	17%
	Information and communications technology (ICT)	18	16%
	Girls' education	15	13%
	Working with special groups (e.g., disabled, elderly, ethnic minorities, orphans)	15	13%
	WID/GAD	14	12%
	Community food security (production/marketing)	13	11%
	Mobilize host country nationals (HCNs) to volunteer	12	10%
	Biodiversity conservation	10	9%
Household food security	10	9%	

Other: Please specify	10	9%	
World Wise Schools/ Correspondence Match	9	8%	
Child survival	6	5%	
Sports/fitness	6	5%	
Literacy	5	4%	
Arts	4	3%	
Library development	3	3%	
Urban development/municipal development	2	2%	
Total			115

Percents may total to more than 100% since Volunteers were asked to "Mark all that apply."

C3: Which of the following activities does your primary assignment/work include? Other (specify)

	Column N %	Count	Row N %
C3.OTHER.TEXT	Open-ended results. Not responsive to request.		
Total		115	100%

C4: Hours Spent on Primary Assignment During Average Work Week

	None	1-10 hrs	11-20 hrs	21-30 hrs	31-40 hrs	More than 40 hrs	Total
C4Hrs6grp		15%	47%	23%	10%	5%	115

C4: How many hours do you spend on your primary assignment during an average work week?

	All Volunteers	Average	Lowest reported	Highest reported	Did not answer
C4	115	21.8	3	55	0

C5: Which of the following do your secondary activities (other than your primary assignment work) include? Mark all that apply.

		PCV Responses	% Involved in Initiative	Total PCVs Responding
\$C5SecAct	Working with youth	54	51%	
	HIV/AIDS	36	34%	
	English teaching	27	25%	
	Girls' education	25	24%	
	Library development	22	21%	
	Information and communications technology (ICT)	20	19%	
	Sports/fitness	20	19%	
	Environment work	17	16%	
	Income generation	17	16%	
	World Wise Schools/ Correspondence Match	16	15%	
	Arts	15	14%	
	Nutrition education	15	14%	
	Water and sanitation	14	13%	
	WID/GAD	14	13%	
	Working with special groups (e.g., disabled, elderly, ethnic minorities, orphans)	14	13%	
	Rural development	13	12%	
	Working with NGO(s)	13	12%	
	Literacy	12	11%	

Mobilize host country nationals (HCNs) to volunteer	9	8%	
Biodiversity conservation	8	8%	
Other: Please specify	8	8%	
Business advertising	5	5%	
Microenterprise development	5	5%	
Urban development/municipal development	5	5%	
Child survival	4	4%	
Community food security (production/marketing)	4	4%	
Household food security	4	4%	
Natural resources management	2	2%	
Total			106

Percents may total to more than 100% since Volunteers were asked to "Mark all that apply."

C5: Which of the following do your secondary activities include? Other (specify)

	Column N %	Count	Row N %
C5.OTHER.TEXT			
Open-ended results. Not responsive to request.			
Total		115	100%

C5: No Secondary Activities

		Percent	Number
C5.NONE	No	93%	107
	Yes, I have no secondary activities	7%	8
	Total	100%	115

C6: Hours Spent on Secondary Activities During Average Work Week

	None	1-10 hrs	11-20 hrs	21-30 hrs	31-40 hrs	More than 40 hrs	Total
C6Hrs6grp		72%	26%	1%	2%		109

C6. How many hours do you spend on secondary activities during an average work week?

	All Volunteers	Average	Lowest reported	Highest reported	Did not answer
C6	115	9.7	1	35	6

C7: How personally satisfying is your--?

	Not at all 1	2	3	4	Exceptionally 5	Total
Primary assignment	3%	19%	33%	32%	12%	115
Secondary project/activities	1%	14%	31%	38%	17%	111

D. Training for Peace Corps Assignment

This section reports Volunteers' assessments of the effectiveness of their Pre-Service Training and In-Service Training at post. In-Service Training (IST) includes: Reconnect; Technical IST; Mid-Service and Close of Service conferences; project management/leadership conferences; and other post-sponsored training sessions

D1: (PCVs at post 18 months or less) How effective was your Pre-Service Training (PST) in preparing you to--

	Not effective	Poor	Adequate	Effective	Very Effective	NA/No training	Total
Manage cultural differences	4%	9%	32%	37%	19%		57
Deal with adjustment issues	4%	4%	42%	37%	14%		57
Work with counterparts/community partners	7%	36%	39%	14%	4%		56
Use language needed in work and social interactions	5%	18%	28%	30%	19%		57
Perform technical aspects of your work	5%	16%	39%	23%	16%	2%	57
Work on your project goals and objectives	4%	11%	46%	34%	5%		56
Conduct a participatory community needs assessment (e.g., PACA)	11%	26%	35%	21%	2%	5%	57
Monitor your project goals and outcomes	9%	16%	39%	32%	4%	2%	57
Maintain your physical health	4%	4%	23%	37%	33%		57
Maintain your mental/emotional health	4%	5%	19%	39%	32%	2%	57
Maintain your personal safety and security	4%	4%	21%	39%	33%		57

D5: How effective was your In-Service Training (IST) in preparing you to--

	Not effective	Poor	Adequate	Effective	Very Effective	NA/No training	Total
Manage cultural differences	4%	8%	47%	28%	6%	6%	96
Deal with adjustment issues	3%	8%	41%	39%	6%	3%	96
Build and strengthen working relationships with counterparts/community partners	4%	23%	29%	41%	3%		96
Use language needed in work and social interactions	10%	12%	25%	24%	8%	20%	96
Perform technical aspects of your work	9%	20%	31%	33%	5%	2%	95
Work on your project goals and objectives	7%	19%	29%	35%	8%	1%	95
Conduct a participatory community needs assessment (e.g.,PACA)	11%	20%	35%	15%	3%	16%	96
Monitor project goals and outcomes	8%	16%	45%	24%	4%	2%	95
Maintain your physical health	5%	4%	32%	35%	14%	9%	96
Maintain your mental/emotional health	4%	4%	35%	34%	18%	4%	96
Maintain your personal safety and security	4%	3%	32%	39%	12%	9%	96

D8: Did you have this skill before joining the Peace Corps?

	No/ No answer	Yes	Total
Skills specific to my assignment	55	60	115
Assessing community needs	86	29	115
Organizing/implementing community activities	61	53	114
Building capacity of local organizations	89	26	115
Monitoring, reporting, and evaluating my work	38	77	115
Designing and implementing training sessions	72	43	115

D8: Is the skill needed for your Peace Corps work?

	No/ No answer	Yes	Total
Skills specific to my assignment	7	107	114
Assessing community needs	14	99	113
Organizing/implementing community activities	12	101	113
Building capacity of local organizations	23	91	114
Monitoring, reporting, and evaluating my work	11	103	114
Designing and implementing training sessions	19	95	114

D8: Have you had adequate Peace Corps training to acquire the skill?

	No/ No answer	Yes	Total
Skills specific to my assignment	26	70	96
Assessing community needs	34	71	105
Organizing/implementing community activities	41	60	101
Building capacity of local organizations	58	45	103
Monitoring, reporting, and evaluating my work	24	71	95
Designing and implementing training sessions	31	69	100

E. Volunteer Assignment Goals and Impact

This section reports Volunteers' self-assessments of their impact on the individuals and organizations in the communities in which they serve. At the end of this section, Volunteers' third goal activities, participation in Coverdell World Wise School/Correspondence Match (CWWS/CM) and use of Peace Corps resources to support their work are reported in questions.

E1: To what extent does your Volunteer work assignment address the following?

	Not at all 1	2	3	4	Exceptionally 5	NA	Total
Meets the objectives of the project plan	4%	10%	38%	39%	7%	4%	114
Builds local capacity for sustainability	6%	14%	38%	36%	6%		114
Involves local people in planning and implementing activities	5%	9%	35%	35%	15%		113
Complements other local development activities	6%	15%	41%	24%	10%	4%	112
Transfers skills to host country individuals and organizations	3%	10%	36%	37%	15%		114
Mobilizes host country nationals (HCNs) to volunteer	13%	32%	28%	18%	5%	4%	114
Helps promote a better understanding of Americans on the part of the peoples served (goal 2)	2%	5%	26%	42%	24%	1%	113
Helps promote a better understanding of other peoples on the part of Americans (goal 3)	4%	6%	28%	39%	22%	2%	114

E2: To what extent does your host community--?

	Not at all 1	2	3	4	Exceptionally 5	NA	Total
Need the assistance that you provided	3%	10%	28%	43%	16%		58
Want the assistance that you provided		14%	12%	31%	41%	2%	58

E3: How much impact does your assignment have on the capacities of your host counterparts/community partners?

	None 1	2	3	4	Exceptional 5	NA	Total
Ability to access information (e.g., library, Internet, etc.)	15%	23%	30%	17%	10%	6%	115
Leadership skills	3%	21%	35%	37%	3%	1%	115
Planning and management	3%	15%	39%	34%	8%	1%	115
Problem solving/critical thinking	3%	21%	40%	30%	6%	1%	115
Self-esteem	5%	16%	40%	26%	9%	4%	115
Technical skills	6%	21%	35%	30%	7%	1%	115
Use of local resources	6%	15%	43%	27%	7%	2%	114
Use of external resources (e.g., grants, international NGOs)	8%	33%	26%	23%	5%	4%	115
Better understanding of Americans	2%	4%	21%	40%	32%	1%	115
Other: Please specify below	5%	5%	2%	5%		83%	41

E3: How much impact does your assignment have on the capacities of your host counterparts/community partners? Other (specify)

	Column N %	Count	Row N %
E3_OTHE Open-ended results. Not responsive to request.			
Total		115	100%

E4: How much impact does your assignment have on the capacities of your host individuals with whom you work?

	None 1	2	3	4	Exceptional 5	NA	Total
Ability to access information (e.g., library, Internet, etc.)	17%	19%	32%	20%	7%	4%	113
Leadership skills	6%	17%	37%	28%	10%	2%	113
Planning and management	4%	25%	32%	25%	12%	1%	112
Problem solving/critical thinking	1%	17%	38%	33%	11%	1%	113
Self-esteem	3%	15%	36%	29%	17%	1%	112
Technical skills	5%	13%	39%	34%	10%		111
Use of local resources	7%	19%	38%	25%	10%	1%	112
Use of external resources (e.g., grants, international NGOs)	16%	34%	20%	21%	4%	4%	112
Better understanding of Americans	1%	10%	17%	38%	34%	1%	113
Other: Please specify below	3%	5%	5%	5%	5%	76%	37

E4: How much impact does your assignment have on the capacities of your host individuals with whom you work? Other (specify)

	Column N %	Count	Row N %
E4_OTHER	Open-ended results. Not responsive to request.		
Total		115	100%

E5: To what extent does your assignment enhance the capacities of organizations with whom you work?

	None 1	2	3	4	Exceptional 5	NA	Total
Identifying and prioritizing organizational needs	7%	22%	29%	30%	6%	6%	111
Leadership	8%	18%	31%	32%	5%	6%	111
Management	7%	24%	27%	30%	6%	5%	113
Monitoring and evaluation	8%	22%	35%	27%	3%	6%	113
Planning and implementing organizational activities	8%	20%	29%	32%	5%	6%	112
Teamwork/participatory decision-making	8%	21%	29%	30%	6%	5%	112
Use of local resources	9%	19%	42%	21%	3%	6%	113
Ability to mobilize, manage, and sustain local volunteers	16%	29%	26%	20%	3%	7%	112
Other: Please specify below	10%	3%	8%	3%		77%	39

E5: To what extent does your assignment enhance the capacities of organizations with whom you work?

Other (specify)

	Column N %	Count	Row N %
E5_OTHER Open-ended results. Not responsive to request.			
Total		115	100%

E6: How effective have you been in transferring knowledge and skills to help the following persons or groups build their capacities?

	Not at all 1	2	3	4	Exceptionally 5	NA	Total
Your counterpart/community partner	11%	13%	37%	26%	10%	2%	115
Another institution/organization	9%	21%	37%	22%	3%	8%	115
Members of your host community	3%	17%	37%	33%	11%		115
Other: Please specify below	3%		3%	3%	9%	82%	34

E7: To what extent have HC individuals gained a better understanding of Americans? Includes "Too early to tell."

	Not at all	Minimally	Moderately	Considerably	Exceptionally	Too early to tell	Total
E7	0%	2%	24%	55%	18%	1%	114

E7: To what extent have HC individuals gained a better understanding of Americans? Excludes "Too early to tell."

	Not at all	Minimally	Moderately	Considerably	Exceptionally	Total
E7		2%	24%	56%	19%	113

E9. In which of the following third goal activities have you participated during your PC service?

		PCV Responses	% Doing This	Total PCVs Responding
\$E9Goal3Acts	Electronic updates	103	90%	
	Personal website or blog	62	54%	
	Hosting American visitors	57	50%	
	Hard copy/paper update	46	40%	
	Enrollment in the CWWS/CMS program	36	32%	
	Pen pal program/letter exchange	27	24%	
	While on home leave, spoke at a school or community group	16	14%	
	Other please specify	4	4%	
	Podcasted/created a slide show or video posted online	2	2%	
	Peace Corps Week activities	1	1%	
	Total			

Percents may total to more than 100% since Volunteers were asked to "Mark all that apply."

E9: When asked about third goal activities, Volunteer answered "No involvement in third goal activities."

	Have done third goal activities	No third goal activities	Total
Peace Corps' third goal is to "help promote a better understanding of other peoples on the part of Americans." In which of the following third goal activities, including your contact with family and friends, have you participated during your Peace Corps	99%	1%	115

E10: Would you recommend participation in the CWWS CMS to other Volunteers?

	I have not participated in CWWS/CM.	I have participated in CWWS/CM & would recommend it	I have participated in CWWS/CM and would NOT recommend it	Total
E10	65%	28%	7%	112

E11: To what extent have Americans gained a better understanding of HCNs? Includes "Too early to tell."

	Not at all	Minimally	Moderately	Considerably	Exceptionally	Too early to tell	Total
E11	1%	6%	26%	46%	18%	3%	114

E11: To what extent have Americans gained a better understanding of HCNs? Excludes "Too early to tell."

	Not at all	Minimally	Moderately	Considerably	Exceptionally	Total
E11	1%	6%	27%	47%	19%	111

E12: Which of the following resources have been useful to you in your third goal activities?

	Yes
Coverdell World Wise Schools staff (Useful)	19
Contact with other Peace Corps staff in Washington, D.C. (Useful)	8
Information at staging (Useful)	45
Information from your post sent to you before departure (Useful)	40
Internet (Useful)	88
Invitation kits (Useful)	48
Material in staging packet (Useful)	50
Peace Corps staff at post (e.g., World Wise School contact) (Useful)	19
Recruiting (Useful)	29
Resources available from Coverdell World Wise Schools (Useful)	10
Resources available on Peace Corps website (e.g., third goal section) (Useful)	35
Training on third goal (Useful)	32
Other: Please specify below (Useful)	3

E12: Which of the following resources would/will be helpful to you in your third goal activities?

	Yes
Coverdell World Wise Schools staff (Would be helpful)	48
Contact with other Peace Corps staff in Washington, D.C. (Would be helpful)	29
Information at staging (Would be helpful)	18
Information from your post sent to you before departure (Would be helpful)	37
Internet (Would be helpful)	17
Invitation kits (Would be helpful)	11
Material in staging packet (Would be helpful)	12
Peace Corps staff at post (e.g., World Wise School contact) (Would be helpful)	20
Recruiting (Would be helpful)	11
Resources available from Coverdell World Wise Schools(Would be helpful)	25
Resources available on Peace Corps website (e.g., third goal section) (Would be helpful)	20
Training on third goal (Would be helpful)	28

E12: Other useful/helpful resources? Other (specify)

	Column N %	Count	Row N %
E12_OTHE Open-ended results. Not responsive to request.			
Total		115	100%

E13: Do you know about the Peace Corps Partnership Program (PCPP)?

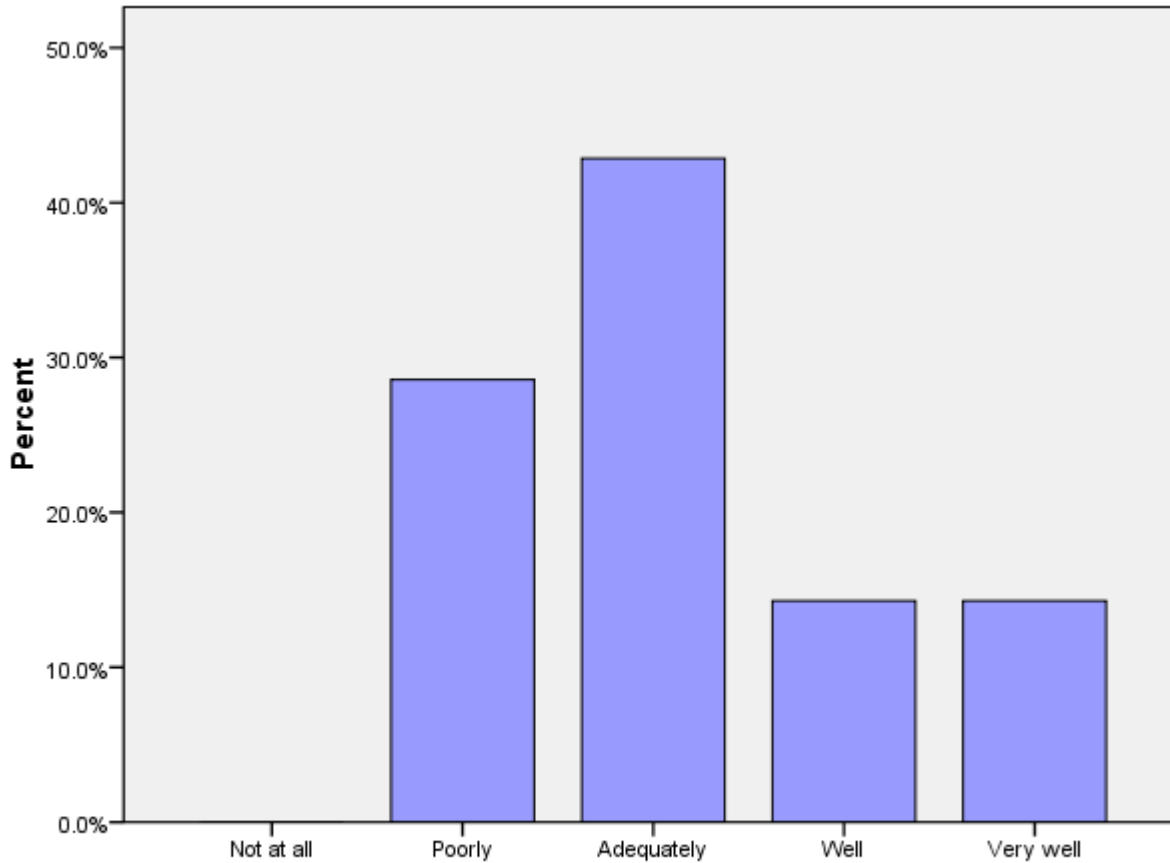
	No	Yes, but I haven't used it.	Yes, I have used it.	Total
E13	9%	59%	32%	115

F. Peace Corps Support

This section reports Volunteers' assessments of in-country Peace Corps.

F1 (PCVs at post 9+ months): How prepared for your arrival were the host people with whom you work?

	Not at all	Poorly	Adequately	Well	Very well	Total
F1		29%	43%	14%	14%	7



F1: When you arrived at your community, how prepared for your arrival were the host people with whom you work?

F2: How satisfied are you with the health care you received from your PCMO(s)?

	Not at all	Minimally	Adequately	Considerably	Exceptionally	Not Used	Total
F2		4%	25%	37%	35%		114

F3: How satisfied are you with the following support provided by in-country PC staff?

	Not at all 1	2	3	4	Completely 5	NA	Total
Administrative/logistical	6%	26%	42%	17%	9%		115
Cross-cultural	3%	18%	47%	20%	11%	1%	115
Emotional	3%	19%	40%	23%	12%	3%	115
Feedback on my work reports	15%	26%	30%	15%	12%	3%	115
Job assignment	5%	21%	37%	25%	12%		115
Language learning	3%	17%	28%	33%	19%	1%	115
Medical		5%	23%	43%	30%		115
Safety and security	4%	10%	33%	34%	19%		114
Site selection/preparation	5%	26%	27%	30%	11%		115
Technical skills	6%	17%	45%	28%	4%		115

F4: How satisfied are you with the Peace Corps allocation of time and resources to mental health/adjustment issues?

	Not at all satisfied 1	2	3	4	Completely satisfied 5	Total
F4	3%	11%	43%	31%	11%	115

F5: What level of PC support have you received to help cope with stress from issues such as HIV/AIDS, food insecurity, etc. in your community? (Including PCVs w/no need for support)

	No support	Minimal support	Adequate support	Considerable support	Exceptional support	NA / I have no need for support	Total
F5	1%	12%	23%	10%	5%	49%	115

F5: What level of PC support have you received to help cope with stress from issues such as HIV/AIDS, food insecurity, etc. in your community? (Excluding PCVs w/no need for support)

	No support	Minimal support	Adequate support	Considerable support	Exceptional support	Total
F5	2%	24%	46%	19%	10%	59

F6: How would you rate your interaction with the Country Director in terms of the following?

	Not adequate	Adequate	Total
Responsiveness to my issues	23%	77%	111
Informative content	37%	63%	112
My comfort level discussing issues	45%	55%	110
Adequacy of visits	50%	50%	111

F6b: How would you rate your interaction with the PTO/SRPTC in terms of the following?

	Not adequate	Adequate	Total
Responsiveness to my issues	15%	85%	108
Informative content	15%	85%	107
My comfort level discussing issues	24%	76%	107
Adequacy of visits	25%	75%	105

F6c: How would you rate your interaction with the APCD/Program Manager in terms of the following?

	Not adequate	Adequate	Total
Responsiveness to my issues	18%	82%	115
Informative content	19%	81%	113
My comfort level discussing issues	17%	83%	112
Adequacy of visits	15%	85%	113

F6d: How would you rate your interaction with the PCMO in terms of the following?

	Not adequate	Adequate	Total
Responsiveness to my issues	4%	96%	114
Informative content	4%	96%	112
My comfort level discussing issues	8%	92%	111
Adequacy of visits	7%	93%	113

F6e: How would you rate your interaction with the Safety and Security Coordinator in terms of the following?

	Not adequate	Adequate	Total
Responsiveness to my issues	12%	88%	113
Informative content	16%	84%	110
My comfort level discussing issues	12%	88%	113
Adequacy of visits	20%	80%	112

F6f: How would you rate your interaction with the Training Manager in terms of the following?

	Not adequate	Adequate	Total
Responsiveness to my issues	26%	74%	111
Informative content	18%	82%	108
My comfort level discussing issues	32%	68%	109
Adequacy of visits	21%	79%	106

F6g: How would you rate your interaction with administrative staff in terms of the following?

	Not adequate	Adequate	Total
Responsiveness to my issues	30%	70%	111
Informative content	28%	72%	108
My comfort level discussing issues	23%	77%	108
Adequacy of visits	22%	78%	107

F6h: How would you rate your interaction with other post staff (please specify) in terms of the following?

	Not adequate	Adequate	Total
Responsiveness to my issues	56%	44%	18
Informative content	46%	54%	13
My comfort level discussing issues	47%	53%	15
Adequacy of visits	24%	76%	17

F7: To what extent is your CD aware of Volunteer issues and concerns through interactions with Volunteers?

	Not at all	Minimally	Adequately	Considerably	Completely	Total
F7	11%	44%	30%	14%	1%	115

F8: What is the most effective way you use to communicate with PC staff?

Most effective	Text messaging	42%	48
	Cellphone (voice)	23%	26
	Email/ Internet	21%	24
	In-person visits	8%	9
	Telephone at residence or work	3%	3
	Other. Please specify	2%	2
	Telephone not at residence or work	2%	2
	Letters	1%	1
	CB radio		
	Total	100%	115

F8: What is the second most effective way you use to communicate with PC staff?

Second most effective	Cellphone (voice)	38%	44
	Text messaging	28%	32
	Email/ Internet	23%	26
	In-person visits	6%	7
	Telephone at residence or work	3%	3
	Other. Please specify	2%	2
	Letters	1%	1
	Telephone not at residence or work		
	CB radio		
	Total	100%	115

F8: What is the third most effective way you use to communicate with PC staff?

(C11_THREE) Third most effective	Email/ Internet	50%	56
	In-person visits	19%	21
	Cellphone (voice)	17%	19
	Text messaging	12%	13
	Other. Please specify	1%	1
	Telephone at residence or work	1%	1
	CB radio	1%	1
	Telephone not at residence or work		
	Letters		
	Total	100%	112

F9: How do you rate the effectiveness of your communication resources for contacting in-country PC staff?

	Very poor	Poor	Adequate	Good	Excellent	Total
F9	3%	8%	37%	33%	19%	115

G. Your Safety and Security

This section reports on how safe and informed about their safety Volunteers feel. Their experiences with reported and unreported crimes are summarized.

G1: How safe do you feel...?

	Not at All Safe	Often Safe	Adequately Safe	Usually Safe	Very Safe	Total
Where you live		6%	8%	34%	52%	115
Where you work		3%	8%	30%	59%	115
When you travel in-country	4%	16%	36%	36%	9%	115
City where main Peace Corps office is located	1%	13%	40%	37%	10%	115

G2: Please indicate the number of times you experienced the following types of discrimination/harassment.

	Never	Once	2-5 times	6-10 times	11-25 times	26+ times	Total
Age	78.7%	2.2%	12.4%	3.4%	1.1%	2.2%	89
Anti-American	57.8%	8.9%	22.2%	3.3%	5.6%	2.2%	90
Disability	100.0%						90
Gender	58.1%	2.2%	9.7%	5.4%	7.5%	17.2%	93
Racial/color	48.4%	4.4%	7.7%	5.5%	4.4%	29.7%	91
Religious	87.8%	2.2%	6.7%	2.2%	1.1%		90
Sexual (verbal)	55.2%	4.6%	10.3%	5.7%	4.6%	19.5%	87
Sexual (physical)	87.9%	4.4%	5.5%		1.1%	1.1%	91
Sexual orientation	98.9%				1.1%		88

G2: Please indicate the number of times you reported discrimination/harassment events to PC.

	Never	Once	2-5 times	6-10 times	11-25 times	26+ times	Total
Age	94.4%	5.6%					18
Anti-American	100.0%						34
Gender	91.2%	2.9%	5.9%				34
Racial/color	100.0%						45
Religious	100.0%						10
Sexual (verbal)	90.0%	5.0%	2.5%			2.5%	40
Sexual (physical)	80.0%	10.0%	10.0%				10
Sexual orientation	100.0%						1

G3: Please indicate the number of times you experienced the following types of crimes.

	Never	Once	2-5 times	6-10 times	11-25 times	26+ times	Total
Burglary	84.7%	8.2%	7.1%				98
Theft	63.4%	31.7%	5.0%				101
Robbery	92.2%	7.8%					90
Physical assault	89.9%	6.7%	1.1%	1.1%	1.1%		89
Aggravated assault	100.0%						88
Sexual assault	95.6%	2.2%	2.2%				91
Rape	100.0%						87

G3: Please indicate the number of times you reported the following crimes to Peace Corps.

	Never	Once	2-5 times	6-10 times	11-25 times	26+ times	Total
Burglary	21.4%	57.1%	21.4%				14
Theft	52.8%	44.4%	2.8%				36
Robbery	28.6%	71.4%					7
Physical assault	50.0%	37.5%	12.5%				8
Sexual assault	66.7%		33.3%				3

G4a: If you did not report your experience with burglary, please your reason(s) for not reporting.

		PCV Responses	% Reason Not Rptd	Total PCVs Responding
\$NoRpBurg	I felt it was too minor or common to report	8	89%	
	I did not think the PC could help	5	56%	
	Concerns of a possible breach in confidentiality	1	11%	
	I believed it could result in changing sites			
	Reporting might result in disciplinary action against me			
	It might hurt my relationship with the community			
	Other			
	Total			

9

*Percents may total to more than 100% since Volunteers were asked to "mark all that apply."

G4b: If you did not report your experience with theft, please your reason(s) for not reporting.

		PCV Responses	% Reason Not Rptd	Total PCVs Responding
\$NoRpTheft	I felt it was too minor or common to report	16	70%	
	I did not think the PC could help	13	57%	
	Other	3	13%	
	It might hurt my relationship with the community	2	9%	
	I believed it could result in changing sites	1	4%	
	Concerns of a possible breach in confidentiality			
	Reporting might result in disciplinary action against me			
	Total			

*Percents may total to more than 100% since Volunteers were asked to "mark all that apply."

G4c: If you did not report your experience with robbery, please your reason(s) for not reporting.

		PCV Responses	% Reason Not Rptd	Total PCVs Responding
\$NoRpRobb	I felt it was too minor or common to report	1	50%	
	Reporting might result in disciplinary action against me	1	50%	
	Other	1	50%	
	I did not think the PC could help			
	I believed it could result in changing sites			
	Concerns of a possible breach in confidentiality			
	It might hurt my relationship with the community			
	Total			

*Percents may total to more than 100% since Volunteers were asked to "mark all that apply."

G4d: If you did not report your experience with physical assault, please your reason(s) for not reporting.

		PCV Responses	% Reason Not Rptd	Total PCVs Responding
\$NoRpPhAs	I felt it was too minor or common to report	5	83%	
	I did not think the PC could help	4	67%	
	I believed it could result in changing sites	1	17%	
	It might hurt my relationship with the community	1	17%	
	Concerns of a possible breach in confidentiality			
	Reporting might result in disciplinary action against me			
	Other			
	Total			

6

*Percents may total to more than 100% since Volunteers were asked to "mark all that apply."

G4: If you did not report your experience with aggravated assault, please your reason(s) for not reporting.

	PCV Responses	% Reason Not Rptd	Total PCVs Responding
\$NoRpAgAs			
I did not think the PC could help			
I believed it could result in changing sites			
I felt it was too minor or common to report			
Concerns of a possible breach in confidentiality			
Reporting might result in disciplinary action against me			
It might hurt my relationship with the community			
Other			
Total			

*Percents may total to more than 100% since Volunteers were asked to "mark all that apply."

G4e: If you did not report your experience with sexual assault, please your reason(s) for not reporting.

		PCV Responses	% Reason Not Rptd	Total PCVs Responding
\$NoRpSxAs	I did not think the PC could help	3	75%	
	I felt it was too minor or common to report	3	75%	
	It might hurt my relationship with the community	1	25%	
	Other	1	25%	
	I believed it could result in changing sites			
	Concerns of a possible breach in confidentiality			
	Reporting might result in disciplinary action against me			
	Total			

*Percents may total to more than 100% since Volunteers were asked to "mark all that apply."

G4f: If you did not report your experience with rape, please your reason(s) for not reporting.

		PCV Responses	% Reason Not Rptd	Total PCVs Responding
\$NoRpRape	I did not think the PC could help			
	I believed it could result in changing sites			
	I felt it was too minor or common to report			
	Concerns of a possible breach in confidentiality			
	Reporting might result in disciplinary action against me			
	It might hurt my relationship with the community			
	Other			
	Total			

*Percents may total to more than 100% since Volunteers were asked to "mark all that apply."

H. Volunteers Working in HIV/AIDS

This section reports Volunteers' involvement in HIV/AIDS and their perceived effectiveness of their HIV/AIDS related activities.

H1: Which of the following best describes your involvement in HIV/AIDS activities?

	HIV/AIDS work is my primary assignment.	HIV/AIDS work is part of my secondary activities.	Involved in HIV/AIDS efforts, not primary/secondary work	Not involved in any HIV/AIDS related activities	Total
H1	15%	37%	32%	17%	115

H2: How well has PC training prepared you to undertake your HIV/AIDS activities?

	Not at all	Poorly	Adequately	Well	Very well	NA	Total
H2	3%	25%	31%	26%	14%	1%	96

H3: In working with HC individuals or groups, how would you rate the effectiveness of your specific HIV/AIDS activities? (Including the "Don't Know" responses)

	Seldom effective	Sometimes effective	Often effective	Almost always effective	Don't know	Total
H3	7%	34%	38%	9%	11%	96

H3: In working with HC individuals or groups, how would you rate the effectiveness of your specific HIV/AIDS activities? (Excluding the "Don't Know" responses)

	Seldom effective	Sometimes effective	Often effective	Almost always effective	Total
H3	8%	39%	42%	11%	85

I. Your Life in the Peace Corps

This section reports on Volunteers' descriptions of and adjustments to their living conditions, including stress factors and how Volunteers cope with stress

I1: Have you lived with a host country individual or family?

	Never lived with a host country individual or family	Yes, I lived with a host country individual or family only	Yes, in my community (not during PST).	Yes, both during PST and later in my community.	Total
I1	2%	81%		17%	115

I2: How often do you interact with HCNs in community/family social events?

	Daily	Several times a week	Weekly	Several times a month	Monthly	Less than once a month	Total
I2	40%	20%	17%	11%	10%	2%	115

I3: How well can you communicate in the language used by most people in your community?

	Not at all	Poorly	Adequately	Well	Very well	Total
I3	4%	11%	29%	31%	24%	115

I4: Do you have the following at your worksite?

	Never	Sometimes or more often	Total
Electricity	27%	73%	112
Running water	60%	40%	112

14: Do you have the following at your residence?

	Never	Sometimes or more often	Total
Electricity	13%	87%	112
Running water	41%	59%	112

15: How well do your PC experiences match the expectations you had before you became a Volunteer?

	Not at all	Minimally	Moderately	Considerably	Exceptionally	Total
I5	6%	14%	42%	34%	4%	114

17: To what extent do the following create stress and/or emotional health issues for you?

	Not at all stressful 1	2	3	4	Exceptionally stressful 5	NA	Total
Cultural issues	13%	22%	43%	18%	4%		115
Dealing with violence in country (e.g., civil unrest, domestic violence, corporal punishment)	26%	39%	23%	5%	3%	4%	115
Health/medical problems	11%	43%	27%	17%	3%		115
Issues including family, friends, loved ones in U.S.	13%	34%	32%	17%	4%		113
Isolation/loneliness	13%	27%	39%	16%	5%		115
Local language	20%	29%	33%	15%	3%		115
Primary assignment	13%	23%	26%	27%	10%		115
Romantic relationships in-country	32%	28%	12%	8%	3%	17%	114
Interactions with other Volunteers	37%	33%	21%	6%	2%	1%	114
Interactions with PC Staff	27%	41%	18%	7%	6%	1%	114
Safety and security	26%	43%	24%	7%			114
Other: Please specify below	9%	3%	12%	15%	9%	53%	34

I8: Please mark all of the typical ways in which you cope with stress.

		PCV Responses	% Using This Stress Reducer	Total PCVs Responding
\$I8LessStress	Pursue personal hobbies	95	83%	
	Talk with friends and family in US	94	82%	
	Talk with PCVs outside my community	87	76%	
	Leave the community for a time	79	69%	
	Do sports	77	68%	
	Talk with PCVs in my community	69	61%	
	Talk with co-workers or friends (not PCVs)	63	55%	
	Get involved in other projects	57	50%	
	Meditate	27	24%	
	Pray	21	18%	
	Talk with PC in-country staff	16	14%	
	Do other activity (specify)	12	11%	
	Talk with my host family	6	5%	
	Talk with Office of Special Services staff			
Total			114	

*Percents total to more than 100% since Volunteers were asked to "mark all that apply."

18: Others I talk with to reduce stress

	Percent	Number
18.OTHR.S.TEXT	Open-ended results. Not responsive to request.	
Total		
		115

I8: Other activities to reduce stress

	Percent	Number
I8.OTHRACT.TEXT2	Open-ended results. Not responsive to request.	
Total	100%	115

I8: When asked about ways of coping with stress, Volunteers who answered "No stress"

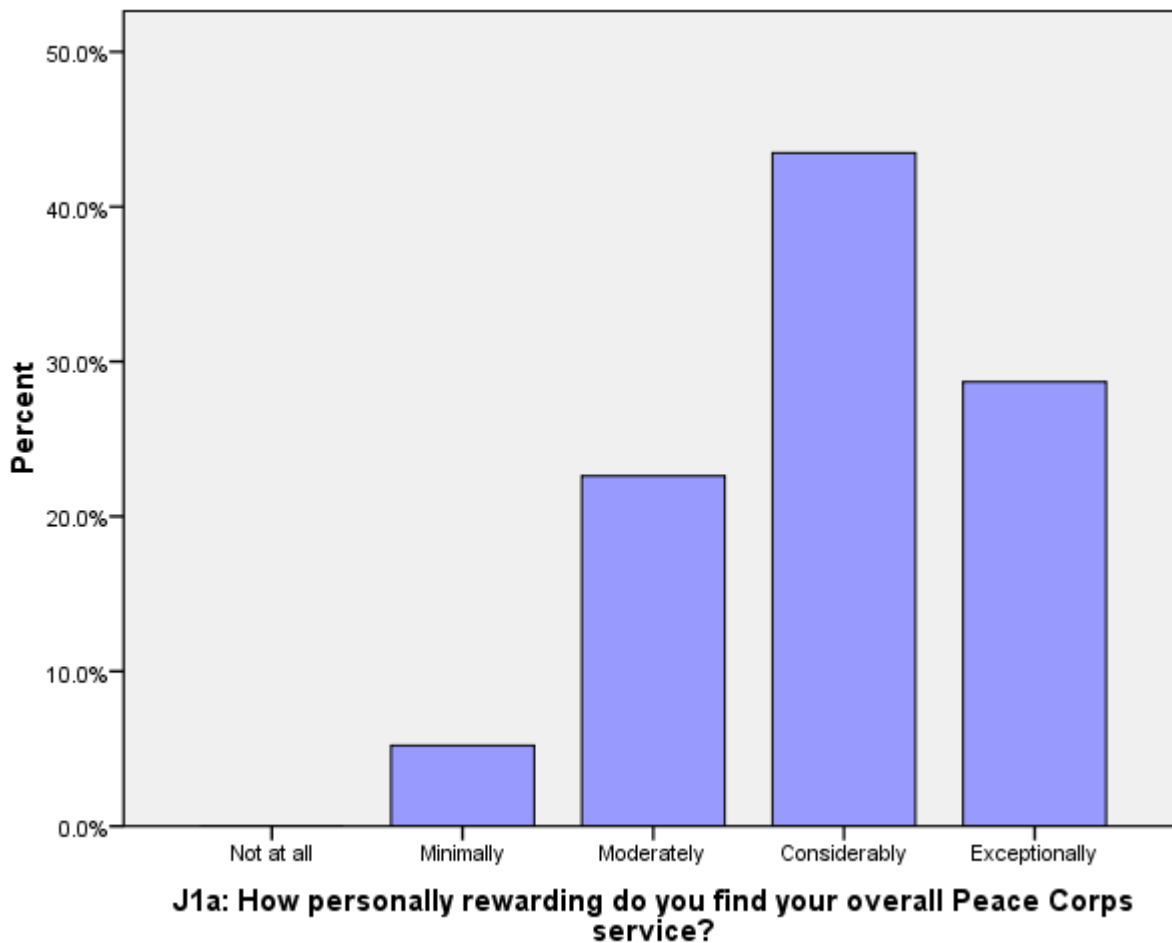
	No	Yes, I have no stress	Total
I8.NOSTRESS	99%	1%	115

J. Overall Assessment of Peace Corps Service

This section reports Volunteers' level of satisfaction with their Peace Corps service and their expectations about completing their service.

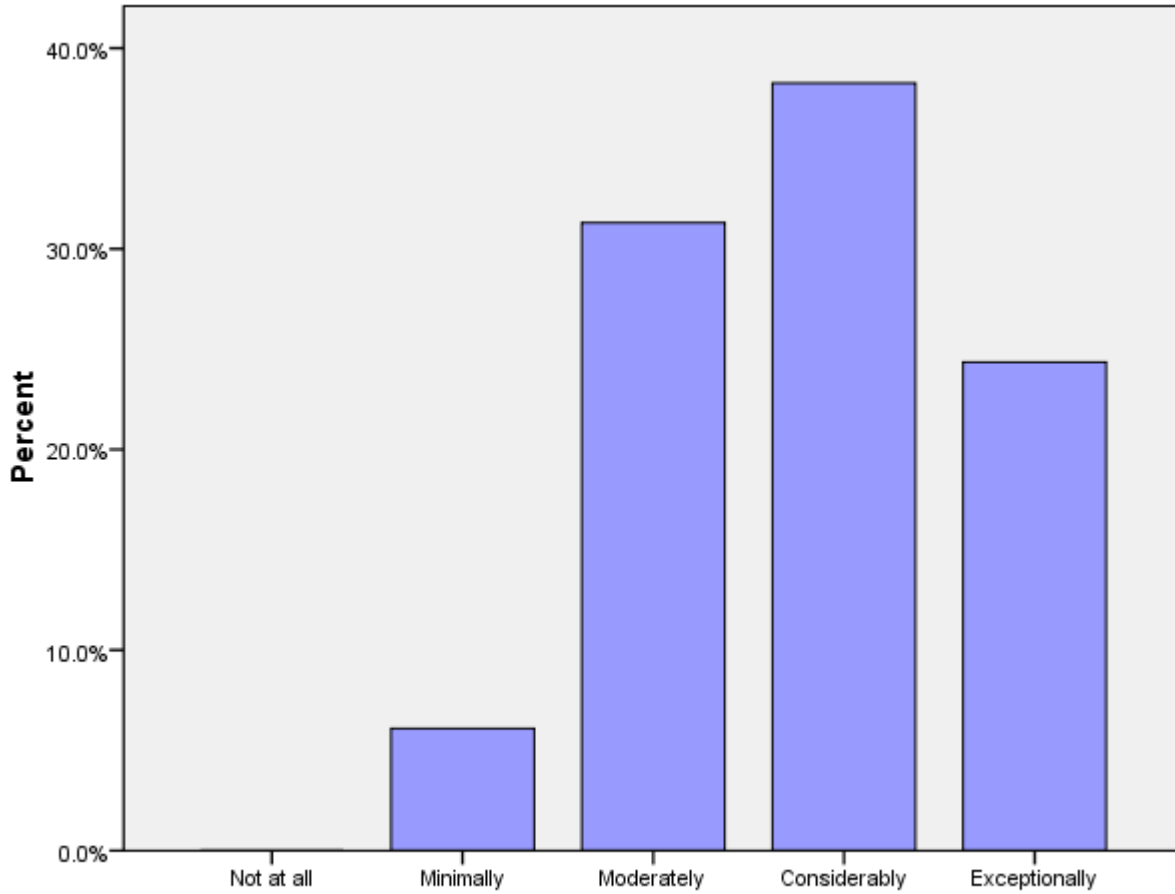
J1a: How personally rewarding do you find your overall Peace Corps service?

	Not at all	Minimally	Moderately	Considerably	Exceptionally	Total
J1A		5%	23%	43%	29%	115



J1b: How personally rewarding do you find your community involvement?

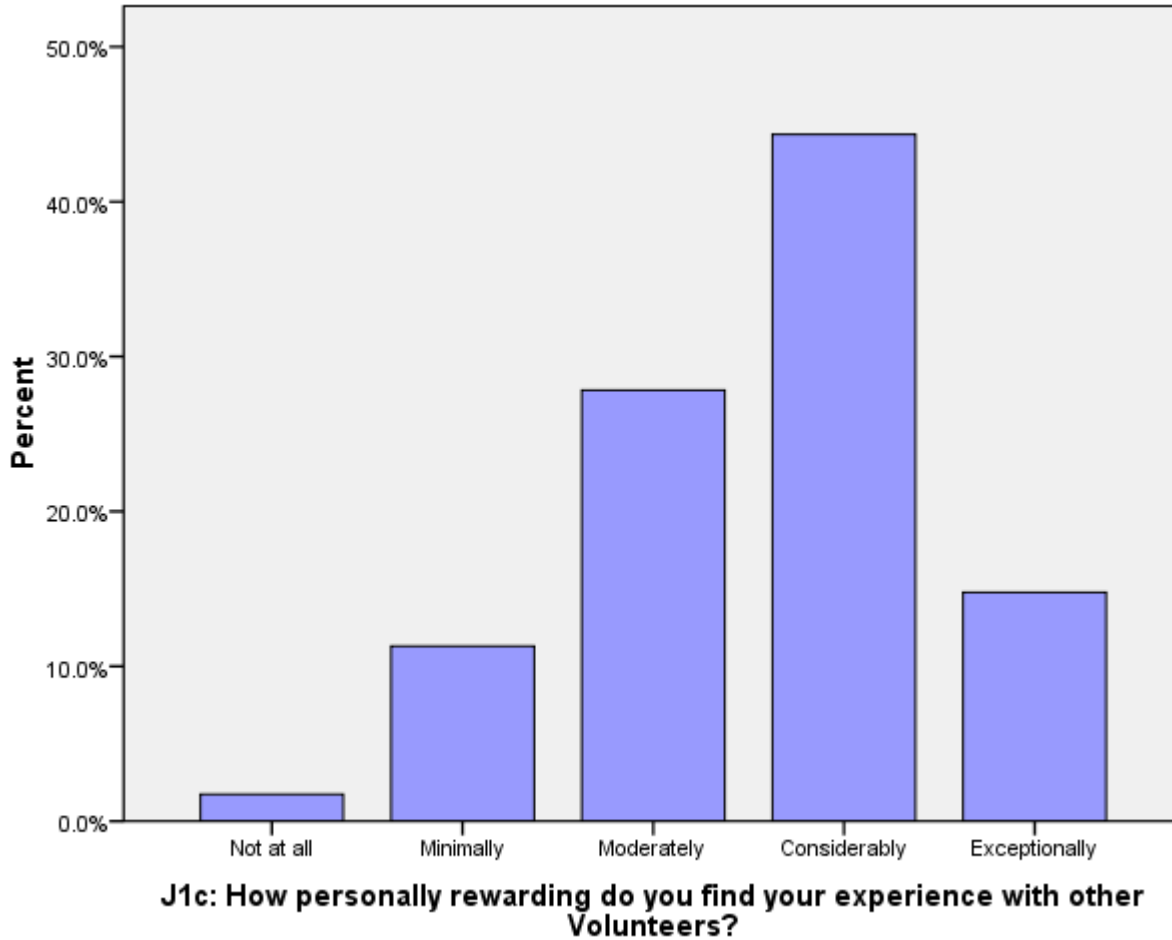
	Not at all	Minimally	Moderately	Considerably	Exceptionally	Total
J1B		6%	31%	38%	24%	115



J1b: How personally rewarding do you find your community involvement?

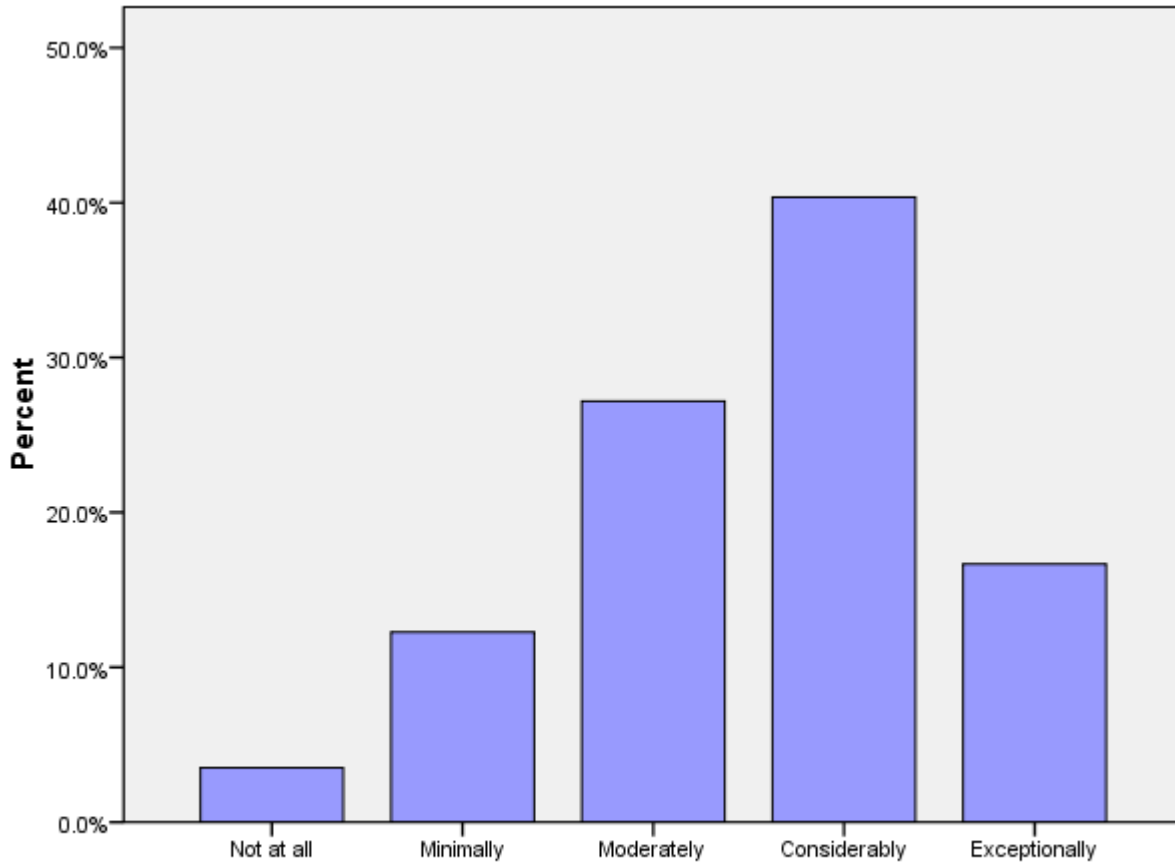
J1c: How personally rewarding do you find your experience with other Volunteers?

	Not at all	Minimally	Moderately	Considerably	Exceptionally	Total
J1C	2%	11%	28%	44%	15%	115



J1d: How personally rewarding do you find your work with counterparts/community partners?

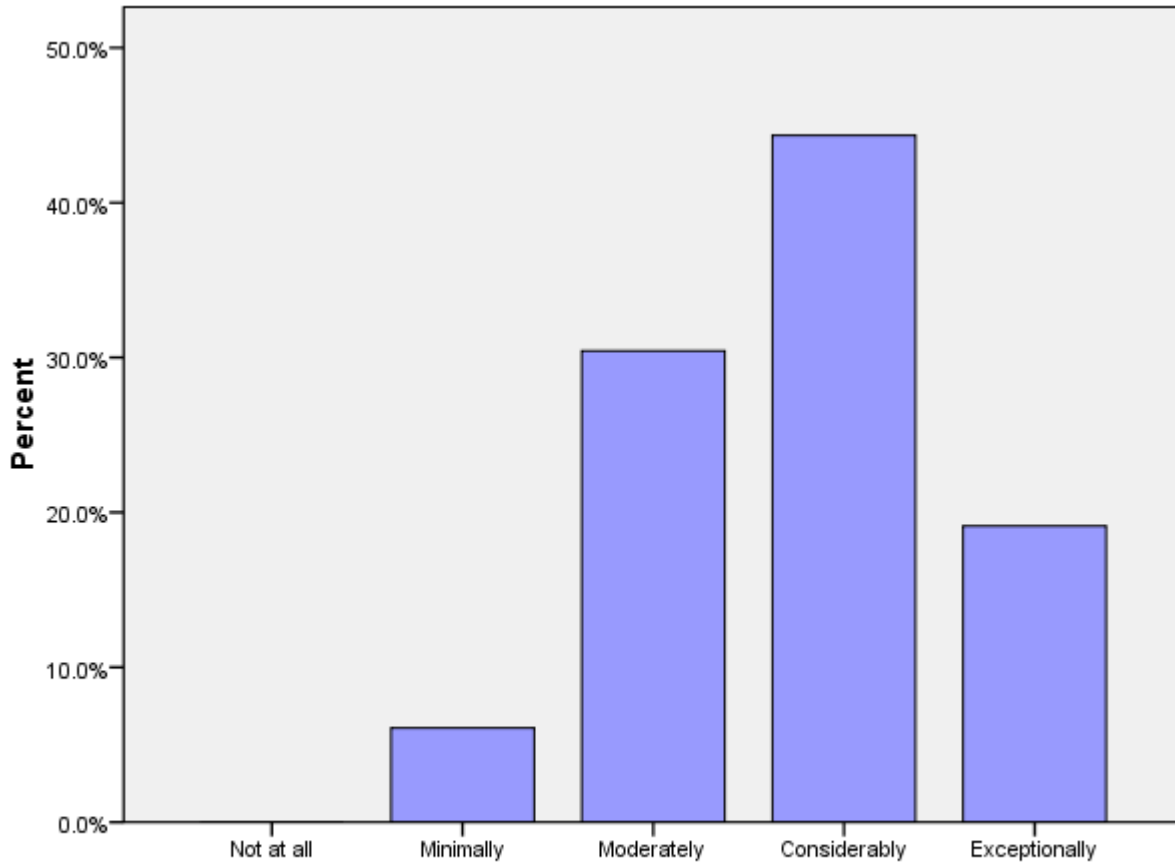
	Not at all	Minimally	Moderately	Considerably	Exceptionally	Total
J1D	4%	12%	27%	40%	17%	114



J1d: How personally rewarding do you find your work with counterparts/community partners?

J1e: How personally rewarding do you find your experience with other HCNs?

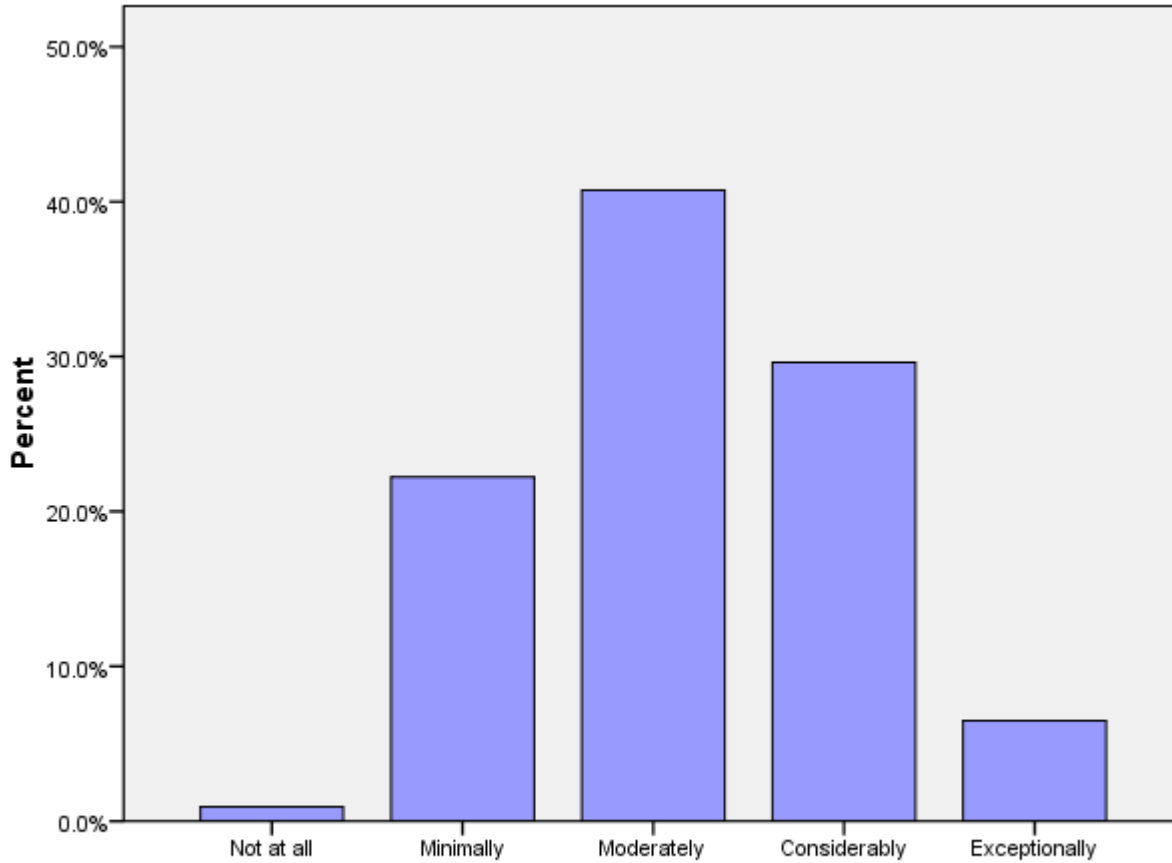
	Not at all	Minimally	Moderately	Considerably	Exceptionally	Total
J1E		6%	30%	44%	19%	115



J1e: How personally rewarding do you find your experience with other HCNs?

J2a (PCVs at post 9 months+ months): Please rate how well you think you achieved Goal 1.

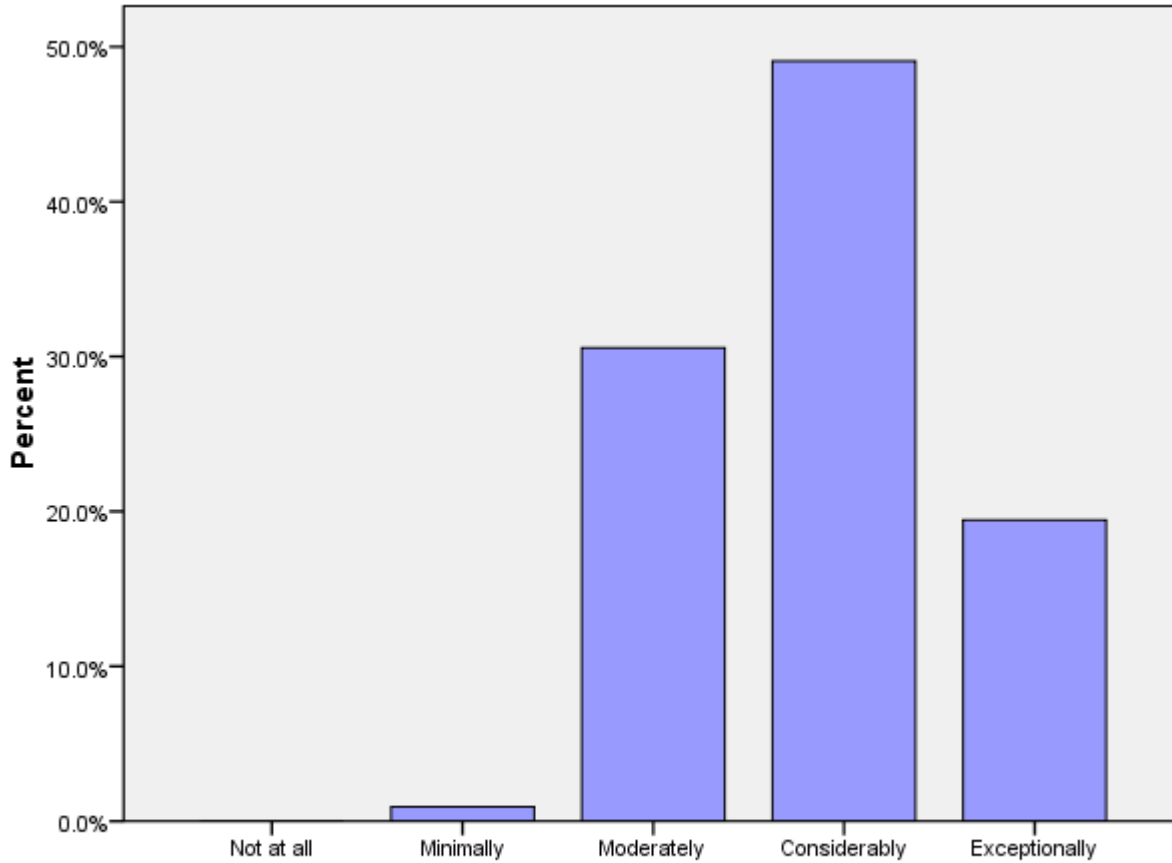
	Not at all	Minimally	Moderately	Considerably	Exceptionally	Total
J2A	1%	22%	41%	30%	6%	108



J2a (PCVs at post 9 months+ months): Rate how well you think you achieved Goal 1.

J2b: (PCVs at post 9 months+ months): Please rate how well you think you achieved Goal 2.

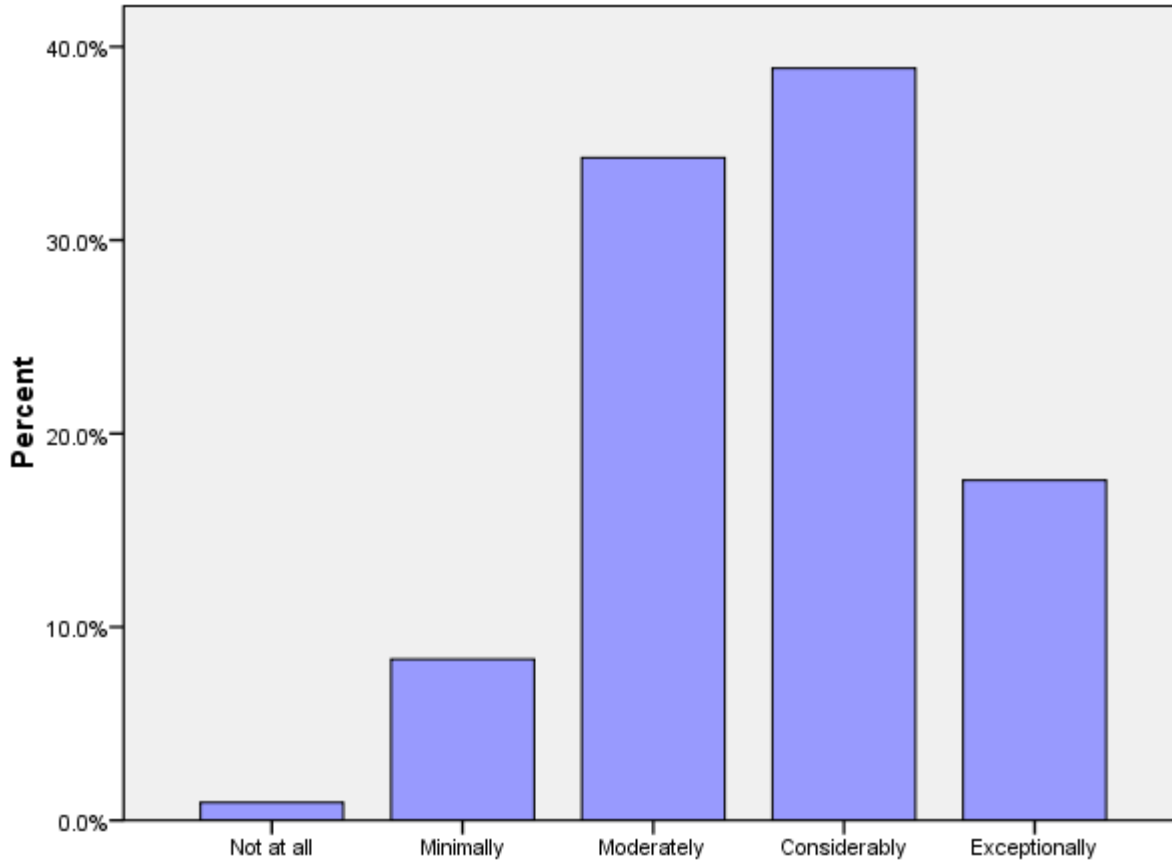
	Not at all	Minimally	Moderately	Considerably	Exceptionally	Total
J2B		1%	31%	49%	19%	108



J2b (PCVs at post 9 months+ months): Rate how well you think you achieved Goal 2.

J2c (PCVs at post 9 months+ months): Please rate how well you think you achieved Goal 3.

	Not at all	Minimally	Moderately	Considerably	Exceptionally	Total
J2C	1%	8%	34%	39%	18%	108



J2c (PCVs at post 9 months+ months): Please rate how well you think you achieved Goal 3.

J3: Today, would you make the same decision to join the Peace Corps?

	No	Not likely	Possibly	Probably	Definitely	Total
J3		3%	10%	23%	63%	115

J4: Would you recommend Peace Corps service to others you think are qualified?

	No	Not likely	Possibly	Probably	Definitely	Total
J4		3%	11%	30%	56%	114

J5: Do you intend to complete your Peace Corps service?

	No	Not sure	Yes	Might extend	Total
J5		3%	84%	12%	115

J6: Would your host country benefit most if the Peace Corps program was---?

	Discontinued	Reduced	Refocused/redesigned	Maintained as is	Expanded	Total
J6	2%	1%	70%	17%	11%	115

K. Activities After Peace Corps Service

This section reports on Volunteers' plans for after they have completed their Peace Corps Service.

K1a: What are your plans after your Peace Corps service? Work in government.

Government			
In the U.S.	In your host country	In another country	N
75%	6%	31%	16

* Percent of cases was used. Percentages will be greater than 100 since Volunteers were asked to select all that applied.

K1b: What are your plans after your Peace Corps service? Work in the private sector.

Private Sector			
In the U.S.	In your host country	In another country	N
91%	9%	13%	23

* Percent of cases was used. Percentages will be greater than 100 since Volunteers were asked to select all that applied.

K1c: What are your plans after your Peace Corps service? Work for an NGO.

NGO			
In the U.S.	In your host country	In another country	N
75%	6%	25%	16

* Percent of cases was used. Percentages will be greater than 100 since Volunteers were asked to select all that applied.

K1d: What are your plans after your Peace Corps service? Work for PC Response.

Peace Corps Response			
In the U.S.	In your host country	In another country	N
83%	33%	33%	6

* Percent of cases was used. Percentages will be greater than 100 since Volunteers were asked to select all that applied.

K1e: What are your plans after your Peace Corps service? Continue to participate in volunteer activities.

Volunteer Activities			
In the U.S.	In your host country	In another country	N
83%	3%	31%	29

* Percent of cases was used. Percentages will be greater than 100 since Volunteers were asked to select all that applied.

K1f: What are your plans after your Peace Corps service? Graduate school/academic credentialing.

Graduate School			
In the U.S.	In your host country	In another country	N
89%	0%	18%	28

* Percent of cases was used. Percentages will be greater than 100 since Volunteers were asked to select all that applied.

K1g: What are your plans after your Peace Corps service? Travel.

Travel			
In the U.S.	In your host country	In another country	N
62%	14%	73%	37

* Percent of cases was used. Percentages will be greater than 100 since Volunteers were asked to select all that applied.

K1h: What are your plans after your Peace Corps service? Other.

Other			
In the U.S.	In your host country	In another country	N
75%	0%	75%	4

* Percent of cases was used. Percentages will be greater than 100 since Volunteers were asked to select all that applied.

K2: How prepared do you feel to share your Peace Corps experience and knowledge of your host country with others in the United States when you return?

	Not at all	Minimally	Moderately	Considerably	Total
How prepared do you feel to share your Peace Corps experience and knowledge of your host country with others in the United States when you return?	0%	5%	19%	76%	58

K3: How well do you feel Peace Corps has prepared you for life in the U. S. after you return?

	Not at all	Minimally	Moderately	Considerably	Exceptionally	Total
How well do you feel Peace Corps has prepared you for life in the U. S. after your return?	9%	24%	33%	28%	7%	58

K6: Have your life/career goals changed because of your Peace Corps service?

	No	Yes	Total
Have your life/career goals changed because of your Peace Corps service?	43%	57%	56

K7: How well informed are you about the following opportunities for returned Volunteers:

	Not informed	Somewhat informed	Well informed	N
Peace Corps Response	38%	50%	12%	58
Peace Corps' Fellows/USA program	9%	62%	29%	58
Noncompetitive eligibility	21%	66%	14%	58
RPCV Career Center in Washington, D.C.	59%	31%	10%	58
Returned Volunteer Services	50%	41%	9%	58

K8: How did you first learn about the Fellows/USA program?

Learn about Fellows/USA program	PC Website	47%	53
	Word of mouth	34%	
	From a recruiter	19%	
	At COS Conference	15%	
	At IST	13%	
	At PST	9%	
	Mid-service mailing from PC	6%	
	University website	6%	
	Other	6%	
	From staff in the host country's PC office	4%	
	Hotline	2%	
	At post's information resource center	0%	
	N		

* Percent of cases was used. Percentages will be greater than 100 since Volunteers were asked to select all that applied.

K9: Which of the following resources do you think will be helpful as you exit Peace Corps service?

K9 Resources	RPCV Handbook	53%	
	Electronic newsletter with job postings and career advice	53%	
	Career Resource Manual	51%	
	Applying to federal government with RPCV noncompetitive eligibility	51%	
	RPCV career conferences	47%	
	List of RPCVs willing to talk to me about their careers	44%	
	Access to free job bulletins	40%	
	RPCV job search webinars	32%	
	Guide to speaking about my PC service to others (third goal)	28%	
	Connection with RPCVs through a mentoring program	23%	
	NOT SURE	23%	
	Self-assessment software (SIGI 3)	19%	
	Other	4%	
N			57

* Percent of cases was used. Percentages will be greater than 100 since Volunteers were asked to select all that applied.

K10: Which of the following third goal (helping promote a better understanding of peoples on the part of Americans) activities do you plan to do when you return to the U. S.?

K10 Third Goal	Continue with volunteerism and service learning	86%	58
	Speak to a group of adults about my experience	67%	
	Speak to school age children about my experience	62%	
	Join a RPCV group	59%	
	Write stories from my PC service on my own	48%	
	Participate in PC Week	28%	
	Obtain and use PC third goal resources	12%	
	Write stories from my PC service in conjunction with CWWS	7%	
	NOT SURE	3%	
	Other	2%	
N			

* Percent of cases was used. Percentages will be greater than 100 since Volunteers were asked to select all that applied.