



**Peace Corps Volunteer  
2009 Annual Volunteer Survey**

**Dominican Republic  
October 1, 2009**

**Office of Strategic Information, Research and Planning**

## **Table of Contents**

<b>Introduction to the 2009 Annual Volunteer Survey Report .....</b>	<b>3</b>
<b>Overview of the Post's 2009 Volunteer Survey Respondents.....</b>	<b>4</b>
<b>A. Applying to the Peace Corps.....</b>	<b>6</b>
<b>B. Preparation for the Peace Corps.....</b>	<b>8</b>
<b>C. Your Peace Corps Assignment .....</b>	<b>10</b>
<b>D. Training for Peace Corps Assignment .....</b>	<b>16</b>
<b>E. Volunteer Assignment Goals and Impact.....</b>	<b>20</b>
<b>F. Peace Corps Support.....</b>	<b>28</b>
<b>G. Your Safety and Security .....</b>	<b>36</b>
<b>H. Volunteers working in HIV/AIDS.....</b>	<b>45</b>
<b>I. Your Life in the Peace Corps .....</b>	<b>46</b>
<b>J. Overall Assessment of Peace Corps Service .....</b>	<b>51</b>
<b>K. Activities After Peace Corps Service.....</b>	<b>60</b>

## **Introduction to the 2009 Annual Volunteer Survey Report**

This country report contains the tables and charts from the Volunteers in your country who completed the 2009 Annual Volunteer Survey (AVS). The results provide a picture of the activities, experiences and views of Peace Corps Volunteers in 2009. The results show areas where Volunteers' needs are met and identify areas where improvements may be needed. The survey was fielded from May through August 2009.

A core set of questions was asked of all Volunteers. For the first time, Volunteers were also asked a series of questions relevant to their time in country:

- Volunteers in country 8 or less months were asked about applying to and preparing for the Peace Corps.
- Volunteers in country 18 or less months were asked about the effectiveness of their pre-service training (PST).
- Volunteers in country 19 or more months were asked about their post-service plans, as well as the Peace Corps' resources for their post-service transition.

Tables and graphs are labeled by survey section and the survey question. The tables show the percent of post respondents that selected each choice and the total number of post respondents that answered the question. The number of responses for each question will vary, depending on:

- whether the question was asked of all Volunteers or only the Volunteers in-country a certain number of months and
- how many of the Volunteers who were "eligible" to answer the question did respond.

Most survey questions asked respondents to select only one from a set of choices. The percentages for the "select one" responses add up to 100 percent. Other questions asked Volunteers to "mark all that apply" in situations, for example, where it is likely that respondents are involved in more than one secondary activity. The percentages of the "mark all that apply" responses will total more than 100 percent; each percentage equals the number of respondents selecting that choice divided by the number of respondents who answered the question.

Posts are encouraged to compare these 2009 results with the 2006 and 2008 survey results to note trends and changes over time. Because questions are revised from one survey to the next, a crosswalk between the 2008 and 2009 questions is posted on the OSIRP intranet page under 2009 AVS Reports "Reference Documents." The earlier 2008 survey global, regional and post reports are also posted on the OSIRP Intranet page.

Volunteers' extensive narrative responses to the 29 open-ended questions on the survey are in the post's 2009 Annual Volunteer Survey Open Ended Responses report. All Volunteers' narrative responses to key questions will be analyzed for global themes and presented in a later report.

The number of surveys for each post includes surveys submitted online by Volunteers and completed paper surveys sent to the Peace Corps headquarters for hand-entry into the online survey system. The final count may include mostly completed partial surveys added to the final dataset after the survey closed.

## **Overview of the Post's 2009 Volunteer Survey Respondents**

This overview presents basic information about the characteristics of Volunteers who completed the 2009 Annual Volunteer Survey at post.

**Completed Surveys by Months in Country**

	8 months or less		9 to 18 months		19 months or more		Total	
	Number	Percent	Number	Percent	Number	Percent	Number	Percent
Months3grp	31	20%	73	48%	48	32%	152	100%

**L1: What is your age?**

	20-29	30-49	50+	Total
AGE3grp	96%	3%	1%	149

**L2: What is your gender?**

	Female	Male	Total
GENDER	68%	32%	145

**Completed surveys by project.**

	Count	Column N %
Agro forestry/Forestry Extension	1	1%
Community Economic Development	28	18%
Community Environmental Development	33	22%
Healthy Communities	18	12%
ICT for Education	29	19%
Special Education	1	1%
Water Safe to Drink	12	8%
Youth, Family & Community Development	30	20%
Other. Please specify		
Total	152	100%

**C2: Which best describes the focus of your primary assignment/work?**

	Percent	Number
C2 Youth development	18%	27
Information & communications technology (ICT)	16%	25
Environmental education	15%	23
Business education/advising	12%	18
Health extension	11%	17
Community development	9%	13
Water sanitation	7%	11
Other: Please specify	3%	4
Agroforestry	3%	4
HIV/AIDS	2%	3
NGO development	2%	3
Teacher training	1%	1
Math/science teaching	1%	1
English teaching	1%	1
Agriculture/fish/livestock	1%	1
Urban & regional planning/municipal development		
Forestry/parks		
Other education		
Total	100%	152

**C2.TEXT: Which of the following initiatives does your primary work include? Other (specify)**

	PERCENT	NUMBER
C2.TEXT	Open-ended results. Not responsive to request.	
Total	100%	152

## A. Applying to the Peace Corps

*This section reports Volunteers' motivations in applying and accepting a Peace Corps assignment.*

**A1: How important were the following factors in accepting a PC assignment?**

	Not Important	Somewhat important	Important	NA	Total
Different culture	13%	32%	55%		31
Work experience	3%	32%	65%		31
Help others	6%	3%	90%		31
International experience	3%	13%	84%		31
Language		13%	87%		31
Personal growth	3%	17%	80%		30
U. S. job market	29%	48%	23%		31
Serve my country	26%	32%	42%		31
Travel/adventure	6%	23%	68%	3%	31
Other: Please specify below	6%		12%	81%	16

**A1\_OTHER: How important were the following factors in accepting a PC assignment? Other (specify)**

	PERCENT	NUMBER
A1_OTHER	Open-ended results. Not responsive to request.	
Total	100%	152

**A2. What prompted you to apply to the PC? Mark all that apply.**

		PCV Responses	% Involved in Initiative	Total PCVs Responding
What prompted you to apply to PC	Personal interest in the Peace Corps	19	61%	
	Returned Peace Corps Volunteer (e.g., someone you met or know personally)	12	39%	
	Peace Corps campus or community information session	12	39%	
	Peace Corps website	12	39%	
	Peace Corps recruiter	5	16%	
	Article or book about the Peace Corps	5	16%	
	Other: Please specify	5	16%	
	Peace Corps material in the mail	4	13%	
	Radio, TV, or print advertisement	3	10%	
	Returned Peace Corps Volunteer who spoke to your school or group about the Peace Corps	2	6%	
	Total			31

Percents may total to more than 100% since Volunteers were asked to "Mark all that apply."

**A2.OTHER.TEXT: What prompted you to apply to the PC? Other (specify)**

	PERCENT	NUMBER
A2.OTHER.TEXT	Open-ended results. Not responsive to request.	
Total	100%	152

## **B. Preparation for the Peace Corps**

*This section reports on Volunteers' assessment of the materials and information available before their service.*

**B1: How useful was the information on the PC website in preparing you for the realities of living and working as a Volunteer?**

	Not at all 1	2	3	4	Extremely 5	Don't know (did not access information)	Total
B1	6%	16%	52%	19%	6%		31

**B2: How useful were the PC materials about your country in helping you prepare for your service?**

	Not at all 1	2	3	4	Extremely 5	Don't know (did not access information)	Total
B2	10%	10%	29%	35%	16%		31



**B3: How useful were the materials you received from the PC about your primary assignment in helping you prepare for your service?**

	Not at all 1	2	3	4	Extremely 5	Don't know (did not access information)	Total
B3	6%	19%	32%	35%	6%		31

**B4: How useful were the materials you received from the PC regarding the need for flexibility in adapting to your work?**

	Not at all 1	2	3	4	Extremely 5	Don't know (did not access information)	Total
B4	3%	3%	31%	45%	14%	3%	29

**B7: How prepared do you feel to meet the challenges of PC service?**

	Not at all 1	2	3	4	Exceptionally 5	Total
B7	3%		26%	61%	10%	31

## C. Your Peace Corps Assignment

*This section reports Volunteers' primary assignment work and secondary activities. The term "primary assignment" refers to the Volunteers' assignment which is part of an overall project plan designed by your host country partners and in-country Peace Corps staff.*

**C3: Which of the following activities does your primary assignment/work include? Mark all that apply.**

		PCV Responses	% Involved in Initiative	Total PCVs Responding
\$C3PrmAct	Working with youth	85	56%	
	HIV/AIDS	44	29%	
	English teaching	38	25%	
	Environment work	37	25%	
	Working with NGO(s)	37	25%	
	Information and communications technology (ICT)	36	24%	
	Business advertising	33	22%	
	Girls' education	33	22%	
	Income generation	33	22%	
	Literacy	29	19%	
	Microenterprise development	27	18%	
	WID/GAD	27	18%	
	Arts	26	17%	
	Water and sanitation	26	17%	
	Natural resources management	23	15%	
	Sports/fitness	23	15%	
	Rural development	23	15%	
	Nutrition education	22	15%	
	Library development	20	13%	
	Mobilize host country nationals (HCNs) to volunteer	15	10%	
	Biodiversity conservation	13	9%	

Child survival	10	7%	
World Wise Schools/ Correspondence Match	10	7%	
Household food security	9	6%	
Working with special groups (e.g., disabled, elderly, ethnic minorities, orphans)	9	6%	
Community food security (production/marketing)	8	5%	
Urban development/municipal development	7	5%	
Other: Please specify	6	4%	
Total			151

Percents may total to more than 100% since Volunteers were asked to "Mark all that apply."

**C3: Which of the following activities does your primary assignment/work include? Other  
(specify)**

	Column N %	Count	Row N %
C3.OTHER.TEXT	Open-ended results. Not responsive to request.		
Total		152	100%

**C4: Hours Spent on Primary Assignment During Average Work Week**

	None	1-10 hrs	11-20 hrs	21-30 hrs	31-40 hrs	More than 40 hrs	Total
C4Hrs6grp	2%	16%	28%	26%	14%	14%	145

**C4: How many hours do you spend on your primary assignment during an average work week?**

	All Volunteers	Average	Lowest reported	Highest reported	Did not answer
C4	152	25.8	0	80	7

**C5: Which of the following do your secondary activities (other than your primary assignment work) include? Mark all that apply.**

	PCV Responses	% Involved in Initiative	Total PCVs Responding
\$C5SecAct English teaching	81	61%	
Working with youth	65	49%	
Arts	42	32%	
Sports/fitness	33	25%	
Girls' education	31	23%	
Income generation	27	20%	
Library development	27	20%	
HIV/AIDS	26	20%	
Literacy	26	20%	
Environment work	25	19%	
World Wise Schools/ Correspondence Match	23	17%	
Nutrition education	22	17%	
Working with NGO(s)	21	16%	
Rural development	20	15%	
Business advertising	17	13%	
Water and sanitation	17	13%	
WID/GAD	16	12%	
Mobilize host country nationals (HCNs) to volunteer	14	11%	
Microenterprise development	13	10%	
Other: Please specify	12	9%	
Natural resources management	9	7%	

Biodiversity conservation	8	6%	
Information and communications technology (ICT)	8	6%	
Working with special groups (e.g., disabled, elderly, ethnic minorities, orphans)	7	5%	
Urban development/municipal development	6	5%	
Community food security (production/marketing)	4	3%	
Child survival	3	2%	
Household food security	3	2%	
Total			133

Percents may total to more than 100% since Volunteers were asked to "Mark all that apply."

**C5: Which of the following do your secondary activities include? Other (specify)**

	Column N %	Count	Row N %
C5.OTHER.TEXT	Open-ended results. Not responsive to request.		
Total		152	100%

**C5: No Secondary Activities**

	Percent	Number
C5.NONE No	89%	136
Yes	11%	16
Total	100%	152

**C6: Hours Spent on Secondary Activities During Average Work Week**

	None	1-10 hrs	11-20 hrs	21-30 hrs	31-40 hrs	More than 40 hrs	Total
C6Hrs6grp		58%	30%	9%	1%	2%	138

**C6. How many hours do you spend on secondary activities during an average work week?**

	All Volunteers	Average	Lowest reported	Highest reported	Did not answer
C6	152	12.9	1	80	14

**C7: How personally satisfying is your--?**

	Not at all 1	2	3	4	Exceptionally 5	Total
Primary assignment	2%	14%	20%	46%	17%	152
Secondary project/activities	2%	9%	20%	45%	24%	139

## **D. Training for Peace Corps Assignment**

*This section reports Volunteers' assessments of the effectiveness of their Pre-Service Training and In-Service Training at post. In-Service Training (IST) includes: Reconnect; Technical IST; Mid-Service and Close of Service conferences; project management/leadership conferences; and other post-sponsored training sessions.*

**D1: (PCVs at post 18 months or less) How effective was your Pre-Service Training (PST) in preparing you to--**

	Not effective	Poor	Adequate	Effective	Very Effective	NA/No training	Total
Manage cultural differences	1%	1%	16%	49%	32%	1%	104
Deal with adjustment issues	1%	4%	25%	44%	24%	2%	103
Work with counterparts/community partners	2%	17%	35%	29%	15%	2%	103
Use language needed in work and social interactions		6%	19%	34%	40%	1%	103
Perform technical aspects of your work	2%	7%	38%	29%	22%	2%	103
Work on your project goals and objectives	2%	5%	30%	44%	18%	1%	103
Conduct a participatory community needs assessment (e.g., PACA)	1%	2%	19%	38%	38%	2%	102
Monitor your project goals and outcomes	3%	6%	34%	40%	17%	1%	103
Maintain your physical health	1%		15%	45%	38%	2%	103
Maintain your mental/emotional health	1%	10%	21%	37%	28%	3%	103
Maintain your personal safety and security	1%	1%	11%	41%	44%	3%	103



**D5: How effective was your In-Service Training (IST) in preparing you to--**

	Not effective	Poor	Adequate	Effective	Very Effective	NA/No training	Total
Manage cultural differences	1%	2%	28%	42%	16%	12%	113
Deal with adjustment issues	2%	4%	26%	44%	13%	12%	112
Build and strengthen working relationships with counterparts/community partners	1%	12%	29%	35%	17%	5%	113
Use language needed in work and social interactions	2%		28%	33%	31%	6%	112
Perform technical aspects of your work		4%	25%	41%	25%	5%	114
Work on your project goals and objectives	1%	5%	18%	39%	31%	6%	114
Conduct a participatory community needs assessment (e.g.,PACA)	3%	1%	24%	25%	22%	25%	111
Monitor project goals and outcomes	1%	4%	24%	47%	18%	6%	114
Maintain your physical health	3%	3%	18%	35%	33%	10%	113
Maintain your mental/emotional health	3%	4%	18%	39%	25%	11%	112
Maintain your personal safety and security		1%	18%	40%	35%	6%	113

**D8: Did you have this skill before joining the Peace Corps?**

	No/ No answer	Yes	Total
Skills specific to my assignment	46	105	151
Assessing community needs	97	55	152
Organizing/implementing community activities	55	96	151
Building capacity of local organizations	119	27	146
Monitoring, reporting, and evaluating my work	24	124	148
Designing and implementing training sessions	90	59	149

**D8: Is the skill needed for your Peace Corps work?**

	No/ No answer	Yes	Total
Skills specific to my assignment	7	141	148
Assessing community needs	5	145	150
Organizing/implementing community activities	4	146	150
Building capacity of local organizations	22	128	150
Monitoring, reporting, and evaluating my work	5	144	149
Designing and implementing training sessions	12	139	151

**D8: Have you had adequate Peace Corps training to acquire the skill?**

	No/ No answer	Yes	Total
Skills specific to my assignment	23	108	131
Assessing community needs	7	137	144
Organizing/implementing community activities	15	123	138
Building capacity of local organizations	60	75	135
Monitoring, reporting, and evaluating my work	27	105	132
Designing and implementing training sessions	31	108	139

## E. Volunteer Assignment Goals and Impact

*This section reports Volunteers' self-assessments of their impact on the individuals and organizations in the communities in which they serve. At the end of this section, Volunteers' third goal activities, participation in Coverdell World Wise School/Correspondence Match (CWWS/CM) and use of Peace Corps resources to support their work are reported in questions.*

**E1: To what extent does your Volunteer work assignment address the following?**

	Not at all 1	2	3	4	Exceptionally 5	NA	Total
Meets the objectives of the project plan	1%	11%	23%	38%	25%	3%	150
Builds local capacity for sustainability	4%	11%	37%	34%	13%	2%	151
Involves local people in planning and implementing activities	3%	5%	21%	42%	29%	1%	151
Complements other local development activities	5%	15%	26%	39%	11%	5%	151
Transfers skills to host country individuals and organizations	1%	3%	25%	50%	19%	1%	150
Mobilizes host country nationals (HCNs) to volunteer	8%	14%	38%	26%	9%	5%	151
Helps promote a better understanding of Americans on the part of the peoples served (goal 2)	2%	7%	21%	42%	27%	1%	151
Helps promote a better understanding of other peoples on the part of Americans (goal 3)	4%	9%	21%	34%	30%	2%	151

**E2: To what extent does your host community--?**

	Not at all 1	2	3	4	Exceptionally 5	NA	Total
Need the assistance that you provided		8%	27%	40%	25%		48
Want the assistance that you provided	2%	19%	25%	25%	29%		48

**E3: How much impact does your assignment have on the capacities of your host counterparts/community partners?**

	None 1	2	3	4	Exceptional 5	NA	Total
Ability to access information (e.g., library, Internet, etc.)	25%	13%	18%	23%	14%	7%	150
Leadership skills	7%	9%	26%	42%	13%	4%	151
Planning and management	5%	9%	25%	45%	13%	3%	151
Problem solving/critical thinking	6%	11%	28%	42%	10%	3%	151
Self-esteem	7%	11%	31%	33%	12%	7%	150
Technical skills	9%	11%	25%	35%	16%	4%	150
Use of local resources	6%	15%	31%	33%	11%	5%	150
Use of external resources (e.g., grants, international NGOs)	11%	15%	25%	29%	15%	6%	150
Better understanding of Americans	4%	6%	21%	42%	23%	3%	151
Other: Please specify below	10%		4%		2%	85%	52

**E3: How much impact does your assignment have on the capacities of your host counterparts/community partners? Other  
(specify)**

	Column N %	Count	Row N %
E3_OTHER	Open-ended results. Not responsive to request.		
Total		152	100%

**E4: How much impact does your assignment have on the capacities of your host individuals  
with whom you work?**

	None 1	2	3	4	Exceptional 5	NA	Total
Ability to access information (e.g., library, Internet, etc.)	17%	15%	21%	25%	15%	7%	150
Leadership skills	3%	10%	27%	45%	12%	4%	152
Planning and management	4%	15%	30%	38%	8%	5%	151
Problem solving/critical thinking	2%	10%	32%	42%	9%	4%	151
Self-esteem	3%	9%	28%	37%	19%	5%	152
Technical skills	3%	12%	29%	35%	16%	5%	152
Use of local resources	5%	15%	36%	28%	10%	7%	151
Use of external resources (e.g., grants, international NGOs)	10%	19%	33%	25%	7%	7%	151
Better understanding of Americans	3%	4%	21%	38%	31%	3%	151
Other: Please specify below	7%	2%	3%	2%	5%	81%	58

**E4: How much impact does your assignment have on the capacities of your host individuals with whom you work? Other  
(specify)**

	Column N %	Count	Row N %
E4_OTHER	Open-ended results. Not responsive to request.		
Total		152	100%

**E5: To what extent does your assignment enhance the capacities of organizations  
with whom you work?**

	None 1	2	3	4	Exceptional 5	NA	Total
Identifying and prioritizing organizational needs	9%	11%	26%	31%	9%	13%	151
Leadership	9%	13%	22%	32%	10%	14%	152
Management	10%	14%	20%	34%	9%	13%	150
Monitoring and evaluation	13%	14%	26%	25%	9%	12%	152
Planning and implementing organizational activities	10%	8%	25%	33%	12%	12%	152
Teamwork/participatory decision-making	7%	11%	26%	33%	12%	11%	152
Use of local resources	10%	11%	32%	28%	7%	13%	152
Ability to mobilize, manage, and sustain local volunteers	11%	17%	31%	21%	7%	13%	150
Other: Please specify below	5%		8%	5%		81%	59

**E5: To what extent does your assignment enhance the capacities of organizations with  
whom you work? Other (specify)**

	Column N %	Count	Row N %
E5_OTHER	Open-ended results. Not responsive to request.		
Total		152	100%

**E6: How effective have you been in transferring knowledge and skills to help the following persons or groups build their capacities?**

	Not at all 1	2	3	4	Exceptionally 5	NA	Total
Your counterpart/community partner	11%	15%	26%	30%	12%	5%	152
Another institution/organization	7%	20%	29%	28%	5%	11%	152
Members of your host community	3%	7%	28%	42%	17%	4%	152
Other: Please specify below	4%		7%	4%	2%	83%	46

**E7: To what extent have HC individuals gained a better understanding of Americans? (Including "Too early to tell")**

	Not at all	Minimally	Moderately	Considerably	Exceptionally	Too early to tell	Total
E7	0%	2%	19%	59%	16%	5%	152

**E7: To what extent have HC individuals gained a better understanding of Americans? (Excluding "Too early to tell")**

	Not at all	Minimally	Moderately	Considerably	Exceptionally	Total
E7		2%	20%	61%	17%	145



**E9. In which of the following third goal activities have you participated during your PC service?**

		PCV Responses	% Doing This	Total PCVs Responding
\$E9Goal3Acts	Electronic updates	131	89%	
	Hosting American visitors	113	77%	
	Personal website or blog	75	51%	
	Enrollment in the CWWS/CMS program	44	30%	
	Hard copy/paper update	44	30%	
	While on home leave, spoke at a school or community group	33	22%	
	Pen pal program/letter exchange	18	12%	
	Podcasted/created a slide show or video posted online	13	9%	
	Other please specify	9	6%	
	Peace Corps Week activities	8	5%	
	Total			147

**E9: When asked about third goal activities, Volunteer answered "No involvement in third goal activities"**

	Have done third goal activities	No third goal activities	Total
Peace Corps' third goal is to "help promote a better understanding of other peoples on the part of Americans." In which of the following third goal activities, including your contact with family and friends, have you participated during your Peace Corps	98%	2%	152

**E10: Would you recommend participation in the CWWS CMS to other Volunteers?**

	I have not participated in CWWS/CM.	I have participated in CWWS/CM & would recommend it	I have participated in CWWS/CM and would NOT recommend it	Total
E10	70%	27%	3%	149

**E11: To what extent have Americans gained a better understanding of HCNs? (Including "Too early to tell")**

	Not at all	Minimally	Moderately	Considerably	Exceptionally	Too early to tell	Total
E11	0%	3%	23%	43%	27%	4%	152

**E11: To what extent have Americans gained a better understanding of HCNs? (Excluding "Too early to tell")**

	Not at all	Minimally	Moderately	Considerably	Exceptionally	Total
E11		3%	24%	45%	28%	146

**E12: Which of the following resources have been useful to you in your third goal activities?**

	Yes
Coverdell World Wise Schools staff (Useful)	28
Contact with other Peace Corps staff in Washington, D.C. (Useful)	18
Information at staging (Useful)	60
Information from your post sent to you before departure (Useful)	66
Internet (Useful)	118
Invitation kits (Useful)	73
Material in staging packet (Useful)	74
Peace Corps staff at post (e.g., World Wise School contact) (Useful)	32
Recruiting (Useful)	43
Resources available from Coverdell World Wise Schools (Useful)	21
Resources available on Peace Corps website (e.g., third goal section) (Useful)	52
Training on third goal (Useful)	36
Other: Please specify below (Useful)	2

**E12: Which of the following resources would/will be helpful to you in your third goal activities?**

	Yes
Coverdell World Wise Schools staff (Would be helpful)	60
Contact with other Peace Corps staff in Washington, D.C. (Would be helpful)	44
Information at staging (Would be helpful)	24
Information from your post sent to you before departure (Would be helpful)	30
Internet (Would be helpful)	18
Invitation kits (Would be helpful)	15
Material in staging packet (Would be helpful)	12
Peace Corps staff at post (e.g., World Wise School contact) (Would be helpful)	30
Recruiting (Would be helpful)	24
Resources available from Coverdell World Wise Schools(Would be helpful)	38
Resources available on Peace Corps website (e.g., third goal section) (Would be helpful)	34
Training on third goal (Would be helpful)	39
Other: Please specify below (Would/will be helpful)	2

**E12: Other useful/helpful resources? Other (specify)**

	Column N %	Count	Row N %
E12_OTHER	Open-ended results. Not responsive to request.		
Total		152	100%

**E13: Do you know about the Peace Corps Partnership Program (PCPP)?**

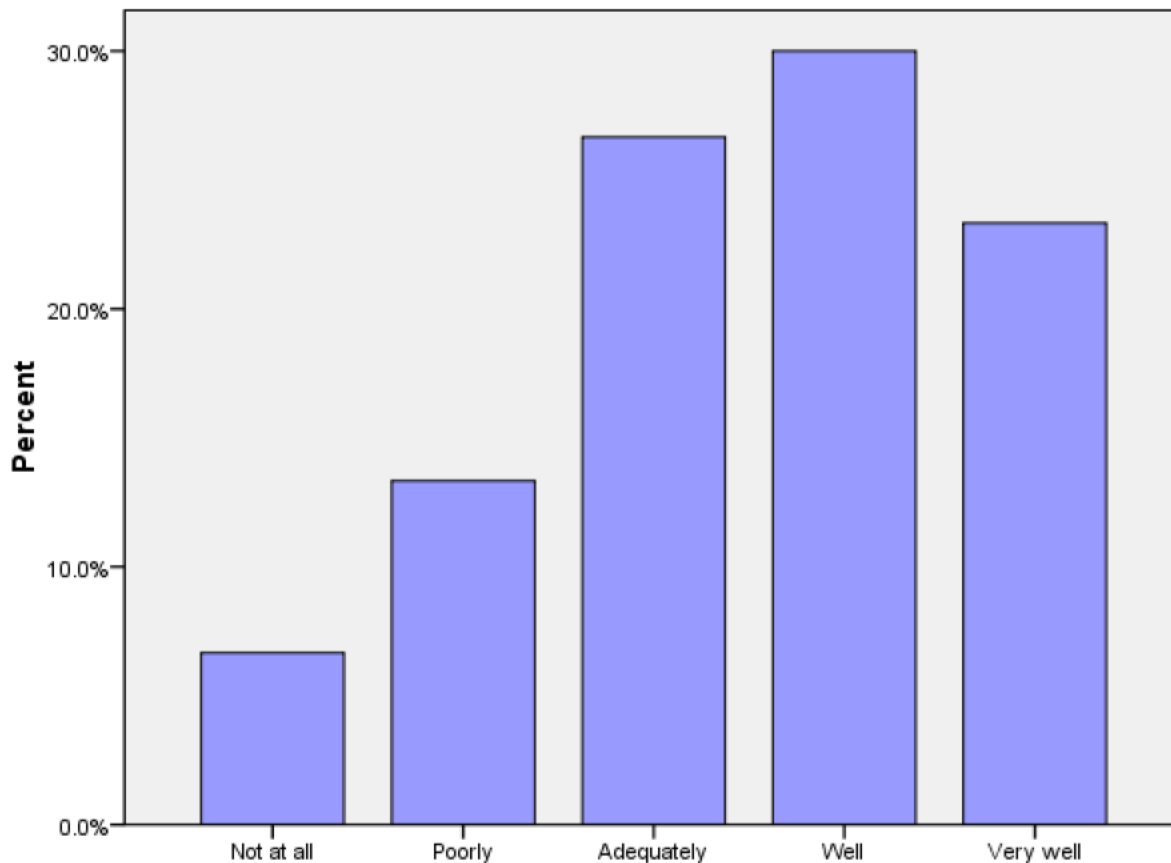
	No	Yes, but I haven't used it.	Yes, I have used it.	Total
E13	22%	42%	36%	152

## **F. Peace Corps Support**

*This section reports Volunteers' assessments of in-country Peace Corps.*

**F1 (PCVs at post 9+ months): How prepared for your arrival were the host people with whom you work?**

	Not at all	Poorly	Adequately	Well	Very well	Total
F1	7%	13%	27%	30%	23%	30



**F1: When you arrived at your community, how prepared for your arrival were the host people with whom you work?**

**F2: How satisfied are you with the health care you received from your PCMO(s)?**

	Not at all	Minimally	Adequately	Considerably	Exceptionally	Not Used	Total
F2			5%	22%	70%	2%	149

**F3: How satisfied are you with the following support provided by in-country PC staff?**

	Not at all 1	2	3	4	Completely 5	NA	Total
Administrative/logistical	2%	10%	20%	46%	22%		150
Cross-cultural		6%	23%	44%	25%	3%	150
Emotional	3%	6%	23%	34%	29%	5%	150
Feedback on my work reports	15%	11%	29%	21%	13%	11%	150
Job assignment	4%	21%	23%	32%	19%		149
Language learning	3%	6%	20%	41%	29%	1%	148
Medical		2%	3%	29%	65%	1%	150
Safety and security	1%	3%	16%	32%	47%		150
Site selection/preparation	10%	19%	25%	23%	21%	1%	150
Technical skills	2%	7%	30%	37%	24%		148

**F4: How satisfied are you with the PC time and resources allocated to mental health/adjustment issues?**

	Not at all satisfied 1	2	3	4	Completely satisfied 5	Total
F4	4%	8%	27%	37%	24%	150

**F5: What level of PC support have you received to help cope with stress from issues such as HIV/AIDS, food insecurity, etc. in your community? (Including PCVs w/no need for support)**

	No support	Minimal support	Adequate support	Considerable support	Exceptional support	NA / I have no need for support	Total
F5	3%	9%	17%	13%	13%	43%	150

**F5: What level of PC support have you received to help cope with stress from issues such as HIV/AIDS, food insecurity, etc. in your community? (Excluding PCVs w/no need for support)**

	No support	Minimal support	Adequate support	Considerable support	Exceptional support	Total
F5	6%	16%	31%	24%	24%	85

**F6: How would you rate your interaction with the Country Director in terms of the following?**

	Not adequate	Adequate	Total
Responsiveness to my issues	2%	98%	150
Informative content	3%	97%	148
My comfort level discussing issues	5%	95%	151
Adequacy of visits	11%	89%	148

**F6: How would you rate your interaction with the PTO/SRPTC in terms of the following?**

	Not adequate	Adequate	Total
Responsiveness to my issues	6%	94%	136
Informative content	9%	91%	136
My comfort level discussing issues	7%	93%	136
Adequacy of visits	15%	85%	135

**F6: How would you rate your interaction with the APCD/Program Manager in terms of the following?**

	Not adequate	Adequate	Total
Responsiveness to my issues	21%	79%	148
Informative content	20%	80%	149
My comfort level discussing issues	28%	72%	149
Adequacy of visits	23%	77%	149

**F6: How would you rate your interaction with the PCMO in terms of the following?**

	Not adequate	Adequate	Total
Responsiveness to my issues	0%	100%	145
Informative content	1%	99%	144
My comfort level discussing issues	2%	98%	145
Adequacy of visits	6%	94%	143

**F6: How would you rate your interaction with the Safety and Security Coordinator in terms of the following?**

	Not adequate	Adequate	Total
Responsiveness to my issues	7%	93%	147
Informative content	7%	93%	148
My comfort level discussing issues	6%	94%	148
Adequacy of visits	12%	88%	144

**F6: How would you rate your interaction with the Training Manager in terms of the following?**

	Not adequate	Adequate	Total
Responsiveness to my issues	8%	92%	143
Informative content	10%	90%	144
My comfort level discussing issues	7%	93%	142
Adequacy of visits	13%	87%	139

**F6: How would you rate your interaction with administrative staff in terms of the following?**

	Not adequate	Adequate	Total
Responsiveness to my issues	18%	82%	147
Informative content	7%	93%	148
My comfort level discussing issues	8%	92%	148
Adequacy of visits	13%	87%	141

**F6: How would you rate your interaction with other post staff (please specify) in terms of the following?**

	Not adequate	Adequate	Total
Responsiveness to my issues	17%	83%	18
Informative content	11%	89%	18
My comfort level discussing issues	12%	88%	17
Adequacy of visits	14%	86%	22



**F7: To what extent is your CD aware of Volunteer issues and concerns through interactions with  
Volunteers?**

	Not at all	Minimally	Adequately	Considerably	Completely	Total
F7		1%	19%	47%	32%	149

**F8: What is the most effective way you use to communicate with PC staff?**

Most effective	Cellphone (voice)	63%	94
	In-person visits	26%	38
	Email/ Internet	9%	13
	Text messaging	2%	3
	Telephone not at residence or work	1%	1
	Other. Please specify		
	Telephone at residence or work		
	Letters		
	CB radio		
	Total	100%	149

**F8: What is the second most effective way you use to communicate with PC staff?**

Second most effective	Email/ Internet	49%	72
	Cellphone (voice)	28%	41
	In-person visits	16%	23
	Text messaging	5%	8
	Telephone at residence or work	3%	4
	Other. Please specify		
	Telephone not at residence or work		
	Letters		
	CB radio		
	Total	100%	148

**F8: What is the third most effective way you use to communicate with PC staff?**

(C11_THREE) Third most effective	In-person visits	42%	62
	Email/ Internet	32%	48
	Text messaging	13%	19
	Telephone at residence or work	5%	8
	Cellphone (voice)	5%	7
	CB radio	3%	4
	Other. Please specify		
	Telephone not at residence or work		
	Letters		
	Total	100%	148

**F9: How do you rate the effectiveness of your communication resources for contacting in-country PC staff?**

	Very poor	Poor	Adequate	Good	Excellent	Total
F9	1%	3%	14%	42%	40%	151

## **G. Your Safety and Security**

*This section reports on how safe and informed about their safety Volunteers feel. Their experiences with reported and unreported crimes are summarized.*

### **G1: How safe do you feel...?**

	Not at All Safe	Often Safe	Adequately Safe	Usually Safe	Very Safe	Total
Where you live	1%	4%	10%	30%	55%	152
Where you work	1%	1%	11%	24%	64%	152
When you travel in-country		7%	24%	47%	22%	152
City where main Peace Corps office is located	1%	9%	28%	40%	22%	152

### **G2: Please indicate the number of times you experienced the following types of discrimination/harassment.**

	Never	Once	2-5 times	6-10 times	11-25 times	26+ times	Total
Age	92.7%	1.6%	2.4%	.8%		2.4%	124
Anti-American	81.8%	7.4%	8.3%		1.7%	.8%	121
Disability	99.2%				.8%		123
Gender	71.3%	.8%	9.8%	4.9%	3.3%	9.8%	122
Racial/color	81.0%	1.7%	5.0%	4.1%	1.7%	6.6%	121
Religious	89.4%	3.3%	2.4%	2.4%		2.4%	123
Sexual (verbal)	44.5%	4.7%	10.2%	6.2%	5.5%	28.9%	128
Sexual (physical)	85.7%	5.6%	6.3%	1.6%		.8%	126
Sexual orientation	95.1%	.8%	1.6%	.8%	.8%	.8%	122

**G2: Please indicate the number of times you reported discrimination/harassment events to PC.**

	Never	Once	2-5 times	6-10 times	11-25 times	26+ times	Total
Age	100.0%						9
Anti-American	100.0%						23
Disability	100.0%						2
Gender	100.0%						36
Racial/color	100.0%						23
Religious	100.0%						13
Sexual (verbal)	95.4%	4.6%					65
Sexual (physical)	77.8%	16.7%	5.6%				18
Sexual orientation	83.3%			16.7%			6

**G3: Please indicate the number of times you experienced the following types of crimes.**

	Never	Once	2-5 times	6-10 times	11-25 times	26+ times	Total
Burglary	78.7%	11.8%	9.4%				127
Theft	72.0%	23.2%	4.0%	.8%			125
Robbery	88.6%	11.4%					123
Physical assault	97.5%	2.5%					119
Aggravated assault	98.3%	1.7%					119
Sexual assault	95.0%	4.2%	.8%				119
Rape	99.1%	.9%					116

**G3: Please indicate the number of times you reported the following crimes to Peace Corps.**

	Never	Once	2-5 times	6-10 times	11-25 times	26+ times	Total
Burglary	21.4%	67.9%	10.7%				28
Theft	36.1%	58.3%	5.6%				36
Robbery	13.3%	86.7%					15
Physical assault	100.0%						5
Aggravated assault	50.0%	50.0%					4
Sexual assault	62.5%	37.5%					8
Rape	50.0%	50.0%					2

**G4: If you did not report your experience with burglary, please your reason(s) for not reporting.**

	PCV Responses	% Reason Not Rptd	Total PCVs Responding
\$NoRpBurg I felt it was too minor or common to report	10	77%	
I did not think the PC could help	4	31%	
It might hurt my relationship with the community	4	31%	
Other	1	8%	
I believed it could result in changing sites			
Concerns of a possible breach in confidentiality			
Reporting might result in disciplinary action against me			
Total			13

\*Percents may total to more than 100% since Volunteers were asked to "mark all that apply."

**G4: If you did not report your experience with theft, please your reason(s) for not reporting.**

		PCV Responses	% Reason Not Rptd	Total PCVs Responding
\$NoRpTheft	I felt it was too minor or common to report	12	71%	
	Other	4	24%	
	I did not think the PC could help	3	18%	
	It might hurt my relationship with the community	2	12%	
	I believed it could result in changing sites			
	Concerns of a possible breach in confidentiality			
	Reporting might result in disciplinary action against me			
	Total			17

\*Percents may total to more than 100% since Volunteers were asked to "mark all that apply."

**G4: If you did not report your experience with robbery, please your reason(s) for not reporting.**

		PCV Responses	% Reason Not Rptd	Total PCVs Responding
\$NoRpRobb	Other	2	50%	
	I did not think the PC could help	1	25%	
	I felt it was too minor or common to report	1	25%	
	I believed it could result in changing sites			
	Concerns of a possible breach in confidentiality			
	Reporting might result in disciplinary action against me			
	It might hurt my relationship with the community			
	Total			4

\*Percents may total to more than 100% since Volunteers were asked to "mark all that apply."



**G4: If you did not report your experience with physical assault, please your reason(s) for not reporting.**

		PCV Responses	% Reason Not Rptd	Total PCVs Responding
\$NoRpPhAs	Other	3	60%	
	I did not think the PC could help	1	20%	
	Reporting might result in disciplinary action against me	1	20%	
	I believed it could result in changing sites			
	I felt it was too minor or common to report			
	Concerns of a possible breach in confidentiality			
	It might hurt my relationship with the community			
	Total			

5

\*Percents may total to more than 100% since Volunteers were asked to "mark all that apply."

**G4: If you did not report your experience with aggravated assault, please your reason(s) for not reporting.**

		PCV Responses	% Reason Not Rptd	Total PCVs Responding
\$NoRpAgAs	Other	2	100%	
	I did not think the PC could help			
	I believed it could result in changing sites			
	I felt it was too minor or common to report			
	Concerns of a possible breach in confidentiality			
	Reporting might result in disciplinary action against me			
	It might hurt my relationship with the community			
	Total			2

\*Percents may total to more than 100% since Volunteers were asked to "mark all that apply."

**G4: If you did not report your experience with sexual assault, please your reason(s) for not reporting.**

		PCV Responses	% Reason Not Rptd	Total PCVs Responding
\$NoRpSxAs	I felt it was too minor or common to report	3	50%	
	Other	3	50%	
	I did not think the PC could help	2	33%	
	I believed it could result in changing sites	1	17%	
	Concerns of a possible breach in confidentiality			
	Reporting might result in disciplinary action against me			
	It might hurt my relationship with the community			
	Total			
				6

\*Percents may total to more than 100% since Volunteers were asked to "mark all that apply."

**G4: If you did not report your experience with rape, please your reason(s) for not reporting.**

		PCV Responses	% Reason Not Rptd	Total PCVs Responding
\$NoRpRape	Other	2	100%	
	I did not think the PC could help			
	I believed it could result in changing sites			
	I felt it was too minor or common to report			
	Concerns of a possible breach in confidentiality			
	Reporting might result in disciplinary action against me			
	It might hurt my relationship with the community			
	Total			2

\*Percents may total to more than 100% since Volunteers were asked to "mark all that apply."

## **H. Volunteers working in HIV/AIDS**

*This section reports Volunteers' involvement in HIV/AIDS and their perceived effectiveness of their HIV/AIDS related activities.*

**H1: Which of the following best describes your involvement in HIV/AIDS activities?**

	HIV/AIDS work is my primary assignment.	HIV/AIDS work is part of my secondary activities.	Involved in HIV/AIDS efforts, not primary/secondary work	I have not been involved in any HIV/AIDS related activities	Total
H1	23%	23%	12%	43%	151

**H2: How well has PC training prepared you to undertake your HIV/AIDS activities?**

	Not at all	Poorly	Adequately	Well	Very well	NA	Total
H2	3%	12%	27%	34%	23%	1%	86

**H3: In working with HC individuals or groups, how would you rate the effectiveness of your specific HIV/AIDS activities? (Including the "Don't Know" responses)**

	Seldom effective	Sometimes effective	Often effective	Almost always effective	Don't know	Total
H3	1%	17%	44%	21%	16%	86

**H3: In working with HC individuals or groups, how would you rate the effectiveness of your specific HIV/AIDS activities? (Excluding the "Don't Know" responses)**

	Seldom effective	Sometimes effective	Often effective	Almost always effective	Total
H3	1%	21%	53%	25%	72

## I. Your Life in the Peace Corps

*This section reports on Volunteers' descriptions of and adjustments to their living conditions, including stress factors and how Volunteers cope with stress.*

### I1: Have you lived with a host country individual or family?

	No, I have never lived with a host country individual or family	Yes, I lived with a host country individual or family only	Yes, in my community (not during PST).	Yes, both during PST and later in my community.	Total
I1	1%	3%	7%	90%	152

### I2: How often do you interact with HCNs in community/family social events?

	Daily	Several times a week	Weekly	Several times a month	Monthly	Less than once a month	Total
I2	57%	19%	9%	11%	3%	1%	152

### I3: How well can you communicate in the language used by most people in your community?

	Not at all	Poorly	Adequately	Well	Very well	Total
I3		1%	24%	29%	45%	152

### I4: Do you have the following at your worksite?

	Never	Sometimes or more often	Total
Electricity	7%	93%	151
Running water	23%	77%	150

**I4: Do you have the following at your residence?**

	Never	Sometimes or more often	Total
Electricity	6%	94%	147
Running water	21%	79%	146

**I5: How well do your PC experiences match the expectations you had before you became a Volunteer?**

	Not at all	Minimally	Moderately	Considerably	Exceptionally	Total
I5	2%	16%	41%	33%	8%	152

**I7: To what extent do the following create stress and/or emotional health issues for you?**

	Not at all stressful 1	2	3	4	Exceptionally stressful 5	NA	Total
Cultural issues	5%	22%	36%	27%	11%		152
Dealing with violence in country (e.g., civil unrest, domestic violence, corporal punishment)	22%	30%	23%	14%	6%	5%	152
Health/medical problems	20%	28%	26%	18%	7%	2%	152
Issues including family, friends, loved ones in U.S.	15%	31%	30%	19%	5%		151
Isolation/loneliness	12%	22%	35%	19%	11%	1%	151
Local language	22%	30%	28%	14%	5%		152
Primary assignment	7%	17%	38%	28%	10%	1%	152
Romantic relationships in-country	19%	29%	22%	11%	3%	16%	152
Interactions with other Volunteers	47%	36%	12%	5%			152
Interactions with PC Staff	38%	36%	17%	9%	1%		152
Safety and security	28%	40%	22%	8%	2%		152
Other: Please specify below	3%		9%	18%	12%	59%	34

**18: Please mark all of the typical ways in which you cope with stress.**

		PCV Responses	% Using This Stress Reducer	Total PCVs Responding
\$18LessStress	Talk with PCVs outside my community	139	92%	
	Talk with friends and family in US	134	89%	
	Pursue personal hobbies	123	81%	
	Leave the community for a time	121	80%	
	Do sports	104	69%	
	Get involved in other projects	89	59%	
	Talk with co-workers or friends (not PCVs)	76	50%	
	Talk with my host family	61	40%	
	Talk with PC in-country staff	48	32%	
	Pray	35	23%	
	Meditate	29	19%	
	Do other activity (specify)	20	13%	
	Talk with PCVs in my community	19	13%	
	Talk with Office of Special Services staff			
	Total			151

\*Percents total to more than 100% since Volunteers were asked to "mark all that apply."



**I8: Others I talk with to reduce stress**

	Percent	Number
I8.OTHR.TEXT	Open-ended results. Not responsive to request.	
Total	100%	152

**I8: When asked about ways of coping with stress, Volunteers  
who answered "No stress"**

	No	Yes, I have no stress	Total
I8.NOSTRESS	100%		152

### 18: Other activities to reduce stress

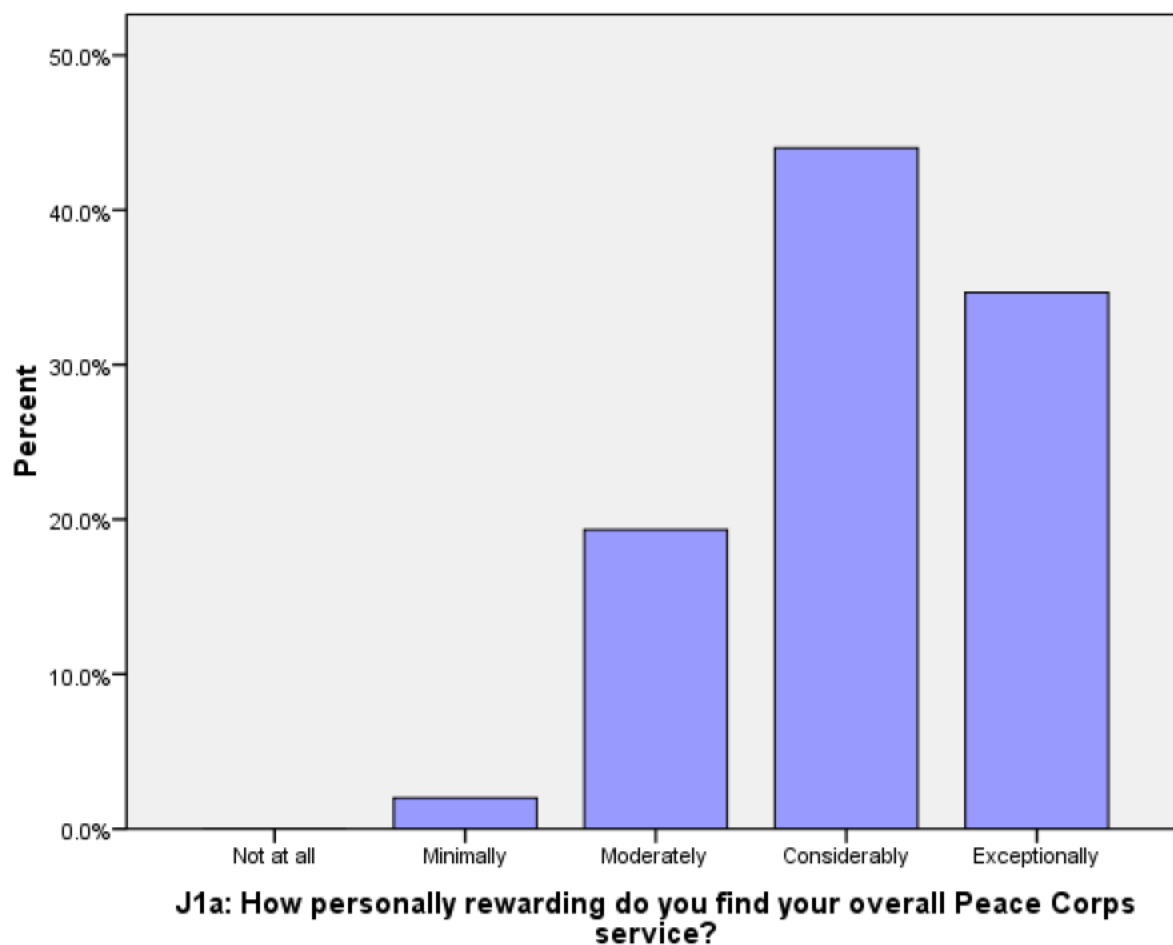
	Percent	Number
18.OTHRACT.TEXT2	Open-ended results. Not responsive to request.	
Total	100%	152

## J. Overall Assessment of Peace Corps Service

*This section reports Volunteers' level of satisfaction with their Peace Corps service and their expectations about completing their service.*

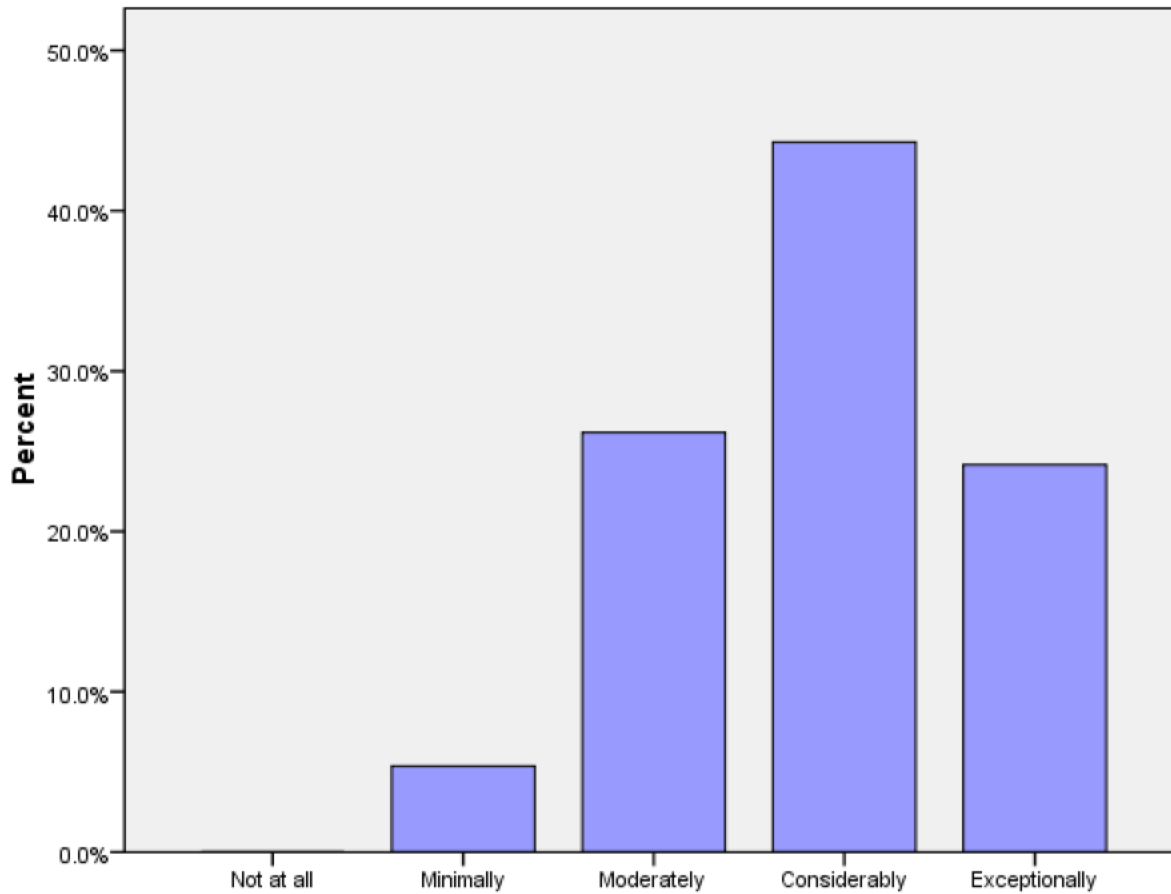
**J1a: How personally rewarding do you find your overall Peace Corps service?**

	Not at all	Minimally	Moderately	Considerably	Exceptionally	Total
J1A		2%	19%	44%	35%	150



**J1b: How personally rewarding do you find your community involvement?**

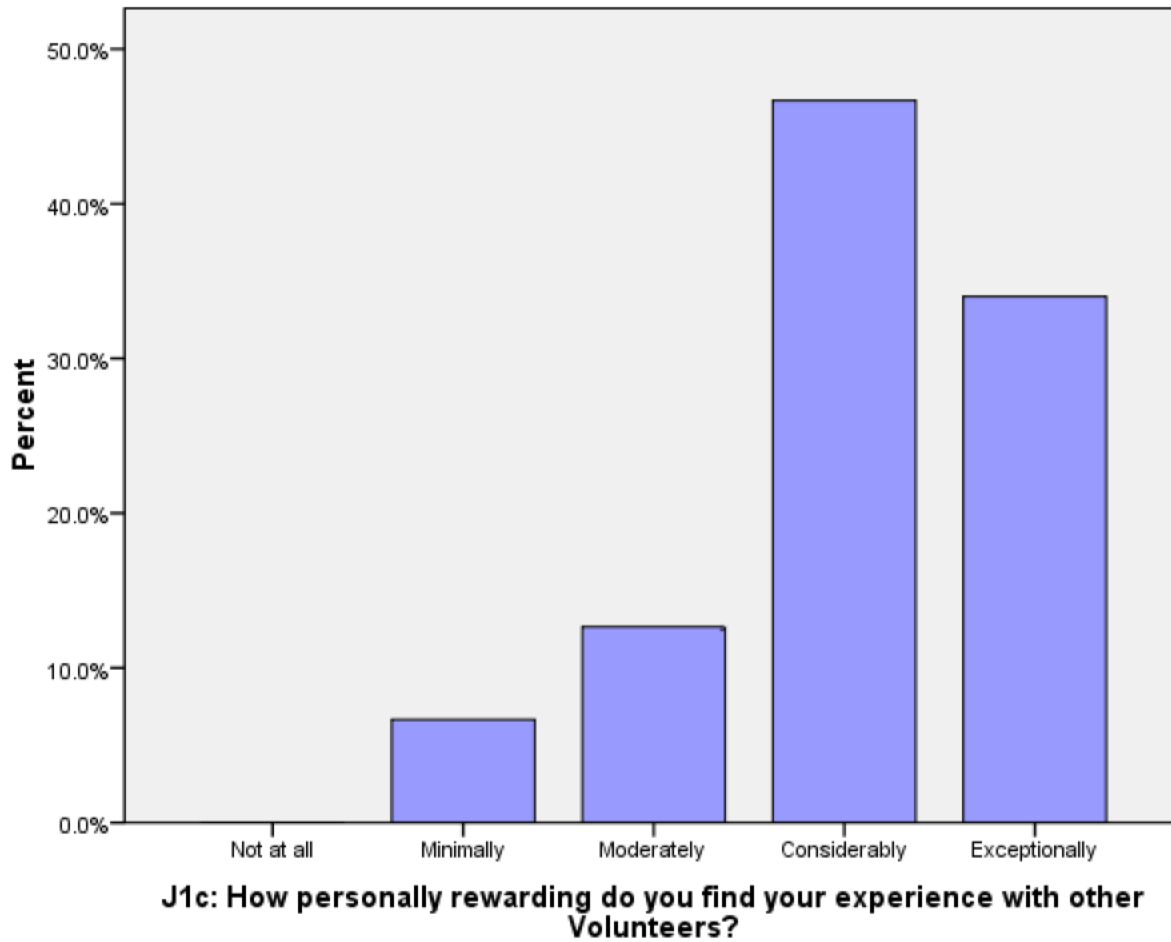
	Not at all	Minimally	Moderately	Considerably	Exceptionally	Total
J1B		5%	26%	44%	24%	149



**J1b: How personally rewarding do you find your community involvement?**

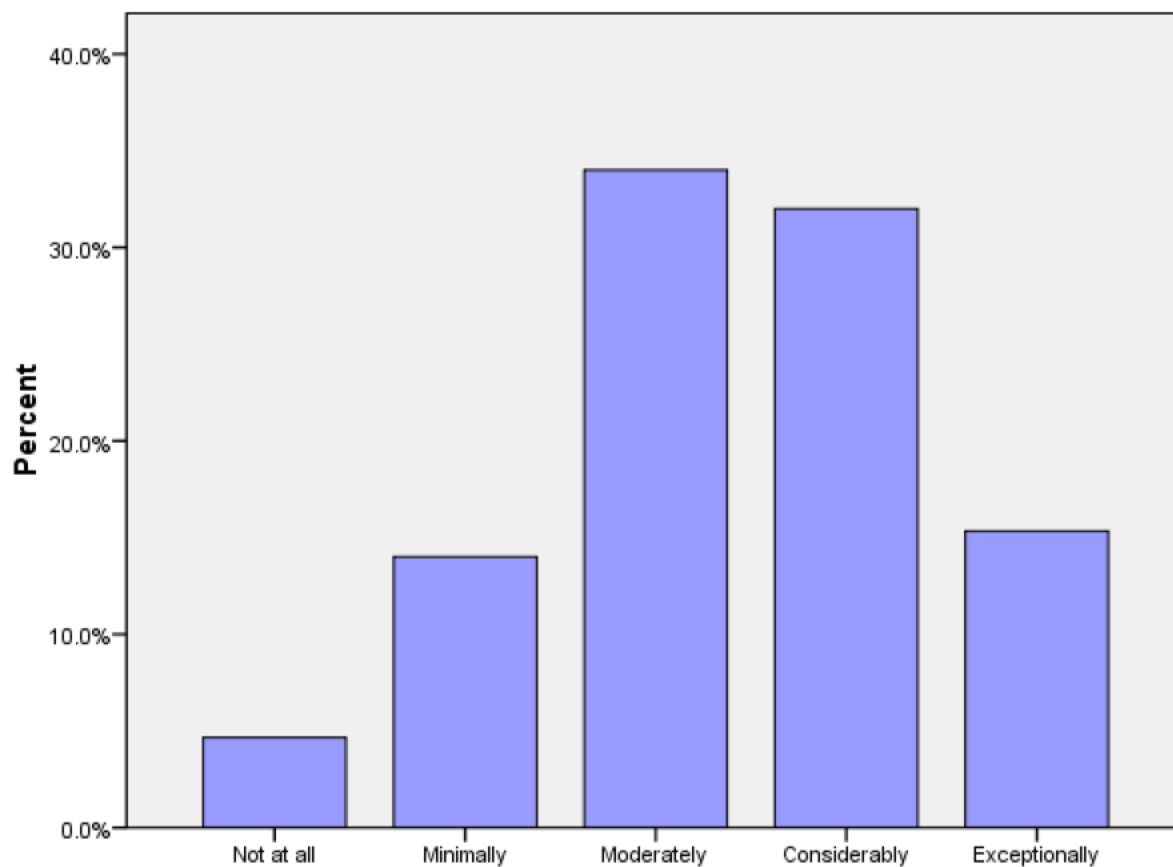
**J1c: How personally rewarding do you find your experience with other Volunteers?**

	Not at all	Minimally	Moderately	Considerably	Exceptionally	Total
J1C		7%	13%	47%	34%	150



**J1d: How personally rewarding do you find your work with counterparts/community partners?**

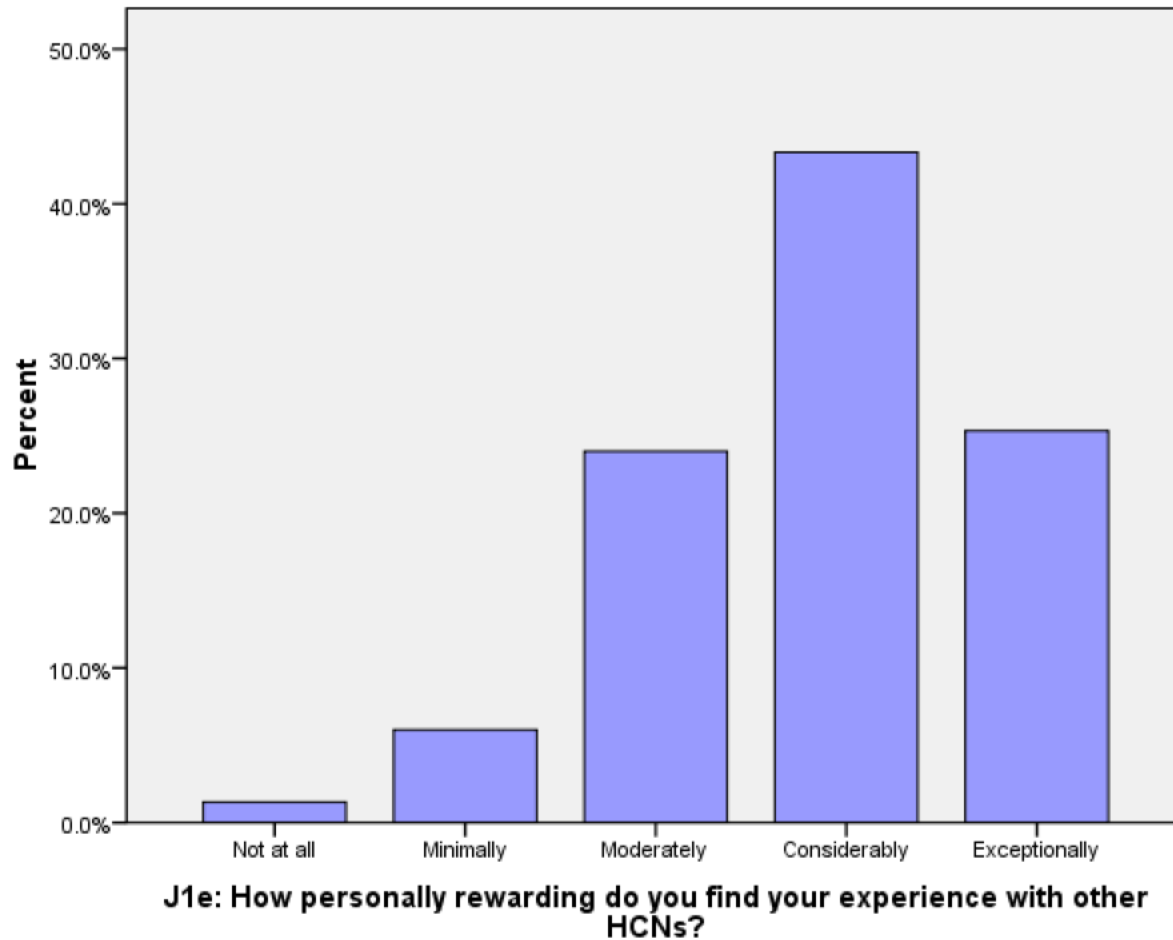
	Not at all	Minimally	Moderately	Considerably	Exceptionally	Total
J1D	5%	14%	34%	32%	15%	150



**J1d: How personally rewarding do you find your work with counterparts/community partners?**

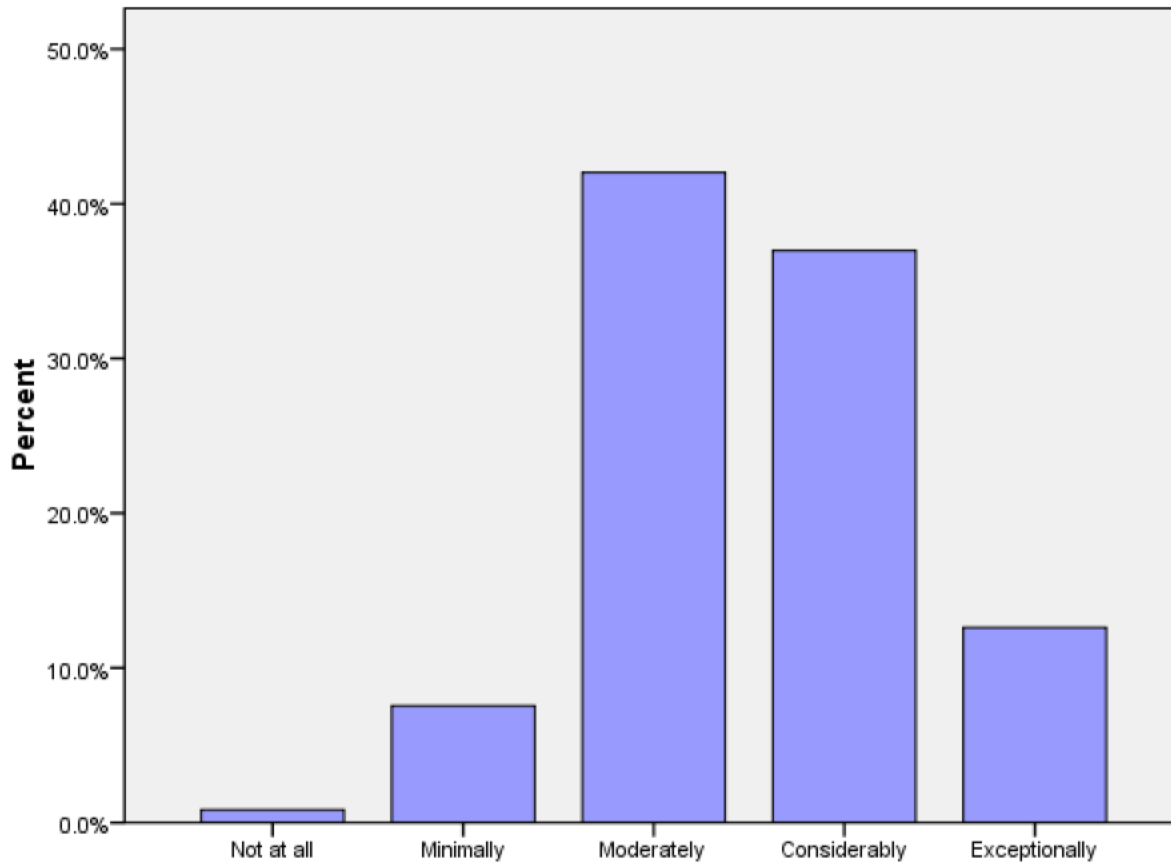
**J1e: How personally rewarding do you find your experience with other HCNs?**

	Not at all	Minimally	Moderately	Considerably	Exceptionally	Total
J1E	1%	6%	24%	43%	25%	150



**PCVs at post 9 months+ months: Please rate how well you think you achieved Goal 1.**

	Not at all	Minimally	Moderately	Considerably	Exceptionally	Total
J2A	1%	8%	42%	37%	13%	119

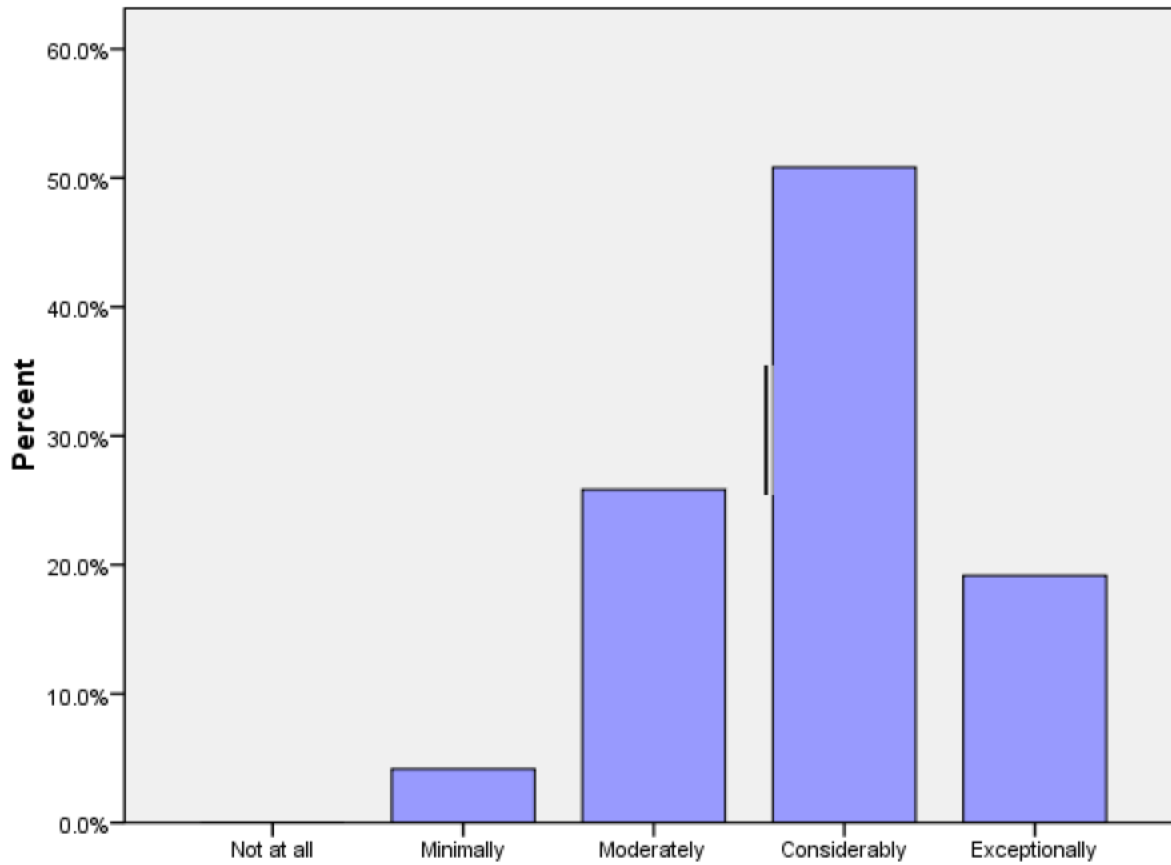


**PCVs at post 9 months+ months: Rate how well you think you achieved Goal 1.**



**PCVs at post 9 months+ months: Please rate how well you think you achieved Goal 2.**

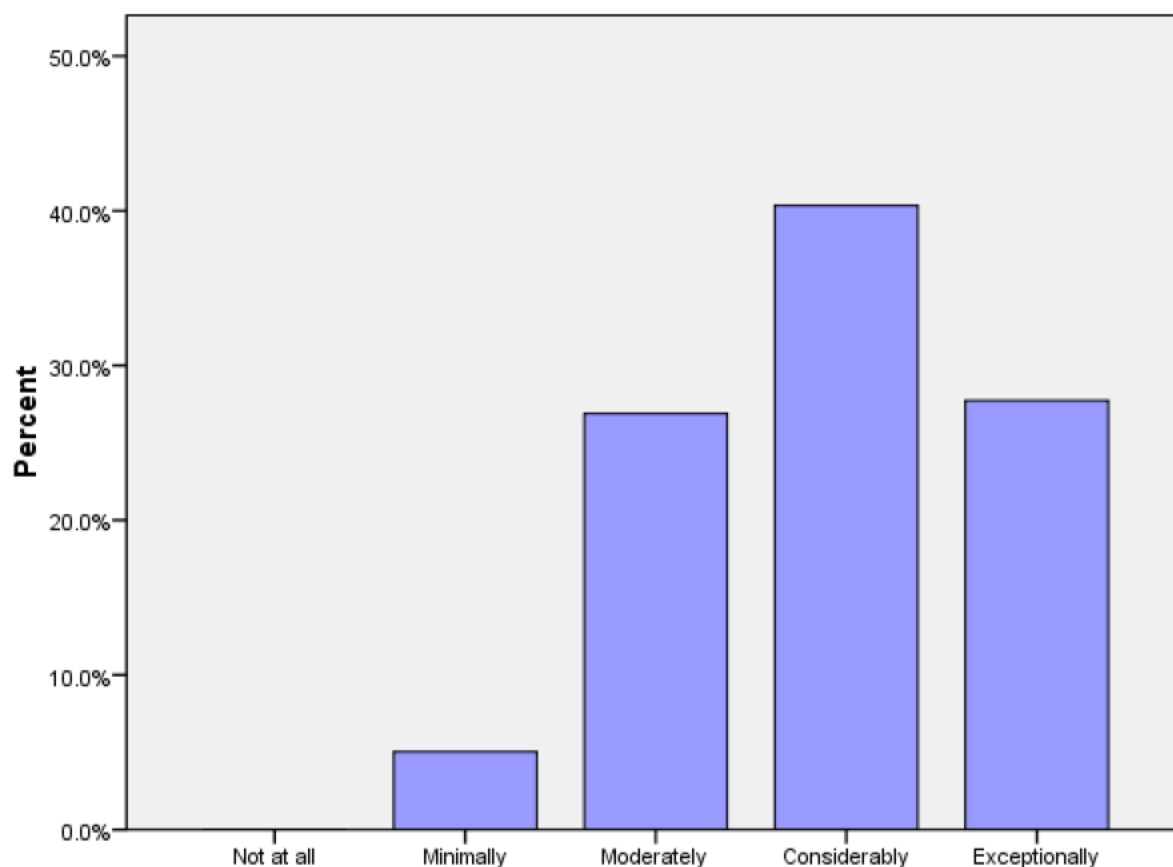
	Not at all	Minimally	Moderately	Considerably	Exceptionally	Total
J2B		4%	26%	51%	19%	120



**PCVs at post 9 months+ months: Rate how well you think you achieved Goal 2.**

**PCVs at post 9 months+ months: Please rate how well you think you achieved Goal 3.**

	Not at all	Minimally	Moderately	Considerably	Exceptionally	Total
J2C		5%	27%	40%	28%	119



**PCVs at post 9 months+ months: Please rate how well you think you achieved Goal 3.**

**J3: Today, would you make the same decision to join the Peace Corps?**

	No	Not likely	Possibly	Probably	Definitely	Total
J3		1%	2%	24%	73%	149

**J4: Would you recommend Peace Corps service to others you think are qualified?**

	No	Not likely	Possibly	Probably	Definitely	Total
J4		1%	1%	19%	79%	150

**J5: Do you intend to complete your Peace Corps service?**

	No	Not sure	Yes	Might extend	Total
J5		2%	69%	29%	150

**J6: Would your host country benefit most if the Peace Corps program was---?**

	Discontinued	Reduced	Refocused/redesigned	Maintained as is	Expanded	Total
J6		5%	39%	35%	22%	148

## **K. Activities After Peace Corps Service**

*This section reports on Volunteers' plans after they have completed their Peace Corps Service.*

**K1a: What are your plans after your Peace Corps service? Work in government.**

Government			
In the U.S.	In your host country	In another country	N
89%	11%	11%	19

\* Percent of cases was used. Percentages will be greater than 100 since Volunteers were asked to select all that applied.

**K1b: What are your plans after your Peace Corps service? Work in the private sector.**

Private Sector			
In the U.S.	In your host country	In another country	N
90%	20%	20%	20

\* Percent of cases was used. Percentages will be greater than 100 since Volunteers were asked to select all that applied.

**K1c: What are your plans after your Peace Corps service? Work for an NGO.**

NGO			
In the U.S.	In your host country	In another country	N
78%	22%	22%	18

\* Percent of cases was used. Percentages will be greater than 100 since Volunteers were asked to select all that applied.

**K1d: What are your plans after your Peace Corps service? Work for PC****Response.**

Peace Corps Response			
In the U.S.	In your host country	In another country	N
80%	20%	40%	5

\* Percent of cases was used. Percentages will be greater than 100 since Volunteers were asked to select all that applied.

**K1e: What are your plans after your Peace Corps service? Continue to participate in volunteer activities.**

Volunteer Activities			
In the U.S.	In your host country	In another country	N
86%	18%	18%	22

\* Percent of cases was used. Percentages will be greater than 100 since Volunteers were asked to select all that applied.

**K1f: What are your plans after your Peace Corps service? Graduate school/academic credentialing.**

Graduate School			
In the U.S.	In your host country	In another country	N
94%	3%	6%	34

\* Percent of cases was used. Percentages will be greater than 100 since Volunteers were asked to select all that applied.

**K1g: What are your plans after your Peace Corps service? Travel.**

Travel			
In the U.S.	In your host country	In another country	N
46%	4%	68%	28

\* Percent of cases was used. Percentages will be greater than 100 since Volunteers were asked to select all that applied.

**K1h: What are your plans after your Peace Corps service? Other.**

Other			
In the U.S.	In your host country	In another country	N
100%	0%	50%	2

\* Percent of cases was used. Percentages will be greater than 100 since Volunteers were asked to select all that applied.

**K2: How prepared do you feel to share your Peace Corps experience and knowledge of your host country with others in the United States when you return?**

	Not at all	Minimally	Moderately	Considerably	Total
How prepared do you feel to share your Peace Corps experience and knowledge of your host country with others in the United States when you return?	0%	2%	25%	73%	48

**K3: How well do you feel Peace Corps has prepared you for life in the U. S. after you return?**

	Not at all	Minimally	Moderately	Considerably	Exceptionally	Total
How well do you feel Peace Corps has prepared you for life in the U. S. after your return?	4%	17%	42%	25%	12%	48

**K6: Have your life/career goals changed because of your Peace Corps service?**

	No	Yes	Total
Have your life/career goals changed because of your Peace Corps service?	33%	67%	45

**K7: How well informed are you about the following opportunities for returned Volunteers:**

	Not informed	Somewhat informed	Well informed	N
Peace Corps Response	54%	40%	6%	48
Peace Corps' Fellows/USA program	9%	64%	28%	47
Noncompetitive eligibility	12%	67%	21%	48
RPCV Career Center in Washington, D.C.	63%	33%	4%	46
Returned Volunteer Services	62%	34%	4%	47

**K8: How did you first learn about the Fellows/USA program?**

Learn about Fellows/USA program	PC Website	62%	
	Word of mouth	29%	
	From a recruiter	21%	
	University website	12%	
	At PST	5%	
	From staff in the host country's PC office	5%	
	Other	5%	
	Hotline	2%	
	At COS Conference	2%	
	At IST	0%	
	Mid-service mailing from PC	0%	
	At post's information resource center	0%	
	N		42

\* Percent of cases was used. Percentages will be greater than 100 since Volunteers were asked to select all that applied.

**K9: Which of the following resources do you think will be helpful as you exit**

**Peace Corps service?**

K9 Resources	Career Resource Manual	69%	
	Access to free job bulletins	69%	
	Applying to federal government with RPCV noncompetitive eligibility	60%	
	Electronic newsletter with job postings and career advice	58%	
	RPCV Handbook	52%	
	RPCV career conferences	52%	
	RPCV job search webinars	50%	
	List of RPCVs willing to talk to me about their careers	48%	
	Connection with RPCVs through a mentoring program	46%	
	Guide to speaking about my PC service to others (third goal)	35%	
	Self-assessment software (SIGI 3)	25%	
	NOT SURE	15%	
	Other	2%	
	N		48

\* Percent of cases was used. Percentages will be greater than 100 since Volunteers were asked to select all that applied.



**K10: Which of the following third goal (helping promote a better understanding of peoples on the part of Americans) activities do you plan to do when you return to the U. S.?**

K10 Third Goal	Continue with volunteerism and service learning	85%	
	Join a RPCV group	73%	
	Speak to school age children about my experience	56%	
	Speak to a group of adults about my experience	42%	
	Write stories from my PC service on my own	31%	
	Participate in PC Week	29%	
	NOT SURE	15%	
	Obtain and use PC third goal resources	6%	
	Write stories from my PC service in conjunction with CWWS	4%	
	Other	2%	
	N		48

\* Percent of cases was used. Percentages will be greater than 100 since Volunteers were asked to select all that applied.