



**Peace Corps Volunteer
2009 Annual Volunteer Survey**

**Guatemala
October 4, 2009**

Office of Strategic Information, Research and Planning

Table of Contents

Introduction to the 2009 Annual Volunteer Survey Report	3
Overview of the Post's 2009 Volunteer Survey Respondents.....	4
A. Applying to the Peace Corps.....	7
B. Preparation for the Peace Corps.....	9
C. Your Peace Corps Assignment	10
D. Training for Peace Corps Assignment	16
E. Volunteer Assignment Goals and Impact.....	20
F. Peace Corps Support.....	28
G. Your Safety and Security	35
H. Volunteers working in HIV/AIDS.....	44
I. Your Life in the Peace Corps	45
J. Overall Assessment of Peace Corps Service	50
K. Activities After Peace Corps Service.....	59

Introduction to the 2009 Annual Volunteer Survey Report

This country report contains the tables and charts from the Volunteers in your country who completed the 2009 Annual Volunteer Survey (AVS). The results provide a picture of the activities, experiences and views of Peace Corps Volunteers in 2009. The results show areas where Volunteers' needs are met and identify areas where improvements may be needed. The survey was fielded from May through August 2009.

A core set of questions was asked of all Volunteers. For the first time, Volunteers were also asked a series of questions relevant to their time in country:

- Volunteers in country 8 or less months were asked about applying to and preparing for the Peace Corps.
- Volunteers in country 18 or less months were asked about the effectiveness of their pre-service training (PST).
- Volunteers in country 19 or more months were asked about their post-service plans, as well as the Peace Corps' resources for their post-service transition.

Tables and graphs are labeled by survey section and the survey question. The tables show the percent of post respondents that selected each choice and the total number of post respondents that answered the question. The number of responses for each question will vary, depending on:

- whether the question was asked of all Volunteers or only the Volunteers in-country a certain number of months and
- how many of the Volunteers who were "eligible" to answer the question did respond.

Most survey questions asked respondents to select only one from a set of choices. The percentages for the "select one" responses add up to 100 percent. Other questions asked Volunteers to "mark all that apply" in situations, for example, where it is likely that respondents are involved in more than one secondary activity. The percentages of the "mark all that apply" responses will total more than 100 percent; each percentage equals the number of respondents selecting that choice divided by the number of respondents who answered the question.

Posts are encouraged to compare these 2009 results with the 2006 and 2008 survey results to note trends and changes over time. Because questions are revised from one survey to the next, a crosswalk between the 2008 and 2009 questions is posted on the OSIRP intranet page under 2009 AVS Reports "Reference Documents." The earlier 2008 survey global, regional and post reports are also posted on the OSIRP Intranet page.

Volunteers' extensive narrative responses to the 29 open-ended questions on the survey are in the post's 2009 Annual Volunteer Survey Open Ended Responses report. All Volunteers' narrative responses to key questions will be analyzed for global themes and presented in a later report.

The number of surveys for each post includes surveys submitted online by Volunteers and completed paper surveys sent to the Peace Corps headquarters for hand-entry into the online survey system. The final count may include mostly completed partial surveys added to the final dataset after the survey closed.

Overview of the Post's 2009 Volunteer Survey Respondents

This overview presents basic information about the characteristics of Volunteers who completed the 2009 Annual Volunteer Survey at post.

Completed Surveys by Months in Country

	8 months or less		9 to 18 months		19 months or more		Total	
	Number	Percent	Number	Percent	Number	Percent	Number	Percent
Months3grp	30	25%	48	40%	43	36%	121	100%

L1: What is your age?

	20-29	30-49	50+	Total
AGE3grp	92%	8%	0%	120

L2: What is your gender?

	Female	Male	Total
GENDER	65%	35%	118

Completed surveys by project.

	Count	Column N %
Appropriate Technology for Family Health	9	7%
Healthy Schools	25	21%
Integrated Youth Development	12	10%
Municipal Development	17	14%
Sustainable Agriculture	24	20%
Sustainable Community	24	20%
Tourism		
Other. Please specify	10	8%
Total	121	100%

C2: Which best describes the focus of your primary assignment/work?

	Percent	Number
C2 Health extension	19%	21
Business education/advising	12%	13
Agriculture/fish/livestock	12%	13
Youth development	10%	11
Teacher training	9%	10
Urban & regional planning/municipal development	8%	9
Environmental education	8%	9
Community development	7%	8
Other: Please specify	6%	7
Forestry/parks	4%	5
Water sanitation	2%	2
Information & communications technology (ICT)	2%	2
NGO development	2%	2
Other education	1%	1
HIV/AIDS		
Math/science teaching		
English teaching		
Agroforestry		
Total	100%	113

C2.TEXT: Which of the following initiatives does your primary work include? Other (specify)

	PERCENT	NUMBER
C2.TEXT	Open-ended results. Not responsive to request.	
Total	100%	121

A. Applying to the Peace Corps

This section reports Volunteers' motivations in applying and accepting a Peace Corps assignment.

A1: How important were the following factors in accepting a PC assignment?

	Not Important	Somewhat important	Important	NA	Total
Different culture	4%	7%	89%		28
Work experience	7%	32%	61%		28
Help others	4%	4%	93%		28
International experience	4%	7%	89%		28
Language	4%	19%	78%		27
Personal growth		21%	79%		28
U. S. job market	57%	29%	14%		28
Serve my country	46%	43%	11%		28
Travel/adventure	4%	29%	68%		28
Other: Please specify below	15%			85%	13

A1_OTHER: How important were the following factors in accepting a PC assignment? Other (specify)

	PERCENT	NUMBER
A1_OTHER	100%	121
Total	100%	121

A2. What prompted you to apply to the PC? Mark all that apply.

	PCV Responses	% Involved in Initiative	Total PCVs Responding
What prompted you to apply to PC			
Personal interest in the Peace Corps	21	75%	
Returned Peace Corps Volunteer (e.g., someone you met or know personally)	15	54%	
Peace Corps campus or community information session	11	39%	
Peace Corps website	11	39%	
Peace Corps recruiter	6	21%	
Other: Please specify	5	18%	
Returned Peace Corps Volunteer who spoke to your school or group about the Peace Corps	4	14%	
Article or book about the Peace Corps	2	7%	
Radio, TV, or print advertisement	2	7%	
Peace Corps material in the mail			
Total			28

Percents may total to more than 100% since Volunteers were asked to "Mark all that apply."

A2.OTHER.TEXT: What prompted you to apply to the PC? Other (specify)

	PERCENT	NUMBER
A2.OTHER.TEXT		
Open-ended results. Not responsive to request.		
Total	100%	121

B. Preparation for the Peace Corps

This section reports on Volunteers' assessment of the materials and information available before their service.

B1: How useful was the information on the PC website in preparing you for the realities of living and working as a Volunteer?

	Not at all 1	2	3	4	Extremely 5	Don't know (did not access information)	Total
B1	4%	33%	52%	7%		4%	27

B2: How useful were the PC materials about your country in helping you prepare for your service?

	Not at all 1	2	3	4	Extremely 5	Don't know (did not access information)	Total
B2	4%	18%	39%	39%			28

B3: How useful were the materials you received from the PC about your primary assignment in helping you prepare for your service?

	Not at all 1	2	3	4	Extremely 5	Don't know (did not access information)	Total
B3	4%	14%	36%	43%	4%		28

B4: How useful were the materials you received from the PC regarding the need for flexibility in adapting to your work?

	Not at all 1	2	3	4	Extremely 5	Don't know (did not access information)	Total
B4		15%	41%	44%			27

B7: How prepared do you feel to meet the challenges of PC service?

	Not at all 1	2	3	4	Exceptionally 5	Total
B7		4%	18%	71%	7%	28

C. Your Peace Corps Assignment

This section reports Volunteers' primary assignment work and secondary activities. The term "primary assignment" refers to the Volunteers' assignment which is part of an overall project plan designed by your host country partners and in-country Peace Corps staff.

C3: Which of the following activities does your primary assignment/work include? Mark all that apply.

	PCV Responses	% Involved in Initiative	Total PCVs Responding
\$C3PrmAct Nutrition education	58	48%	
Rural development	51	42%	
Working with youth	51	42%	
Environment work	44	37%	
Working with NGO(s)	39	32%	
Income generation	36	30%	
Water and sanitation	36	30%	
Business advertising	31	26%	
Natural resources management	29	24%	
Child survival	25	21%	
Girls' education	25	21%	
Household food security	24	20%	
HIV/AIDS	23	19%	
Biodiversity conservation	22	18%	
Urban development/municipal development	22	18%	
Community food security (production/marketing)	18	15%	
English teaching	16	13%	
Microenterprise development	15	12%	
Arts	13	11%	
Other: Please specify	10	8%	
WID/GAD	9	8%	

Working with special groups (e.g., disabled, elderly, ethnic minorities, orphans)	9	8%	
Information and communications technology (ICT)	8	7%	
Mobilize host country nationals (HCNs) to volunteer	8	7%	
Sports/fitness	7	6%	
World Wise Schools/ Correspondence Match	7	6%	
Library development	4	3%	
Literacy	2	2%	
Total			120

Percents may total to more than 100% since Volunteers were asked to "Mark all that apply."

**C3: Which of the following activities does your primary assignment/work include? Other
(specify)**

	Column N %	Count	Row N %
C3.OTHER.TEXT			
Open-ended results. Not responsive to request.			
Total		121	100%

C4: Hours Spent on Primary Assignment During Average Work Week

	None	1-10 hrs	11-20 hrs	21-30 hrs	31-40 hrs	More than 40 hrs	Total
C4Hrs6grp		5%	22%	39%	25%	9%	120

C4: How many hours do you spend on your primary assignment during an average work week?

	All Volunteers	Average	Lowest reported	Highest reported	Did not answer
C4	121	29.0	4	55	1

C5: Which of the following do your secondary activities (other than your primary assignment work) include? Mark all that apply.

		PCV Responses	% Involved in Initiative	Total PCVs Responding
\$C5SecAct	English teaching	74	70%	
	Working with youth	32	30%	
	Nutrition education	25	24%	
	World Wise Schools/ Correspondence Match	25	24%	
	Sports/fitness	21	20%	
	Environment work	20	19%	
	Working with NGO(s)	20	19%	
	Arts	18	17%	
	Girls' education	18	17%	
	HIV/AIDS	17	16%	
	Rural development	17	16%	
	Income generation	15	14%	
	Literacy	14	13%	
	WID/GAD	13	12%	
	Water and sanitation	12	11%	

Community food security (production/marketing)	10	9%
Library development	10	9%
Other: Please specify	10	9%
Household food security	9	8%
Information and communications technology (ICT)	9	8%
Natural resources management	8	8%
Working with special groups (e.g., disabled, elderly, ethnic minorities, orphans)	7	7%
Biodiversity conservation	6	6%
Business advertising	6	6%
Urban development/municipal development	6	6%
Microenterprise development	4	4%
Mobilize host country nationals (HCNs) to volunteer	4	4%
Child survival	1	1%
Total		106

Percents may total to more than 100% since Volunteers were asked to "Mark all that apply."

C5: Which of the following do your secondary activities include? Other (specify)

	Column N %	Count	Row N %
C5.OTHER.TEXT	Open-ended results. Not responsive to request.		
Total		121	100%

C5: No Secondary Activities

		Percent	Number
C5.NONE	No	88%	106
	Yes	12%	15
	Total	100%	121

C6: Hours Spent on Secondary Activities During Average Work Week

	None	1-10 hrs	11-20 hrs	21-30 hrs	31-40 hrs	More than 40 hrs	Total
C6Hrs6grp		66%	23%	10%	1%		108

C6. How many hours do you spend on secondary activities during an average work week?

	All Volunteers	Average	Lowest reported	Highest reported	Did not answer
C6	121	11.2	1	35	13

C7: How personally satisfying is your--?

	Not at all 1	2	3	4	Exceptionally 5	Total
Primary assignment	1%	8%	27%	44%	20%	121
Secondary project/activities	1%	6%	23%	38%	32%	111

D. Training for Peace Corps Assignment

This section reports Volunteers' assessments of the effectiveness of their Pre-Service Training and In-Service Training at post. In-Service Training (IST) includes: Reconnect; Technical IST; Mid-Service and Close of Service conferences; project management/leadership conferences; and other post-sponsored training sessions.

D1: (PCVs at post 18 months or less) How effective was your Pre-Service Training (PST) in preparing you to--

	Not effective	Poor	Adequate	Effective	Very Effective	NA/No training	Total
Manage cultural differences			21%	38%	41%		78
Deal with adjustment issues		3%	24%	51%	22%		78
Work with counterparts/community partners	3%	14%	44%	31%	9%		78
Use language needed in work and social interactions	4%	8%	19%	40%	26%	4%	78
Perform technical aspects of your work	1%	13%	35%	35%	15%	1%	78
Work on your project goals and objectives		6%	33%	44%	15%	1%	78
Conduct a participatory community needs assessment (e.g., PACA)	4%	12%	39%	26%	14%	5%	77
Monitor your project goals and outcomes		10%	38%	43%	8%	1%	77
Maintain your physical health	3%	5%	17%	32%	41%	3%	78
Maintain your mental/emotional health		4%	27%	35%	33%	1%	78
Maintain your personal safety and security	1%		14%	40%	41%	4%	78

D5: How effective was your In-Service Training (IST) in preparing you to--

	Not effective	Poor	Adequate	Effective	Very Effective	NA/No training	Total
Manage cultural differences	1%	4%	28%	31%	20%	15%	99
Deal with adjustment issues	1%	2%	27%	38%	19%	13%	98
Build and strengthen working relationships with counterparts/community partners	1%	6%	33%	36%	16%	8%	98
Use language needed in work and social interactions	3%	7%	20%	33%	21%	15%	99
Perform technical aspects of your work	3%	6%	31%	33%	24%	2%	99
Work on your project goals and objectives		4%	31%	38%	24%	2%	99
Conduct a participatory community needs assessment (e.g.,PACA)	4%	3%	28%	22%	14%	28%	99
Monitor project goals and outcomes		3%	31%	38%	20%	7%	99
Maintain your physical health	2%	1%	17%	33%	27%	20%	96
Maintain your mental/emotional health	2%	1%	20%	35%	22%	19%	99
Maintain your personal safety and security	2%	3%	19%	28%	29%	20%	97

D8: Did you have this skill before joining the Peace Corps?

	No/ No answer	Yes	Total
Skills specific to my assignment	45	73	118
Assessing community needs	78	39	117
Organizing/implementing community activities	53	64	117
Building capacity of local organizations	94	21	115
Monitoring, reporting, and evaluating my work	35	83	118
Designing and implementing training sessions	73	45	118

D8: Is the skill needed for your Peace Corps work?

	No/ No answer	Yes	Total
Skills specific to my assignment	4	82	86
Assessing community needs	6	114	120
Organizing/implementing community activities	10	109	119
Building capacity of local organizations	15	103	118
Monitoring, reporting, and evaluating my work	3	117	120
Designing and implementing training sessions	4	116	120

D8: Have you had adequate Peace Corps training to acquire the skill?

	No/ No answer	Yes	Total
Skills specific to my assignment	19	86	105
Assessing community needs	11	104	115
Organizing/implementing community activities	27	83	110
Building capacity of local organizations	39	72	111
Monitoring, reporting, and evaluating my work	19	82	101
Designing and implementing training sessions	18	93	111

E. Volunteer Assignment Goals and Impact

This section reports Volunteers' self-assessments of their impact on the individuals and organizations in the communities in which they serve. At the end of this section, Volunteers' third goal activities, participation in Coverdell World Wise School/Correspondence Match (CWWS/CM) and use of Peace Corps resources to support their work are reported in questions.

E1: To what extent does your Volunteer work assignment address the following?

	Not at all 1	2	3	4	Exceptionally 5	NA	Total
Meets the objectives of the project plan	1%	3%	21%	40%	34%		119
Builds local capacity for sustainability	2%	10%	32%	39%	17%		120
Involves local people in planning and implementing activities	1%	4%	19%	38%	38%		120
Complements other local development activities	2%	8%	23%	42%	21%	3%	120
Transfers skills to host country individuals and organizations	2%	5%	23%	46%	24%		119
Mobilizes host country nationals (HCNs) to volunteer	14%	30%	22%	18%	12%	4%	119
Helps promote a better understanding of Americans on the part of the peoples served (goal 2)	1%	2%	21%	35%	41%		119
Helps promote a better understanding of other peoples on the part of Americans (goal 3)	2%	1%	18%	38%	42%	1%	120

E2: To what extent does your host community--?

	Not at all 1	2	3	4	Exceptionally 5	NA	Total
Need the assistance that you provided		10%	18%	42%	30%		40
Want the assistance that you provided	2%	20%	18%	32%	28%		40

E3: How much impact does your assignment have on the capacities of your host counterparts/community partners?

	None 1	2	3	4	Exceptional 5	NA	Total
Ability to access information (e.g., library, Internet, etc.)	15%	27%	27%	20%	8%	3%	119
Leadership skills	4%	18%	34%	34%	9%		120
Planning and management	3%	7%	33%	42%	15%		120
Problem solving/critical thinking	5%	13%	33%	38%	9%	1%	120
Self-esteem	5%	18%	24%	42%	9%	3%	118
Technical skills	5%	11%	33%	35%	16%		118
Use of local resources	2%	11%	39%	34%	13%	2%	119
Use of external resources (e.g., grants, international NGOs)	5%	17%	32%	29%	17%	1%	119
Better understanding of Americans		3%	17%	42%	38%		120
Other: Please specify below	3%		3%	10%	7%	77%	30

E3: How much impact does your assignment have on the capacities of your host counterparts/community partners? Other (specify)

	Column N %	Count	Row N %
E3_OTHER Open-ended results. Not responsive to request.			
Total		121	100%

E4: How much impact does your assignment have on the capacities of your host individuals with whom you work?

	None 1	2	3	4	Exceptional 5	NA	Total
Ability to access information (e.g., library, Internet, etc.)	13%	21%	34%	20%	7%	6%	116
Leadership skills	2%	15%	34%	35%	13%	2%	119
Planning and management	5%	14%	34%	33%	11%	3%	119
Problem solving/critical thinking	3%	13%	40%	32%	12%	1%	118
Self-esteem	2%	9%	28%	44%	16%	2%	119
Technical skills	6%	12%	33%	29%	15%	5%	119
Use of local resources	2%	17%	33%	32%	13%	2%	120
Use of external resources (e.g., grants, international NGOs)	12%	21%	28%	22%	9%	7%	120
Better understanding of Americans		3%	13%	35%	49%		118
Other: Please specify below			10%	10%	10%	70%	30

E4: How much impact does your assignment have on the capacities of your host individuals with whom you work? Other (specify)

	Column N %	Count	Row N %
E4_OTHER	Open-ended results. Not responsive to request.		
Total		121	100%

E5: To what extent does your assignment enhance the capacities of organizations with whom you work?

	None 1	2	3	4	Exceptional 5	NA	Total
Identifying and prioritizing organizational needs	6%	8%	32%	32%	18%	4%	120
Leadership	6%	12%	35%	27%	16%	5%	121
Management	7%	12%	32%	29%	13%	7%	121
Monitoring and evaluation	7%	14%	32%	31%	12%	4%	119
Planning and implementing organizational activities	5%	8%	27%	34%	22%	3%	119
Teamwork/participatory decision-making	4%	8%	24%	39%	21%	4%	120
Use of local resources	5%	11%	35%	29%	13%	7%	121
Ability to mobilize, manage, and sustain local volunteers	9%	18%	27%	24%	8%	13%	119
Other: Please specify below			12%	9%	6%	74%	34

E5: To what extent does your assignment enhance the capacities of organizations with whom you work? Other (specify)

	Column N %	Count	Row N %
E5_OTHER	Open-ended results. Not responsive to request.		
Total		121	100%

E6: How effective have you been in transferring knowledge and skills to help the following persons or groups build their capacities?

	Not at all 1	2	3	4	Exceptionally 5	NA	Total
Your counterpart/community partner	9%	12%	36%	29%	13%	1%	120
Another institution/organization	7%	12%	27%	38%	10%	8%	120
Members of your host community	1%	6%	28%	45%	19%	2%	121
Other: Please specify below			8%	8%	12%	72%	25

E7: To what extent have HC individuals gained a better understanding of Americans? Includes "Too early to tell."

	Not at all	Minimally	Moderately	Considerably	Exceptionally	Too early to tell	Total
E7	0%	1%	19%	58%	18%	4%	121

E7: To what extent have HC individuals gained a better understanding of Americans? Excludes "Too early to tell."

	Not at all	Minimally	Moderately	Considerably	Exceptionally	Total
E7		1%	20%	60%	19%	116

E9. In which of the following third goal activities have you participated during your PC service?

		PCV Responses	% Doing This	Total PCVs Responding
\$E9Goal3Acts	Electronic updates	111	92%	
	Hosting American visitors	102	85%	
	Personal website or blog	69	58%	
	Enrollment in the CWWS/CMS program	55	46%	
	Hard copy/paper update	42	35%	
	While on home leave, spoke at a school or community group	36	30%	
	Podcasted/created a slide show or video posted online	13	11%	
	Pen pal program/letter exchange	12	10%	
	Other please specify	5	4%	
	Peace Corps Week activities	4	3%	
Total				120

E9: When asked about third goal activities, Volunteer answered "No involvement in third goal activities."

	Have done third goal activities	No third goal activities	Total
Peace Corps' third goal is to "help promote a better understanding of other peoples on the part of Americans." In which of the following third goal activities, including your contact with family and friends, have you participated during your Peace Corps	99%	1%	121

E10: Would you recommend participation in the CWWS CMS to other Volunteers?

	I have not participated in CWWS/CM.	I have participated in CWWS/CM & would recommend it	I have participated in CWWS/CM and would NOT recommend it	Total
E10	52%	38%	10%	120

E11: To what extent have Americans gained a better understanding of HCNs? Includes "Too early to tell."

	Not at all	Minimally	Moderately	Considerably	Exceptionally	Too early to tell	Total
E11	0%	3%	19%	50%	26%	2%	121

E11: To what extent have Americans gained a better understanding of HCNs? Excludes "Too early to tell."

	Not at all	Minimally	Moderately	Considerably	Exceptionally	Total
E11		3%	19%	51%	26%	118

E12: Which of the following resources have been useful to you in your third goal activities?

	Yes
Coverdell World Wise Schools staff (Useful)	31
Contact with other Peace Corps staff in Washington, D.C. (Useful)	17
Information at staging (Useful)	44
Information from your post sent to you before departure (Useful)	61
Internet (Useful)	98
Invitation kits (Useful)	62
Material in staging packet (Useful)	51
Peace Corps staff at post (e.g., World Wise School contact) (Useful)	42
Recruiting (Useful)	31
Resources available from Coverdell World Wise Schools (Useful)	19
Resources available on Peace Corps website (e.g., third goal section) (Useful)	45
Training on third goal (Useful)	33
Other: Please specify below (Useful)	2

E12: Which of the following resources would/will be helpful to you in your third goal activities?

	Yes
Coverdell World Wise Schools staff (Would be helpful)	37
Contact with other Peace Corps staff in Washington, D.C. (Would be helpful)	40
Information at staging (Would be helpful)	20
Information from your post sent to you before departure (Would be helpful)	21
Internet (Would be helpful)	21
Invitation kits (Would be helpful)	16
Material in staging packet (Would be helpful)	12
Peace Corps staff at post (e.g., World Wise School contact) (Would be helpful)	18
Recruiting (Would be helpful)	23
Resources available from Coverdell World Wise Schools(Would be helpful)	27
Resources available on Peace Corps website (e.g., third goal section) (Would be helpful)	33
Training on third goal (Would be helpful)	32
Other: Please specify below (Would/will be helpful)	3

E12: Other useful/helpful resources? Other (specify)

	Column N %	Count	Row N %
E12_OTHER			
Open-ended results. Not responsive to request.			
Total		121	100%

E13: Do you know about the Peace Corps Partnership Program (PCPP)?

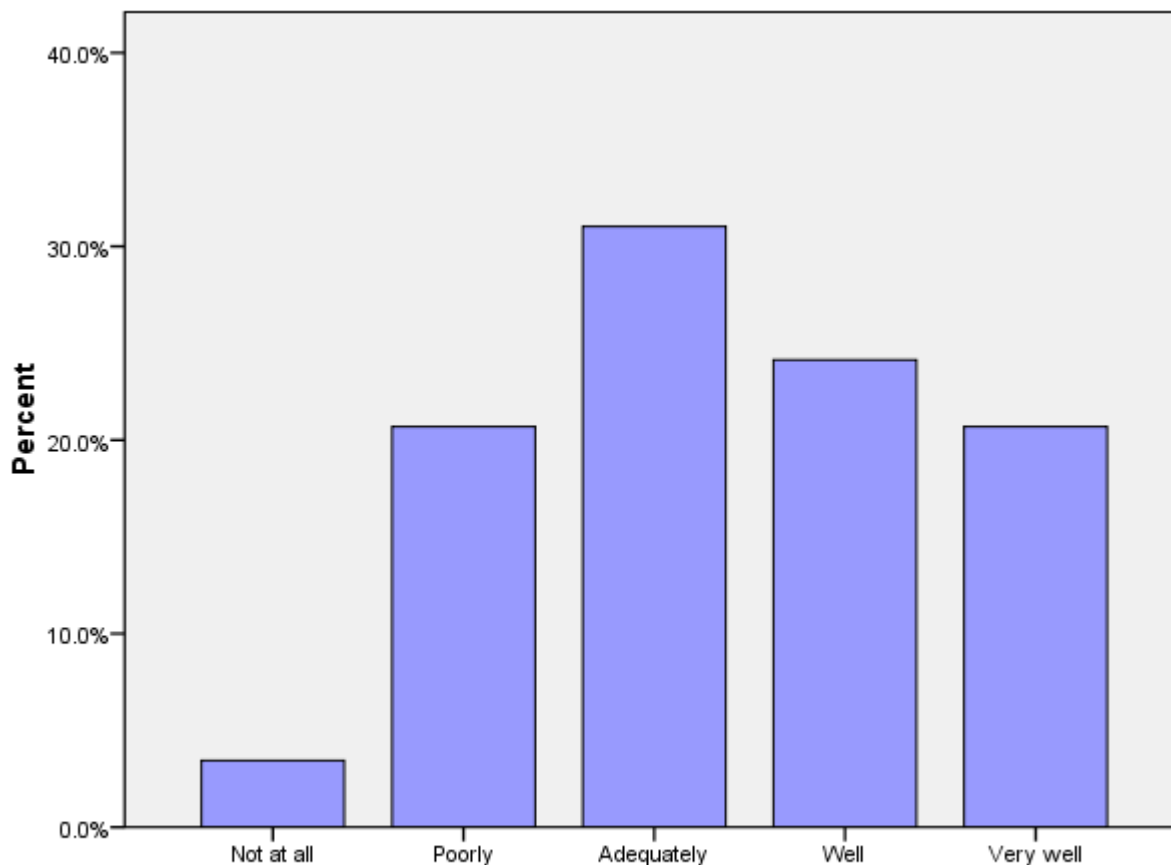
	No	Yes, but I haven't used it.	Yes, I have used it.	Total
E13	55%	44%	2%	121

F. Peace Corps Support

This section reports Volunteers' assessments of in-country Peace Corps.

F1 (PCVs at post 9+ months): How prepared for your arrival were the host people with whom you work?

	Not at all	Poorly	Adequately	Well	Very well	Total
F1	3%	21%	31%	24%	21%	29



F1: When you arrived at your community, how prepared for your arrival were the host people with whom you work?

F2: How satisfied are you with the health care you received from your PCMO(s)?

	Not at all	Minimally	Adequately	Considerably	Exceptionally	Not Used	Total
F2		2%	8%	27%	63%		118

F3: How satisfied are you with the following support provided by in-country PC staff?

	Not at all 1	2	3	4	Completely 5	NA	Total
Administrative/logistical	1%	8%	27%	37%	28%		120
Cross-cultural		4%	20%	39%	36%	1%	120
Emotional	3%	13%	26%	32%	24%	3%	119
Feedback on my work reports	12%	18%	28%	17%	17%	8%	117
Job assignment	2%	13%	22%	34%	28%		120
Language learning	5%	9%	21%	32%	30%	2%	120
Medical		1%	12%	29%	58%		120
Safety and security	2%	14%	16%	33%	34%		120
Site selection/preparation	1%	17%	21%	33%	28%		120
Technical skills	2%	14%	28%	35%	21%	1%	118

F4: How satisfied are you with the PC time and resources allocated to mental health/adjustment issues?

	Not at all satisfied 1	2	3	4	Completely satisfied 5	Total
F4	2%	14%	31%	27%	26%	120

F5: What level of PC support have you received to help cope with stress from issues such as HIV/AIDS, food insecurity, etc. in your community? (Including PCVs w/no need for support)

	No support	Minimal support	Adequate support	Considerable support	Exceptional support	NA / I have no need for support	Total
F5	1%	10%	18%	16%	5%	50%	119

F5: What level of PC support have you received to help cope with stress from issues such as HIV/AIDS, food insecurity, etc. in your community? (Excluding PCVs w/no need for support)

	No support	Minimal support	Adequate support	Considerable support	Exceptional support	Total
F5	2%	20%	37%	32%	10%	60

F6: How would you rate your interaction with the Country Director in terms of the following?

	Not adequate	Adequate	Total
Responsiveness to my issues	10%	90%	114
Informative content	5%	95%	111
My comfort level discussing issues	27%	73%	110
Adequacy of visits	32%	68%	110

F6: How would you rate your interaction with the PTO/SRPTC in terms of the following?

	Not adequate	Adequate	Total
Responsiveness to my issues	5%	95%	112
Informative content	6%	94%	109
My comfort level discussing issues	15%	85%	109
Adequacy of visits	21%	79%	107

F6: How would you rate your interaction with the APCD/Program Manager in terms of the following?

	Not adequate	Adequate	Total
Responsiveness to my issues	13%	87%	114
Informative content	11%	89%	109
My comfort level discussing issues	18%	82%	109
Adequacy of visits	12%	88%	115

F6: How would you rate your interaction with the PCMO in terms of the following?

	Not adequate	Adequate	Total
Responsiveness to my issues	6%	94%	112
Informative content	3%	97%	108
My comfort level discussing issues	7%	93%	105
Adequacy of visits	8%	92%	104

F6: How would you rate your interaction with the Safety and Security Coordinator in terms of the following?

	Not adequate	Adequate	Total
Responsiveness to my issues	20%	80%	116
Informative content	17%	83%	112
My comfort level discussing issues	36%	64%	112
Adequacy of visits	23%	77%	111

F6: How would you rate your interaction with the Training Manager in terms of the following?

	Not adequate	Adequate	Total
Responsiveness to my issues	0%	100%	115
Informative content	2%	98%	111
My comfort level discussing issues	4%	96%	110
Adequacy of visits	9%	91%	106

F6: How would you rate your interaction with administrative staff in terms of the following?

	Not adequate	Adequate	Total
Responsiveness to my issues	3%	97%	116
Informative content	9%	91%	109
My comfort level discussing issues	9%	91%	112
Adequacy of visits	9%	91%	109

F6: How would you rate your interaction with other post staff (please specify) in terms of the following?

	Not adequate	Adequate	Total
Responsiveness to my issues	0%	100%	13
Informative content	0%	100%	15
My comfort level discussing issues	0%	100%	12
Adequacy of visits	7%	93%	15

F7: To what extent is your CD aware of Volunteer issues and concerns through interactions with Volunteers?

	Not at all	Minimally	Adequately	Considerably	Completely	Total
F7	3%	12%	43%	30%	13%	111

F8: What is the most effective way you use to communicate with PC staff?

Most effective	Cellphone (voice)	58%	66
	Email/ Internet	23%	26
	In-person visits	10%	11
	Text messaging	6%	7
	Telephone at residence or work	4%	4
	Other. Please specify		
	Telephone not at residence or work		
	Letters		
	CB radio		
	Total	100%	114

F8: What is the second most effective way you use to communicate with PC staff?

Second most effective	Email/ Internet	57%	65
	Cellphone (voice)	31%	35
	Text messaging	4%	5
	In-person visits	4%	5
	Telephone at residence or work	3%	3
	Telephone not at residence or work	1%	1
	Other. Please specify		
	Letters		
	CB radio		
	Total	100%	114

F8: What is the third most effective way you use to communicate with PC staff?

(C11_THREE) Third most effective	In-person visits	47%	53
	Text messaging	23%	26
	Email/ Internet	18%	20
	Telephone at residence or work	6%	7
	Cellphone (voice)	5%	6
	Other. Please specify		
	Telephone not at residence or work		
	Letters		
	CB radio		
	Total	100%	112

F9: How do you rate the effectiveness of your communication resources for contacting in-country PC staff?

	Very poor	Poor	Adequate	Good	Excellent	Total
F9		1%	10%	37%	52%	121

G. Your Safety and Security

This section reports on how safe and informed about their safety Volunteers feel. Their experiences with reported and unreported crimes are summarized.

G1: How safe do you feel...?

	Not at All Safe	Often Safe	Adequately Safe	Usually Safe	Very Safe	Total
Where you live		3%	8%	26%	63%	120
Where you work		1%	12%	28%	60%	121
When you travel in-country	5%	17%	33%	39%	7%	119
City where main Peace Corps office is located	1%	8%	15%	34%	42%	120

G2: Please indicate the number of times you experienced the following types of discrimination/harassment.

	Never	Once	2-5 times	6-10 times	11-25 times	26+ times	Total
Age	93.3%	2.2%	2.2%	1.1%	1.1%		90
Anti-American	51.5%	21.2%	17.2%	5.1%	1.0%	4.0%	99
Disability	100.0%						89
Gender	59.6%	2.1%	14.9%	4.3%	4.3%	14.9%	94
Racial/color	83.5%	2.2%	4.4%	2.2%	3.3%	4.4%	91
Religious	92.1%	1.1%	4.5%	1.1%		1.1%	89
Sexual (verbal)	47.9%	9.4%	9.4%	4.2%	5.2%	24.0%	96
Sexual (physical)	80.2%	4.4%	13.2%	2.2%			91
Sexual orientation	94.4%	2.2%	2.2%	1.1%			89

G2: Please indicate the number of times you reported discrimination/harassment events to PC.

	Never	Once	2-5 times	6-10 times	11-25 times	26+ times	Total
Age	100.0%						6
Anti-American	93.5%	6.5%					46
Disability	100.0%						1
Gender	97.4%	2.6%					38
Racial/color	91.7%	8.3%					12
Religious	100.0%						7
Sexual (verbal)	91.1%	6.7%			2.2%		45
Sexual (physical)	83.3%	11.1%	5.6%				18
Sexual orientation	100.0%						5

G3: Please indicate the number of times you experienced the following types of crimes.

	Never	Once	2-5 times	6-10 times	11-25 times	26+ times	Total
Burglary	93.5%	4.3%	2.2%				92
Theft	45.1%	33.3%	20.6%	1.0%			102
Robbery	92.3%	5.5%	2.2%				91
Physical assault	95.6%	4.4%					91
Aggravated assault	100.0%						91
Sexual assault	90.0%	6.7%	3.3%				90
Rape	100.0%						88

G3: Please indicate the number of times you reported the following crimes to Peace Corps.

	Never	Once	2-5 times	6-10 times	11-25 times	26+ times	Total
Burglary	33.3%	50.0%	16.7%				6
Theft	25.5%	52.7%	21.8%				55
Robbery	62.5%	25.0%	12.5%				8
Physical assault	60.0%	40.0%					5
Aggravated assault	100.0%						1
Sexual assault	30.0%	50.0%	20.0%				10
Rape	100.0%						1

G4: If you did not report your experience with burglary, please your reason(s) for not reporting.

	PCV Responses	% Reason Not Rptd	Total PCVs Responding
\$NoRpBurg			
I felt it was too minor or common to report	2	100%	
I did not think the PC could help			
I believed it could result in changing sites			
Concerns of a possible breach in confidentiality			
Reporting might result in disciplinary action against me			
It might hurt my relationship with the community			
Other			
Total			2

*Percents may total to more than 100% since Volunteers were asked to "mark all that apply."

G4: If you did not report your experience with theft, please your reason(s) for not reporting.

		PCV Responses	% Reason Not Rptd	Total PCVs Responding
\$NoRpTheft	I felt it was too minor or common to report	16	73%	22
	I did not think the PC could help	9	41%	
	Other	4	18%	
	I believed it could result in changing sites	1	5%	
	Concerns of a possible breach in confidentiality	1	5%	
	Reporting might result in disciplinary action against me	1	5%	
	It might hurt my relationship with the community	1	5%	
	Total			

*Percents may total to more than 100% since Volunteers were asked to "mark all that apply."

G4: If you did not report your experience with robbery, please your reason(s) for not reporting.

		PCV Responses	% Reason Not Rptd	Total PCVs Responding
\$NoRpRobb	I did not think the PC could help	2	67%	
	Reporting might result in disciplinary action against me	2	67%	
	I believed it could result in changing sites			
	I felt it was too minor or common to report			
	Concerns of a possible breach in confidentiality			
	It might hurt my relationship with the community			
	Other			
	Total			

*Percents may total to more than 100% since Volunteers were asked to "mark all that apply."

G4: If you did not report your experience with physical assault, please your reason(s) for not reporting.

	PCV Responses	% Reason Not Rptd	Total PCVs Responding
\$NoRpPhAs	1	100%	
I felt it was too minor or common to report			
I did not think the PC could help			
I believed it could result in changing sites			
Concerns of a possible breach in confidentiality			
Reporting might result in disciplinary action against me			
It might hurt my relationship with the community			
Other			
Total			1

*Percents may total to more than 100% since Volunteers were asked to "mark all that apply."

G4: If you did not report your experience with aggravated assault, please your reason(s) for not reporting.

	PCV Responses	% Reason Not Rptd	Total PCVs Responding
\$NoRpAgAs			
I did not think the PC could help			
I believed it could result in changing sites			
I felt it was too minor or common to report			
Concerns of a possible breach in confidentiality			
Reporting might result in disciplinary action against me			
It might hurt my relationship with the community			
Other			
Total			

*Percents may total to more than 100% since Volunteers were asked to "mark all that apply."

G4: If you did not report your experience with sexual assault, please your reason(s) for not reporting.

		PCV Responses	% Reason Not Rptd	Total PCVs Responding
\$NoRpSxAs	I felt it was too minor or common to report	4	80%	5
	I did not think the PC could help	2	40%	
	Reporting might result in disciplinary action against me	1	20%	
	It might hurt my relationship with the community	1	20%	
	I believed it could result in changing sites			
	Concerns of a possible breach in confidentiality			
	Other			
	Total			

*Percents may total to more than 100% since Volunteers were asked to "mark all that apply."

G4: If you did not report your experience with rape, please your reason(s) for not reporting.

		PCV Responses	% Reason Not Rptd	Total PCVs Responding
\$NoRpRape	I did not think the PC could help			
	I believed it could result in changing sites			
	I felt it was too minor or common to report			
	Concerns of a possible breach in confidentiality			
	Reporting might result in disciplinary action against me			
	It might hurt my relationship with the community			
	Other			
	Total			

*Percents may total to more than 100% since Volunteers were asked to "mark all that apply."

H. Volunteers working in HIV/AIDS

This section reports Volunteers' involvement in HIV/AIDS and their perceived effectiveness of their HIV/AIDS related activities.

H1: Which of the following best describes your involvement in HIV/AIDS activities?

	HIV/AIDS work is my primary assignment.	HIV/AIDS work is part of my secondary activities.	Involved in HIV/AIDS efforts, not primary/secondary work	Not involved in any HIV/AIDS related activities	Total
H1	13%	18%	21%	48%	120

H2: How well has PC training prepared you to undertake your HIV/AIDS activities?

	Not at all	Poorly	Adequately	Well	Very well	NA	Total
H2	2%	5%	23%	26%	44%	2%	62

H3: In working with HC individuals or groups, how would you rate the effectiveness of your specific HIV/AIDS activities? (Including the "Don't Know" responses)

	Seldom effective	Sometimes effective	Often effective	Almost always effective	Don't know	Total
H3		20%	39%	34%	7%	61

H3: In working with HC individuals or groups, how would you rate the effectiveness of your specific HIV/AIDS activities? (Excluding the "Don't Know" responses)

	Seldom effective	Sometimes effective	Often effective	Almost always effective	Total
H3		21%	42%	37%	57

I. Your Life in the Peace Corps

This section reports on Volunteers' descriptions of and adjustments to their living conditions, including stress factors and how Volunteers cope with stress.

I1: Have you lived with a host country individual or family?

	No, I have never lived with a host country individual or f	Yes, I lived with a host country individual or family only	Yes, in my community (not during PST).	Yes, both during PST and later in my community.	Total
I1		12%	1%	87%	121

I2: How often do you interact with HCNs in community/family social events?

	Daily	Several times a week	Weekly	Several times a month	Monthly	Less than once a month	Total
I2	37%	24%	15%	12%	8%	3%	119

I3: How well can you communicate in the language used by most people in your community?

	Not at all	Poorly	Adequately	Well	Very well	Total
I3	3%	8%	18%	32%	38%	120

I4: Do you have the following at your worksite?

	Never	Sometimes or more often	Total
Electricity	3%	97%	118
Running water	6%	94%	118

I4: Do you have the following at your residence?

	Never	Sometimes or more often	Total
Electricity	1%	99%	116
Running water	5%	95%	116

I5: How well do your PC experiences match the expectations you had before you became a Volunteer?

	Not at all	Minimally	Moderately	Considerably	Exceptionally	Total
I5	4%	8%	28%	46%	13%	120

I7: To what extent do the following create stress and/or emotional health issues for you?

	Not at all stressful 1	2	3	4	Exceptionally stressful 5	NA	Total
Cultural issues	13%	26%	29%	27%	5%		118
Dealing with violence in country (e.g., civil unrest, domestic violence, corporal punishment)	16%	32%	30%	15%	6%	1%	120
Health/medical problems	19%	32%	29%	13%	6%	1%	120
Issues including family, friends, loved ones in U.S.	15%	31%	21%	23%	9%	1%	119
Isolation/loneliness	14%	33%	25%	18%	9%		118
Local language	23%	33%	23%	12%	9%		118
Primary assignment	13%	32%	28%	18%	8%		120
Romantic relationships in-country	39%	23%	11%	6%	5%	17%	119
Interactions with other Volunteers	52%	26%	16%	5%	2%		120
Interactions with PC Staff	41%	33%	19%	5%	2%		119
Safety and security	21%	35%	28%	13%	3%		118
Other: Please specify below	13%			7%	20%	60%	15

I8: Please mark all of the typical ways in which you cope with stress.

	PCV Responses	% Using This Stress Reducer	Total PCVs Responding
\$I8LessStress Talk with friends and family in US	106	91%	
Pursue personal hobbies	98	84%	
Talk with PCVs outside my community	94	80%	
Do sports	89	76%	
Leave the community for a time	85	73%	
Talk with PCVs in my community	67	57%	
Get involved in other projects	63	54%	
Talk with co-workers or friends (not PCVs)	53	45%	
Talk with my host family	46	39%	
Meditate	31	26%	
Talk with PC in-country staff	23	20%	
Pray	22	19%	
Do other activity (specify)	14	12%	
Talk with Office of Special Services staff	1	1%	
Total			

*Percents total to more than 100% since Volunteers were asked to "mark all that apply."

I8: Others I talk with to reduce stress

	Percent	Number
I8.OTHR.S.TEXT	Open-ended results. Not responsive to request.	
Total	100%	121

I8: Other activities to reduce stress

	Percent	Number
I8.OTHRACT.TEXT2	Open-ended results. Not responsive to request.	
Total	100%	121

I8: When asked about ways of coping with stress, Volunteers who answered "No stress"

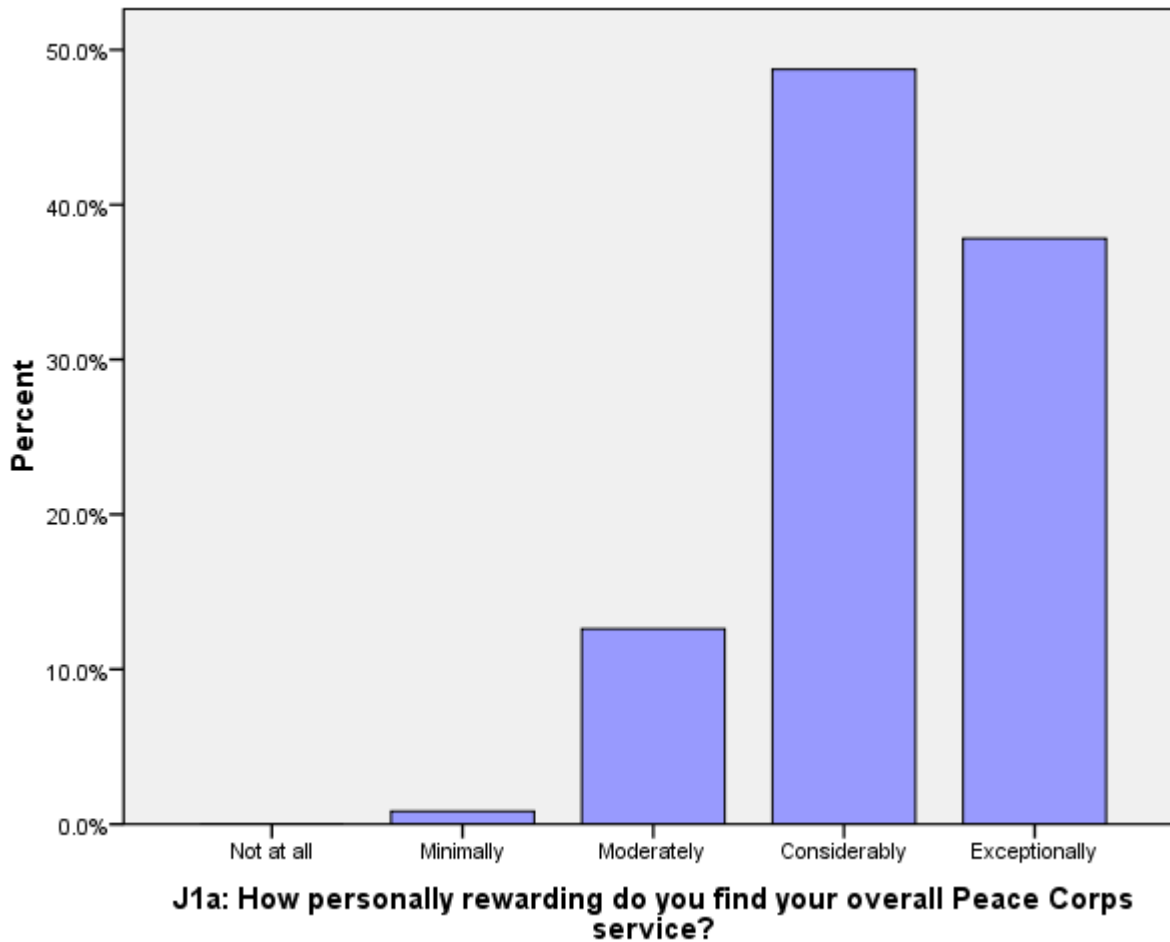
	No	Yes, I have no stress	Total
I8.NOSTRESS	98%	2%	121

J. Overall Assessment of Peace Corps Service

This section reports Volunteers' level of satisfaction with their Peace Corps service and their expectations about completing their service.

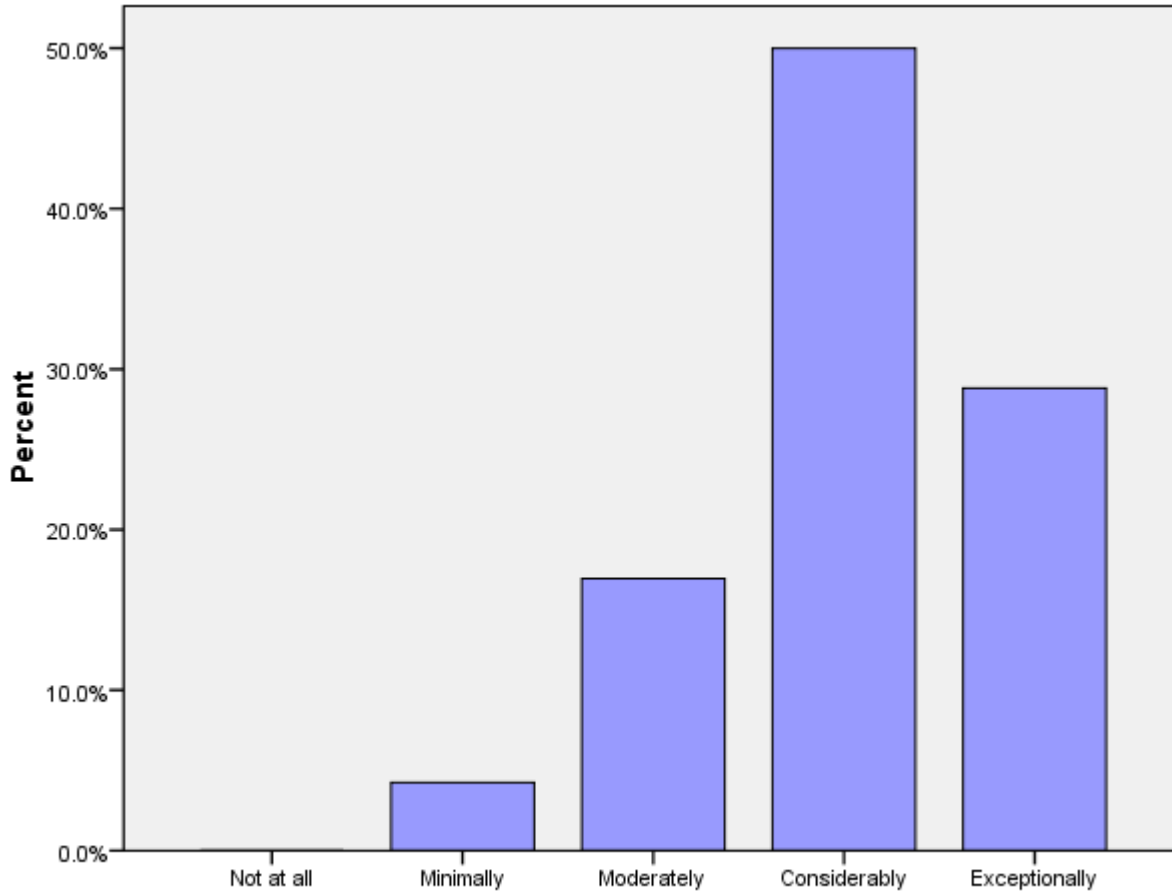
J1a: How personally rewarding do you find your overall Peace Corps service?

	Not at all	Minimally	Moderately	Considerably	Exceptionally	Total
J1A		1%	13%	49%	38%	119



J1b: How personally rewarding do you find your community involvement?

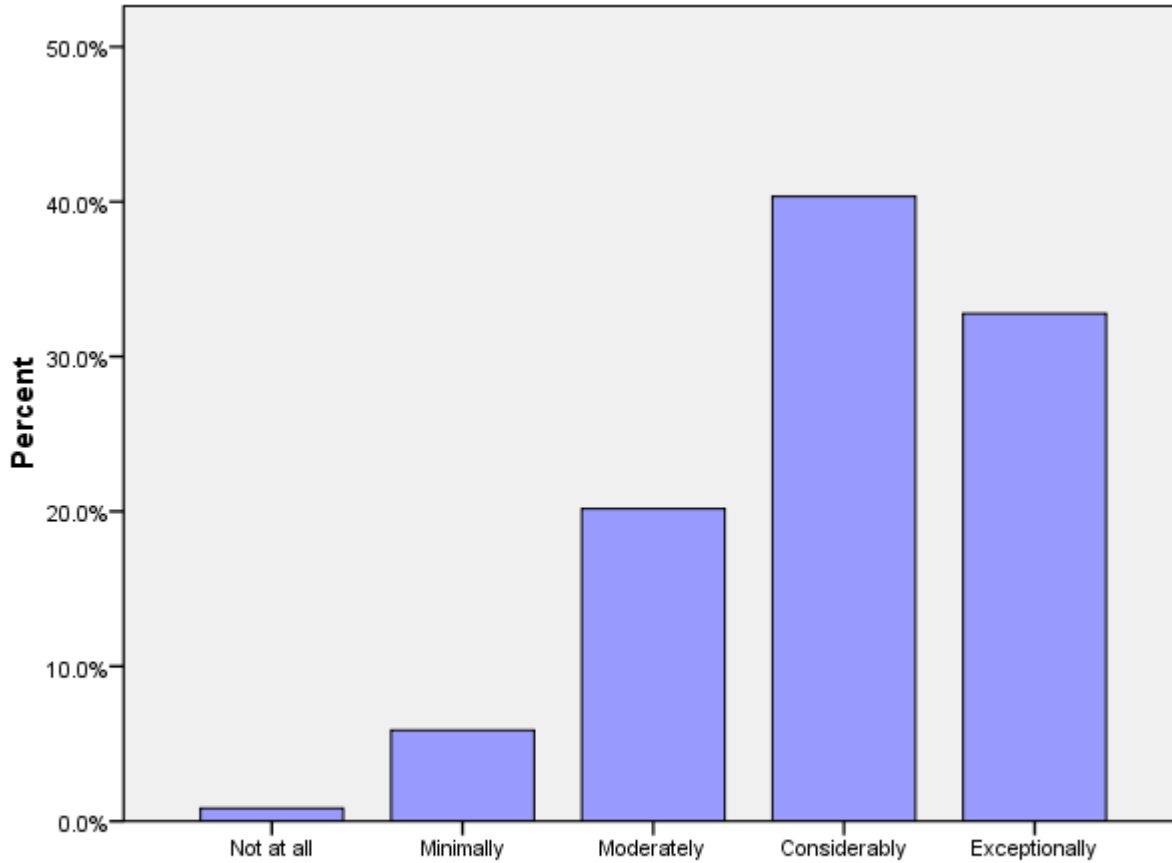
	Not at all	Minimally	Moderately	Considerably	Exceptionally	Total
J1B		4%	17%	50%	29%	118



J1b: How personally rewarding do you find your community involvement?

J1c: How personally rewarding do you find your experience with other Volunteers?

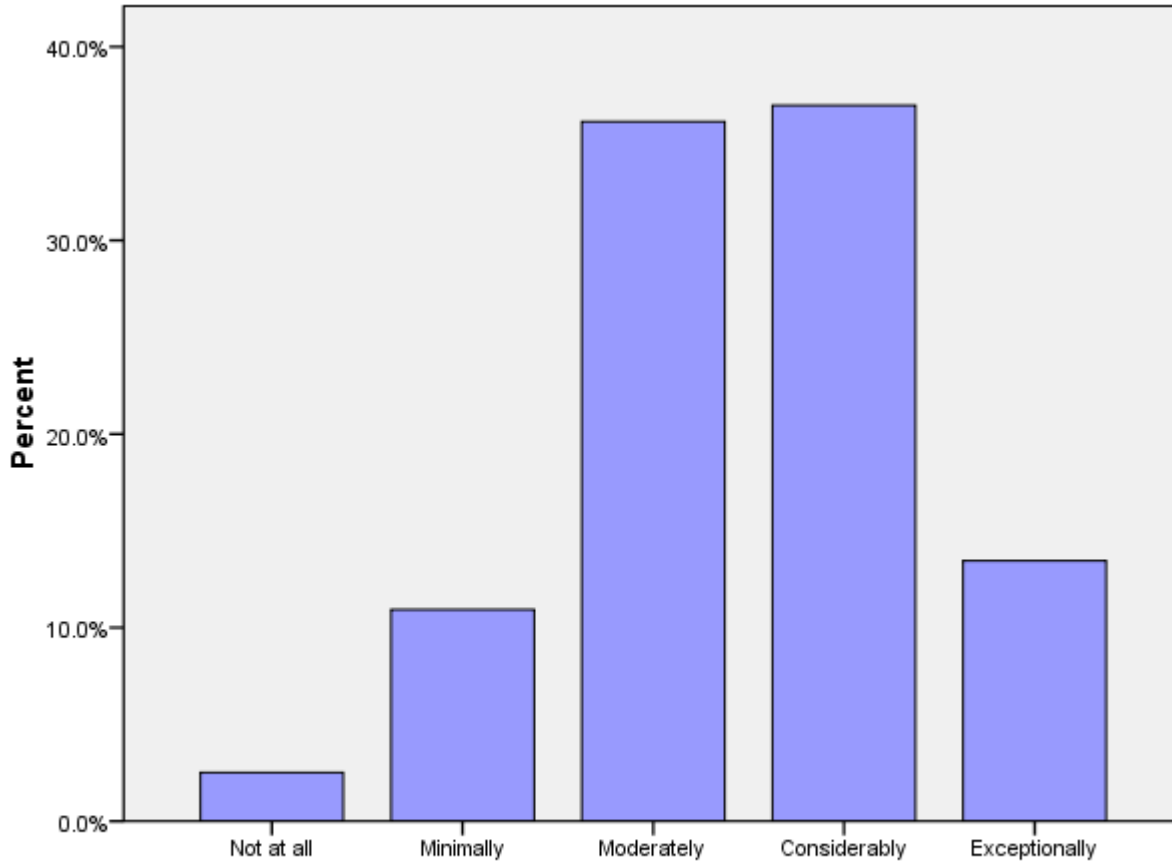
	Not at all	Minimally	Moderately	Considerably	Exceptionally	Total
J1C	1%	6%	20%	40%	33%	119



J1c: How personally rewarding do you find your experience with other Volunteers?

J1d: How personally rewarding do you find your work with counterparts/community partners?

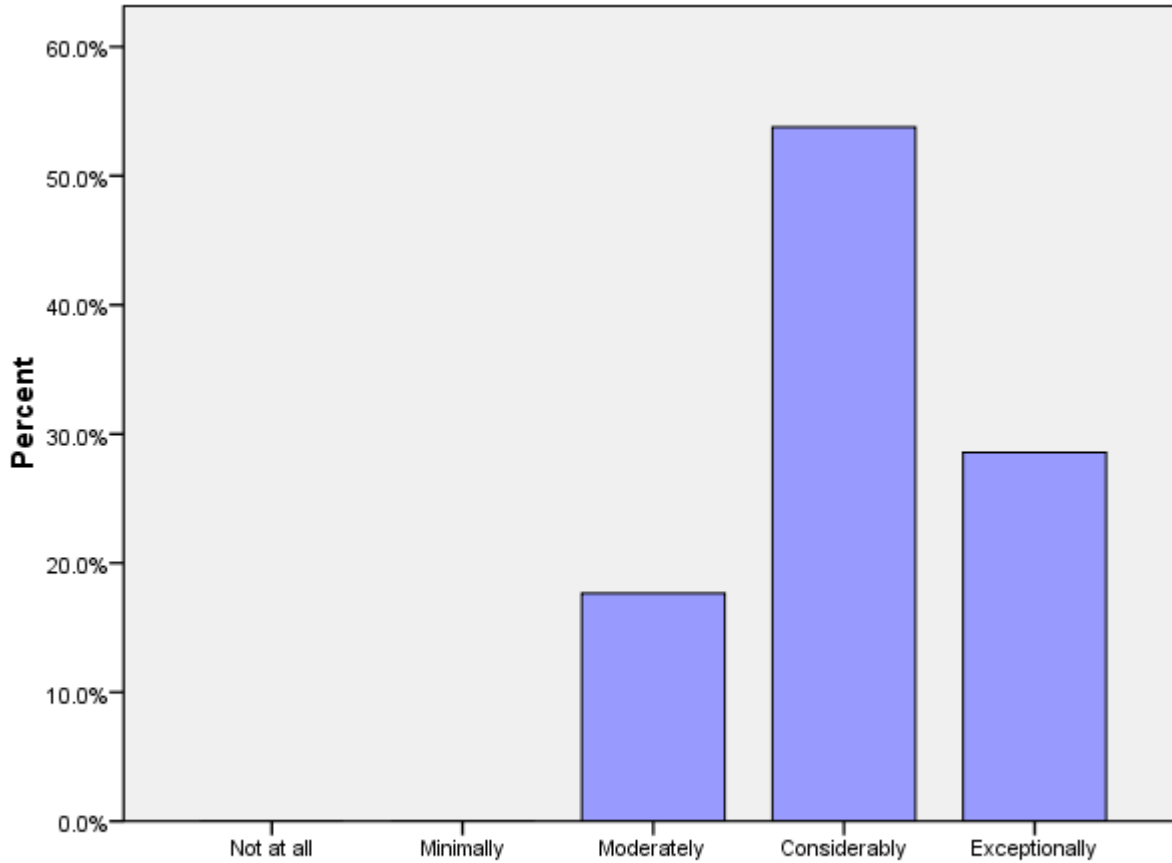
	Not at all	Minimally	Moderately	Considerably	Exceptionally	Total
J1D	3%	11%	36%	37%	13%	119



J1d: How personally rewarding do you find your work with counterparts/community partners?

J1e: How personally rewarding do you find your experience with other HCNs?

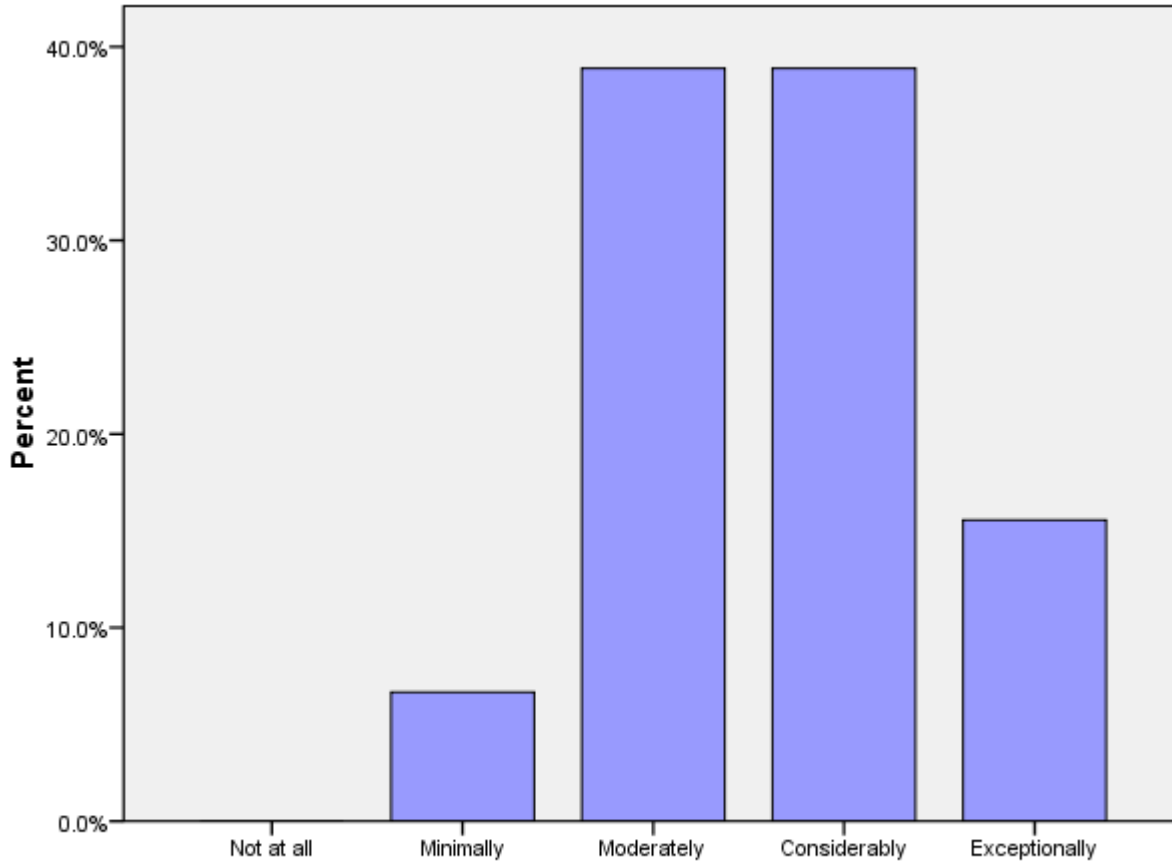
	Not at all	Minimally	Moderately	Considerably	Exceptionally	Total
J1E			18%	54%	29%	119



J1e: How personally rewarding do you find your experience with other HCNs?

J2a (PCVs at post 9 months+ months): Please rate how well you think you achieved Goal 1.

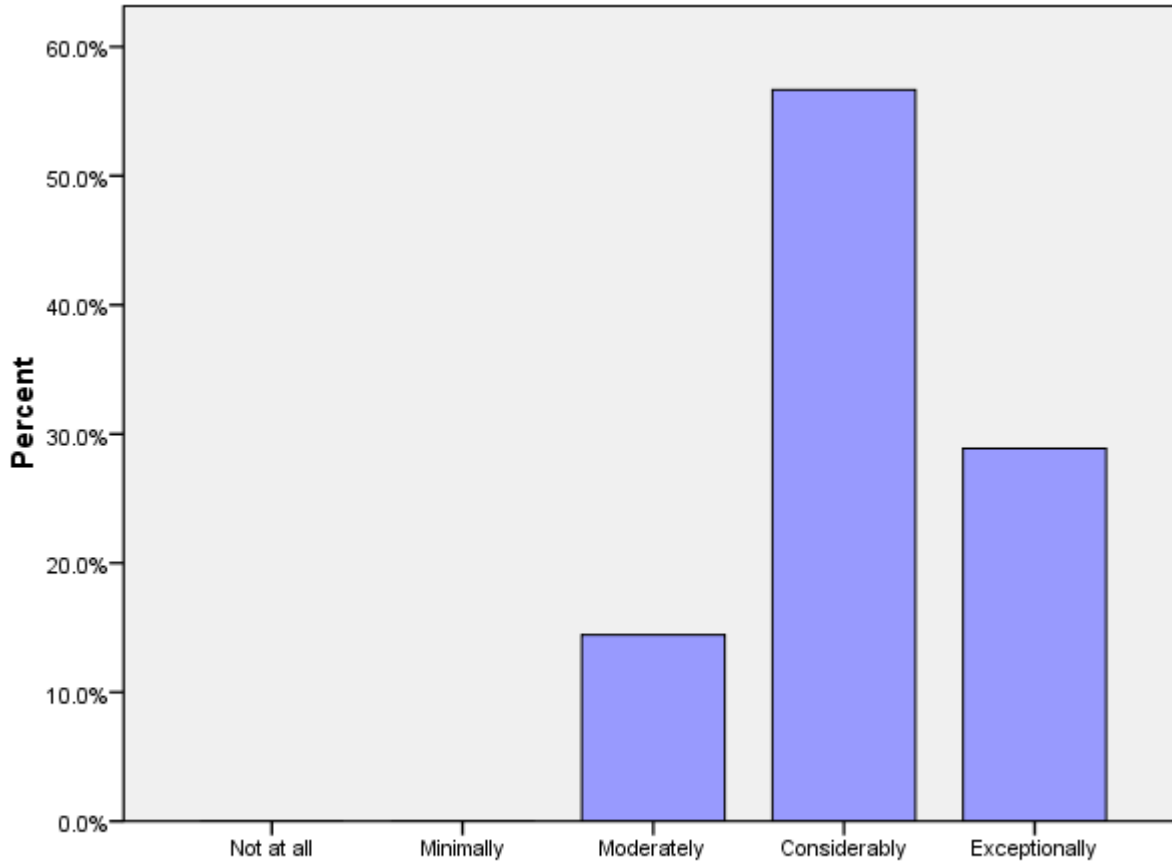
	Not at all	Minimally	Moderately	Considerably	Exceptionally	Total
J2A		7%	39%	39%	16%	90



J2a (PCVs at post 9 months+ months): Rate how well you think you achieved Goal 1.

J2b: (PCVs at post 9 months+ months): Please rate how well you think you achieved Goal 2.

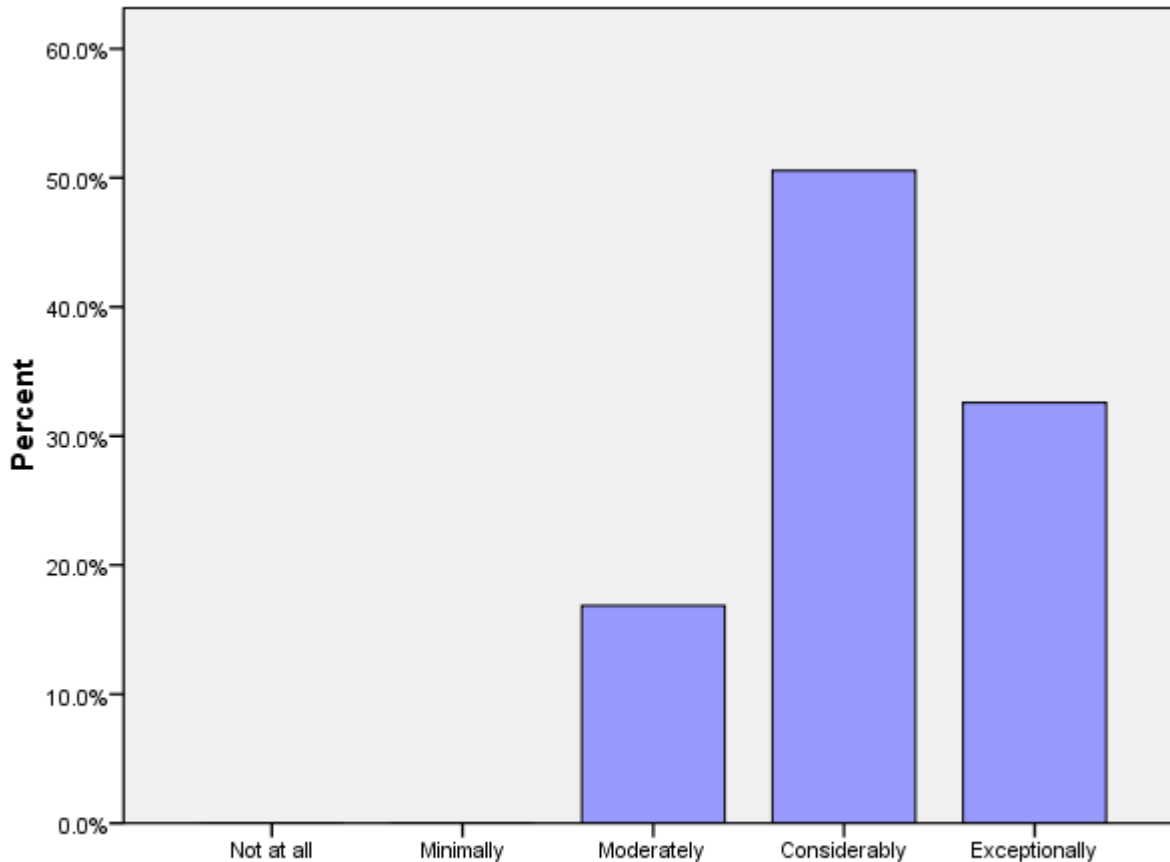
	Not at all	Minimally	Moderately	Considerably	Exceptionally	Total
J2B			14%	57%	29%	90



J2b (PCVs at post 9 months+ months): Rate how well you think you achieved Goal 2.

J2c (PCVs at post 9 months+ months): Please rate how well you think you achieved Goal 3.

	Not at all	Minimally	Moderately	Considerably	Exceptionally	Total
J2C			17%	51%	33%	89



J2c (PCVs at post 9 months+ months): Please rate how well you think you achieved Goal 3.

J3: Today, would you make the same decision to join the Peace Corps?

	No	Not likely	Possibly	Probably	Definitely	Total
J3		3%	3%	18%	76%	119

J4: Would you recommend Peace Corps service to others you think are qualified?

	No	Not likely	Possibly	Probably	Definitely	Total
J4			4%	17%	79%	119

J5: Do you intend to complete your Peace Corps service?

	No	Not sure	Yes	Might extend	Total
J5		2%	65%	34%	119

J6: Would your host country benefit most if the Peace Corps program was---?

	Discontinued	Reduced	Refocused/re-designed	Maintained as is	Expanded	Total
J6	1%	1%	28%	32%	39%	119

K. Activities After Peace Corps Service

This section reports on Volunteers' plans for after they have completed their Peace Corps Service.

K1: What are your plans after your Peace Corps service? Work in government.

Government			
In the U.S.	In your host country	In another country	N
89%	11%	22%	9

* Percent of cases was used. Percentages will be greater than 100 since Volunteers were asked to select all that applied.

K1: What are your plans after your Peace Corps service? Work in the private sector.

Private Sector			
In the U.S.	In your host country	In another country	N
75%	12%	38%	8

* Percent of cases was used. Percentages will be greater than 100 since Volunteers were asked to select all that applied.

K1: What are your plans after your Peace Corps service? Work for an NGO.

NGO			
In the U.S.	In your host country	In another country	N
100%	29%	29%	14

* Percent of cases was used. Percentages will be greater than 100 since Volunteers were asked to select all that applied.

K1: What are your plans after your Peace Corps service? Work for PC

Response.

Peace Corps Response			
In the U.S.	In your host country	In another country	N
75%	0%	50%	4

* Percent of cases was used. Percentages will be greater than 100 since Volunteers were asked to select all that applied.

K1: What are your plans after your Peace Corps service? Continue to participate in volunteer activities.

Volunteer Activities			
In the U.S.	In your host country	In another country	N
95%	19%	29%	21

* Percent of cases was used. Percentages will be greater than 100 since Volunteers were asked to select all that applied.

K1: What are your plans after your Peace Corps service? Graduate school/academic credentialing.

Graduate School			
In the U.S.	In your host country	In another country	N
100%	0%	4%	26

* Percent of cases was used. Percentages will be greater than 100 since Volunteers were asked to select all that applied.

K1: What are your plans after your Peace Corps service? Travel.

Travel			
In the U.S.	In your host country	In another country	N
64%	27%	59%	22

* Percent of cases was used. Percentages will be greater than 100 since Volunteers were asked to select all that applied.

K1: What are your plans after your Peace Corps service? Other.

Other			
In the U.S.	In your host country	In another country	N
67%	33%	0%	3

* Percent of cases was used. Percentages will be greater than 100 since Volunteers were asked to select all that applied.

K2: How prepared do you feel to share your Peace Corps experience and knowledge of your host country with others in the United States when you return?

	Not at all	Minimally	Moderately	Considerably	Total
How prepared do you feel to share your Peace Corps experience and knowledge of your host country with others in the United States when you return?	0%	0%	20%	80%	40

K3: How well do you feel Peace Corps has prepared you for life in the U. S. after you return?

	Not at all	Minimally	Moderately	Considerably	Exceptionally	Total
How well do you feel Peace Corps has prepared you for life in the U. S. after your return?	0%	21%	28%	36%	15%	39

K6: Have your life/career goals changed because of your Peace Corps service?

	No	Yes	Total
Have your life/career goals changed because of your Peace Corps service?	32%	68%	37

K7: How well informed are you about the following opportunities for returned Volunteers:

	Not informed	Somewhat informed	Well informed	N
Peace Corps Response	36%	59%	5%	39
Peace Corps' Fellows/USA program	5%	49%	46%	39
Noncompetitive eligibility	13%	55%	32%	38
RPCV Career Center in Washington, D.C.	51%	38%	10%	39
Returned Volunteer Services	49%	44%	8%	39

K8: How did you first learn about the Fellows/USA program?

Learn about Fellows/USA program	PC Website	71%	
	Word of mouth	49%	
	Mid-service mailing from PC	23%	
	From staff in the host country's PC office	23%	
	From a recruiter	17%	
	At PST	14%	
	University website	14%	
	At COS Conference	11%	
	Hotline	3%	
	At post's information resource center	3%	
	At IST	0%	
	Other	0%	
	N		35

* Percent of cases was used. Percentages will be greater than 100 since Volunteers were asked to select all that applied.

**K9: Which of the following resources do you think will be helpful as you exit
Peace Corps service?**

K9 Resources	Career Resource Manual	69%	
	RPCV career conferences	62%	
	RPCV job search webinars	59%	
	Applying to federal government with RPCV noncompetitive eligibility	56%	
	Access to free job bulletins	56%	
	Electronic newsletter with job postings and career advice	54%	
	List of RPCVs willing to talk to me about their careers	49%	
	Guide to speaking about my PC service to others (third goal)	46%	
	RPCV Handbook	44%	
	Connection with RPCVs through a mentoring program	31%	
	Self-assessment software (SIGI 3)	28%	
	NOT SURE	5%	
	Other	3%	
	N		39

* Percent of cases was used. Percentages will be greater than 100 since Volunteers were asked to select all that applied.

K10: Which of the following third goal (helping promote a better understanding of peoples on the part of Americans) activities do you plan to do when you return to the U. S.?

K10 Third Goal	Continue with volunteerism and service learning	82%	
	Speak to school age children about my experience	64%	
	Speak to a group of adults about my experience	64%	
	Join a RPCV group	64%	
	Write stories from my PC service on my own	46%	
	Participate in PC Week	31%	
	Obtain and use PC third goal resources	15%	
	NOT SURE	10%	
	Other	5%	
	Write stories from my PC service in conjunction with CWWS	3%	
	N		39

* Percent of cases was used. Percentages will be greater than 100 since Volunteers were asked to select all that applied.