



**Peace Corps Volunteer  
2009 Annual Volunteer Survey**

**Morocco  
October 13, 2009**

**Office of Strategic Information, Research and Planning**

## Table of Contents

<b>Introduction to the 2009 Annual Volunteer Survey Report .....</b>	<b>3</b>
<b>Overview of Post's 2009 Volunteer Survey Respondents.....</b>	<b>4</b>
<b>A. Applying to the Peace Corps.....</b>	<b>7</b>
<b>B. Preparation for the Peace Corps.....</b>	<b>10</b>
<b>C. Your Peace Corps Assignment .....</b>	<b>11</b>
<b>D. Training for Peace Corps Assignment .....</b>	<b>18</b>
<b>E. Volunteer Assignment Goals and Impact.....</b>	<b>21</b>
<b>F. Peace Corps Support.....</b>	<b>31</b>
<b>G. Your Safety and Security .....</b>	<b>37</b>
<b>H. Volunteers Working in HIV/AIDS .....</b>	<b>46</b>
<b>I. Your Life in the Peace Corps .....</b>	<b>47</b>
<b>J. Overall Assessment of Peace Corps Service .....</b>	<b>53</b>
<b>K. Activities After Peace Corps Service.....</b>	<b>62</b>

## **Introduction to the 2009 Annual Volunteer Survey Report**

This country report contains the tables and charts from the Volunteers in your country who completed the 2009 Annual Volunteer Survey (AVS). The results provide a picture of the activities, experiences and views of Peace Corps Volunteers in 2009. The results show areas where Volunteers' needs are met and identify areas where improvements may be needed. The survey was fielded from May through August 2009.

A core set of questions was asked of all Volunteers. For the first time, Volunteers were also asked a series of questions relevant to their time in country:

- Volunteers in country 8 or less months were asked about applying to and preparing for the Peace Corps.
- Volunteers in country 18 or less months were asked about the effectiveness of their pre-service training (PST).
- Volunteers in country 19 or more months were asked about their post-service plans, as well as the Peace Corps' resources for their post-service transition.

Tables and graphs are labeled by survey section and the survey question. The tables show the percent of post respondents that selected each choice and the total number of post respondents that answered the question. The number of responses for each question will vary, depending on:

- whether the question was asked of all Volunteers or only the Volunteers in-country a certain number of months and
- how many of the Volunteers who were "eligible" to answer the question did respond.

Most survey questions asked respondents to select only one from a set of choices. The percentages for the "select one" responses add up to 100 percent. Other questions asked Volunteers to "mark all that apply" in situations, for example, where it is likely that respondents are involved in more than one secondary activity. The percentages of the "mark all that apply" responses will total more than 100 percent; each percentage equals the number of respondents selecting that choice divided by the number of respondents who answered the question.

Posts are encouraged to compare these 2009 results with the 2006 and 2008 survey results to note trends and changes over time. Because questions are revised from one survey to the next, a crosswalk between the 2008 and 2009 questions is posted on the OSIRP intranet page under 2009 AVS Reports "Reference Documents." The earlier 2008 survey global, regional and post reports are also posted on the OSIRP Intranet page.

Volunteers' extensive narrative responses to the 29 open-ended questions on the survey are in the post's 2009 Annual Volunteer Survey Open Ended Responses report. All Volunteers' narrative responses to key questions will be analyzed for global themes and presented in a later report.

The number of surveys for each post includes surveys submitted online by Volunteers and completed paper surveys sent to the Peace Corps headquarters for hand-entry into the online survey system. The final count may include mostly completed partial surveys added to the final dataset after the survey closed.

## Overview of Post's 2009 Volunteer Survey Respondents

This overview presents basic information about the characteristics of Volunteers who completed the 2009 Annual Volunteer Survey at post.

**Completed Surveys by Months in Country**

	8 months or less		9 to 18 months		19 months or more		Total	
	Number	Percent	Number	Percent	Number	Percent	Number	Percent
Months3grp	68	31%	93	42%	60	27%	221	100%

**L1: What is your age?**

	20-29	30-49	50+	Total
AGE3grp	89%	7%	4%	214

**L2: What is your gender?**

	Female	Male	Total
GENDER	60%	40%	214

**Completed surveys by project.**

	Count	Column N %
Community Health in Rural Morocco	68	31%
Natural Resources Management & Community Development	45	20%
Small Business Development	55	25%
Youth Development	49	22%
Other. Please specify	4	2%
Total	221	100%

**C2: Which best describes the focus of your primary assignment/work?**

		Percent	Number
C2	Health extension	22%	49
	Business education/advising	19%	41
	Youth development	16%	36
	Environmental education	14%	32
	Community development	7%	16
	English teaching	6%	13
	Other: Please specify	4%	9
	Other education	3%	7
	Water sanitation	2%	4
	Forestry/parks	2%	4
	Agroforestry	2%	4
	NGO development	1%	3
	HIV/AIDS	0%	1
	Teacher training	0%	1
	Agriculture/fish/livestock	0%	1
	Urban & regional planning/municipal development		
	Math/science teaching		
	Information & communications technology (ICT)		
	Total	100%	221

**C2.TEXT: Which of the following initiatives does your primary work include? Other (specify)**

	PERCENT	NUMBER
C2.TEXT	Open-ended results. Not responsive to request.	
Total	100%	221

## **A. Applying to the Peace Corps**

*This section reports Volunteers' motivations in applying and accepting a Peace Corps assignment.*

### **A1: How important were the following factors in accepting a PC assignment?**

	Not Important	Somewhat important	Important	NA	Total
Different culture	3%	18%	79%		68
Work experience	4%	19%	74%	3%	68
Help others		6%	94%		68
International experience	6%	15%	78%	1%	68
Language	18%	28%	54%		68
Personal growth	3%	19%	78%		67
U. S. job market	59%	18%	21%	3%	68
Serve my country	30%	43%	27%		67
Travel/adventure	4%	21%	75%		67
Other: Please specify below	8%		12%	79%	24

### **A1\_OTHER: How important were the following factors in accepting a PC assignment? Other (specify)**

	PERCENT	NUMBER
A1_OTHER	Open-ended results. Not responsive to request.	
Total	100%	221

**A2. What prompted you to apply to the PC? Mark all that apply.**

	PCV Responses	% Involved in Initiative	Total PCVs Responding
What prompted you to apply to PC	Personal interest in the Peace Corps	51	75%
	Returned Peace Corps Volunteer (e.g., someone you met or know personally)	31	46%
	Peace Corps website	29	43%
	Peace Corps campus or community information session	19	28%
	Peace Corps recruiter	10	15%
	Other: Please specify	8	12%
	Article or book about the Peace Corps	7	10%
	Returned Peace Corps Volunteer who spoke to your school or group about the Peace Corps	6	9%
	Radio, TV, or print advertisement	1	1%
	Peace Corps material in the mail		
	Total		68

Percents may total to more than 100% since Volunteers were asked to "Mark all that apply."



**A2.OTHER.TEXT: What prompted you to apply to the PC? Other (specify)**

	PERCENT	NUMBER
A2.OTHER.TEXT	Open-ended results. Not responsive to request.	
Total	100%	221

## **B. Preparation for the Peace Corps**

*This section reports on Volunteers' assessment of the materials and information available before their service.*

**B1: How useful was the information on the PC website in preparing you for the realities of living and working as a Volunteer?**

	Not at all 1	2	3	4	Extremely 5	Don't know (did not access information)	Total
B1	1%	15%	50%	28%	1%	4%	68

**B2: How useful were the PC materials about your country in helping you prepare for your service?**

	Not at all 1	2	3	4	Extremely 5	Don't know (did not access information)	Total
B2	1%	9%	41%	41%	7%		68

**B3: How useful were the materials you received from the PC about your primary assignment in helping you prepare for your service?**

	Not at all 1	2	3	4	Extremely 5	Don't know (did not access information)	Total
B3	9%	18%	49%	22%	3%		68

**B4: How useful were the materials you received from the PC regarding the need for flexibility in adapting to your work?**

	Not at all 1	2	3	4	Extremely 5	Don't know (did not access information)	Total
B4		10%	28%	47%	15%		68

**B7: How prepared do you feel to meet the challenges of PC service?**

	Not at all 1	2	3	4	Exceptionally 5	Total
B7		4%	33%	51%	12%	67

## **C. Your Peace Corps Assignment**

*This section reports Volunteers' primary assignment work and secondary activities. The term "primary assignment" refers to the Volunteers' assignment which is part of an overall project plan designed by your host country partners and in-country Peace Corps staff.*

**C3: Which of the following activities does your primary assignment/work include? Mark all that apply.**

	PCV Responses	% Involved in Initiative	Total PCVs Responding
\$C3PrmAct Working with youth	89	41%	
English teaching	70	32%	
Environment work	65	30%	
Girls' education	62	28%	
HIV/AIDS	60	27%	
Arts	59	27%	
Income generation	58	26%	
Nutrition education	57	26%	
Rural development	55	25%	
Sports/fitness	53	24%	
Water and sanitation	53	24%	
WID/GAD	50	23%	
Business advertising	48	22%	
Working with NGO(s)	47	21%	
World Wise Schools/ Correspondence Match	40	18%	
Microenterprise development	39	18%	
Natural resources management	38	17%	
Biodiversity conservation	30	14%	
Mobilize host country nationals (HCNs) to volunteer	27	12%	
Information and communications technology (ICT)	22	10%	

Literacy	22	10%
Library development	21	10%
Child survival	18	8%
Working with special groups (e.g., disabled, elderly, ethnic minorities, orphans)	15	7%
Other: Please specify	10	5%
Household food security	5	2%
Urban development/municipal development	5	2%
Community food security (production/marketing)	1	0%
Total		219

Percents may total to more than 100% since Volunteers were asked to "Mark all that apply."

**C3: Which of the following activities does your primary assignment/work include? Other  
(specify)**

	Column N %	Count	Row N %
C3.OTHER.TEXT	Open-ended results. Not responsive to request.		
Total		221	100%

**C4: Hours Spent on Primary Assignment During Average Work Week**

	None	1-10 hrs	11-20 hrs	21-30 hrs	31-40 hrs	More than 40 hrs	Total
C4Hrs6grp	1%	39%	35%	18%	5%	2%	213

**C4: How many hours do you spend on your primary assignment during an average work week?**

	All Volunteers	Average	Lowest reported	Highest reported	Did not answer
C4	221	16.4	0	70	8

**C5: Which of the following do your secondary activities (other than your primary assignment work) include? Mark all that apply.**

		PCV Responses	% Involved in Initiative	Total PCVs Responding
\$C5SecAct	English teaching	100	49%	
	Working with youth	62	30%	
	World Wise Schools/ Correspondence Match	54	26%	
	Environment work	51	25%	
	Sports/fitness	51	25%	
	Arts	49	24%	
	WID/GAD	49	24%	
	Girls' education	48	24%	
	HIV/AIDS	45	22%	
	Literacy	42	21%	
	Nutrition education	34	17%	
	Rural development	34	17%	
	Mobilize host country nationals (HCNs) to volunteer	27	13%	
	Working with NGO(s)	27	13%	
	Income generation	24	12%	
	Working with special groups (e.g., disabled, elderly, ethnic minorities, orphans)	24	12%	
	Library development	22	11%	
	Natural resources management	21	10%	
	Information and communications technology (ICT)	15	7%	
	Water and sanitation	15	7%	
Business advertising	14	7%		
Other: Please specify	12	6%		

Microenterprise development	10	5%	
Biodiversity conservation	6	3%	
Child survival	5	2%	
Urban development/municipal development	3	1%	
Community food security (production/marketing)	2	1%	
Household food security	2	1%	
Total			204

Percents may total to more than 100% since Volunteers were asked to "Mark all that apply."

**C5: Which of the following do your secondary activities include? Other (specify)**

	Column N %	Count	Row N %
C5.OTHER.TEXT	Open-ended results. Not responsive to request.		
Total		221	100%

**C5: No Secondary Activities**

	Percent	Number
C5.NONE No	94%	208
Yes, I have no secondary activities	6%	13
Total	100%	221



**C6: Hours Spent on Secondary Activities During Average Work Week**

	None	1-10 hrs	11-20 hrs	21-30 hrs	31-40 hrs	More than 40 hrs	Total
C6Hrs6grp		81%	13%	4%	2%		203

**C6. How many hours do you spend on secondary activities during an average work week?**

	All Volunteers	Average	Lowest reported	Highest reported	Did not answer
C6	221	8.7	1	40	18

**C7: How personally satisfying is your--?**

	Not at all 1	2	3	4	Exceptionally 5	Total
Primary assignment	4%	17%	37%	28%	13%	219
Secondary project/activities	3%	12%	34%	38%	13%	210

## **D. Training for Peace Corps Assignment**

*This section reports Volunteers' assessments of the effectiveness of their Pre-Service Training and In-Service Training at post. In-Service Training (IST) includes: Reconnect; Technical IST; Mid-Service and Close of Service conferences; project management/leadership conferences; and other post-sponsored training sessions.*

**D1: (PCVs at post 18 months or less) How effective was your Pre-Service Training (PST) in preparing you to--**

	Not effective	Poor	Adequate	Effective	Very Effective	NA/No training	Total
Manage cultural differences		9%	28%	45%	19%		160
Deal with adjustment issues	1%	7%	36%	41%	14%	1%	160
Work with counterparts/community partners	5%	29%	42%	18%	2%	4%	160
Use language needed in work and social interactions	1%	13%	40%	32%	13%		160
Perform technical aspects of your work	9%	31%	31%	14%	1%	15%	160
Work on your project goals and objectives	3%	24%	36%	23%	6%	8%	159
Conduct a participatory community needs assessment (e.g., PACA)	4%	14%	31%	39%	11%	1%	160
Monitor your project goals and outcomes	2%	23%	36%	29%	3%	8%	159
Maintain your physical health	2%	10%	31%	40%	16%	2%	159
Maintain your mental/emotional health	4%	10%	33%	38%	13%	2%	159
Maintain your personal safety and security	1%	3%	22%	40%	33%	1%	160

**D5: How effective was your In-Service Training (IST) in preparing you to--**

	Not effective	Poor	Adequate	Effective	Very Effective	NA/No training	Total
Manage cultural differences	2%	7%	36%	28%	12%	14%	162
Deal with adjustment issues	2%	9%	35%	30%	9%	15%	161
Build and strengthen working relationships with counterparts/community partners	8%	19%	29%	26%	11%	8%	160
Use language needed in work and social interactions	6%	17%	25%	17%	10%	25%	162
Perform technical aspects of your work	4%	14%	34%	28%	12%	6%	160
Work on your project goals and objectives	4%	12%	30%	31%	17%	6%	162
Conduct a participatory community needs assessment (e.g.,PACA)	5%	14%	30%	20%	6%	25%	162
Monitor project goals and outcomes	2%	17%	29%	34%	8%	10%	160
Maintain your physical health	3%	7%	36%	25%	10%	19%	162
Maintain your mental/emotional health	4%	10%	36%	28%	9%	13%	162
Maintain your personal safety and security	2%	4%	31%	32%	12%	19%	162

**D8: Did you have this skill before joining the Peace Corps?**

	No/ No answer	Yes	Total
Skills specific to my assignment	65	153	218
Assessing community needs	152	67	219
Organizing/implementing community activities	101	118	219
Building capacity of local organizations	174	42	216
Monitoring, reporting, and evaluating my work	58	160	218
Designing and implementing training sessions	130	88	218

**D8: Is the skill needed for your Peace Corps work?**

	No/ No answer	Yes	Total
Skills specific to my assignment	20	198	218
Assessing community needs	11	208	219
Organizing/implementing community activities	15	204	219
Building capacity of local organizations	27	191	218
Monitoring, reporting, and evaluating my work	17	201	218
Designing and implementing training sessions	38	179	217

**D8: Have you had adequate Peace Corps training to acquire the skill?**

	No/ No answer	Yes	Total
Skills specific to my assignment	92	70	162
Assessing community needs	42	160	202
Organizing/implementing community activities	96	93	189
Building capacity of local organizations	131	67	198
Monitoring, reporting, and evaluating my work	71	107	178
Designing and implementing training sessions	128	64	192

## **E. Volunteer Assignment Goals and Impact**

*This section reports Volunteers' self-assessments of their impact on the individuals and organizations in the communities in which they serve. At the end of this section, Volunteers' third goal activities, participation in Coverdell World Wise School/Correspondence Match (CWWS/CM) and use of Peace Corps resources to support their work are reported in questions.*

**E1: To what extent does your Volunteer work assignment address the following?**

	Not at all 1	2	3	4	Exceptionally 5	NA	Total
Meets the objectives of the project plan	4%	9%	25%	40%	15%	6%	220
Builds local capacity for sustainability	5%	11%	36%	32%	10%	6%	219
Involves local people in planning and implementing activities	3%	10%	22%	39%	20%	6%	219
Complements other local development activities	9%	15%	27%	31%	10%	8%	219
Transfers skills to host country individuals and organizations	3%	12%	26%	40%	13%	5%	219
Mobilizes host country nationals (HCNs) to volunteer	13%	19%	33%	22%	6%	7%	218
Helps promote a better understanding of Americans on the part of the peoples served (goal 2)	1%	6%	23%	39%	24%	6%	218
Helps promote a better understanding of other peoples on the part of Americans (goal 3)	3%	9%	22%	36%	24%	6%	220

**E2: To what extent does your host community--?**

	Not at all 1	2	3	4	Exceptionally 5	NA	Total
Need the assistance that you provided	8%	23%	35%	30%	3%		60
Want the assistance that you provided	10%	18%	18%	32%	22%		60

**E3: How much impact does your assignment have on the capacities of your host counterparts/community partners?**

	None 1	2	3	4	Exceptional 5	NA	Total
Ability to access information (e.g., library, Internet, etc.)	20%	22%	29%	12%	3%	13%	219
Leadership skills	8%	10%	38%	31%	4%	9%	219
Planning and management	7%	12%	32%	35%	6%	9%	219
Problem solving/critical thinking	9%	14%	32%	31%	6%	8%	219
Self-esteem	9%	15%	24%	32%	10%	10%	219
Technical skills	9%	17%	32%	25%	7%	10%	217
Use of local resources	8%	17%	29%	28%	8%	10%	218
Use of external resources (e.g., grants, international NGOs)	12%	12%	26%	29%	9%	12%	217
Better understanding of Americans	3%	5%	21%	37%	26%	7%	219
Other: Please specify below	5%		5%	5%	3%	82%	77

**E3: How much impact does your assignment have on the capacities of your host counterparts/community partners? Other (specify)**

	Column N %	Count	Row N %
E3_OTHER	Open-ended results. Not responsive to request.		
Total			

**E4: How much impact does your assignment have on the capacities of your host individuals with whom you work?**

	None 1	2	3	4	Exceptional 5	NA	Total
Ability to access information (e.g., library, Internet, etc.)	17%	23%	32%	13%	3%	12%	217
Leadership skills	7%	16%	30%	33%	6%	9%	217
Planning and management	9%	20%	32%	26%	3%	10%	217
Problem solving/critical thinking	7%	17%	31%	31%	5%	9%	217
Self-esteem	6%	10%	22%	35%	18%	8%	217
Technical skills	12%	20%	23%	29%	6%	10%	216
Use of local resources	9%	20%	30%	24%	7%	10%	217
Use of external resources (e.g., grants, international NGOs)	19%	21%	23%	18%	4%	14%	216
Better understanding of Americans	2%	3%	19%	36%	34%	6%	215
Other: Please specify below	4%		4%	7%		84%	70

**E4: How much impact does your assignment have on the capacities of your host individuals with whom you work? Other (specify)**

	Column N %	Count	Row N %
E4_OTHER	Open-ended results. Not responsive to request.		
Total		221	100%



**E5: To what extent does your assignment enhance the capacities of organizations with whom you work?**

	None 1	2	3	4	Exceptional 5	NA	Total
Identifying and prioritizing organizational needs	11%	15%	28%	24%	5%	16%	220
Leadership	12%	14%	26%	27%	6%	15%	220
Management	14%	15%	25%	24%	6%	16%	220
Monitoring and evaluation	13%	21%	25%	16%	6%	18%	220
Planning and implementing organizational activities	8%	14%	25%	29%	9%	15%	220
Teamwork/participatory decision-making	9%	11%	26%	29%	10%	15%	220
Use of local resources	11%	15%	25%	26%	7%	16%	219
Ability to mobilize, manage, and sustain local volunteers	17%	17%	28%	16%	6%	17%	218
Other: Please specify below	6%	2%	4%	7%		81%	84

**E5: To what extent does your assignment enhance the capacities of organizations with whom you work? Other (specify)**

	Column N %	Count	Row N %
E5_OTHER	Open-ended results. Not responsive to request.		
Total		221	100%

**E6: How effective have you been in transferring knowledge and skills to help the following persons or groups build their capacities?**

	Not at all 1	2	3	4	Exceptionally 5	NA	Total
Your counterpart/community partner	17%	20%	24%	21%	6%	12%	219
Another institution/organization	13%	24%	25%	21%	2%	15%	219
Members of your host community	3%	16%	32%	32%	7%	10%	218
Other: Please specify below	3%		9%	8%		80%	76

**E7: To what extent have HC individuals gained a better understanding of Americans? Includes "Too early to tell."**

	Not at all	Minimally	Moderately	Considerably	Exceptionally	Too early to tell	Total
E7	0%	3%	27%	48%	14%	8%	217

**E7: To what extent have HC individuals gained a better understanding of Americans? Excludes "Too early to tell."**

	Not at all	Minimally	Moderately	Considerably	Exceptionally	Total
E7		4%	29%	52%	15%	200

**E9. In which of the following third goal activities have you participated during your PC service?**

		PCV Responses	% Doing This	Total PCVs Responding
\$E9Goal3Acts	Electronic updates	190	89%	214
	Hosting American visitors	138	64%	
	Enrollment in the CWWS/CMS program	120	56%	
	Personal website or blog	101	47%	
	Hard copy/paper update	89	42%	
	Pen pal program/letter exchange	30	14%	
	While on home leave, spoke at a school or community group	25	12%	
	Podcasted/created a slide show or video posted online	17	8%	
	Peace Corps Week activities	6	3%	
	Other please specify	5	2%	
	Total			

Percents may total to more than 100% since Volunteers were asked to "Mark all that apply."

**E9: When asked about third goal activities, Volunteer answered "No involvement in third goal activities."**

	Have done third goal activities	No third goal activities	Total
Peace Corps' third goal is to "help promote a better understanding of other peoples on the part of Americans." In which of the following third goal activities, including your contact with family and friends, have you participated during your Peace Corps	98%	2%	221

**E10: Would you recommend participation in the CWWS CMS to other Volunteers?**

	I have not participated in CWWS/CM.	I have participated in CWWS/CM & would recommend it	I have participated in CWWS/CM and would NOT recommend it	Total
E10	50%	46%	4%	209

**E11: To what extent have Americans gained a better understanding of HCNs? Includes "Too early to tell."**

	Not at all	Minimally	Moderately	Considerably	Exceptionally	Too early to tell	Total
E11	0%	3%	22%	51%	21%	3%	219

**E11: To what extent have Americans gained a better understanding of HCNs? Excludes "Too early to tell."**

	Not at all	Minimally	Moderately	Considerably	Exceptionally	Total
E11		3%	23%	52%	22%	213

**E12: Which of the following resources have been useful to you in your third goal activities?**

	Yes
Coverdell World Wise Schools staff (Useful)	54
Contact with other Peace Corps staff in Washington, D.C. (Useful)	34
Information at staging (Useful)	96
Information from your post sent to you before departure (Useful)	110
Internet (Useful)	184
Invitation kits (Useful)	107
Material in staging packet (Useful)	100
Peace Corps staff at post (e.g., World Wise School contact) (Useful)	67
Recruiting (Useful)	66
Resources available from Coverdell World Wise Schools (Useful)	38
Resources available on Peace Corps website (e.g., third goal section) (Useful)	70
Training on third goal (Useful)	53
Other: Please specify below (Useful)	5

**E12: Which of the following resources would/will be helpful to you in your third goal activities?**

	Yes
Coverdell World Wise Schools staff (Would be helpful)	82
Contact with other Peace Corps staff in Washington, D.C. (Would be helpful)	76
Information at staging (Would be helpful)	37
Information from your post sent to you before departure (Would be helpful)	41
Internet (Would be helpful)	35
Invitation kits (Would be helpful)	35
Material in staging packet (Would be helpful)	34
Peace Corps staff at post (e.g., World Wise School contact) (Would be helpful)	53
Recruiting (Would be helpful)	43
Resources available from Coverdell World Wise Schools (Would be helpful)	58
Resources available on Peace Corps website (e.g., third goal section) (Would be helpful)	56
Training on third goal (Would be helpful)	68
Other: Please specify below (Would/will be helpful)	3

**E12: Other useful/helpful resources? Other (specify)**

	Column N %	Count	Row N %
E12_OTHER	Open-ended results. Not responsive to request.		
Total		221	100%

**E13: Do you know about the Peace Corps Partnership Program (PCPP)?**

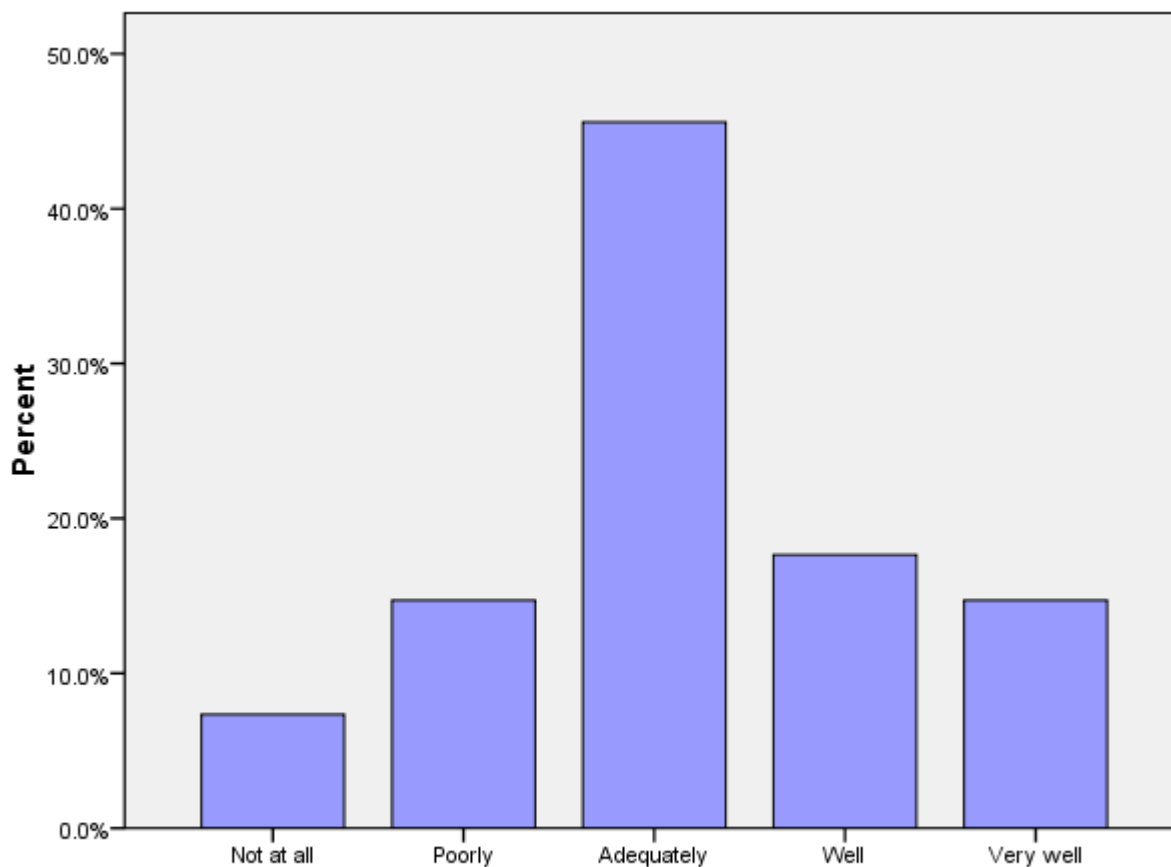
	No	Yes, but I haven't used it.	Yes, I have used it.	Total
E13	27%	65%	8%	220

## **F. Peace Corps Support**

*This section reports Volunteers' assessments of in-country Peace Corps.*

**F1 (PCVs at post 9+ months): How prepared for your arrival were the host people with whom you work?**

	Not at all	Poorly	Adequately	Well	Very well	Total
F1	7%	15%	46%	18%	15%	68



**F1: When you arrived at your community, how prepared for your arrival were the host people with whom you work?**

**F2: How satisfied are you with the health care you received from your PCMO(s)?**

	Not at all	Minimally	Adequately	Considerably	Exceptionally	Not Used	Total
F2	3%	12%	41%	27%	14%	3%	219

**F3: How satisfied are you with the following support provided by in-country PC staff?**

	Not at all 1	2	3	4	Completely 5	NA	Total
Administrative/logistical	1%	16%	24%	42%	17%		221
Cross-cultural	3%	10%	30%	36%	19%	2%	221
Emotional	7%	17%	24%	28%	16%	8%	220
Feedback on my work reports	20%	21%	22%	14%	5%	18%	221
Job assignment	10%	19%	30%	27%	10%	4%	220
Language learning	3%	15%	29%	34%	19%		220
Medical	3%	14%	33%	31%	16%	2%	221
Safety and security	1%	5%	23%	40%	29%	2%	221
Site selection/preparation	14%	20%	29%	22%	14%	0%	221
Technical skills	10%	27%	28%	16%	5%	14%	219

**F4: How satisfied are you with the Peace Corps allocation of time and resources to mental health/adjustment issues?**

	Not at all satisfied 1	2	3	4	Completely satisfied 5	Total
F4	6%	16%	35%	30%	12%	221

**F5: What level of PC support have you received to help cope with stress from issues such as HIV/AIDS, food insecurity, etc. in your community? (Including PCVs w/no need for support)**

	No support	Minimal support	Adequate support	Considerable support	Exceptional support	NA / I have no need for support	Total
F5	3%	13%	20%	8%	3%	54%	221

**F5: What level of PC support have you received to help cope with stress from issues such as HIV/AIDS, food insecurity, etc. in your community? (Excluding PCVs w/no need for support)**

	No support	Minimal support	Adequate support	Considerable support	Exceptional support	Total
F5	6%	27%	43%	18%	6%	102



**F6: How would you rate your interaction with the Country Director in terms of the following?**

	Not adequate	Adequate	Total
Responsiveness to my issues	1%	99%	220
Informative content	2%	98%	220
My comfort level discussing issues	2%	98%	220
Adequacy of visits	9%	91%	216

**F6b: How would you rate your interaction with the PTO/SRPTC in terms of the following?**

	Not adequate	Adequate	Total
Responsiveness to my issues	12%	88%	205
Informative content	13%	87%	204
My comfort level discussing issues	13%	87%	204
Adequacy of visits	19%	81%	199

**F6c: How would you rate your interaction with the APCD/Program Manager in terms of the following?**

	Not adequate	Adequate	Total
Responsiveness to my issues	24%	76%	213
Informative content	22%	78%	215
My comfort level discussing issues	18%	82%	215
Adequacy of visits	25%	75%	210

**F6d: How would you rate your interaction with the PCMO in terms of the following?**

	Not adequate	Adequate	Total
Responsiveness to my issues	18%	82%	214
Informative content	24%	76%	214
My comfort level discussing issues	19%	81%	212
Adequacy of visits	17%	83%	198

**F6e: How would you rate your interaction with the Safety and Security Coordinator in terms of the following?**

	Not adequate	Adequate	Total
Responsiveness to my issues	10%	90%	218
Informative content	10%	90%	217
My comfort level discussing issues	8%	92%	216
Adequacy of visits	14%	86%	205

**F6f: How would you rate your interaction with the Training Manager in terms of the following?**

	Not adequate	Adequate	Total
Responsiveness to my issues	11%	89%	203
Informative content	16%	84%	199
My comfort level discussing issues	13%	87%	200
Adequacy of visits	17%	83%	194

**F6g: How would you rate your interaction with administrative staff in terms of the following?**

	Not adequate	Adequate	Total
Responsiveness to my issues	11%	89%	210
Informative content	9%	91%	206
My comfort level discussing issues	9%	91%	207
Adequacy of visits	14%	86%	203

**F6h: How would you rate your interaction with other post staff (please specify) in terms of the following?**

	Not adequate	Adequate	Total
Responsiveness to my issues	24%	76%	25
Informative content	24%	76%	17
My comfort level discussing issues	18%	82%	17
Adequacy of visits	14%	86%	21

**F7: To what extent is your CD aware of Volunteer issues and concerns through interactions with Volunteers?**

	Not at all	Minimally	Adequately	Considerably	Completely	Total
F7		1%	14%	51%	33%	218

**F8: What is the most effective way you use to communicate with PC staff?**

Most effective	Text messaging	34%	75
	Cellphone (voice)	30%	67
	Email/ Internet	22%	48
	In-person visits	12%	26
	Telephone at residence or work	2%	4
	Other. Please specify		
	Telephone not at residence or work		
	Letters		
	CB radio		
Total	100%	220	

**F8: What is the second most effective way you use to communicate with PC staff?**

Second most effective	Email/ Internet	38%	83
	Cellphone (voice)	31%	68
	Text messaging	26%	57
	Telephone at residence or work	3%	6
	In-person visits	2%	4
	Telephone not at residence or work	0%	1
	Letters	0%	1
	Other. Please specify		
	CB radio		
	Total	100%	220

**F8: What is the third most effective way you use to communicate with PC staff?**

(C11_THREE) Third most effective	Email/ Internet	35%	77
	Text messaging	22%	49
	Cellphone (voice)	22%	49
	In-person visits	13%	29
	Telephone at residence or work	6%	13
	Letters	1%	3
	Other. Please specify		
	Telephone not at residence or work		
	CB radio		
	Total	100%	220

**F9: How do you rate the effectiveness of your communication resources for contacting in-country PC staff?**

	Very poor	Poor	Adequate	Good	Excellent	Total
F9	2%	3%	27%	39%	29%	220

## **G. Your Safety and Security**

*This section reports on how safe and informed about their safety Volunteers feel. Their experiences with reported and unreported crimes are summarized.*

### **G1: How safe do you feel...?**

	Not at All Safe	Often Safe	Adequately Safe	Usually Safe	Very Safe	Total
Where you live	1%	3%	9%	23%	64%	218
Where you work	0%	3%	9%	17%	71%	218
When you travel in-country		12%	30%	42%	16%	218
City where main Peace Corps office is located	0%	1%	21%	41%	36%	208

### **G2: Please indicate the number of times you experienced the following types of discrimination/harassment.**

	Never	Once	2-5 times	6-10 times	11-25 times	26+ times	Total
Age	83.9%	1.8%	6.0%	3.6%	2.4%	2.4%	168
Anti-American	48.0%	10.7%	25.4%	6.8%	4.0%	5.1%	177
Disability	99.4%		.6%				164
Gender	59.0%	3.0%	14.5%	9.0%	2.4%	12.0%	166
Racial/color	78.8%	1.8%	4.8%	4.2%	3.0%	7.3%	165
Religious	43.8%	7.0%	21.6%	8.6%	6.5%	12.4%	185
Sexual (verbal)	42.8%	3.0%	9.6%	7.2%	7.8%	29.5%	166
Sexual (physical)	67.5%	11.8%	15.4%	3.0%	1.2%	1.2%	169
Sexual orientation	97.6%		1.2%	.6%		.6%	164

**G2: Please indicate the number of times you reported discrimination/harassment events to PC.**

	Never	Once	2-5 times	6-10 times	11-25 times	26+ times	Total
Age	85.2%	11.1%	3.7%				27
Anti-American	89.7%	5.7%	4.6%				87
Disability	100.0%						2
Gender	91.4%	7.1%	1.4%				70
Racial/color	94.6%	5.4%					37
Religious	95.8%	3.2%	1.1%				95
Sexual (verbal)	84.7%	6.1%	8.2%	1.0%			98
Sexual (physical)	58.9%	30.4%	10.7%				56
Sexual orientation	100.0%						6

**G3: Please indicate the number of times you experienced the following types of crimes.**

	Never	Once	2-5 times	6-10 times	11-25 times	26+ times	Total
Burglary	95.9%	3.5%	.6%				172
Theft	63.5%	22.7%	13.3%	.6%			181
Robbery	93.7%	6.3%					175
Physical assault	87.4%	7.5%	4.6%		.6%		174
Aggravated assault	98.2%	1.8%					169
Sexual assault	84.9%	9.3%	4.1%	1.2%		.6%	172
Rape	100.0%						166

**G3: Please indicate the number of times you reported the following crimes to Peace Corps.**

	Never	Once	2-5 times	6-10 times	11-25 times	26+ times	Total
Burglary	87.5%		12.5%				8
Theft	35.5%	48.4%	16.1%				62
Robbery	8.3%	91.7%					12
Physical assault	47.6%	42.9%	9.5%				21
Aggravated assault	25.0%	75.0%					4
Sexual assault	53.8%	38.5%	7.7%				26
Rape	100.0%						1

**G4a: If you did not report your experience with burglary, please your reason(s) for not reporting.**

		PCV Responses	% Reason Not Rptd	Total PCVs Responding
\$NoRpBurg	I felt it was too minor or common to report	6	60%	
	I did not think the PC could help	4	40%	
	It might hurt my relationship with the community	3	30%	
	Other	3	30%	
	I believed it could result in changing sites	1	10%	
	Reporting might result in disciplinary action against me	1	10%	
	Concerns of a possible breach in confidentiality			
	Total			

\*Percents may total to more than 100% since Volunteers were asked to "mark all that apply."

**G4b: If you did not report your experience with theft, please your reason(s) for not reporting.**

		PCV Responses	% Reason Not Rptd	Total PCVs Responding
\$NoRpTheft	I felt it was too minor or common to report	25	69%	
	I did not think the PC could help	17	47%	
	Other	8	22%	
	It might hurt my relationship with the community	3	8%	
	Reporting might result in disciplinary action against me	1	3%	
	I believed it could result in changing sites			
	Concerns of a possible breach in confidentiality			
	Total			

\*Percents may total to more than 100% since Volunteers were asked to "mark all that apply."



**G4c: If you did not report your experience with robbery, please your reason(s) for not reporting.**

	PCV Responses	% Reason Not Rptd	Total PCVs Responding
\$NoRpRobb	Other	4	67%
	I did not think the PC could help	1	17%
	I felt it was too minor or common to report	1	17%
	I believed it could result in changing sites		
	Concerns of a possible breach in confidentiality		
	Reporting might result in disciplinary action against me		
	It might hurt my relationship with the community		
	Total		

\*Percents may total to more than 100% since Volunteers were asked to "mark all that apply."

**G4d: If you did not report your experience with physical assault, please your reason(s) for not reporting.**

	PCV Responses	% Reason Not Rptd	Total PCVs Responding
\$NoRpPhAs	I felt it was too minor or common to report	9	60%
	I did not think the PC could help	3	20%
	Other	3	20%
	I believed it could result in changing sites	1	7%
	Reporting might result in disciplinary action against me	1	7%
	Concerns of a possible breach in confidentiality		
	It might hurt my relationship with the community		
	Total		

\*Percents may total to more than 100% since Volunteers were asked to "mark all that apply."

**G4: If you did not report your experience with aggravated assault, please your reason(s) for not reporting.**

	PCV Responses	% Reason Not Rptd	Total PCVs Responding
\$NoRpAgAs Other	3	75%	
I did not think the PC could help	1	25%	
I believed it could result in changing sites			
I felt it was too minor or common to report			
Concerns of a possible breach in confidentiality			
Reporting might result in disciplinary action against me			
It might hurt my relationship with the community			
Total			4

\*Percents may total to more than 100% since Volunteers were asked to "mark all that apply."

**G4e: If you did not report your experience with sexual assault, please your reason(s) for not reporting.**

	PCV Responses	% Reason Not Rptd	Total PCVs Responding
\$NoRpSxAs	I felt it was too minor or common to report	12	50%
	I did not think the PC could help	8	33%
	Other	6	25%
	Reporting might result in disciplinary action against me	3	12%
	I believed it could result in changing sites	2	8%
	Concerns of a possible breach in confidentiality	2	8%
	It might hurt my relationship with the community	2	8%
	Total		

\*Percents may total to more than 100% since Volunteers were asked to "mark all that apply."

**G4f: If you did not report your experience with rape, please your reason(s) for not reporting.**

	PCV Responses	% Reason Not Rptd	Total PCVs Responding
\$NoRpRape    Other	3	100%	
I did not think the PC could help			
I believed it could result in changing sites			
I felt it was too minor or common to report			
Concerns of a possible breach in confidentiality			
Reporting might result in disciplinary action against me			
It might hurt my relationship with the community			
Total			3

\*Percents may total to more than 100% since Volunteers were asked to "mark all that apply."

## **H. Volunteers Working in HIV/AIDS**

*This section reports Volunteers' involvement in HIV/AIDS and their perceived effectiveness of their HIV/AIDS related activities.*

**H1: Which of the following best describes your involvement in HIV/AIDS activities?**

	HIV/AIDS work is my primary assignment.	HIV/AIDS work is part of my secondary activities.	Involved in HIV/AIDS efforts, not primary/secondary work	Not involved in any HIV/AIDS related activities	Total
H1	11%	25%	32%	32%	219

**H2: How well has PC training prepared you to undertake your HIV/AIDS activities?**

	Not at all	Poorly	Adequately	Well	Very well	NA	Total
H2	7%	18%	38%	17%	10%	9%	148

**H3: In working with HC individuals or groups, how would you rate the effectiveness of your specific HIV/AIDS activities? (Including the "Don't Know" responses)**

	Seldom effective	Sometimes effective	Often effective	Almost always effective	Don't know	Total
H3	5%	34%	30%	10%	22%	147

**H3: In working with HC individuals or groups, how would you rate the effectiveness of your specific HIV/AIDS activities? (Excluding the "Don't Know" responses)**

	Seldom effective	Sometimes effective	Often effective	Almost always effective	Total
H3	6%	43%	38%	12%	115

## I. Your Life in the Peace Corps

*This section reports on Volunteers' descriptions of and adjustments to their living conditions, including stress factors and how Volunteers cope with stress.*

### I1: Have you lived with a host country individual or family?

	Never lived with a host country individual or family	Yes, I lived with a host country individual or family only	Yes, in my community (not during PST).	Yes, both during PST and later in my community.	Total
I1	0%	6%	2%	91%	216

### I2: How often do you interact with HCNs in community/family social events?

	Daily	Several times a week	Weekly	Several times a month	Monthly	Less than once a month	Total
I2	47%	31%	12%	8%	2%		216

### I3: How well can you communicate in the language used by most people in your community?

	Not at all	Poorly	Adequately	Well	Very well	Total
I3	0%	13%	52%	21%	12%	216

### I4: Do you have the following at your worksite?

	Never	Sometimes or more often	Total
Electricity	5%	95%	208
Running water	14%	86%	206

**I4: Do you have the following at your residence?**

	Never	Sometimes or more often	Total
Electricity	2%	98%	204
Running water	12%	88%	205

**I5: How well do your PC experiences match the expectations you had before you became a Volunteer?**

	Not at all	Minimally	Moderately	Considerably	Exceptionally	Total
I5	5%	14%	43%	31%	7%	216



**17: To what extent do the following create stress and/or emotional health issues for you?**

	Not at all stressful 1	2	3	4	Exceptionally stressful 5	NA	Total
Cultural issues	9%	18%	38%	28%	7%		216
Dealing with violence in country (e.g., civil unrest, domestic violence, corporal punishment)	47%	30%	6%	7%	1%	10%	217
Health/medical problems	18%	30%	31%	15%	5%	1%	217
Issues including family, friends, loved ones in U.S.	21%	31%	26%	16%	6%	0%	216
Isolation/loneliness	12%	27%	30%	17%	12%	1%	217
Local language	9%	20%	32%	27%	12%		216
Primary assignment	11%	19%	36%	23%	10%	1%	216
Romantic relationships in-country	36%	16%	14%	9%	3%	22%	217
Interactions with other Volunteers	36%	31%	24%	6%	2%	1%	216
Interactions with PC Staff	33%	35%	20%	7%	4%	0%	217
Safety and security	43%	36%	15%	4%	1%	0%	214
Other: Please specify below	11%	3%	5%	5%	32%	43%	37

**18: Please mark all of the typical ways in which you cope with stress.**

	PCV Responses	% Using This Stress Reducer	Total PCVs Responding
\$18LessStress    Talk with friends and family in US	186	87%	
Pursue personal hobbies	180	85%	
Do sports	168	79%	
Talk with PCVs outside my community	165	77%	
Leave the community for a time	165	77%	
Talk with PCVs in my community	118	55%	
Get involved in other projects	116	54%	
Talk with co-workers or friends (not PCVs)	90	42%	
Talk with my host family	74	35%	
Meditate	60	28%	
Pray	60	28%	
Talk with PC in-country staff	35	16%	
Do other activity (specify)	12	6%	
Talk with Office of Special Services staff			
Total			

\*Percents total to more than 100% since Volunteers were asked to "mark all that apply."

**18: Others I talk with to reduce stress**

	Percent	Number
18.OTHERS.TEXT	Open-ended results. Not responsive to request.	
Total	100%	221

**I8: Other activities to reduce stress**

	Percent	Number
I8.OTHRACT.TEXT	Open-ended results. Not responsive to request.	
Total	100%	221

**I8: When asked about ways of coping with stress, Volunteers who answered "No stress"**

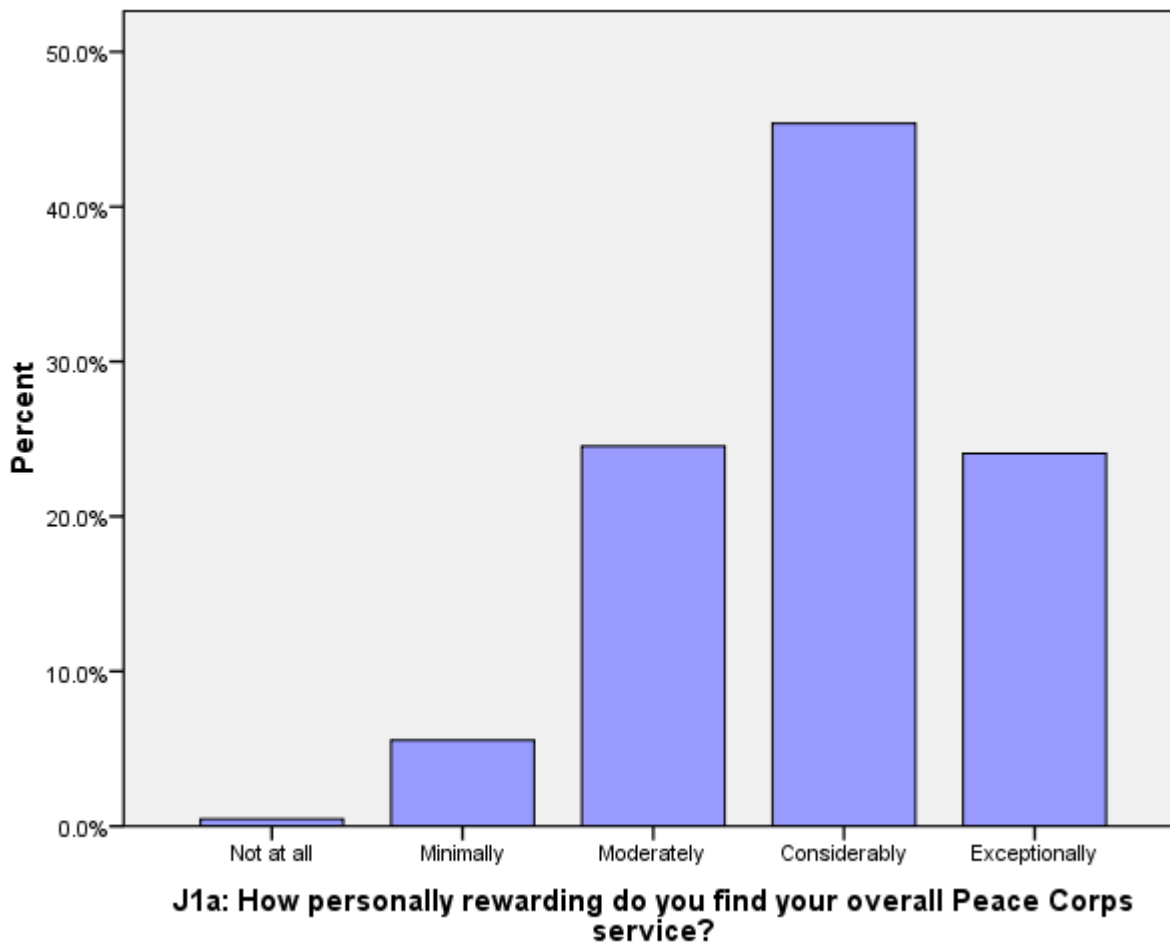
	No	Yes, I have no stress	Total
I8.NOSTRESS	99%	1%	221

## J. Overall Assessment of Peace Corps Service

This section reports Volunteers' level of satisfaction with their Peace Corps service and their expectations about completing their service.

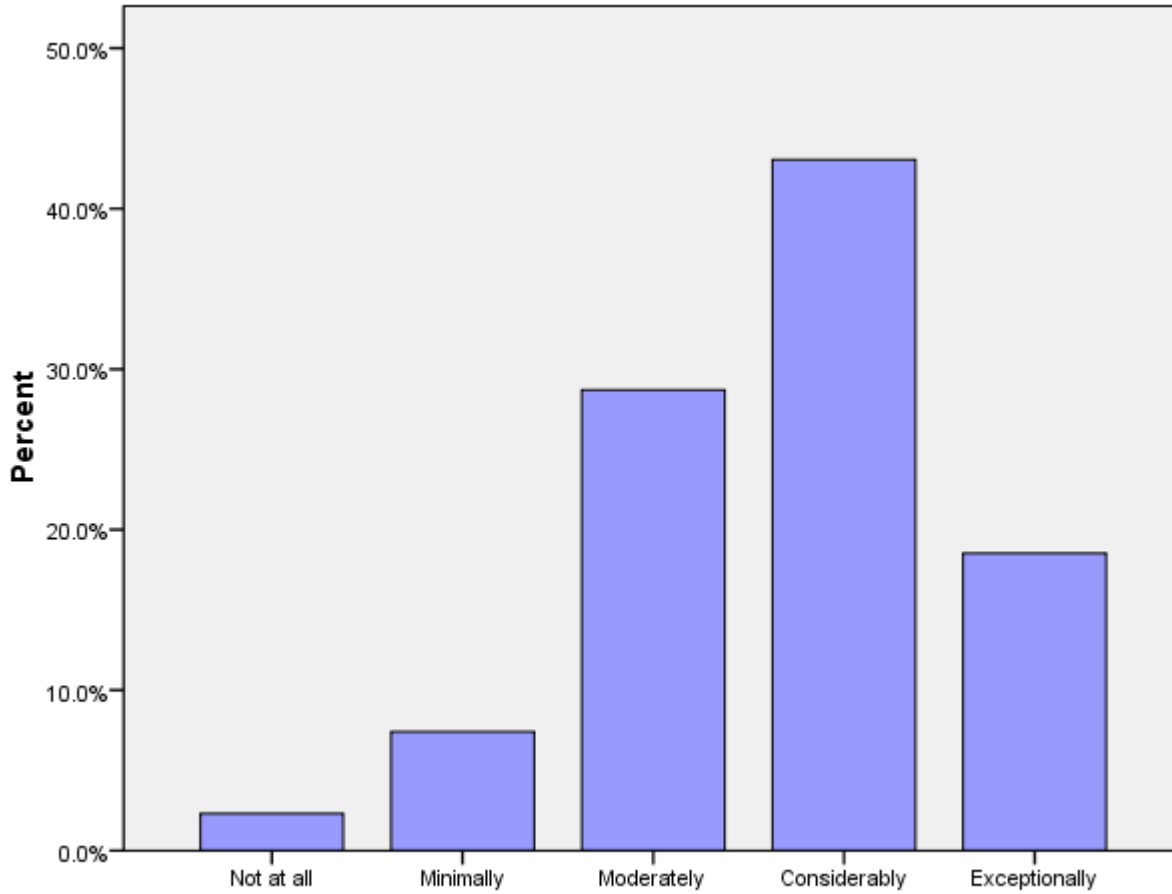
**J1a: How personally rewarding do you find your overall Peace Corps service?**

	Not at all	Minimally	Moderately	Considerably	Exceptionally	Total
J1A	0%	6%	25%	45%	24%	216



**J1b: How personally rewarding do you find your community involvement?**

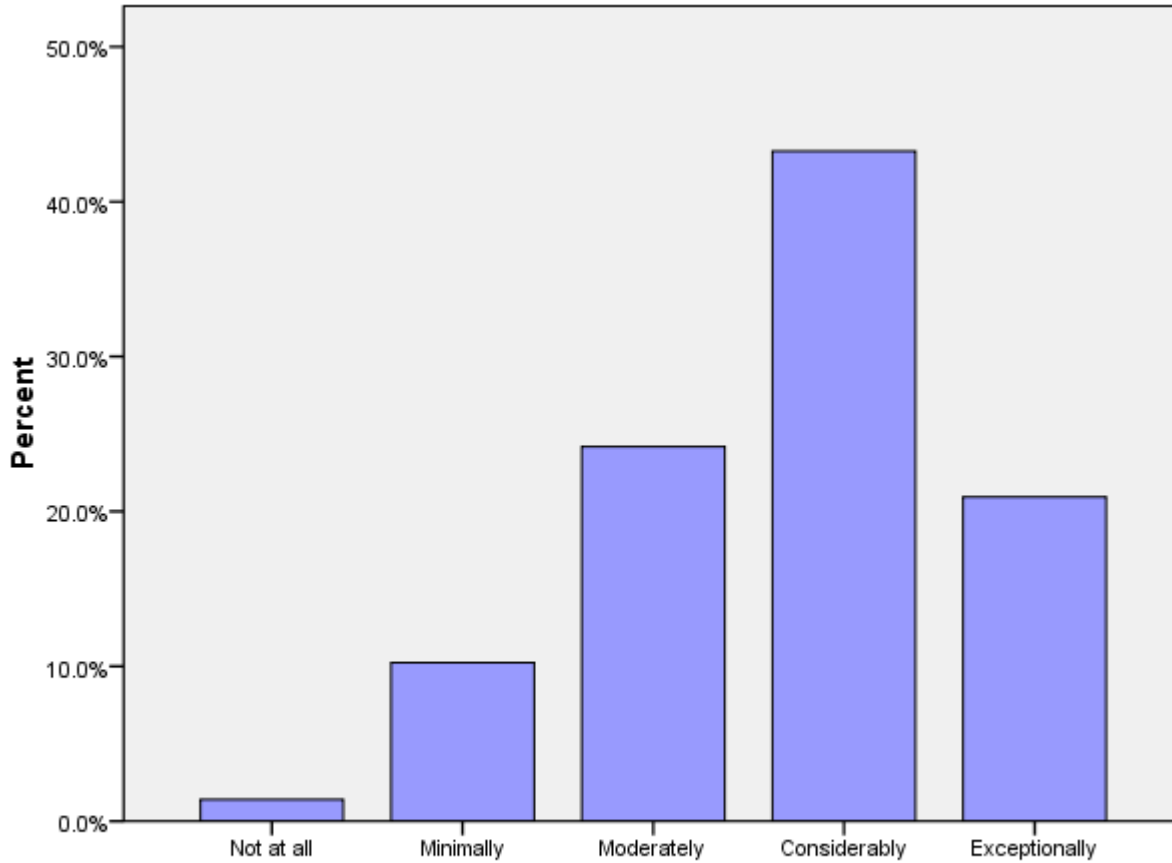
	Not at all	Minimally	Moderately	Considerably	Exceptionally	Total
J1B	2%	7%	29%	43%	19%	216



**J1b: How personally rewarding do you find your community involvement?**

**J1c: How personally rewarding do you find your experience with other Volunteers?**

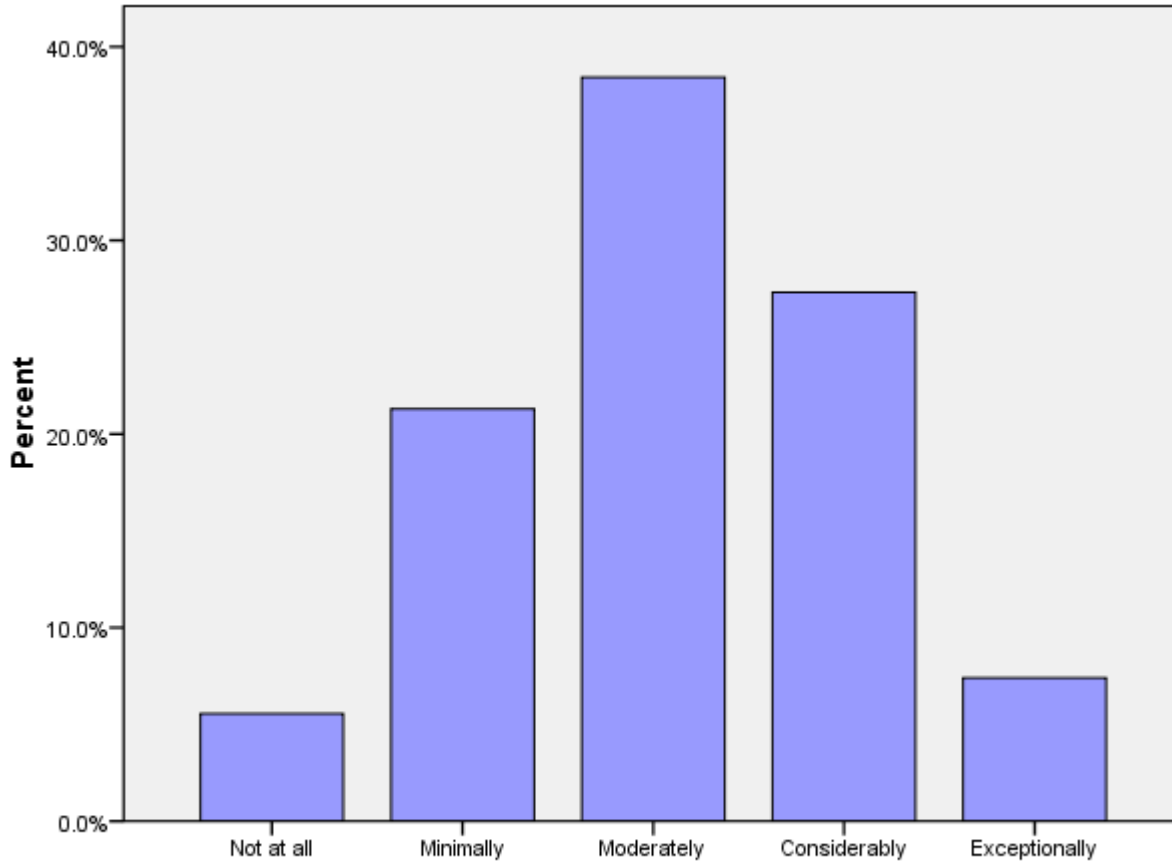
	Not at all	Minimally	Moderately	Considerably	Exceptionally	Total
J1C	1%	10%	24%	43%	21%	215



**J1c: How personally rewarding do you find your experience with other Volunteers?**

**J1d: How personally rewarding do you find your work with counterparts/community partners?**

	Not at all	Minimally	Moderately	Considerably	Exceptionally	Total
J1D	6%	21%	38%	27%	7%	216

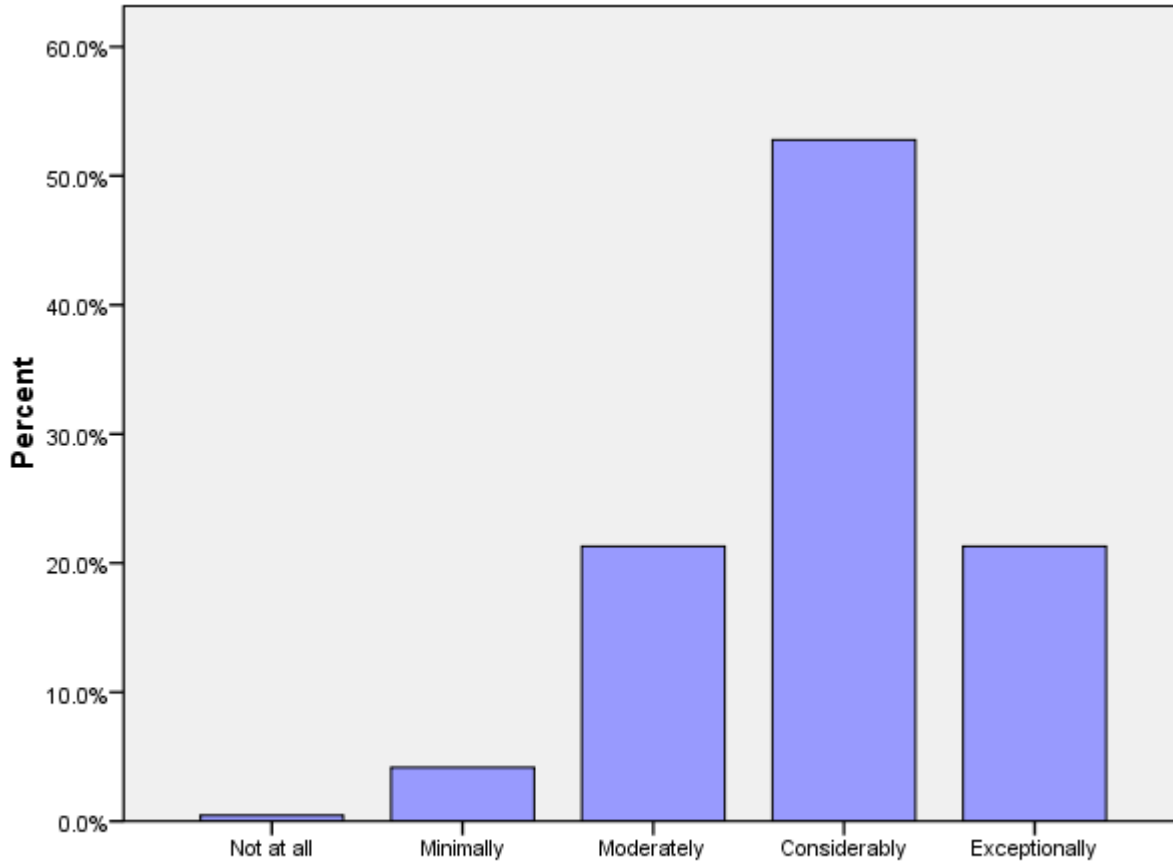


**J1d: How personally rewarding do you find your work with counterparts/community partners?**



**J1e: How personally rewarding do you find your experience with other HCNs?**

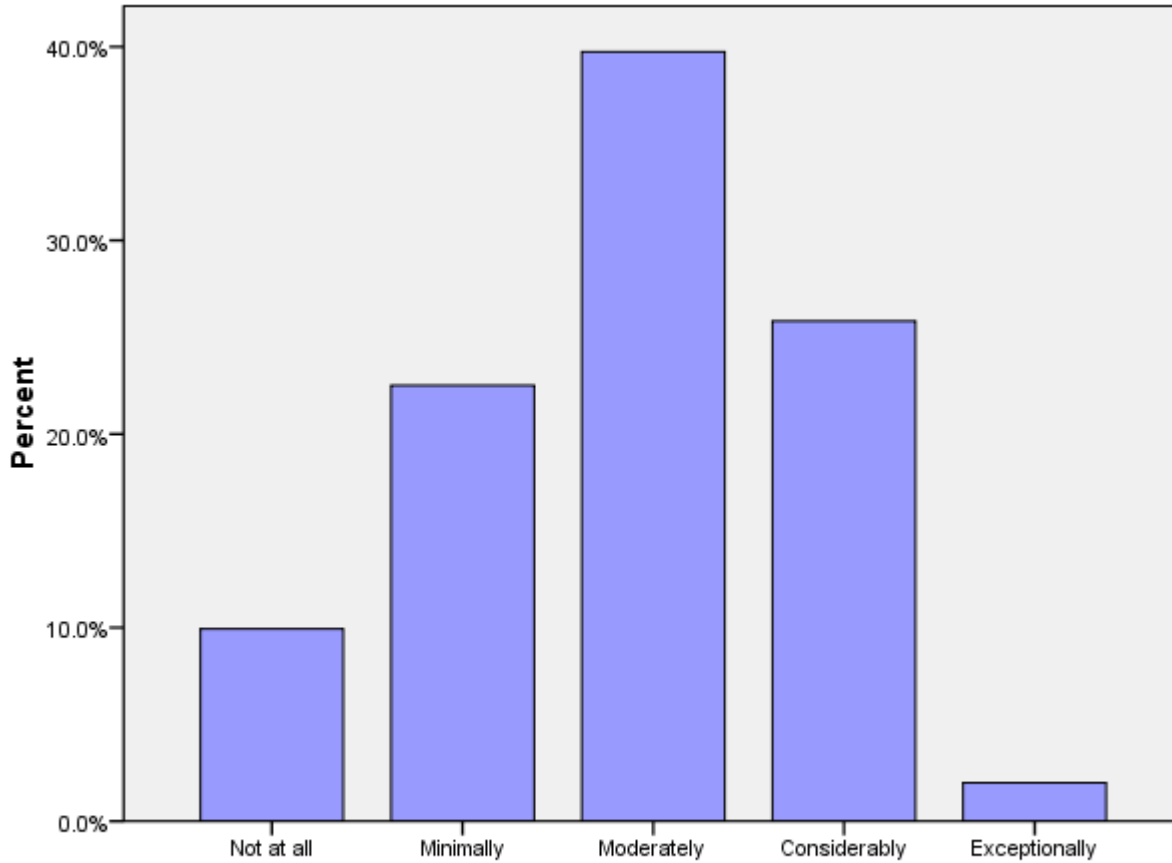
	Not at all	Minimally	Moderately	Considerably	Exceptionally	Total
J1E	0%	4%	21%	53%	21%	216



**J1e: How personally rewarding do you find your experience with other HCNs?**

**J2a (PCVs at post 9 months+ months): Please rate how well you think you achieved Goal 1.**

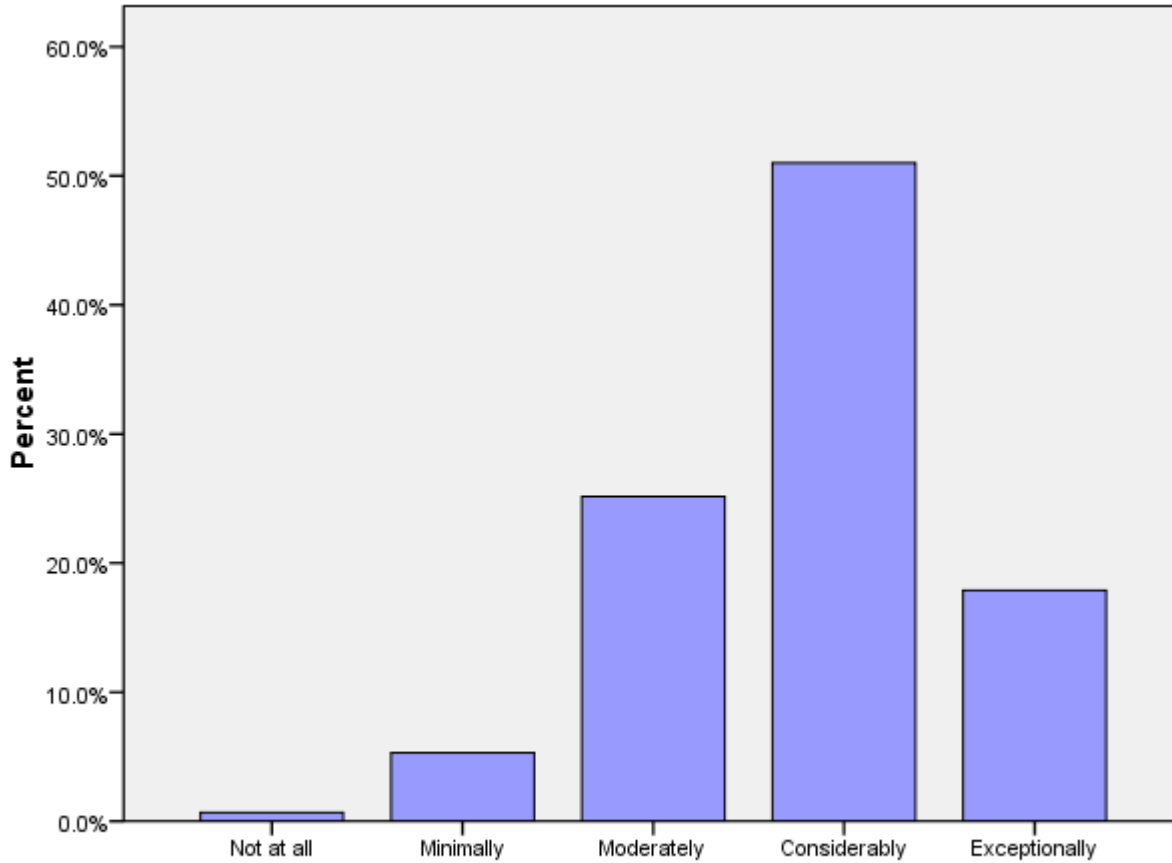
	Not at all	Minimally	Moderately	Considerably	Exceptionally	Total
J2A	10%	23%	40%	26%	2%	151



**J2a (PCVs at post 9 months+ months): Rate how well you think you achieved Goal 1.**

**J2b: (PCVs at post 9 months+ months): Please rate how well you think you achieved Goal 2.**

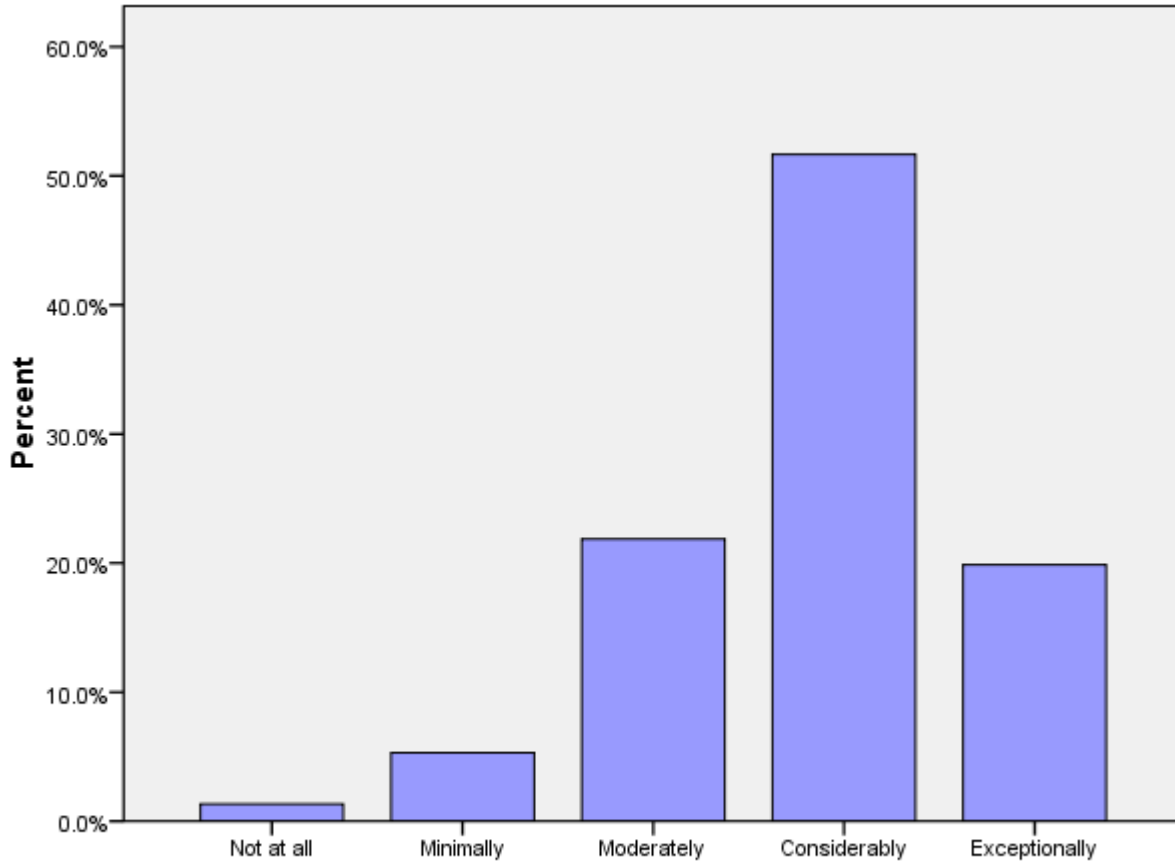
	Not at all	Minimally	Moderately	Considerably	Exceptionally	Total
J2B	1%	5%	25%	51%	18%	151



**J2b (PCVs at post 9 months+ months): Rate how well you think you achieved Goal 2.**

**J2c (PCVs at post 9 months+ months): Please rate how well you think you achieved Goal 3.**

	Not at all	Minimally	Moderately	Considerably	Exceptionally	Total
J2C	1%	5%	22%	52%	20%	151



**J2c (PCVs at post 9 months+ months): Please rate how well you think you achieved Goal 3.**

**J3: Today, would you make the same decision to join the Peace Corps?**

	No	Not likely	Possibly	Probably	Definitely	Total
J3	2%	2%	13%	21%	62%	217

**J4: Would you recommend Peace Corps service to others you think are qualified?**

	No	Not likely	Possibly	Probably	Definitely	Total
J4	1%	3%	12%	23%	61%	216

**J5: Do you intend to complete your Peace Corps service?**

	No	Not sure	Yes	Might extend	Total
J5	2%	4%	85%	9%	217

**J6: Would your host country benefit most if the Peace Corps program was---?**

	Discontinued	Reduced	Refocused/redesig ned	Maintained as is	Expanded	Total
J6	1%	8%	58%	20%	12%	216

## **K. Activities After Peace Corps Service**

*This section reports on Volunteers' plans for after they have completed their Peace Corps Service.*

### **K1a: What are your plans after your Peace Corps service? Work in government.**

Government			
In the U.S.	In your host country	In another country	N
100%	0%	14%	14

\* Percent of cases was used. Percentages will be greater than 100 since Volunteers were asked to select all that applied.

### **K1b: What are your plans after your Peace Corps service? Work in the private sector.**

Private Sector			
In the U.S.	In your host country	In another country	N
86%	10%	14%	21

\* Percent of cases was used. Percentages will be greater than 100 since Volunteers were asked to select all that applied.

### **K1c: What are your plans after your Peace Corps service? Work for an NGO.**

NGO			
In the U.S.	In your host country	In another country	N
83%	17%	0%	12

\* Percent of cases was used. Percentages will be greater than 100 since Volunteers were asked to select all that applied.

**K1d: What are your plans after your Peace Corps service? Work for PC Response.**

Peace Corps Response			
In the U.S.	In your host country	In another country	N
50%	0%	75%	4

\* Percent of cases was used. Percentages will be greater than 100 since Volunteers were asked to select all that applied.

**K1e: What are your plans after your Peace Corps service? Continue to participate in volunteer activities.**

Volunteer Activities			
In the U.S.	In your host country	In another country	N
86%	17%	21%	42

\* Percent of cases was used. Percentages will be greater than 100 since Volunteers were asked to select all that applied.

**K1f: What are your plans after your Peace Corps service? Graduate school/academic credentialing.**

Graduate School			
In the U.S.	In your host country	In another country	N
94%	0%	6%	34

\* Percent of cases was used. Percentages will be greater than 100 since Volunteers were asked to select all that applied.

**K1g: What are your plans after your Peace Corps service? Travel.**

Travel			
In the U.S.	In your host country	In another country	N
58%	13%	58%	38

\* Percent of cases was used. Percentages will be greater than 100 since Volunteers were asked to select all that applied.

**K1h: What are your plans after your Peace Corps service? Other.**

Other			
In the U.S.	In your host country	In another country	N
0%	50%	50%	2

\* Percent of cases was used. Percentages will be greater than 100 since Volunteers were asked to select all that applied.

**K2: How prepared do you feel to share your Peace Corps experience and knowledge of your host country with others in the United States when you return?**

	Not at all	Minimally	Moderately	Considerably	Total
How prepared do you feel to share your Peace Corps experience and knowledge of your host country with others in the United States when you return?	0%	7%	29%	64%	59

**K3: How well do you feel Peace Corps has prepared you for life in the U. S. after you return?**

	Not at all	Minimally	Moderately	Considerably	Exceptionally	Total
How well do you feel Peace Corps has prepared you for life in the U. S. after your return?	12%	14%	44%	22%	8%	59

**K6: Have your life/career goals changed because of your Peace Corps service?**

	No	Yes	Total
Have your life/career goals changed because of your Peace Corps service?	42%	58%	55



**K7: How well informed are you about the following opportunities for returned Volunteers:**

	Not informed	Somewhat informed	Well informed	N
Peace Corps Response	58%	37%	5%	60
Peace Corps' Fellows/USA program	20%	53%	27%	60
Noncompetitive eligibility	35%	48%	17%	60
RPCV Career Center in Washington, D.C.	60%	32%	8%	60
Returned Volunteer Services	62%	28%	10%	60

**K8: How did you first learn about the Fellows/USA program?**

Learn about Fellows/USA program	PC Website	60%
	From a recruiter	27%
	Word of mouth	20%
	Other	9%
	From staff in the host country's PC office	7%
	At post's information resource center	4%
	At IST	2%
	At COS Conference	2%
	University website	2%
	Hotline	0%
	At PST	0%
	Mid-service mailing from PC	0%
N	45	

\* Percent of cases was used. Percentages will be greater than 100 since Volunteers were asked to select all that applied.

**K9: Which of the following resources do you think will be helpful as you exit  
Peace Corps service?**

K9 Resources	Career Resource Manual	68%	
	RPCV career conferences	66%	
	Applying to federal government with RPCV noncompetitive eligibility	61%	
	Access to free job bulletins	61%	
	RPCV Handbook	59%	
	Electronic newsletter with job postings and career advice	54%	
	RPCV job search webinars	54%	
	List of RPCVs willing to talk to me about their careers	52%	
	Guide to speaking about my PC service to others (third goal)	46%	
	Connection with RPCVs through a mentoring program	45%	
	Self-assessment software (SIGI 3)	29%	
	NOT SURE	16%	
	Other	2%	
	N		56

\* Percent of cases was used. Percentages will be greater than 100 since Volunteers were asked to select all that applied.

**K10: Which of the following third goal (helping promote a better understanding of peoples on the part of Americans) activities do you plan to do when you return to the U. S.?**

K10 Third Goal	Continue with volunteerism and service learning	86%	
	Join a RPCV group	72%	
	Speak to a group of adults about my experience	67%	
	Speak to school age children about my experience	58%	
	Write stories from my PC service on my own	53%	
	Participate in PC Week	33%	
	Obtain and use PC third goal resources	25%	
	Write stories from my PC service in conjunction with CWWS	5%	
	Other	5%	
	NOT SURE	5%	
	N		57

\* Percent of cases was used. Percentages will be greater than 100 since Volunteers were asked to select all that applied.