



**Peace Corps Volunteer
2009 Annual Volunteer Survey**

**Philippines
October 13, 2009**

Office of Strategic Information, Research and Planning

Table of Contents

Introduction to the 2009 Annual Volunteer Survey Report	3
Overview of the Post's 2009 Volunteer Survey Respondents.....	4
A. Applying to the Peace Corps.....	7
B. Preparation for the Peace Corps.....	7
C. Your Peace Corps Assignment	8
D. Training for Peace Corps Assignment	15
E. Volunteer Assignment Goals and Impact.....	18
F. Peace Corps Support.....	28
G. Your Safety and Security	34
H. Volunteers Working in HIV/AIDS	43
I. Your Life in the Peace Corps	44
J. Overall Assessment of Peace Corps Service	49
K. Activities After Peace Corps Service.....	58

Introduction to the 2009 Annual Volunteer Survey Report

This country report contains the tables and charts from the Volunteers in your country who completed the 2009 Annual Volunteer Survey (AVS). The results provide a picture of the activities, experiences and views of Peace Corps Volunteers in 2009. The results show areas where Volunteers' needs are met and identify areas where improvements may be needed. The survey was fielded from May through August 2009.

A core set of questions was asked of all Volunteers. For the first time, Volunteers were also asked a series of questions relevant to their time in country:

- Volunteers in country 8 or less months were asked about applying to and preparing for the Peace Corps.
- Volunteers in country 18 or less months were asked about the effectiveness of their pre-service training (PST).
- Volunteers in country 19 or more months were asked about their post-service plans, as well as the Peace Corps' resources for their post-service transition.

Tables and graphs are labeled by survey section and the survey question. The tables show the percent of post respondents that selected each choice and the total number of post respondents that answered the question. The number of responses for each question will vary, depending on:

- whether the question was asked of all Volunteers or only the Volunteers in-country a certain number of months and
- how many of the Volunteers who were "eligible" to answer the question did respond.

Most survey questions asked respondents to select only one from a set of choices. The percentages for the "select one" responses add up to 100 percent. Other questions asked Volunteers to "mark all that apply" in situations, for example, where it is likely that respondents are involved in more than one secondary activity. The percentages of the "mark all that apply" responses will total more than 100 percent; each percentage equals the number of respondents selecting that choice divided by the number of respondents who answered the question.

Posts are encouraged to compare these 2009 results with the 2006 and 2008 survey results to note trends and changes over time. Because questions are revised from one survey to the next, a crosswalk between the 2008 and 2009 questions is posted on the OSIRP intranet page under 2009 AVS Reports "Reference Documents." The earlier 2008 survey global, regional and post reports are also posted on the OSIRP Intranet page.

Volunteers' extensive narrative responses to the 29 open-ended questions on the survey are in the post's 2009 Annual Volunteer Survey Open Ended Responses report. All Volunteers' narrative responses to key questions will be analyzed for global themes and presented in a later report.

The number of surveys for each post includes surveys submitted online by Volunteers and completed paper surveys sent to the Peace Corps headquarters for hand-entry into the online survey system. The final count may include mostly completed partial surveys added to the final dataset after the survey closed.

Overview of the Post's 2009 Volunteer Survey Respondents

This overview presents basic information about the characteristics of Volunteers who completed the 2009 Annual Volunteer Survey at post.

Completed Surveys by Months in Country

	8 months or less		9 to 18 months		19 months or more		Total	
	Number	Percent	Number	Percent	Number	Percent	Number	Percent
Months3grp			54	52%	50	48%	104	100%

L1: What is your age?

	20-29	30-49	50+	Total
AGE3grp	85%	10%	5%	99

L2: What is your gender?

	Female	Male	Total
GENDER	62%	38%	98

Completed surveys by project.

	Count	Column N %
Coastal Resources Management	31	30%
Children, Youth & Families (CYF)	27	26%
English Education	43	41%
Other. Please specify	3	3%
Total	104	100%

C2: Which best describes the focus of your primary assignment/work?

		Percent	Number
C2	English teaching	38%	39
	Youth development	20%	21
	Environmental education	12%	13
	Agriculture/fish/livestock	11%	11
	Information & communications technology (ICT)	5%	5
	Other: Please specify	3%	3
	Urban & regional planning/municipal development	2%	2
	Other education	2%	2
	Teacher training	2%	2
	NGO development	2%	2
	Community development	2%	2
	Water sanitation	1%	1
	Agroforestry	1%	1
	Business education/advising		
	HIV/AIDS		
	Health extension		
	Forestry/parks		
	Math/science teaching		
	Total	100%	104

C2.TEXT: Which of the following initiatives does your primary work include? Other (specify)

	PERCENT	NUMBER
C2.TEXT	Open-ended results. Not responsive to request.	
Total	100%	104

A. Applying to the Peace Corps

This section reports Volunteers' motivations in applying and accepting a Peace Corps assignment.

B. Preparation for the Peace Corps

This section reports on Volunteers' assessment of the materials and information available before their service.

Sections A and B are only completed by Volunteers who have been in country less than 9 months. No Volunteers in the Philippines reported they had been in country 8 months or less.

C. Your Peace Corps Assignment

This section reports Volunteers' primary assignment work and secondary activities. The term "primary assignment" refers to the Volunteers' assignment which is part of an overall project plan designed by your host country partners and in-country Peace Corps staff.

C3: Which of the following activities does your primary assignment/work include? Mark all that apply.

	PCV Responses	% Involved in Initiative	Total PCVs Responding
\$C3PrmAct English teaching	57	55%	
Working with youth	51	49%	
Literacy	47	45%	
Environment work	33	32%	
Natural resources management	32	31%	
Working with NGO(s)	28	27%	
Biodiversity conservation	25	24%	
Working with special groups (e.g., disabled, elderly, ethnic minorities, orphans)	21	20%	
Income generation	17	16%	
Library development	16	15%	
World Wise Schools/ Correspondence Match	16	15%	
Arts	13	12%	
Girls' education	13	12%	
HIV/AIDS	12	12%	
Other: Please specify	12	12%	
Information and communications technology (ICT)	11	11%	
Nutrition education	11	11%	
Community food security (production/marketing)	10	10%	
Child survival	9	9%	

Rural development	9	9%	
Mobilize host country nationals (HCNs) to volunteer	7	7%	
Sports/fitness	7	7%	
Urban development/municipal development	6	6%	
Household food security	5	5%	
Water and sanitation	5	5%	
WID/GAD	5	5%	
Microenterprise development	3	3%	
Business advertising	2	2%	
Total			104

Percents may total to more than 100% since Volunteers were asked to "Mark all that apply."

C3: Which of the following activities does your primary assignment/work include? Other (specify)

	Column N %	Count	Row N %
C3.OTHER.TEXT			
Open-ended results. Not responsive to request.			
Total		104	100%

C4: Hours Spent on Primary Assignment During Average Work Week

	None	1-10 hrs	11-20 hrs	21-30 hrs	31-40 hrs	More than 40 hrs	Total
C4Hrs6grp		5%	25%	33%	29%	7%	102

C4: How many hours do you spend on your primary assignment during an average work week?

	All Volunteers	Average	Lowest reported	Highest reported	Did not answer
C4	104	28.7	2	55	2

C5: Which of the following do your secondary activities (other than your primary assignment work) include? Mark all that apply.

		PCV Responses	% Involved in Initiative	Total PCVs Responding
\$C5SecAct	Working with youth	44	49%	
	HIV/AIDS	37	41%	
	Library development	25	28%	
	Environment work	20	22%	
	Literacy	19	21%	
	Working with NGO(s)	18	20%	
	Sports/fitness	17	19%	
	English teaching	16	18%	
	Working with special groups (e.g., disabled, elderly, ethnic minorities, orphans)	16	18%	
	Girls' education	13	14%	
	Other: Please specify	13	14%	
	Income generation	12	13%	
	Information and communications technology (ICT)	11	12%	
	WID/GAD	11	12%	
	Arts	10	11%	
	Natural resources management	9	10%	
	Nutrition education	9	10%	
	Urban development/municipal development	9	10%	
	Rural development	8	9%	
	Water and sanitation	8	9%	
World Wise Schools/ Correspondence Match	8	9%		
Business advertising	5	6%		

Mobilize host country nationals (HCNs) to volunteer	5	6%	
Biodiversity conservation	4	4%	
Child survival	3	3%	
Community food security (production/marketing)	2	2%	
Microenterprise development	2	2%	
Household food security			
Total			90

Percents may total to more than 100% since Volunteers were asked to "Mark all that apply."

C5: Which of the following do your secondary activities include? Other (specify)

	Column N %	Count	Row N %
C5.OTHER.TEXT			
Open-ended results. Not responsive to request.			
Total		104	100%

C5: No Secondary Activities

		Percent	Number
C5.NONE	No	90%	94
	Yes, I have no secondary activities	10%	10
	Total	100%	104

C6: Hours Spent on Secondary Activities During Average Work Week

	None	1-10 hrs	11-20 hrs	21-30 hrs	31-40 hrs	More than 40 hrs	Total
C6Hrs6grp		68%	23%	8%			95

C6. How many hours do you spend on secondary activities during an average work week?

	All Volunteers	Average	Lowest reported	Highest reported	Did not answer
C6	104	10.6	1	30	9

C7: How personally satisfying is your--?

	Not at all 1	2	3	4	Exceptionally 5	Total
Primary assignment	6%	18%	23%	38%	14%	104
Secondary project/activities	6%	10%	13%	36%	34%	99

D. Training for Peace Corps Assignment

This section reports Volunteers' assessments of the effectiveness of their Pre-Service Training and In-Service Training at post. In-Service Training (IST) includes: Reconnect; Technical IST; Mid-Service and Close of Service conferences; project management/leadership conferences; and other post-sponsored training sessions.

D1: (PCVs at post 18 months or less) How effective was your Pre-Service Training (PST) in preparing you to--

	Not effective	Poor	Adequate	Effective	Very Effective	NA/No training	Total
Manage cultural differences		4%	37%	43%	17%		54
Deal with adjustment issues		11%	31%	44%	13%		54
Work with counterparts/community partners	2%	30%	32%	28%	8%		53
Use language needed in work and social interactions	4%	13%	33%	30%	20%		54
Perform technical aspects of your work	15%	33%	30%	15%	7%		54
Work on your project goals and objectives	6%	13%	44%	24%	13%		54
Conduct a participatory community needs assessment (e.g., PACA)	6%	22%	31%	26%	15%		54
Monitor your project goals and outcomes	4%	15%	47%	25%	9%		53
Maintain your physical health	2%	4%	20%	46%	26%	2%	54
Maintain your mental/emotional health	2%	9%	28%	44%	15%	2%	54
Maintain your personal safety and security	2%		9%	51%	38%		53

D5: How effective was your In-Service Training (IST) in preparing you to--

	Not effective	Poor	Adequate	Effective	Very Effective	NA/No training	Total
Manage cultural differences	1%	3%	38%	39%	7%	12%	98
Deal with adjustment issues	1%	4%	35%	44%	4%	12%	98
Build and strengthen working relationships with counterparts/community partners	1%	5%	32%	43%	14%	5%	98
Use language needed in work and social interactions	3%	6%	28%	40%	19%	4%	98
Perform technical aspects of your work	3%	11%	38%	33%	11%	4%	98
Work on your project goals and objectives	2%	3%	29%	46%	16%	3%	95
Conduct a participatory community needs assessment (e.g.,PACA)	3%	8%	32%	26%	6%	26%	98
Monitor project goals and outcomes	3%	2%	35%	42%	11%	6%	97
Maintain your physical health		4%	19%	40%	23%	13%	98
Maintain your mental/emotional health	2%	3%	26%	33%	23%	13%	98
Maintain your personal safety and security			22%	40%	29%	9%	98

D8: Did you have this skill before joining the Peace Corps?

	No/ No answer	Yes	Total
Skills specific to my assignment	45	59	104
Assessing community needs	74	29	103
Organizing/implementing community activities	48	55	103
Building capacity of local organizations	79	23	102
Monitoring, reporting, and evaluating my work	25	79	104
Designing and implementing training sessions	58	46	104

D8: Is the skill needed for your Peace Corps work?

	No/ No answer	Yes	Total
Skills specific to my assignment	3	100	103
Assessing community needs	13	89	102
Organizing/implementing community activities	9	93	102
Building capacity of local organizations	16	86	102
Monitoring, reporting, and evaluating my work	2	99	101
Designing and implementing training sessions	6	97	103

D8: Have you had adequate Peace Corps training to acquire the skill?

	No/ No answer	Yes	Total
Skills specific to my assignment	25	62	87
Assessing community needs	13	77	90
Organizing/implementing community activities	10	77	87
Building capacity of local organizations	35	54	89
Monitoring, reporting, and evaluating my work	19	67	86
Designing and implementing training sessions	28	65	93

E. Volunteer Assignment Goals and Impact

This section reports Volunteers' self-assessments of their impact on the individuals and organizations in the communities in which they serve. At the end of this section, Volunteers' third goal activities, participation in Coverdell World Wise School/Correspondence Match (CWWS/CM) and use of Peace Corps resources to support their work are reported in questions.

E1: To what extent does your Volunteer work assignment address the following?

	Not at all 1	2	3	4	Exceptionally 5	NA	Total
Meets the objectives of the project plan	2%	12%	39%	35%	12%	1%	104
Builds local capacity for sustainability	8%	24%	27%	32%	9%	1%	104
Involves local people in planning and implementing activities	5%	8%	33%	38%	14%	2%	104
Complements other local development activities	9%	12%	29%	33%	15%	3%	104
Transfers skills to host country individuals and organizations	6%	9%	31%	37%	18%		104
Mobilizes host country nationals (HCNs) to volunteer	25%	26%	22%	15%	7%	6%	102
Helps promote a better understanding of Americans on the part of the peoples served (goal 2)	1%	3%	20%	31%	44%	1%	104
Helps promote a better understanding of other peoples on the part of Americans (goal 3)	3%	7%	21%	28%	39%	2%	104

E2: To what extent does your host community--?

	Not at all 1	2	3	4	Exceptionally 5	NA	Total
Need the assistance that you provided		16%	34%	28%	20%	2%	50
Want the assistance that you provided		8%	16%	36%	38%	2%	50

E3: How much impact does your assignment have on the capacities of your host counterparts/community partners?

	None 1	2	3	4	Exceptional 5	NA	Total
Ability to access information (e.g., library, Internet, etc.)	10%	12%	19%	35%	21%	4%	102
Leadership skills	8%	9%	36%	38%	7%	4%	104
Planning and management	5%	11%	33%	38%	10%	4%	104
Problem solving/critical thinking	8%	11%	34%	38%	10%	1%	104
Self-esteem	5%	7%	37%	27%	18%	7%	104
Technical skills	6%	8%	30%	43%	11%	3%	103
Use of local resources	6%	16%	30%	36%	13%		103
Use of external resources (e.g., grants, international NGOs)	12%	8%	24%	31%	19%	6%	104
Better understanding of Americans	1%	2%	20%	33%	43%	1%	104
Other: Please specify below	3%			6%	3%	88%	34

E3: How much impact does your assignment have on the capacities of your host counterparts/community partners? Other (specify)

	Column N %	Count	Row N %
E3_OTHER	Open-ended results. Not responsive to request.		
Total		104	100%

E4: How much impact does your assignment have on the capacities of your host individuals with whom you work?

	None 1	2	3	4	Exceptional 5	NA	Total
Ability to access information (e.g., library, Internet, etc.)	9%	14%	26%	37%	11%	4%	104
Leadership skills	5%	11%	32%	39%	11%	3%	103
Planning and management	9%	20%	37%	20%	9%	5%	103
Problem solving/critical thinking	4%	13%	34%	36%	13%	1%	103
Self-esteem		7%	30%	38%	21%	4%	104
Technical skills	6%	15%	27%	41%	8%	4%	103
Use of local resources	8%	14%	37%	25%	9%	8%	104
Use of external resources (e.g., grants, international NGOs)	16%	19%	23%	20%	9%	13%	103
Better understanding of Americans		4%	15%	38%	40%	2%	104
Other: Please specify below	3%			10%	7%	79%	29

E4: How much impact does your assignment have on the capacities of your host individuals with whom you work? Other (specify)

	Column N %	Count	Row N %
E4_OTHER	Open-ended results. Not responsive to request.		
Total		104	100%

E5: To what extent does your assignment enhance the capacities of organizations with whom you work?

	None 1	2	3	4	Exceptional 5	NA	Total
Identifying and prioritizing organizational needs	10%	16%	32%	33%	8%	2%	104
Leadership	11%	18%	33%	25%	6%	7%	103
Management	12%	19%	37%	22%	7%	4%	102
Monitoring and evaluation	12%	14%	39%	25%	7%	3%	104
Planning and implementing organizational activities	6%	14%	34%	33%	9%	5%	104
Teamwork/participatory decision-making	10%	11%	35%	35%	7%	4%	104
Use of local resources	7%	18%	37%	28%	9%	2%	104
Ability to mobilize, manage, and sustain local volunteers	19%	19%	28%	18%	7%	9%	104
Other: Please specify below	4%			4%		93%	27

E5: To what extent does your assignment enhance the capacities of organizations with whom you work? Other (specify)

	Column N %	Count	Row N %
E5_OTHER	Open-ended results. Not responsive to request.		
Total		104	100%

E6: How effective have you been in transferring knowledge and skills to help the following persons or groups build their capacities?

	Not at all 1	2	3	4	Exceptionally 5	NA	Total
Your counterpart/community partner	4%	13%	25%	39%	18%		104
Another institution/organization	7%	18%	28%	30%	7%	11%	104
Members of your host community	5%	19%	36%	28%	11%	1%	103
Other: Please specify below				4%	7%	89%	28

E7: To what extent have HC individuals gained a better understanding of Americans? Includes "Too early to tell."

	Not at all	Minimally	Moderately	Considerably	Exceptionally	Too early to tell	Total
E7	0%	1%	24%	47%	26%	2%	104

E7: To what extent have HC individuals gained a better understanding of Americans? Excludes "Too early to tell."

	Not at all	Minimally	Moderately	Considerably	Exceptionally	Total
E7		1%	25%	48%	26%	102

E9. In which of the following third goal activities have you participated during your PC service?

		PCV Responses	% Doing This	Total PCVs Responding
\$E9Goal3Acts	Electronic updates	86	83%	
	Hosting American visitors	65	63%	
	Personal website or blog	47	46%	
	Hard copy/paper update	43	42%	
	Enrollment in the CWWS/CMS program	40	39%	
	Pen pal program/letter exchange	19	18%	
	While on home leave, spoke at a school or community group	14	14%	
	Podcasted/created a slide show or video posted online	9	9%	
	Other please specify	5	5%	
	Peace Corps Week activities	3	3%	
	Total			

Percents may total to more than 100% since Volunteers were asked to "Mark all that apply."

E9: When asked about third goal activities, Volunteer answered "No involvement in third goal activities."

	Have done third goal activities	No third goal activities	Total
Peace Corps' third goal is to "help promote a better understanding of other peoples on the part of Americans." In which of the following third goal activities, including your contact with family and friends, have you participated during your Peace Corps	99%	1%	104

E10: Would you recommend participation in the CWWS CMS to other Volunteers?

	I have not participated in CWWS/CM.	I have participated in CWWS/CM & would recommend it	I have participated in CWWS/CM and would NOT recommend it	Total
E10	55%	34%	11%	102

E11: To what extent have Americans gained a better understanding of HCNs? Includes "Too early to tell."

	Not at all	Minimally	Moderately	Considerably	Exceptionally	Too early to tell	Total
E11	0%	4%	32%	38%	20%	6%	103

E11: To what extent have Americans gained a better understanding of HCNs? Excludes "Too early to tell."

	Not at all	Minimally	Moderately	Considerably	Exceptionally	Total
E11		4%	34%	40%	22%	97

E12: Which of the following resources have been useful to you in your third goal activities?

	Yes
Coverdell World Wise Schools staff (Useful)	22
Contact with other Peace Corps staff in Washington, D.C. (Useful)	9
Information at staging (Useful)	48
Information from your post sent to you before departure (Useful)	48
Internet (Useful)	88
Invitation kits (Useful)	50
Material in staging packet (Useful)	52
Peace Corps staff at post (e.g., World Wise School contact) (Useful)	47
Recruiting (Useful)	43
Resources available from Coverdell World Wise Schools (Useful)	19
Resources available on Peace Corps website (e.g., third goal section) (Useful)	35
Training on third goal (Useful)	26
Other: Please specify below (Useful)	4

E12: Which of the following resources would/will be helpful to you in your third goal activities?

	Yes
Coverdell World Wise Schools staff (Would be helpful)	31
Contact with other Peace Corps staff in Washington, D.C. (Would be helpful)	35
Information at staging (Would be helpful)	10
Information from your post sent to you before departure (Would be helpful)	15
Internet (Would be helpful)	11
Invitation kits (Would be helpful)	4
Material in staging packet (Would be helpful)	4
Peace Corps staff at post (e.g., World Wise School contact) (Would be helpful)	9
Recruiting (Would be helpful)	13
Resources available from Coverdell World Wise Schools(Would be helpful)	22
Resources available on Peace Corps website (e.g., third goal section) (Would be helpful)	22
Training on third goal (Would be helpful)	30
Other: Please specify below (Would/will be helpful)	3

E12: Other useful/helpful resources? Other (specify)

	Column N %	Count	Row N %
E12_OTHER	Open-ended results. Not responsive to request.		
Total		104	100%

E13: Do you know about the Peace Corps Partnership Program (PCPP)?

	No	Yes, but I haven't used it.	Yes, I have used it.	Total
E13	31%	55%	14%	104

F. Peace Corps Support

This section reports Volunteers' assessments of in-country Peace Corps.

F2: How satisfied are you with the health care you received from your PCMO(s)?

	Not at all	Minimally	Adequately	Considerably	Exceptionally	Not Used	Total
F2	1%	3%	18%	35%	43%		104

F3: How satisfied are you with the following support provided by in-country PC staff?

	Not at all 1	2	3	4	Completely 5	NA	Total
Administrative/logistical	2%	1%	17%	38%	41%		104
Cross-cultural		3%	24%	36%	36%	1%	103
Emotional	3%	7%	22%	37%	28%	4%	104
Feedback on my work reports	11%	20%	29%	24%	11%	6%	104
Job assignment	1%	16%	26%	35%	22%		104
Language learning	5%	13%	21%	41%	18%	1%	104
Medical		5%	16%	35%	44%		104
Safety and security			12%	34%	55%		104
Site selection/preparation	5%	12%	26%	33%	24%		104
Technical skills	9%	17%	36%	30%	7%	1%	103

F4: How satisfied are you with the Peace Corps allocation of time and resources to mental health/adjustment issues?

	Not at all satisfied 1	2	3	4	Completely satisfied 5	Total
F4	6%	8%	32%	30%	25%	104

F5: What level of PC support have you received to help cope with stress from issues such as HIV/AIDS, food insecurity, etc. in your community? (Including PCVs w/no need for support)

	No support	Minimal support	Adequate support	Considerable support	Exceptional support	NA / I have no need for support	Total
F5	3%	8%	14%	12%	8%	56%	103

F5: What level of PC support have you received to help cope with stress from issues such as HIV/AIDS, food insecurity, etc. in your community? (Excluding PCVs w/no need for support)

	No support	Minimal support	Adequate support	Considerable support	Exceptional support	Total
F5	7%	18%	31%	27%	18%	45

F6: How would you rate your interaction with the Country Director in terms of the following?

	Not adequate	Adequate	Total
Responsiveness to my issues	2%	98%	102
Informative content	1%	99%	102
My comfort level discussing issues	4%	96%	102
Adequacy of visits	8%	92%	103

F6b: How would you rate your interaction with the PTO/SRPTC in terms of the following?

	Not adequate	Adequate	Total
Responsiveness to my issues	6%	94%	100
Informative content	4%	96%	100
My comfort level discussing issues	15%	85%	100
Adequacy of visits	7%	93%	98

F6c: How would you rate your interaction with the APCD/Program Manager in terms of the following?

	Not adequate	Adequate	Total
Responsiveness to my issues	7%	93%	95
Informative content	12%	88%	95
My comfort level discussing issues	11%	89%	97
Adequacy of visits	9%	91%	95

F6d: How would you rate your interaction with the PCMO in terms of the following?

	Not adequate	Adequate	Total
Responsiveness to my issues	8%	92%	103
Informative content	2%	98%	103
My comfort level discussing issues	5%	95%	104
Adequacy of visits	6%	94%	101

F6e: How would you rate your interaction with the Safety and Security Coordinator in terms of the following?

	Not adequate	Adequate	Total
Responsiveness to my issues	2%	98%	101
Informative content	1%	99%	103
My comfort level discussing issues	1%	99%	103
Adequacy of visits	4%	96%	101

F6f: How would you rate your interaction with the Training Manager in terms of the following?

	Not adequate	Adequate	Total
Responsiveness to my issues	8%	92%	99
Informative content	7%	93%	99
My comfort level discussing issues	7%	93%	100
Adequacy of visits	8%	92%	98

F6g: How would you rate your interaction with administrative staff in terms of the following?

	Not adequate	Adequate	Total
Responsiveness to my issues	2%	98%	104
Informative content	2%	98%	104
My comfort level discussing issues	2%	98%	102
Adequacy of visits	1%	99%	100

F6h: How would you rate your interaction with other post staff (please specify) in terms of the following?

	Not adequate	Adequate	Total
Responsiveness to my issues	12%	88%	17
Informative content	12%	88%	16
My comfort level discussing issues	12%	88%	17
Adequacy of visits	7%	93%	15

F7: To what extent is your CD aware of Volunteer issues and concerns through interactions with Volunteers?

	Not at all	Minimally	Adequately	Considerably	Completely	Total
F7		5%	17%	44%	35%	103

F8: What is the most effective way you use to communicate with PC staff?

Most effective	Text messaging	62%	64
	Cellphone (voice)	23%	24
	Email/ Internet	9%	9
	In-person visits	6%	6
	Other. Please specify		
	Telephone not at residence or work		
	Telephone at residence or work		
	Letters		
	CB radio		
	Total	100%	103

F8: What is the second most effective way you use to communicate with PC staff?

Second most effective	Cellphone (voice)	39%	41
	Email/ Internet	29%	30
	Text messaging	25%	26
	In-person visits	5%	5
	Telephone not at residence or work	1%	1
	Telephone at residence or work	1%	1
	Other. Please specify		
	Letters		
	CB radio		
	Total	100%	104

F8: What is the third most effective way you use to communicate with PC staff?

(C11_THREE) Third most effective	Email/ Internet	55%	56
	Cellphone (voice)	26%	27
	In-person visits	9%	9
	Text messaging	8%	8
	Other. Please specify	1%	1
	Letters	1%	1
	Telephone not at residence or work		
	Telephone at residence or work		
	CB radio		
	Total	100%	102

F9: How do you rate the effectiveness of your communication resources for contacting in-country PC staff?

	Very poor	Poor	Adequate	Good	Excellent	Total
F9	1%		9%	32%	59%	104

G. Your Safety and Security

This section reports on how safe and informed about their safety Volunteers feel. Their experiences with reported and unreported crimes are summarized.

G1: How safe do you feel...?

	Not at All Safe	Often Safe	Adequately Safe	Usually Safe	Very Safe	Total
Where you live		3%	5%	29%	63%	103
Where you work			4%	20%	76%	102
When you travel in-country		4%	14%	48%	34%	102
City where main Peace Corps office is located		16%	22%	34%	29%	101

G2: Please indicate the number of times you experienced the following types of discrimination/harassment.

	Never	Once	2-5 times	6-10 times	11-25 times	26+ times	Total
Age	93.1%		5.6%	1.4%			72
Anti-American	75.0%	7.9%	11.8%		1.3%	3.9%	76
Disability	97.3%		2.7%				73
Gender	84.1%		5.8%	2.9%	1.4%	5.8%	69
Racial/color	77.8%		4.2%	2.8%	8.3%	6.9%	72
Religious	88.7%	1.4%	1.4%	4.2%	2.8%	1.4%	71
Sexual (verbal)	67.1%	5.5%	4.1%	2.7%	11.0%	9.6%	73
Sexual (physical)	89.2%	5.4%	5.4%				74
Sexual orientation	93.1%		4.2%		1.4%	1.4%	72

G2: Please indicate the number of times you reported discrimination/harassment events to PC.

	Never	Once	2-5 times	6-10 times	11-25 times	26+ times	Total
Age	50.0%	16.7%	33.3%				6
Anti-American	94.1%	5.9%					17
Disability			100.0%				1
Gender	100.0%						9
Racial/color	100.0%						17
Religious	100.0%						7
Sexual (verbal)	91.3%	4.3%	4.3%				23
Sexual (physical)	62.5%	25.0%	12.5%				8
Sexual orientation	100.0%						4

G3: Please indicate the number of times you experienced the following types of crimes.

	Never	Once	2-5 times	6-10 times	11-25 times	26+ times	Total
Burglary	83.1%	6.5%	10.4%				77
Theft	48.3%	36.0%	13.5%	1.1%	1.1%		89
Robbery	93.3%	6.7%					75
Physical assault	97.3%	2.7%					73
Aggravated assault	100.0%						72
Sexual assault	94.5%	4.1%	1.4%				73
Rape	100.0%						72

G3: Please indicate the number of times you reported the following crimes to Peace Corps.

	Never	Once	2-5 times	6-10 times	11-25 times	26+ times	Total
Burglary	33.3%	50.0%	16.7%				12
Theft	24.4%	62.2%	13.3%				45
Robbery	20.0%	80.0%					5
Physical assault	100.0%						2
Sexual assault	50.0%	25.0%	25.0%				4

G4a: If you did not report your experience with burglary, please your reason(s) for not reporting.

		PCV Responses	% Reason Not Rptd	Total PCVs Responding
\$NoRpBurg	I did not think the PC could help	3	38%	
	I felt it was too minor or common to report	3	38%	
	Other	3	38%	
	It might hurt my relationship with the community	2	25%	
	I believed it could result in changing sites			
	Concerns of a possible breach in confidentiality			
	Reporting might result in disciplinary action against me			
	Total			

*Percents may total to more than 100% since Volunteers were asked to "mark all that apply."

G4b: If you did not report your experience with theft, please your reason(s) for not reporting.

		PCV Responses	% Reason Not Rptd	Total PCVs Responding
\$NoRpTheft	I felt it was too minor or common to report	11	61%	
	I did not think the PC could help	8	44%	
	It might hurt my relationship with the community	2	11%	
	Reporting might result in disciplinary action against me	1	6%	
	Other	1	6%	
	I believed it could result in changing sites			
	Concerns of a possible breach in confidentiality			
	Total			

*Percents may total to more than 100% since Volunteers were asked to "mark all that apply."

G4c: If you did not report your experience with robbery, please your reason(s) for not reporting.

		PCV Responses	% Reason Not Rptd	Total PCVs Responding
\$NoRpRobb	I did not think the PC could help	2	67%	
	I felt it was too minor or common to report	1	33%	
	Other	1	33%	
	I believed it could result in changing sites			
	Concerns of a possible breach in confidentiality			
	Reporting might result in disciplinary action against me			
	It might hurt my relationship with the community			
	Total			

*Percents may total to more than 100% since Volunteers were asked to "mark all that apply."

G4d: If you did not report your experience with physical assault, please your reason(s) for not reporting.

		PCV Responses	% Reason Not Rptd	Total PCVs Responding
\$NoRpPhAs	I believed it could result in changing sites	1	33%	
	I felt it was too minor or common to report	1	33%	
	Other	1	33%	
	I did not think the PC could help			
	Concerns of a possible breach in confidentiality			
	Reporting might result in disciplinary action against me			
	It might hurt my relationship with the community			
	Total			

*Percents may total to more than 100% since Volunteers were asked to "mark all that apply."

G4: If you did not report your experience with aggravated assault, please your reason(s) for not reporting.

	PCV Responses	% Reason Not Rptd	Total PCVs Responding
\$NoRpAgAs Other	1	100%	
I did not think the PC could help			
I believed it could result in changing sites			
I felt it was too minor or common to report			
Concerns of a possible breach in confidentiality			
Reporting might result in disciplinary action against me			
It might hurt my relationship with the community			
Total			1

*Percents may total to more than 100% since Volunteers were asked to "mark all that apply."

G4e: If you did not report your experience with sexual assault, please your reason(s) for not reporting.

	PCV Responses	% Reason Not Rptd	Total PCVs Responding
\$NoRpSxAs I felt it was too minor or common to report	2	50%	
Other	2	50%	
It might hurt my relationship with the community	1	25%	
I did not think the PC could help			
I believed it could result in changing sites			
Concerns of a possible breach in confidentiality			
Reporting might result in disciplinary action against me			
Total			

*Percents may total to more than 100% since Volunteers were asked to "mark all that apply."

G4f: If you did not report your experience with rape, please your reason(s) for not reporting.

	PCV Responses	% Reason Not Rptd	Total PCVs Responding
\$NoRpRape Other	1	100%	
I did not think the PC could help			
I believed it could result in changing sites			
I felt it was too minor or common to report			
Concerns of a possible breach in confidentiality			
Reporting might result in disciplinary action against me			
It might hurt my relationship with the community			
Total			1

*Percents may total to more than 100% since Volunteers were asked to "mark all that apply."

H. Volunteers Working in HIV/AIDS

This section reports Volunteers' involvement in HIV/AIDS and their perceived effectiveness of their HIV/AIDS related activities.

H1: Which of the following best describes your involvement in HIV/AIDS activities?

	HIV/AIDS work is my primary assignment.	HIV/AIDS work is part of my secondary activities.	Involved in HIV/AIDS efforts, not primary/secondary work	Not involved in any HIV/AIDS related activities	Total
H1		33%	29%	39%	101

H2: How well has PC training prepared you to undertake your HIV/AIDS activities?

	Not at all	Poorly	Adequately	Well	Very well	NA	Total
H2	3%	5%	25%	22%	35%	10%	63

H3: In working with HC individuals or groups, how would you rate the effectiveness of your specific HIV/AIDS activities? (Including the "Don't Know" responses)

	Seldom effective	Sometimes effective	Often effective	Almost always effective	Don't know	Total
H3	2%	16%	40%	31%	11%	62

H3: In working with HC individuals or groups, how would you rate the effectiveness of your specific HIV/AIDS activities? (Excluding the "Don't Know" responses)

	Seldom effective	Sometimes effective	Often effective	Almost always effective	Total
H3	2%	18%	45%	35%	55

I. Your Life in the Peace Corps

This section reports on Volunteers' descriptions of and adjustments to their living conditions, including stress factors and how Volunteers cope with stress.

I1: Have you lived with a host country individual or family?

	Never lived with a host country individual or family	Yes, I lived with a host country individual or family only	Yes, in my community (not during PST).	Yes, both during PST and later in my community.	Total
I1		1%	1%	98%	100

I2: How often do you interact with HCNs in community/family social events?

	Daily	Several times a week	Weekly	Several times a month	Monthly	Less than once a month	Total
I2	36%	23%	15%	15%	8%	3%	100

I3: How well can you communicate in the language used by most people in your community?

	Not at all	Poorly	Adequately	Well	Very well	Total
I3	1%	25%	42%	23%	9%	100

I4: Do you have the following at your worksite?

	Never	Sometimes or more often	Total
Electricity		100%	98
Running water	2%	98%	98

I4: Do you have the following at your residence?

	Never	Sometimes or more often	Total
Electricity		100%	97
Running water	3%	97%	97

I5: How well do your PC experiences match the expectations you had before you became a Volunteer?

	Not at all	Minimally	Moderately	Considerably	Exceptionally	Total
I5	8%	22%	42%	21%	7%	100

17: To what extent do the following create stress and/or emotional health issues for you?

	Not at all stressful 1	2	3	4	Exceptionally stressful 5	NA	Total
Cultural issues	10%	19%	35%	30%	6%		100
Dealing with violence in country (e.g., civil unrest, domestic violence, corporal punishment)	46%	27%	9%	7%	1%	9%	99
Health/medical problems	26%	40%	22%	10%	1%	1%	100
Issues including family, friends, loved ones in U.S.	22%	27%	22%	20%	7%	2%	100
Isolation/loneliness	15%	32%	24%	16%	12%	1%	100
Local language	15%	27%	31%	22%	4%		99
Primary assignment	10%	23%	27%	29%	11%		100
Romantic relationships in-country	29%	25%	16%	7%	7%	16%	100
Interactions with other Volunteers	38%	28%	30%	4%			100
Interactions with PC Staff	50%	33%	11%	5%	1%		100
Safety and security	53%	34%	8%	3%		2%	100
Other: Please specify below	6%			11%	11%	72%	18

I8: Please mark all of the typical ways in which you cope with stress.

		PCV Responses	% Using This Stress Reducer	Total PCVs Responding
\$18LessStress	Talk with PCVs outside my community	85	86%	
	Pursue personal hobbies	84	85%	
	Talk with friends and family in US	75	76%	
	Leave the community for a time	72	73%	
	Do sports	68	69%	
	Talk with co-workers or friends (not PCVs)	59	60%	
	Get involved in other projects	58	59%	
	Talk with PCVs in my community	48	48%	
	Talk with PC in-country staff	33	33%	
	Talk with my host family	32	32%	
	Meditate	24	24%	
	Pray	23	23%	
	Do other activity (specify)	11	11%	
	Talk with Office of Special Services staff	1	1%	
	Total			

*Percents total to more than 100% since Volunteers were asked to "mark all that apply."

I8: Others I talk with to reduce stress

	Percent	Number
I8.OTHR.S.TEXT	Open-ended results. Not responsive to request.	
Total	100%	104

I8: Other activities to reduce stress

	Percent	Number
I8.OTHRACT.TEXT2	Open-ended results. Not responsive to request.	
Total	100%	104

I8: When asked about ways of coping with stress, Volunteers who answered "No stress"

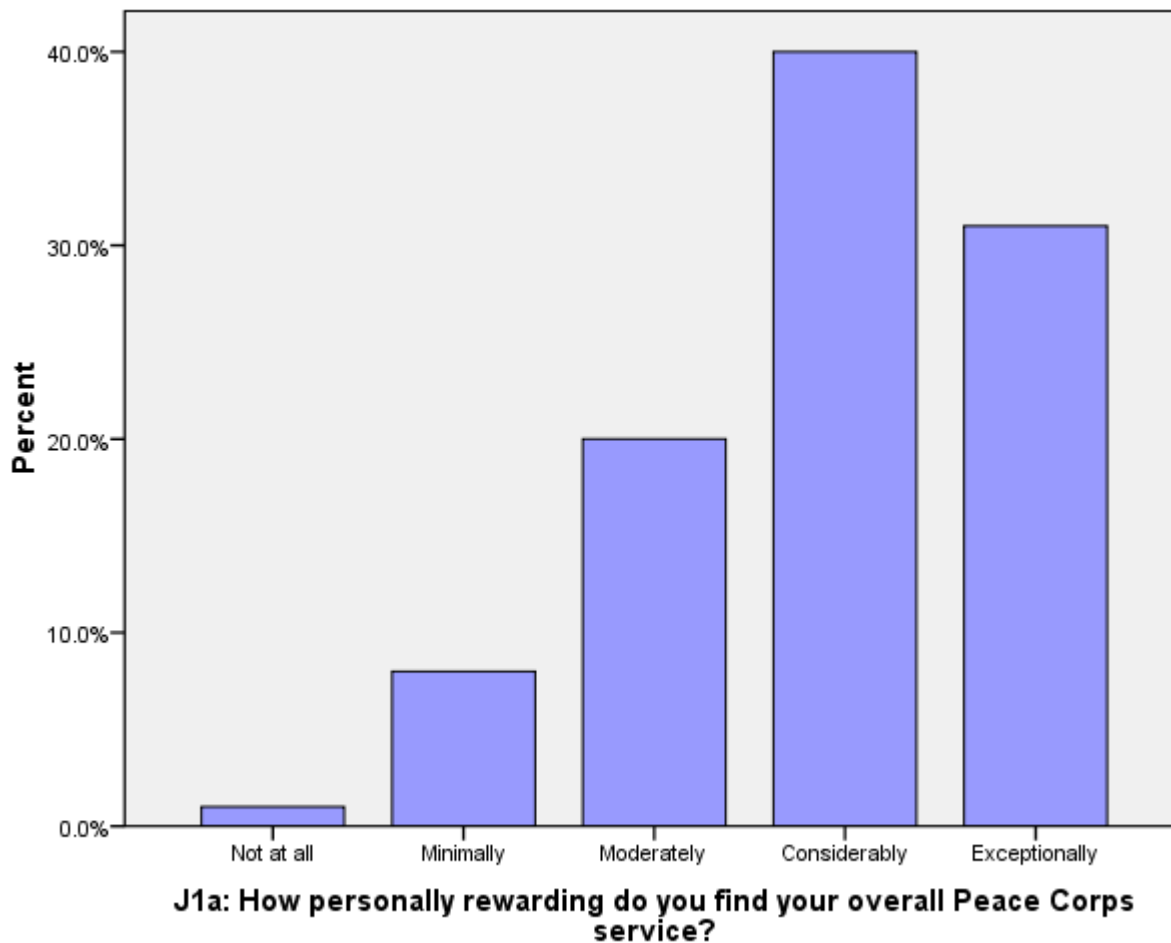
	No	Yes, I have no stress	Total
I8.NOSTRESS	99%	1%	104

J. Overall Assessment of Peace Corps Service

This section reports Volunteers' level of satisfaction with their Peace Corps service and their expectations about completing their service.

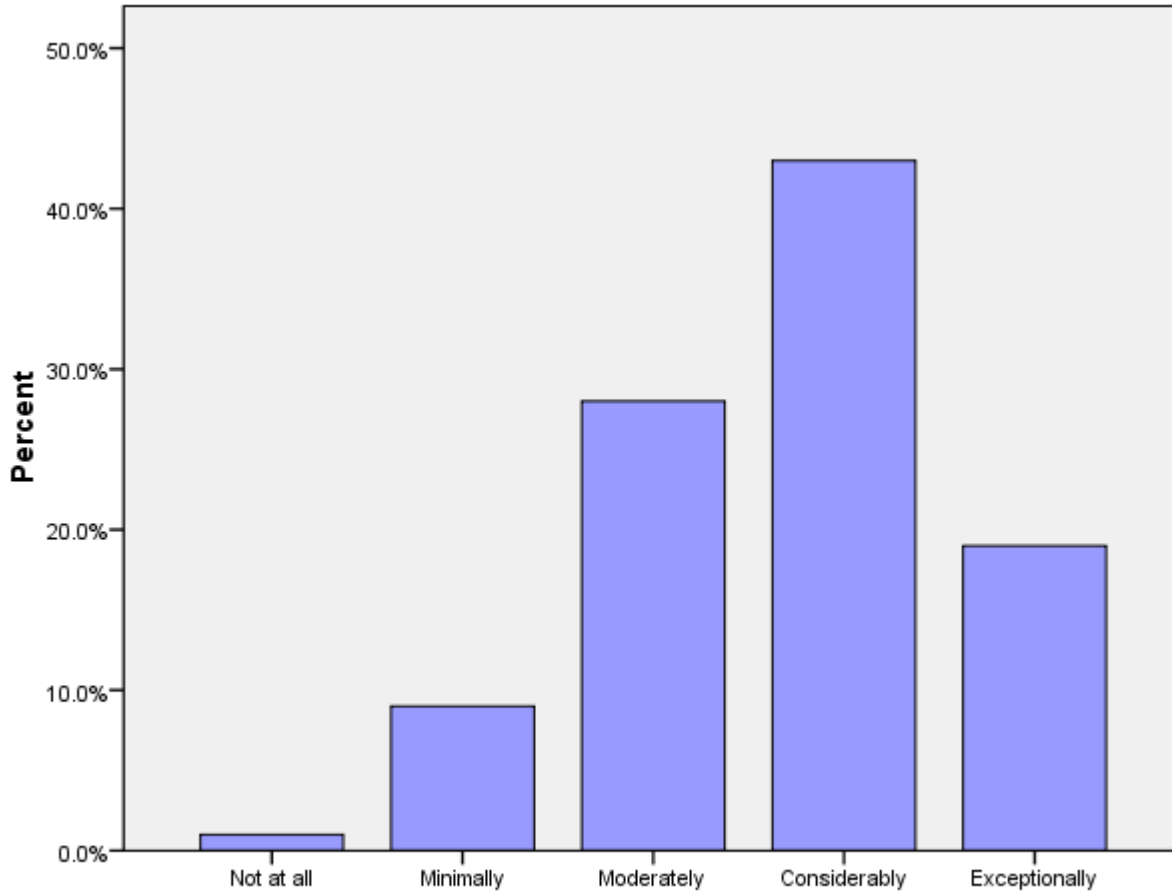
J1a: How personally rewarding do you find your overall Peace Corps service?

	Not at all	Minimally	Moderately	Considerably	Exceptionally	Total
J1A	1%	8%	20%	40%	31%	100



J1b: How personally rewarding do you find your community involvement?

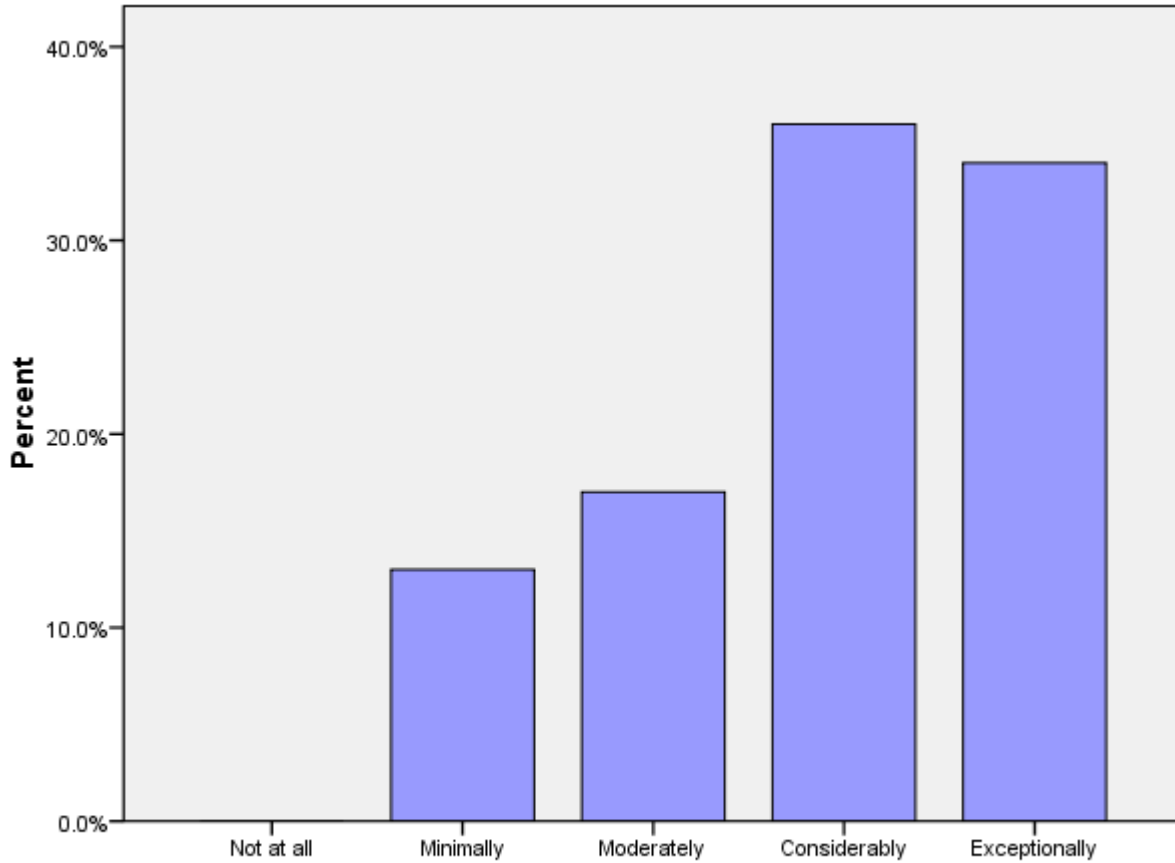
	Not at all	Minimally	Moderately	Considerably	Exceptionally	Total
J1B	1%	9%	28%	43%	19%	100



J1b: How personally rewarding do you find your community involvement?

J1c: How personally rewarding do you find your experience with other Volunteers?

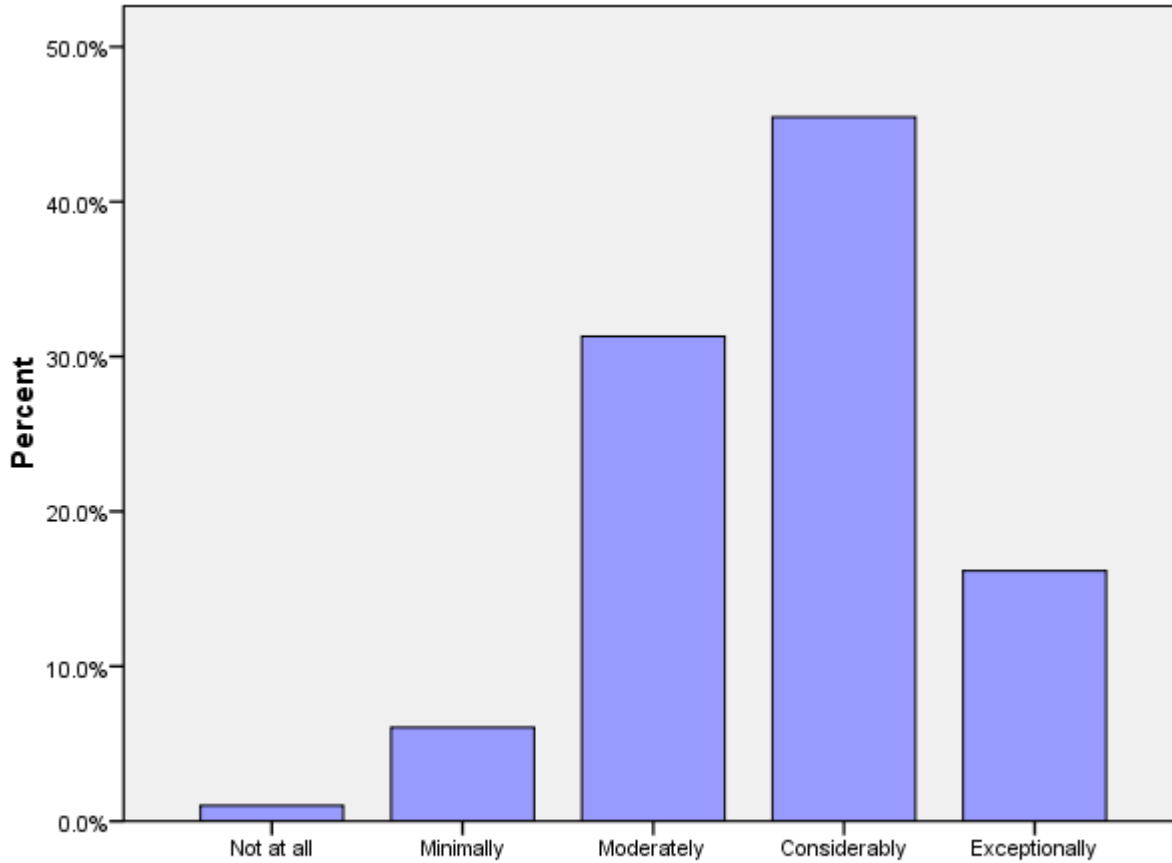
	Not at all	Minimally	Moderately	Considerably	Exceptionally	Total
J1C		13%	17%	36%	34%	100



J1c: How personally rewarding do you find your experience with other Volunteers?

J1d: How personally rewarding do you find your work with counterparts/community partners?

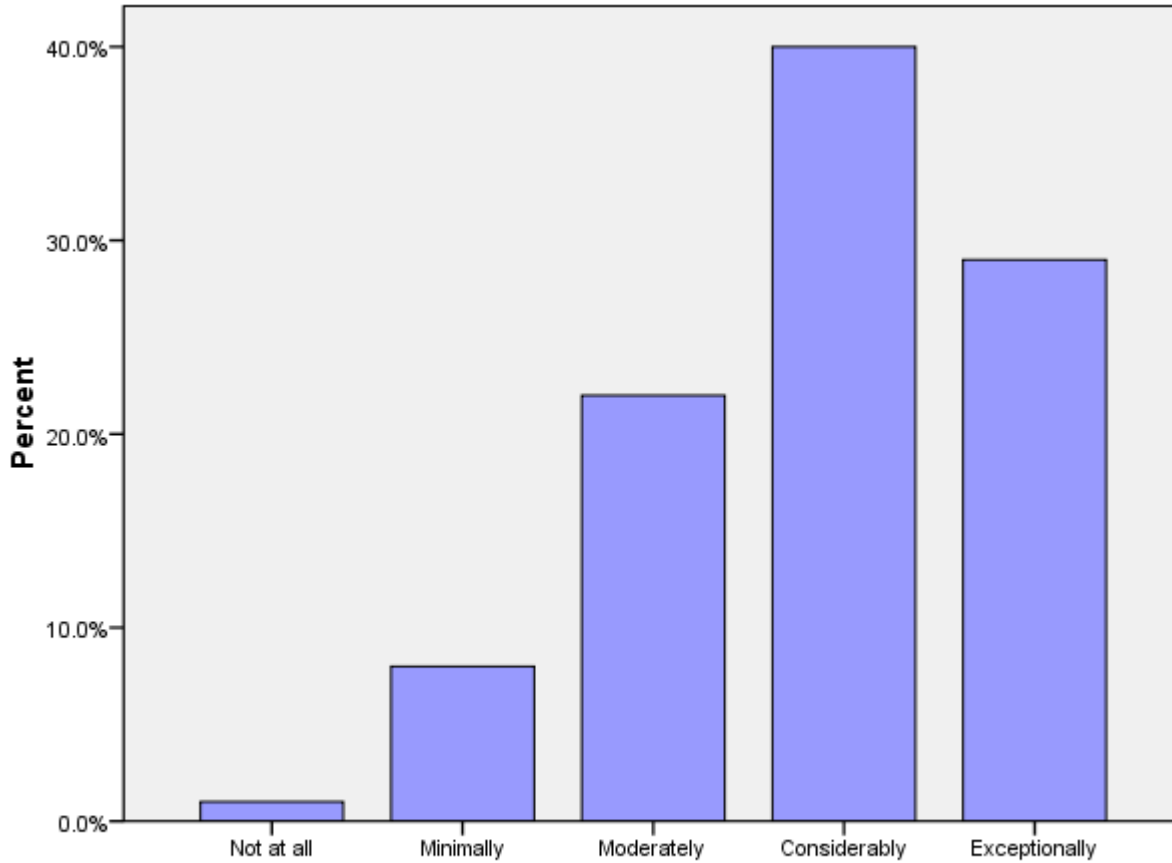
	Not at all	Minimally	Moderately	Considerably	Exceptionally	Total
J1D	1%	6%	31%	45%	16%	99



J1d: How personally rewarding do you find your work with counterparts/community partners?

J1e: How personally rewarding do you find your experience with other HCNs?

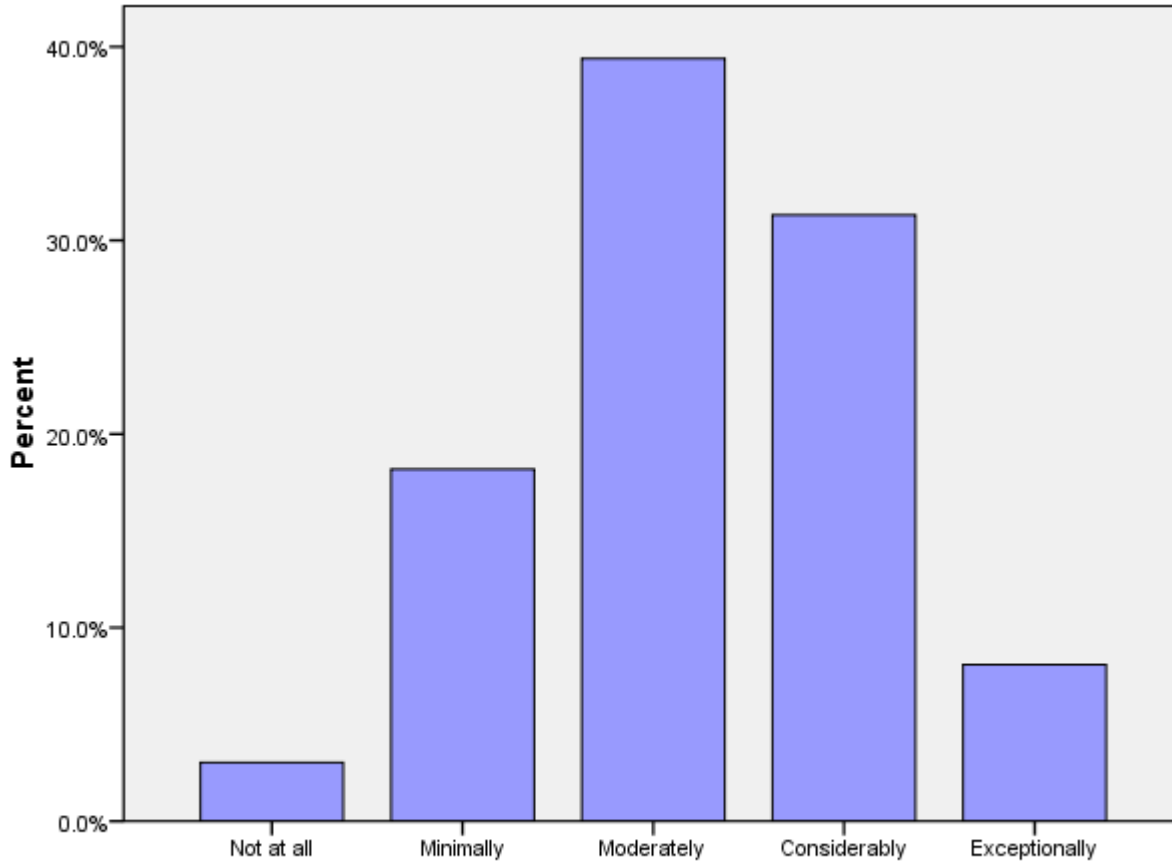
	Not at all	Minimally	Moderately	Considerably	Exceptionally	Total
J1E	1%	8%	22%	40%	29%	100



J1e: How personally rewarding do you find your experience with other HCNs?

J2a (PCVs at post 9 months+ months): Please rate how well you think you achieved Goal 1.

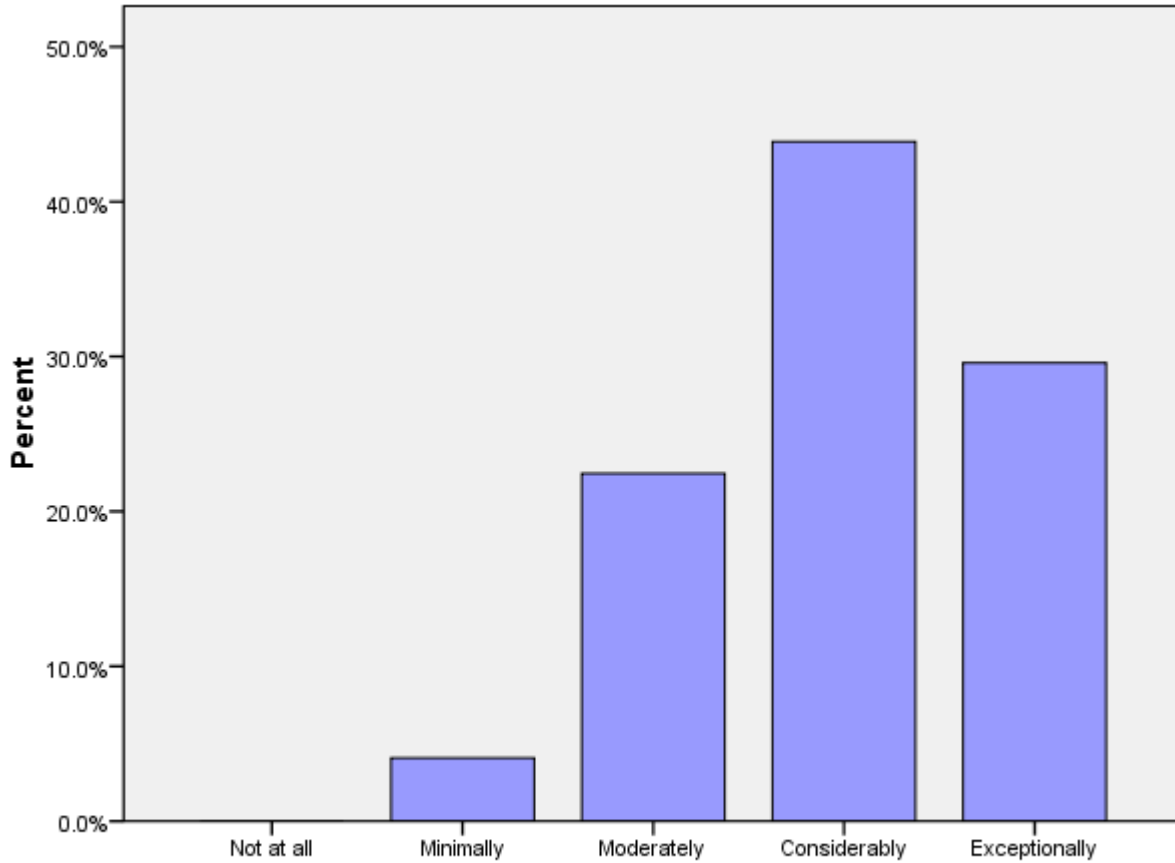
	Not at all	Minimally	Moderately	Considerably	Exceptionally	Total
J2A	3%	18%	39%	31%	8%	99



J2a (PCVs at post 9 months+ months): Rate how well you think you achieved Goal 1.

J2b: (PCVs at post 9 months+ months): Please rate how well you think you achieved Goal 2.

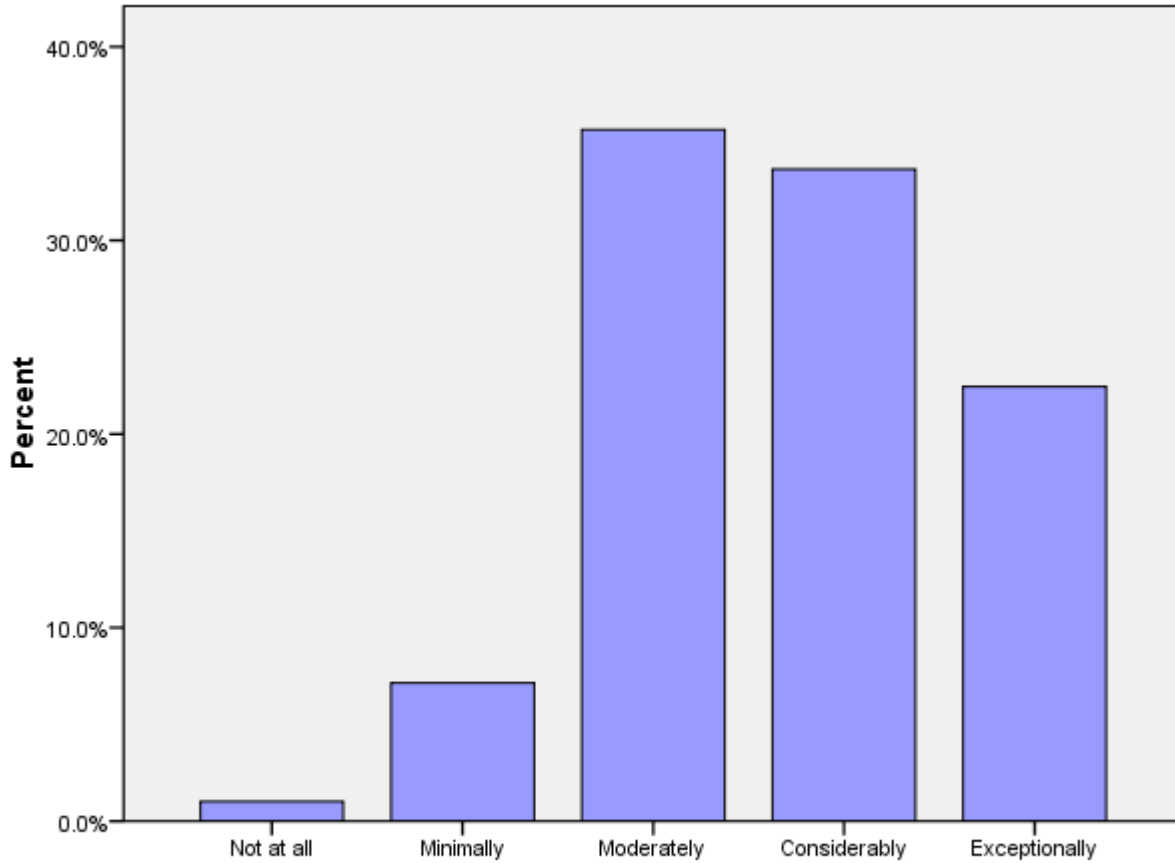
	Not at all	Minimally	Moderately	Considerably	Exceptionally	Total
J2B		4%	22%	44%	30%	98



J2b (PCVs at post 9 months+ months): Rate how well you think you achieved Goal 2.

J2c (PCVs at post 9 months+ months): Please rate how well you think you achieved Goal 3.

	Not at all	Minimally	Moderately	Considerably	Exceptionally	Total
J2C	1%	7%	36%	34%	22%	98



J2c (PCVs at post 9 months+ months): Please rate how well you think you achieved Goal 3.

J3: Today, would you make the same decision to join the Peace Corps?

	No	Not likely	Possibly	Probably	Definitely	Total
J3	2%	2%	7%	21%	68%	100

J4: Would you recommend Peace Corps service to others you think are qualified?

	No	Not likely	Possibly	Probably	Definitely	Total
J4	2%	2%	13%	15%	68%	100

J5: Do you intend to complete your Peace Corps service?

	No	Not sure	Yes	Might extend	Total
J5	1%	3%	66%	30%	100

J6: Would your host country benefit most if the Peace Corps program was---?

	Discontinued	Reduced	Refocused/redesig ned	Maintained as is	Expanded	Total
J6	2%	3%	61%	18%	16%	100

K. Activities After Peace Corps Service

This section reports on Volunteers' plans for after they have completed their Peace Corps Service.

K1a: What are your plans after your Peace Corps service? Work in government.

Government			
In the U.S.	In your host country	In another country	N
94%	0%	17%	18

* Percent of cases was used. Percentages will be greater than 100 since Volunteers were asked to select all that applied.

K1b: What are your plans after your Peace Corps service? Work in the private sector.

Private Sector			
In the U.S.	In your host country	In another country	N
82%	6%	29%	17

* Percent of cases was used. Percentages will be greater than 100 since Volunteers were asked to select all that applied.

K1c: What are your plans after your Peace Corps service? Work for an NGO.

NGO			
In the U.S.	In your host country	In another country	N
89%	6%	22%	18

* Percent of cases was used. Percentages will be greater than 100 since Volunteers were asked to select all that applied.

K1d: What are your plans after your Peace Corps service? Work for PC Response.

Peace Corps Response			
In the U.S.	In your host country	In another country	N
43%	43%	71%	7

* Percent of cases was used. Percentages will be greater than 100 since Volunteers were asked to select all that applied.

K1e: What are your plans after your Peace Corps service? Continue to participate in volunteer activities.

Volunteer Activities			
In the U.S.	In your host country	In another country	N
100%	12%	16%	25

* Percent of cases was used. Percentages will be greater than 100 since Volunteers were asked to select all that applied.

K1f: What are your plans after your Peace Corps service? Graduate school/academic credentialing.

Graduate School			
In the U.S.	In your host country	In another country	N
100%	0%	5%	20

* Percent of cases was used. Percentages will be greater than 100 since Volunteers were asked to select all that applied.

K1g: What are your plans after your Peace Corps service? Travel.

Travel			
In the U.S.	In your host country	In another country	N
39%	36%	73%	33

* Percent of cases was used. Percentages will be greater than 100 since Volunteers were asked to select all that applied.

K1h: What are your plans after your Peace Corps service? Other.

Other			
In the U.S.	In your host country	In another country	N
86%	14%	57%	7

* Percent of cases was used. Percentages will be greater than 100 since Volunteers were asked to select all that applied.

K2: How prepared do you feel to share your Peace Corps experience and knowledge of your host country with others in the United States when you return?

	Not at all	Minimally	Moderately	Considerably	Total
How prepared do you feel to share your Peace Corps experience and knowledge of your host country with others in the United States when you return?	2%	2%	32%	64%	47

K3: How well do you feel Peace Corps has prepared you for life in the U. S. after you return?

	Not at all	Minimally	Moderately	Considerably	Exceptionally	Total
How well do you feel Peace Corps has prepared you for life in the U. S. after your return?	2%	17%	39%	35%	7%	46

K6: Have your life/career goals changed because of your Peace Corps service?

	No	Yes	Total
Have your life/career goals changed because of your Peace Corps service?	50%	50%	44

K7: How well informed are you about the following opportunities for returned Volunteers:

	Not informed	Somewhat informed	Well informed	N
Peace Corps Response	17%	51%	32%	47
Peace Corps' Fellows/USA program	9%	50%	41%	46
Noncompetitive eligibility	2%	28%	70%	47
RPCV Career Center in Washington, D.C.	26%	64%	11%	47
Returned Volunteer Services	26%	64%	11%	47

K8: How did you first learn about the Fellows/USA program?

Learn about Fellows/USA program	PC Website	57%	
	Word of mouth	41%	
	From a recruiter	32%	
	From staff in the host country's PC office	23%	
	At COS Conference	20%	
	University website	16%	
	At post's information resource center	16%	
	Hotline	14%	
	Mid-service mailing from PC	11%	
	At PST	9%	
	At IST	9%	
	Other	7%	
	N		44

* Percent of cases was used. Percentages will be greater than 100 since Volunteers were asked to select all that applied.

K9: Which of the following resources do you think will be helpful as you exit

Peace Corps service?

K9 Resources	Career Resource Manual	68%	
	Access to free job bulletins	68%	
	Electronic newsletter with job postings and career advice	64%	
	RPCV job search webinars	60%	
	RPCV Handbook	57%	
	List of RPCVs willing to talk to me about their careers	57%	
	Applying to federal government with RPCV noncompetitive eligibility	55%	
	RPCV career conferences	55%	
	Connection with RPCVs through a mentoring program	43%	
	Guide to speaking about my PC service to others (third goal)	40%	
	Self-assessment software (SIGI 3)	23%	
	Other	11%	
	NOT SURE	6%	
	N		47

* Percent of cases was used. Percentages will be greater than 100 since Volunteers were asked to select all that applied.

K10: Which of the following third goal (helping promote a better understanding of peoples on the part of Americans) activities do you plan to do when you return to the U. S.?

K10 Third Goal	Continue with volunteerism and service learning	87%	
	Join a RPCV group	62%	
	Speak to school age children about my experience	57%	
	Speak to a group of adults about my experience	55%	
	Participate in PC Week	53%	
	Write stories from my PC service on my own	36%	
	Obtain and use PC third goal resources	19%	
	NOT SURE	11%	
	Write stories from my PC service in conjunction with CWWS	6%	
	Other	0%	
	N		47

* Percent of cases was used. Percentages will be greater than 100 since Volunteers were asked to select all that applied.