



**Peace Corps Volunteer  
2009 Annual Volunteer Survey**

**Romania  
October 13, 2009**

**Office of Strategic Information, Research and Planning**

## Table of Contents

<b>Introduction to the 2009 Annual Volunteer Survey Report .....</b>	<b>3</b>
<b>Overview of the Post's 2009 Volunteer Survey Respondents.....</b>	<b>4</b>
<b>A. Applying to the Peace Corps.....</b>	<b>6</b>
<b>B. Preparation for the Peace Corps.....</b>	<b>6</b>
<b>C. Your Peace Corps Assignment .....</b>	<b>7</b>
<b>D. Training for Peace Corps Assignment .....</b>	<b>13</b>
<b>E. Volunteer Assignment Goals and Impact.....</b>	<b>16</b>
<b>F. Peace Corps Support.....</b>	<b>25</b>
<b>G. Your Safety and Security .....</b>	<b>31</b>
<b>H. Volunteers Working in HIV/AIDS .....</b>	<b>40</b>
<b>I. Your Life in the Peace Corps .....</b>	<b>41</b>
<b>J. Overall Assessment of Peace Corps Service .....</b>	<b>47</b>
<b>K. Activities After Peace Corps Service.....</b>	<b>56</b>

## **Introduction to the 2009 Annual Volunteer Survey Report**

This country report contains the tables and charts from the Volunteers in your country who completed the 2009 Annual Volunteer Survey (AVS). The results provide a picture of the activities, experiences and views of Peace Corps Volunteers in 2009. The results show areas where Volunteers' needs are met and identify areas where improvements may be needed. The survey was fielded from May through August 2009.

A core set of questions was asked of all Volunteers. For the first time, Volunteers were also asked a series of questions relevant to their time in country:

- Volunteers in country 8 or less months were asked about applying to and preparing for the Peace Corps.
- Volunteers in country 18 or less months were asked about the effectiveness of their pre-service training (PST).
- Volunteers in country 19 or more months were asked about their post-service plans, as well as the Peace Corps' resources for their post-service transition.

Tables and graphs are labeled by survey section and the survey question. The tables show the percent of post respondents that selected each choice and the total number of post respondents that answered the question. The number of responses for each question will vary, depending on:

- whether the question was asked of all Volunteers or only the Volunteers in-country a certain number of months and
- how many of the Volunteers who were "eligible" to answer the question did respond.

Most survey questions asked respondents to select only one from a set of choices. The percentages for the "select one" responses add up to 100 percent. Other questions asked Volunteers to "mark all that apply" in situations, for example, where it is likely that respondents are involved in more than one secondary activity. The percentages of the "mark all that apply" responses will total more than 100 percent; each percentage equals the number of respondents selecting that choice divided by the number of respondents who answered the question.

Posts are encouraged to compare these 2009 results with the 2006 and 2008 survey results to note trends and changes over time. Because questions are revised from one survey to the next, a crosswalk between the 2008 and 2009 questions is posted on the OSIRP intranet page under 2009 AVS Reports "Reference Documents." The earlier 2008 survey global, regional and post reports are also posted on the OSIRP Intranet page.

Volunteers' extensive narrative responses to the 29 open-ended questions on the survey are in the post's 2009 Annual Volunteer Survey Open Ended Responses report. All Volunteers' narrative responses to key questions will be analyzed for global themes and presented in a later report.

The number of surveys for each post includes surveys submitted online by Volunteers and completed paper surveys sent to the Peace Corps headquarters for hand-entry into the online survey system. The final count may include mostly completed partial surveys added to the final dataset after the survey closed.

## **Overview of the Post's 2009 Volunteer Survey Respondents**

This overview presents basic information about the characteristics of Volunteers who completed the 2009 Annual Volunteer Survey at post.

**Completed Surveys by Months in Country**

	8 months or less		9 to 18 months		19 months or more		Total	
	Number	Percent	Number	Percent	Number	Percent	Number	Percent
Months3grp			53	60%	36	40%	89	100%

**L1: What is your age?**

	20-29	30-49	50+	Total
AGE3grp	74%	11%	15%	84

**L2: What is your gender?**

	Female	Male	Total
GENDER	51%	49%	84

**Completed surveys by project.**

	Count	Column N %
Community Economic Development	11	12%
Environmental Management & Education	15	17%
TEFL	50	56%
Youth Development Project	7	8%
Other. Please specify	6	7%
Total	89	100%

**C2: Which best describes the focus of your primary assignment/work?**

		Percent	Number
C2	English teaching	57%	51
	NGO development	12%	11
	Environmental education	9%	8
	Community development	6%	5
	Youth development	4%	4
	Agriculture/fish/livestock	3%	3
	Business education/advising	2%	2
	Other: Please specify	2%	2
	Urban & regional planning/municipal development	1%	1
	Health extension	1%	1
	Other education	1%	1
	Water sanitation		
	HIV/AIDS		
	Forestry/parks		
	Teacher training		
	Math/science teaching		
	Agroforestry		
	Information & communications technology (ICT)		
	Total	100%	89

**C2.TEXT: Which of the following initiatives does your primary work include? Other (specify)**

		PERCENT	NUMBER
C2.TEXT	Open-ended results. Not responsive to request.		
	Total	100%	89

## **A. Applying to the Peace Corps**

*This section reports Volunteers' motivations in applying and accepting a Peace Corps assignment.*

## **B. Preparation for the Peace Corps**

*This section reports on Volunteers' assessment of the materials and information available before their service.*

*Sections A and B are only completed by Volunteers who have been in country less than 9 months. No Volunteers in Romania reported they had been in country 8 months or less.*

## **C. Your Peace Corps Assignment**

*This section reports Volunteers' primary assignment work and secondary activities. The term "primary assignment" refers to the Volunteers' assignment which is part of an overall project plan designed by your host country partners and in-country Peace Corps staff.*

**C3: Which of the following activities does your primary assignment/work include? Mark all that apply.**

	PCV Responses	% Involved in Initiative	Total PCVs Responding
\$C3PrmAct English teaching	62	70%	
Working with youth	53	60%	
Working with NGO(s)	24	27%	
Literacy	20	22%	
Environment work	18	20%	
Library development	16	18%	
Girls' education	15	17%	
Working with special groups (e.g., disabled, elderly, ethnic minorities, orphans)	15	17%	
Arts	12	13%	
Information and communications technology (ICT)	11	12%	
Rural development	11	12%	
Biodiversity conservation	8	9%	
Mobilize host country nationals (HCNs) to volunteer	8	9%	
Natural resources management	8	9%	
Income generation	7	8%	
Nutrition education	7	8%	
Sports/fitness	7	8%	
World Wise Schools/ Correspondence Match	7	8%	
Other: Please specify	6	7%	
Business advertising	5	6%	

Community food security (production/marketing)	4	4%
Urban development/municipal development	4	4%
Child survival	3	3%
Water and sanitation	3	3%
WID/GAD	3	3%
HIV/AIDS	2	2%
Microenterprise development	2	2%
Household food security		
Total		89

Percents may total to more than 100% since Volunteers were asked to "Mark all that apply."

**C3: Which of the following activities does your primary assignment/work include? Other  
(specify)**

	Column N %	Count	Row N %
C3.OTHER.TEXT			
Open-ended results. Not responsive to request.			
Total		89	100%

**C4: Hours Spent on Primary Assignment During Average Work Week**

	None	1-10 hrs	11-20 hrs	21-30 hrs	31-40 hrs	More than 40 hrs	Total
C4Hrs6grp	1%	7%	31%	43%	15%	3%	88



**C4: How many hours do you spend on your primary assignment during an average work week?**

	All Volunteers	Average	Lowest reported	Highest reported	Did not answer
C4	89	24.5	0	55	1

**C5: Which of the following do your secondary activities (other than your primary assignment work) include? Mark all that apply.**

	PCV Responses	% Involved in Initiative	Total PCVs Responding
\$C5SecAct English teaching	55	65%	
Working with youth	55	65%	
Environment work	27	32%	
Working with NGO(s)	27	32%	
Arts	25	30%	
Sports/fitness	22	26%	
Mobilize host country nationals (HCNs) to volunteer	18	21%	
Working with special groups (e.g., disabled, elderly, ethnic minorities, orphans)	18	21%	
Girls' education	11	13%	
Library development	11	13%	
World Wise Schools/ Correspondence Match	10	12%	
Other: Please specify	10	12%	
WID/GAD	7	8%	
Literacy	6	7%	
Nutrition education	6	7%	
Rural development	6	7%	
Biodiversity conservation	5	6%	
Business advertising	3	4%	
HIV/AIDS	3	4%	
Income generation	3	4%	

Natural resources management	2	2%
Urban development/municipal development	2	2%
Child survival	1	1%
Community food security (production/marketing)	1	1%
Information and communications technology (ICT)	1	1%
Water and sanitation	1	1%
Household food security		
Microenterprise development		
Total		84

Percents may total to more than 100% since Volunteers were asked to "Mark all that apply."

**C5: Which of the following do your secondary activities include? Other (specify)**

	Column N %	Count	Row N %
C5.OTHER.TEXT	Open-ended results. Not responsive to request.		
Total		89	100%

**C5: No Secondary Activities**

	Percent	Number
C5.NONE No	96%	85
Yes, I have no secondary activities	4%	4
Total	100%	89

**C6: Hours Spent on Secondary Activities During Average Work Week**

	None	1-10 hrs	11-20 hrs	21-30 hrs	31-40 hrs	More than 40 hrs	Total
C6Hrs6grp		66%	28%	2%	5%		87

**C6. How many hours do you spend on secondary activities during an average work week?**

	All Volunteers	Average	Lowest reported	Highest reported	Did not answer
C6	89	11.7	1	40	2

**C7: How personally satisfying is your--?**

	Not at all 1	2	3	4	Exceptionally 5	Total
Primary assignment	1%	22%	32%	33%	12%	88
Secondary project/activities	2%	7%	20%	45%	26%	86

## **D. Training for Peace Corps Assignment**

*This section reports Volunteers' assessments of the effectiveness of their Pre-Service Training and In-Service Training at post. In-Service Training (IST) includes: Reconnect; Technical IST; Mid-Service and Close of Service conferences; project management/leadership conferences; and other post-sponsored training sessions.*

**D1: (PCVs at post 18 months or less) How effective was your Pre-Service Training (PST) in preparing you to--**

	Not effective	Poor	Adequate	Effective	Very Effective	NA/No training	Total
Manage cultural differences		8%	32%	45%	15%		53
Deal with adjustment issues		2%	36%	40%	23%		53
Work with counterparts/community partners		25%	36%	34%	6%		53
Use language needed in work and social interactions	4%	8%	17%	34%	38%		53
Perform technical aspects of your work	2%	13%	37%	38%	10%		52
Work on your project goals and objectives	2%	10%	42%	35%	12%		52
Conduct a participatory community needs assessment (e.g., PACA)	2%	23%	38%	27%	2%	8%	52
Monitor your project goals and outcomes		15%	38%	32%	13%	2%	53
Maintain your physical health	2%	6%	28%	42%	23%		53
Maintain your mental/emotional health		9%	32%	36%	23%		53
Maintain your personal safety and security		2%	17%	42%	38%	2%	53

**D5: How effective was your In-Service Training (IST) in preparing you to--**

	Not effective	Poor	Adequate	Effective	Very Effective	NA/No training	Total
Manage cultural differences	1%	6%	47%	36%	8%	2%	88
Deal with adjustment issues	1%	6%	47%	33%	11%	2%	88
Build and strengthen working relationships with counterparts/community partners	2%	11%	41%	35%	8%	2%	88
Use language needed in work and social interactions	8%	3%	40%	40%	9%		88
Perform technical aspects of your work	3%	9%	45%	31%	11%		88
Work on your project goals and objectives	2%	6%	41%	34%	14%	2%	87
Conduct a participatory community needs assessment (e.g.,PACA)	2%	14%	36%	22%	8%	18%	87
Monitor project goals and outcomes	1%	3%	48%	38%	9%	1%	88
Maintain your physical health	1%	5%	30%	33%	26%	6%	88
Maintain your mental/emotional health	2%	11%	31%	34%	18%	3%	88
Maintain your personal safety and security		2%	26%	38%	31%	3%	88

**D8: Did you have this skill before joining the Peace Corps?**

	No/ No answer	Yes	Total
Skills specific to my assignment	32	54	86
Assessing community needs	59	28	87
Organizing/implementing community activities	32	55	87
Building capacity of local organizations	61	26	87
Monitoring, reporting, and evaluating my work	20	68	88
Designing and implementing training sessions	44	43	87

**D8: Is the skill needed for your Peace Corps work?**

	No/ No answer	Yes	Total
Skills specific to my assignment	6	80	86
Assessing community needs	14	70	84
Organizing/implementing community activities	12	74	86
Building capacity of local organizations	30	56	86
Monitoring, reporting, and evaluating my work	4	82	86
Designing and implementing training sessions	30	57	87

**D8: Have you had adequate Peace Corps training to acquire the skill?**

	No/ No answer	Yes	Total
Skills specific to my assignment	17	48	65
Assessing community needs	17	55	72
Organizing/implementing community activities	24	46	70
Building capacity of local organizations	32	31	63
Monitoring, reporting, and evaluating my work	11	57	68
Designing and implementing training sessions	30	37	67

## **E. Volunteer Assignment Goals and Impact**

*This section reports Volunteers' self-assessments of their impact on the individuals and organizations in the communities in which they serve. At the end of this section, Volunteers' third goal activities, participation in Coverdell World Wise School/Correspondence Match (CWWS/CM) and use of Peace Corps resources to support their work are reported in questions.*

**E1: To what extent does your Volunteer work assignment address the following?**

	Not at all 1	2	3	4	Exceptionally 5	NA	Total
Meets the objectives of the project plan	3%	12%	27%	35%	18%	4%	89
Builds local capacity for sustainability	3%	18%	31%	33%	11%	3%	89
Involves local people in planning and implementing activities	3%	10%	26%	35%	22%	3%	89
Complements other local development activities	5%	19%	31%	28%	11%	6%	88
Transfers skills to host country individuals and organizations	4%	12%	30%	37%	16%		89
Mobilizes host country nationals (HCNs) to volunteer	7%	18%	32%	25%	15%	3%	88
Helps promote a better understanding of Americans on the part of the peoples served (goal 2)	1%	2%	16%	40%	40%		89
Helps promote a better understanding of other peoples on the part of Americans (goal 3)	2%	9%	16%	40%	33%		89

**E2: To what extent does your host community--?**

	Not at all 1	2	3	4	Exceptionally 5	NA	Total
Need the assistance that you provided	11%	28%	17%	28%	17%		36
Want the assistance that you provided	8%	3%	25%	33%	31%		36



**E3: How much impact does your assignment have on the capacities of your host counterparts/community partners?**

	None 1	2	3	4	Exceptional 5	NA	Total
Ability to access information (e.g., library, Internet, etc.)	20%	24%	26%	18%	9%	3%	89
Leadership skills	11%	19%	31%	29%	6%	3%	89
Planning and management	8%	17%	25%	42%	8%	1%	89
Problem solving/critical thinking	11%	17%	33%	31%	7%	1%	89
Self-esteem	9%	12%	27%	35%	15%	2%	89
Technical skills	13%	26%	29%	25%	6%	1%	89
Use of local resources	8%	23%	32%	31%	3%	3%	88
Use of external resources (e.g., grants, international NGOs)	11%	19%	28%	27%	10%	4%	89
Better understanding of Americans	2%	2%	12%	44%	39%		89
Other: Please specify below	5%			5%		90%	21

**E3: How much impact does your assignment have on the capacities of your host counterparts/community partners? Other (specify)**

	Column N %	Count	Row N %
E3_OTHER	Open-ended results. Not responsive to request.		
Total		89	100%

**E4: How much impact does your assignment have on the capacities of your host individuals with whom you work?**

	None 1	2	3	4	Exceptional 5	NA	Total
Ability to access information (e.g., library, Internet, etc.)	14%	16%	30%	28%	10%	2%	87
Leadership skills	1%	9%	30%	41%	17%	1%	87
Planning and management	6%	10%	45%	26%	10%	2%	87
Problem solving/critical thinking	6%	6%	26%	43%	20%		87
Self-esteem	6%	5%	15%	40%	33%	1%	87
Technical skills	5%	14%	39%	31%	10%	1%	87
Use of local resources	6%	23%	32%	31%	3%	5%	87
Use of external resources (e.g., grants, international NGOs)	18%	28%	16%	24%	7%	7%	87
Better understanding of Americans	1%	2%	10%	36%	51%		87
Other: Please specify below	4%				12%	84%	25

**E4: How much impact does your assignment have on the capacities of your host individuals with whom you work? Other (specify)**

	Column N %	Count	Row N %
E4_OTHER Open-ended results. Not responsive to request.			
Total		89	100%

**E5: To what extent does your assignment enhance the capacities of organizations with whom you work?**

	None 1	2	3	4	Exceptional 5	NA	Total
Identifying and prioritizing organizational needs	16%	22%	29%	22%	6%	4%	89
Leadership	12%	21%	31%	29%	2%	3%	89
Management	16%	25%	26%	22%	6%	6%	89
Monitoring and evaluation	13%	25%	32%	21%	5%	5%	87
Planning and implementing organizational activities	7%	20%	22%	37%	10%	3%	89
Teamwork/participatory decision-making	11%	17%	27%	31%	10%	3%	89
Use of local resources	13%	18%	34%	26%	4%	4%	89
Ability to mobilize, manage, and sustain local volunteers	15%	20%	33%	21%	7%	4%	89
Other: Please specify below	4%				4%	92%	25

**E5: To what extent does your assignment enhance the capacities of organizations with whom you work? Other (specify)**

	Column N %	Count	Row N %
E5_OTHER	Open-ended results. Not responsive to request.		
Total		89	100%

**E6: How effective have you been in transferring knowledge and skills to help the following persons or groups build their capacities?**

	Not at all 1	2	3	4	Exceptionally 5	NA	Total
Your counterpart/community partner	9%	19%	26%	31%	12%	2%	89
Another institution/organization	8%	16%	37%	29%	7%	3%	89
Members of your host community	1%	8%	33%	43%	11%	4%	89
Other: Please specify below				9%	4%	87%	23

**E7: To what extent have HC individuals gained a better understanding of Americans? Includes "Too early to tell."**

	Not at all	Minimally	Moderately	Considerably	Exceptionally	Too early to tell	Total
E7	1%	4%	12%	58%	22%	1%	89

**E7: To what extent have HC individuals gained a better understanding of Americans? Excludes "Too early to tell."**

	Not at all	Minimally	Moderately	Considerably	Exceptionally	Total
E7	1%	5%	12%	59%	23%	88

**E9. In which of the following third goal activities have you participated during your PC service?**

		PCV Responses	% Doing This	Total PCVs Responding
\$E9Goal3Acts	Electronic updates	84	94%	89
	Hosting American visitors	77	87%	
	Personal website or blog	44	49%	
	Hard copy/paper update	40	45%	
	Enrollment in the CWWS/CMS program	23	26%	
	Pen pal program/letter exchange	19	21%	
	While on home leave, spoke at a school or community group	15	17%	
	Podcasted/created a slide show or video posted online	5	6%	
	Other please specify	3	3%	
	Peace Corps Week activities	2	2%	
Total				

Percents may total to more than 100% since Volunteers were asked to "Mark all that apply."

**E9: When asked about third goal activities, Volunteer answered "No involvement in third goal activities."**

	Have done third goal activities	No third goal activities	Total
Peace Corps' third goal is to "help promote a better understanding of other peoples on the part of Americans." In which of the following third goal activities, including your contact with family and friends, have you participated during your Peace Corps	100%		89

**E10: Would you recommend participation in the CWWS CMS to other Volunteers?**

	I have not participated in CWWS/CM.	I have participated in CWWS/CM & would recommend it	I have participated in CWWS/CM and would NOT recommend it	Total
E10	69%	20%	10%	88

**E11: To what extent have Americans gained a better understanding of HCNs? Includes "Too early to tell."**

	Not at all	Minimally	Moderately	Considerably	Exceptionally	Too early to tell	Total
E11	0%	3%	28%	48%	19%	1%	89

**E11: To what extent have Americans gained a better understanding of HCNs? Excludes "Too early to tell."**

	Not at all	Minimally	Moderately	Considerably	Exceptionally	Total
E11		3%	28%	49%	19%	88

**E12: Which of the following resources have been useful to you in your third goal activities?**

	Yes
Coverdell World Wise Schools staff (Useful)	9
Contact with other Peace Corps staff in Washington, D.C. (Useful)	11
Information at staging (Useful)	28
Information from your post sent to you before departure (Useful)	54
Internet (Useful)	77
Invitation kits (Useful)	37
Material in staging packet (Useful)	32
Peace Corps staff at post (e.g., World Wise School contact) (Useful)	26
Recruiting (Useful)	13
Resources available from Coverdell World Wise Schools (Useful)	4
Resources available on Peace Corps website (e.g., third goal section) (Useful)	26
Training on third goal (Useful)	34
Other: Please specify below (Useful)	7

**E12: Which of the following resources would/will be helpful to you in your third goal activities?**

	Yes
Coverdell World Wise Schools staff (Would be helpful)	17
Contact with other Peace Corps staff in Washington, D.C. (Would be helpful)	21
Information at staging (Would be helpful)	11
Information from your post sent to you before departure (Would be helpful)	18
Internet (Would be helpful)	8
Invitation kits (Would be helpful)	10
Material in staging packet (Would be helpful)	8
Peace Corps staff at post (e.g., World Wise School contact) (Would be helpful)	16
Recruiting (Would be helpful)	16
Resources available from Coverdell World Wise Schools (Would be helpful)	17
Resources available on Peace Corps website (e.g., third goal section) (Would be helpful)	18
Training on third goal (Would be helpful)	19
Other: Please specify below (Would/will be helpful)	3

**E12: Other useful/helpful resources? Other (specify)**

	Column N %	Count	Row N %
E12_OTHER	Open-ended results. Not responsive to request.		

Open-ended results. Not responsive to request.

Open-ended results. Not responsive to request.			
Total		89	100%

**E13: Do you know about the Peace Corps Partnership Program (PCPP)?**

	No	Yes, but I haven't used it.	Yes, I have used it.	Total
E13	22%	70%	8%	89



## **F. Peace Corps Support**

*This section reports Volunteers' assessments of in-country Peace Corps.*

### **F2: How satisfied are you with the health care you received from your PCMO(s)?**

	Not at all	Minimally	Adequately	Considerably	Exceptionally	Not Used	Total
F2			27%	30%	43%		89

### **F3: How satisfied are you with the following support provided by in-country PC staff?**

	Not at all 1	2	3	4	Completely 5	NA	Total
Administrative/logistical		2%	11%	41%	45%		87
Cross-cultural	2%	6%	33%	36%	23%		87
Emotional		8%	31%	31%	29%	1%	87
Feedback on my work reports	1%	18%	23%	29%	25%	3%	87
Job assignment	8%	11%	24%	29%	25%	2%	87
Language learning	2%	11%	18%	33%	34%		87
Medical			17%	35%	48%		86
Safety and security		3%	9%	31%	56%		87
Site selection/preparation	8%	24%	21%	24%	23%		87
Technical skills	1%	10%	43%	28%	14%	5%	87

### **F4: How satisfied are you with the Peace Corps allocation of time and resources to mental health/adjustment issues?**

	Not at all satisfied 1	2	3	4	Completely satisfied 5	Total
F4	1%	12%	27%	37%	23%	86

### **F5: What level of PC support have you received to help cope with stress from issues such as HIV/AIDS, food insecurity, etc. in your community? (Including PCVs w/no need for support)**

	No support	Minimal support	Adequate support	Considerable support	Exceptional support	NA / I have no need for support	Total
F5		7%	17%	12%	5%	59%	88

**F5: What level of PC support have you received to help cope with stress from issues such as HIV/AIDS, food insecurity, etc. in your community? (Excluding PCVs w/no need for support)**

	No support	Minimal support	Adequate support	Considerable support	Exceptional support	Total
F5	0%	17%	42%	31%	11%	36

**F6: How would you rate your interaction with the Country Director in terms of the following?**

	Not adequate	Adequate	Total
Responsiveness to my issues	1%	99%	88
Informative content	0%	100%	89
My comfort level discussing issues	1%	99%	89
Adequacy of visits	9%	91%	88

**F6b: How would you rate your interaction with the PTO/SRPTC in terms of the following?**

	Not adequate	Adequate	Total
Responsiveness to my issues	8%	92%	86
Informative content	11%	89%	85
My comfort level discussing issues	17%	83%	86
Adequacy of visits	22%	78%	83

**F6c: How would you rate your interaction with the APCD/Program Manager in terms of the following?**

	Not adequate	Adequate	Total
Responsiveness to my issues	11%	89%	87
Informative content	16%	84%	86
My comfort level discussing issues	13%	87%	86
Adequacy of visits	14%	86%	85

**F6d: How would you rate your interaction with the PCMO in terms of the following?**

	Not adequate	Adequate	Total
Responsiveness to my issues	8%	92%	86
Informative content	7%	93%	86
My comfort level discussing issues	12%	88%	86
Adequacy of visits	5%	95%	85

**F6e: How would you rate your interaction with the Safety and Security Coordinator in terms of the following?**

	Not adequate	Adequate	Total
Responsiveness to my issues	10%	90%	87
Informative content	5%	95%	88
My comfort level discussing issues	3%	97%	87
Adequacy of visits	6%	94%	85

**F6f: How would you rate your interaction with the Training Manager in terms of the following?**

	Not adequate	Adequate	Total
Responsiveness to my issues	17%	83%	88
Informative content	10%	90%	88
My comfort level discussing issues	18%	82%	88
Adequacy of visits	16%	84%	81

**F6g: How would you rate your interaction with administrative staff in terms of the following?**

	Not adequate	Adequate	Total
Responsiveness to my issues	0%	100%	88
Informative content	1%	99%	86
My comfort level discussing issues	5%	95%	87
Adequacy of visits	7%	93%	83

**F6h: How would you rate your interaction with other post staff (please specify) in terms of the following?**

	Not adequate	Adequate	Total
Responsiveness to my issues	27%	73%	15
Informative content	15%	85%	13
My comfort level discussing issues	18%	82%	11
Adequacy of visits	33%	67%	12

**F7: To what extent is your CD aware of Volunteer issues and concerns through interactions with Volunteers?**

	Not at all	Minimally	Adequately	Considerably	Completely	Total
F7			6%	33%	62%	89

**F8: What is the most effective way you use to communicate with PC staff?**

Most effective	Email/ Internet	70%	62
	Cellphone (voice)	19%	17
	In-person visits	8%	7
	Text messaging	2%	2
	Telephone at residence or work	1%	1
	Other. Please specify		
	Telephone not at residence or work		
	Letters		
	CB radio		
	Total	100%	89

**F8: What is the second most effective way you use to communicate with PC staff?**

Second most effective	Cellphone (voice)	53%	47
	Email/ Internet	24%	21
	Text messaging	12%	11
	Telephone at residence or work	8%	7
	In-person visits	3%	3
	Other. Please specify		
	Telephone not at residence or work		
	Letters		
	CB radio		
	Total	100%	89

**F8: What is the third most effective way you use to communicate with PC staff?**

(C11_THREE) Third most effective	Text messaging	35%	31
	In-person visits	35%	31
	Cellphone (voice)	13%	12
	Telephone at residence or work	7%	6
	Email/ Internet	7%	6
	Other. Please specify	1%	1
	Telephone not at residence or work	1%	1
	CB radio	1%	1
	Letters		
	Total	100%	89

**F9: How do you rate the effectiveness of your communication resources for contacting in-country PC staff?**

	Very poor	Poor	Adequate	Good	Excellent	Total
F9			7%	27%	66%	89

## **G. Your Safety and Security**

*This section reports on how safe and informed about their safety Volunteers feel. Their experiences with reported and unreported crimes are summarized.*

### **G1: How safe do you feel...?**

	Not at All Safe	Often Safe	Adequately Safe	Usually Safe	Very Safe	Total
Where you live			9%	30%	61%	88
Where you work			3%	25%	72%	88
When you travel in-country		6%	24%	52%	18%	88
City where main Peace Corps office is located	2%	2%	30%	38%	28%	88

### **G2: Please indicate the number of times you experienced the following types of discrimination/harassment.**

	Never	Once	2-5 times	6-10 times	11-25 times	26+ times	Total
Age	90.7%	1.3%	5.3%		2.7%		75
Anti-American	62.3%	13.0%	18.2%	2.6%	2.6%	1.3%	77
Disability	100.0%						73
Gender	71.6%	4.1%	9.5%	8.1%	2.7%	4.1%	74
Racial/color	91.7%			2.8%	1.4%	4.2%	72
Religious	84.7%	2.8%	8.3%	2.8%		1.4%	72
Sexual (verbal)	65.8%	5.3%	10.5%	10.5%	2.6%	5.3%	76
Sexual (physical)	74.3%	13.5%	12.2%				74
Sexual orientation	94.2%			2.9%	1.4%	1.4%	69

**G2: Please indicate the number of times you reported discrimination/harassment events to PC.**

	Never	Once	2-5 times	6-10 times	11-25 times	26+ times	Total
Age	100.0%						4
Anti-American	88.0%	8.0%	4.0%				25
Gender	85.7%	9.5%		4.8%			21
Racial/color	100.0%						6
Religious	77.8%	22.2%					9
Sexual (verbal)	72.0%	16.0%	8.0%			4.0%	25
Sexual (physical)	35.0%	40.0%	25.0%				20
Sexual orientation	100.0%						4

**G3: Please indicate the number of times you experienced the following types of crimes.**

	Never	Once	2-5 times	6-10 times	11-25 times	26+ times	Total
Burglary	98.6%	1.4%					74
Theft	71.8%	24.4%	3.8%				78
Robbery	90.8%	7.9%		1.3%			76
Physical assault	84.0%	14.7%	1.3%				75
Aggravated assault	98.6%	1.4%					72
Sexual assault	93.2%	5.4%	1.4%				74
Rape	100.0%						73

**G3: Please indicate the number of times you reported the following crimes to Peace Corps.**

	Never	Once	2-5 times	6-10 times	11-25 times	26+ times	Total
Burglary		100.0%					1
Theft	33.3%	57.1%	9.5%				21
Robbery	16.7%	83.3%					6
Physical assault	36.4%	63.6%					11
Aggravated assault	100.0%						1
Sexual assault	50.0%	25.0%	25.0%				4



**G4a: If you did not report your experience with burglary, please your reason(s) for not reporting.**

	PCV Responses	% Reason Not Rptd	Total PCVs Responding
\$NoRpBurg    Other	1	100%	
I did not think the PC could help			
I believed it could result in changing sites			
I felt it was too minor or common to report			
Concerns of a possible breach in confidentiality			
Reporting might result in disciplinary action against me			
It might hurt my relationship with the community			
Total			1

\*Percents may total to more than 100% since Volunteers were asked to "mark all that apply."

**G4b: If you did not report your experience with theft, please your reason(s) for not reporting.**

		PCV Responses	% Reason Not Rptd	Total PCVs Responding
\$NoRpTheft	I felt it was too minor or common to report	8	73%	
	I did not think the PC could help	3	27%	
	Reporting might result in disciplinary action against me	1	9%	
	Other	1	9%	
	I believed it could result in changing sites			
	Concerns of a possible breach in confidentiality			
	It might hurt my relationship with the community			
	Total			

\*Percents may total to more than 100% since Volunteers were asked to "mark all that apply."

**G4c: If you did not report your experience with robbery, please your reason(s) for not reporting.**

		PCV Responses	% Reason Not Rptd	Total PCVs Responding
\$NoRpRobb	I felt it was too minor or common to report	1	50%	
	Other	1	50%	
	I did not think the PC could help			
	I believed it could result in changing sites			
	Concerns of a possible breach in confidentiality			
	Reporting might result in disciplinary action against me			
	It might hurt my relationship with the community			
	Total			

\*Percents may total to more than 100% since Volunteers were asked to "mark all that apply."

**G4d: If you did not report your experience with physical assault, please your reason(s) for not reporting.**

	PCV Responses	% Reason Not Rptd	Total PCVs Responding
\$NoRpPhAs			
I felt it was too minor or common to report	8	89%	
It might hurt my relationship with the community	1	11%	
Other	1	11%	
I did not think the PC could help			
I believed it could result in changing sites			
Concerns of a possible breach in confidentiality			
Reporting might result in disciplinary action against me			
Total			9

\*Percents may total to more than 100% since Volunteers were asked to "mark all that apply."

**G4: If you did not report your experience with aggravated assault, please your reason(s) for not reporting.**

	PCV Responses	% Reason Not Rptd	Total PCVs Responding
\$NoRpAgAs    Other	1	100%	
I did not think the PC could help			
I believed it could result in changing sites			
I felt it was too minor or common to report			
Concerns of a possible breach in confidentiality			
Reporting might result in disciplinary action against me			
It might hurt my relationship with the community			
Total			1

\*Percents may total to more than 100% since Volunteers were asked to "mark all that apply."

**G4e: If you did not report your experience with sexual assault, please your reason(s) for not reporting.**

	PCV Responses	% Reason Not Rptd	Total PCVs Responding
\$NoRpSxAs I felt it was too minor or common to report	2	40%	
Other	2	40%	
I did not think the PC could help	1	20%	
I believed it could result in changing sites	1	20%	
Concerns of a possible breach in confidentiality	1	20%	
Reporting might result in disciplinary action against me			
It might hurt my relationship with the community			
Total			5

\*Percents may total to more than 100% since Volunteers were asked to "mark all that apply."

**G4f: If you did not report your experience with rape, please your reason(s) for not reporting.**

	PCV Responses	% Reason Not Rptd	Total PCVs Responding
\$NoRpRape    Other	1	100%	
I did not think the PC could help			
I believed it could result in changing sites			
I felt it was too minor or common to report			
Concerns of a possible breach in confidentiality			
Reporting might result in disciplinary action against me			
It might hurt my relationship with the community			
Total			1

\*Percents may total to more than 100% since Volunteers were asked to "mark all that apply."

## **H. Volunteers Working in HIV/AIDS**

*This section reports Volunteers' involvement in HIV/AIDS and their perceived effectiveness of their HIV/AIDS related activities.*

**H1: Which of the following best describes your involvement in HIV/AIDS activities?**

	HIV/AIDS work is my primary assignment.	HIV/AIDS work is part of my secondary activities.	Involved in HIV/AIDS efforts, not primary/secondary work	Not involved in any HIV/AIDS related activities	Total
H1	1%	2%	8%	89%	87

**H2: How well has PC training prepared you to undertake your HIV/AIDS activities?**

	Not at all	Poorly	Adequately	Well	Very well	NA	Total
H2	9%	45%		18%		27%	11

**H3: In working with HC individuals or groups, how would you rate the effectiveness of your specific HIV/AIDS activities? (Including the "Don't Know" responses)**

	Seldom effective	Sometimes effective	Often effective	Almost always effective	Don't know	Total
H3		56%	22%	11%	11%	9

**H3: In working with HC individuals or groups, how would you rate the effectiveness of your specific HIV/AIDS activities? (Excluding the "Don't Know" responses)**

	Seldom effective	Sometimes effective	Often effective	Almost always effective	Total
H3		62%	25%	12%	8



## **I. Your Life in the Peace Corps**

*This section reports on Volunteers' descriptions of and adjustments to their living conditions, including stress factors and how Volunteers cope with stress.*

### **I1: Have you lived with a host country individual or family?**

	Never lived with a host country individual or family	Yes, I lived with a host country individual or family only	Yes, in my community (not during PST).	Yes, both during PST and later in my community.	Total
I1	1%	55%		44%	88

### **I2: How often do you interact with HCNs in community/family social events?**

	Daily	Several times a week	Weekly	Several times a month	Monthly	Less than once a month	Total
I2	19%	20%	28%	23%	7%	2%	88

### **I3: How well can you communicate in the language used by most people in your community?**

	Not at all	Poorly	Adequately	Well	Very well	Total
I3		17%	42%	20%	20%	88

### **I4: Do you have the following at your worksite?**

	Never	Sometimes or more often	Total
Electricity		100%	88
Running water	3%	97%	88

**I4: Do you have the following at your residence?**

	Never	Sometimes or more often	Total
Electricity		100%	87
Running water		100%	85

**I5: How well do your PC experiences match the expectations you had before you became a Volunteer?**

	Not at all	Minimally	Moderately	Considerably	Exceptionally	Total
I5	6%	27%	39%	22%	7%	88

**17: To what extent do the following create stress and/or emotional health issues for you?**

	Not at all stressful 1	2	3	4	Exceptionally stressful 5	NA	Total
Cultural issues	15%	30%	37%	18%			87
Dealing with violence in country (e.g., civil unrest, domestic violence, corporal punishment)	50%	19%	8%	8%		15%	88
Health/medical problems	29%	31%	25%	13%		2%	87
Issues including family, friends, loved ones in U.S.	20%	23%	36%	16%	3%	1%	88
Isolation/loneliness	20%	24%	26%	25%	5%		87
Local language	10%	31%	33%	22%	3%	1%	88
Primary assignment	8%	28%	26%	30%	8%		88
Romantic relationships in-country	47%	17%	18%	3%		15%	88
Interactions with other Volunteers	43%	33%	19%	3%		1%	88
Interactions with PC Staff	53%	31%	14%	2%			88
Safety and security	43%	42%	10%	3%		1%	88
Other: Please specify below	13%			7%	20%	60%	15

**18: Please mark all of the typical ways in which you cope with stress.**

	PCV Responses	% Using This Stress Reducer	Total PCVs Responding
\$18LessStress	Talk with friends and family in US	75	88%
	Pursue personal hobbies	74	87%
	Do sports	66	78%
	Talk with PCVs outside my community	60	71%
	Leave the community for a time	58	68%
	Talk with co-workers or friends (not PCVs)	55	65%
	Get involved in other projects	55	65%
	Talk with PCVs in my community	50	59%
	Talk with PC in-country staff	31	36%
	Meditate	24	28%
	Pray	16	19%
	Talk with my host family	13	15%
	Do other activity (specify)	12	14%
	Talk with Office of Special Services staff		
	Total		85

\*Percents total to more than 100% since Volunteers were asked to "mark all that apply."

**I8: Others I talk with to reduce stress**

	Percent	Number
I8.OTHR.S.TEXT		
Open-ended results. Not responsive to request.		
Total	100%	89

**I8: Other activities to reduce stress**

	Percent	Number
I8.OTHR.ACT.TEXT2		
Open-ended results. Not responsive to request.		
Total	100%	89

**I8: When asked about ways of coping with stress, Volunteers who answered "No stress"**

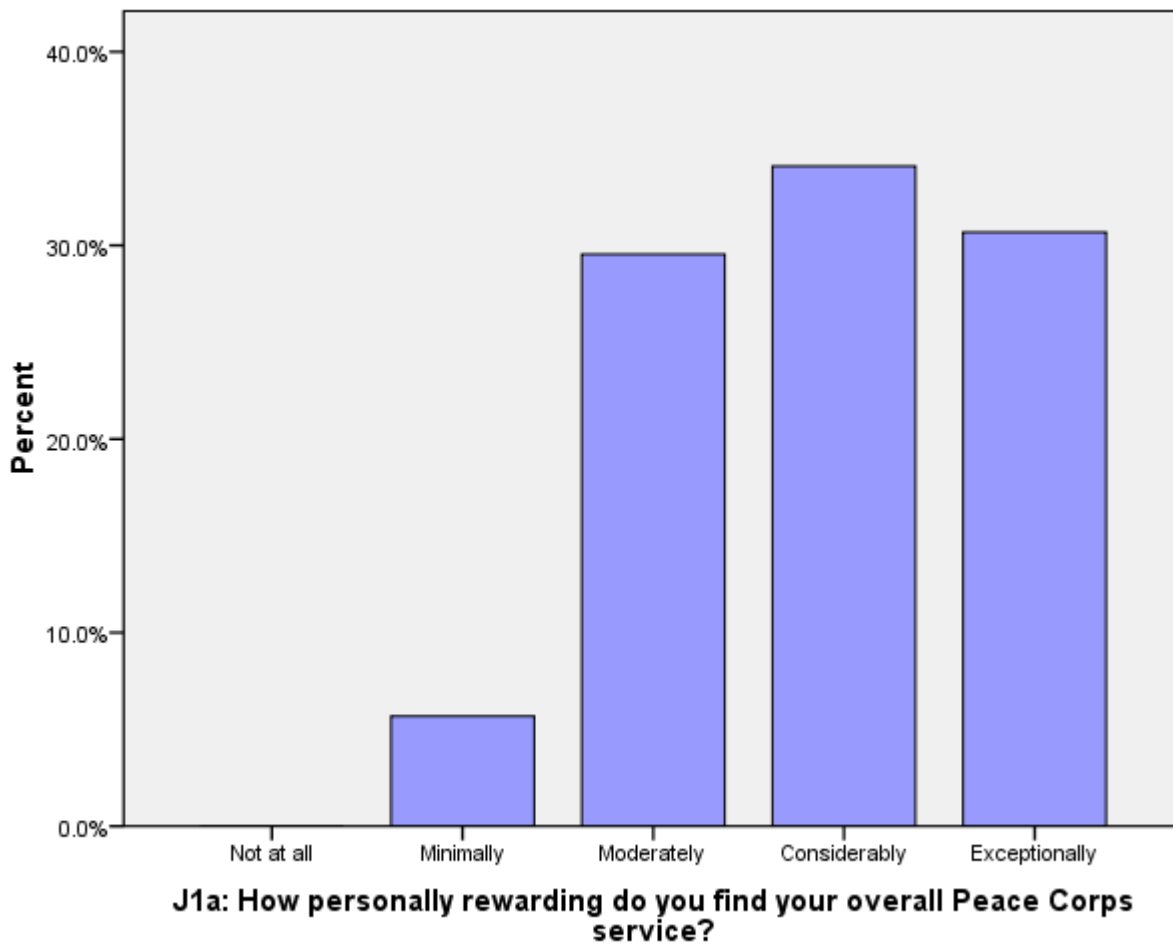
	No	Yes, I have no stress	Total
I8.NOSTRESS	97%	3%	89

## J. Overall Assessment of Peace Corps Service

This section reports Volunteers' level of satisfaction with their Peace Corps service and their expectations about completing their service.

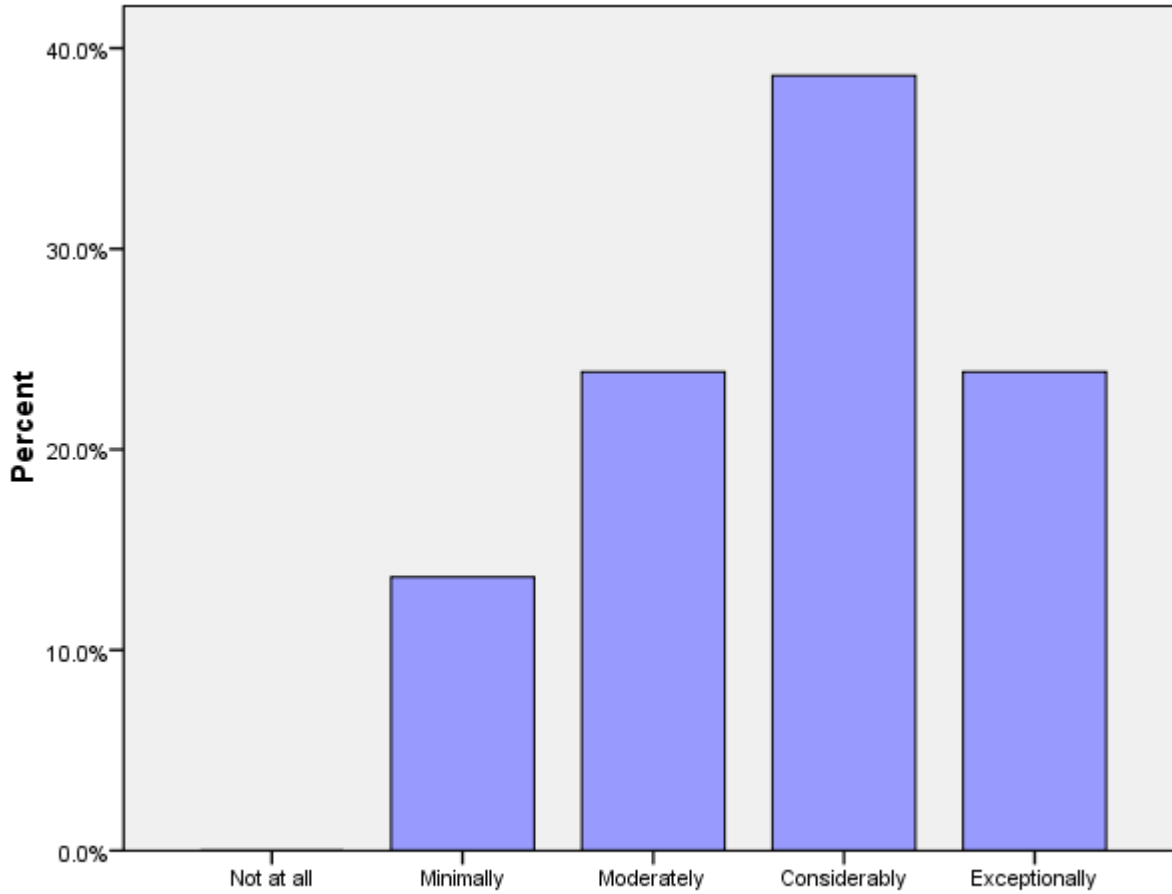
**J1a: How personally rewarding do you find your overall Peace Corps service?**

	Not at all	Minimally	Moderately	Considerably	Exceptionally	Total
J1A		6%	30%	34%	31%	88



**J1b: How personally rewarding do you find your community involvement?**

	Not at all	Minimally	Moderately	Considerably	Exceptionally	Total
J1B		14%	24%	39%	24%	88

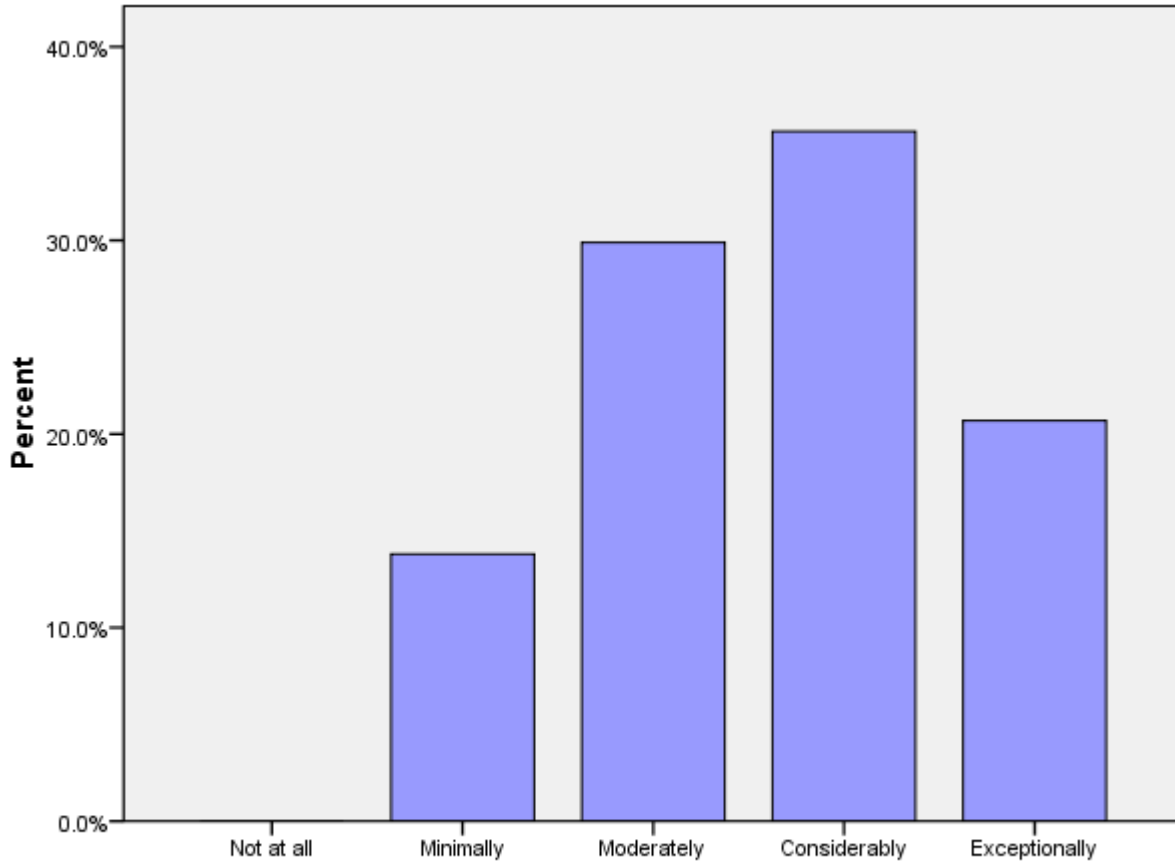


**J1b: How personally rewarding do you find your community involvement?**



**J1c: How personally rewarding do you find your experience with other Volunteers?**

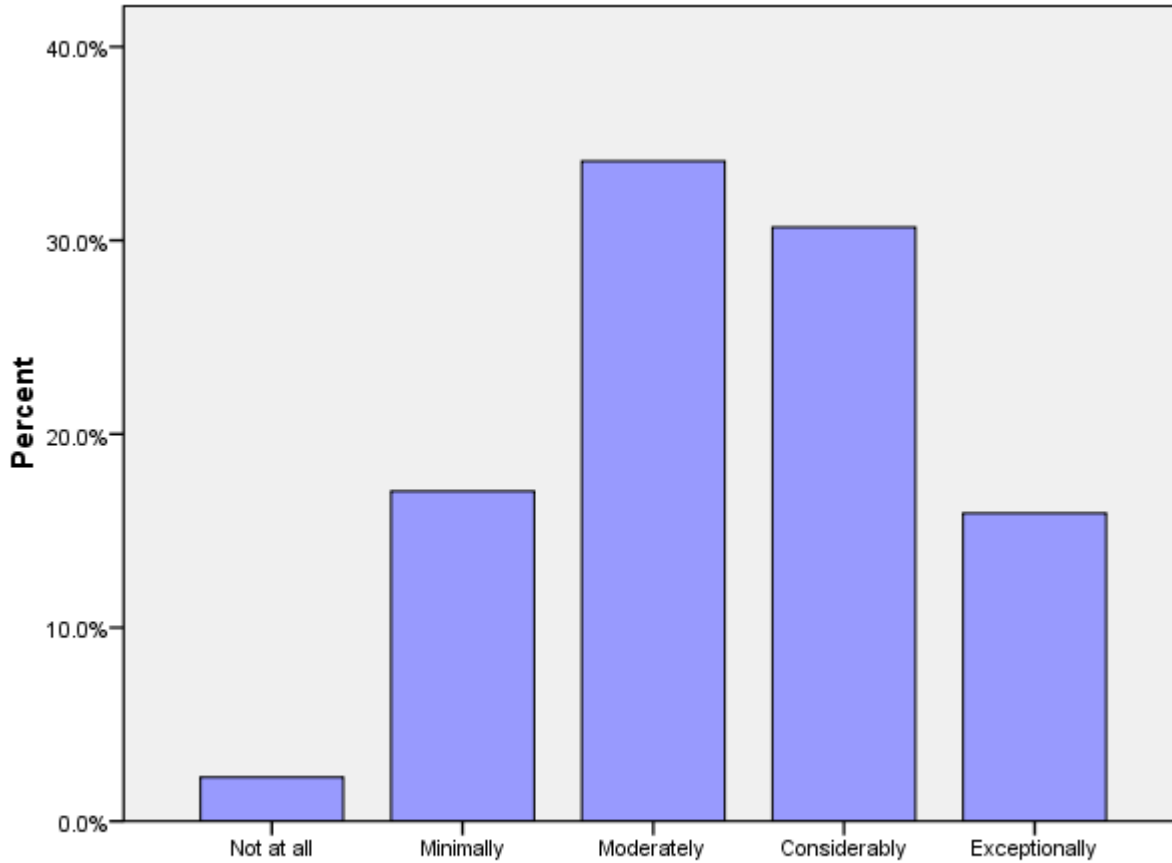
	Not at all	Minimally	Moderately	Considerably	Exceptionally	Total
J1C		14%	30%	36%	21%	87



**J1c: How personally rewarding do you find your experience with other Volunteers?**

**J1d: How personally rewarding do you find your work with counterparts/community partners?**

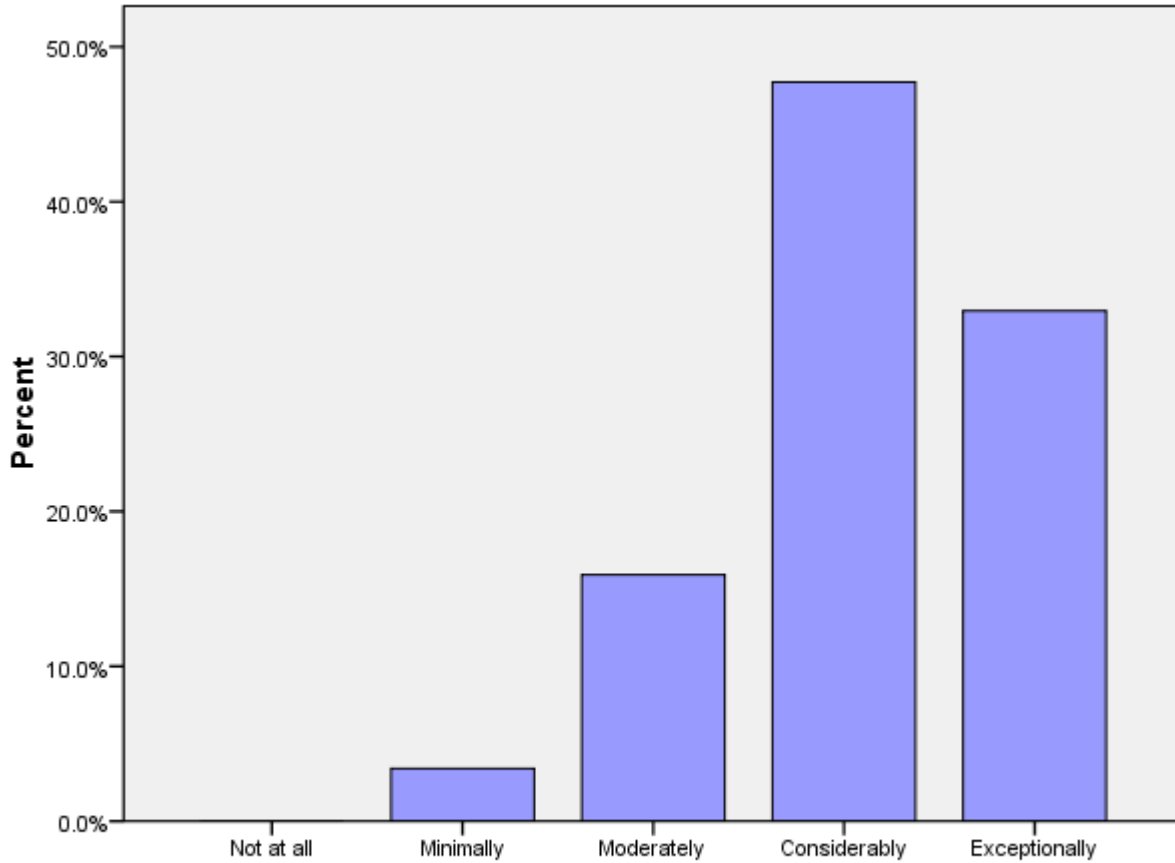
	Not at all	Minimally	Moderately	Considerably	Exceptionally	Total
J1D	2%	17%	34%	31%	16%	88



**J1d: How personally rewarding do you find your work with counterparts/community partners?**

**J1e: How personally rewarding do you find your experience with other HCNs?**

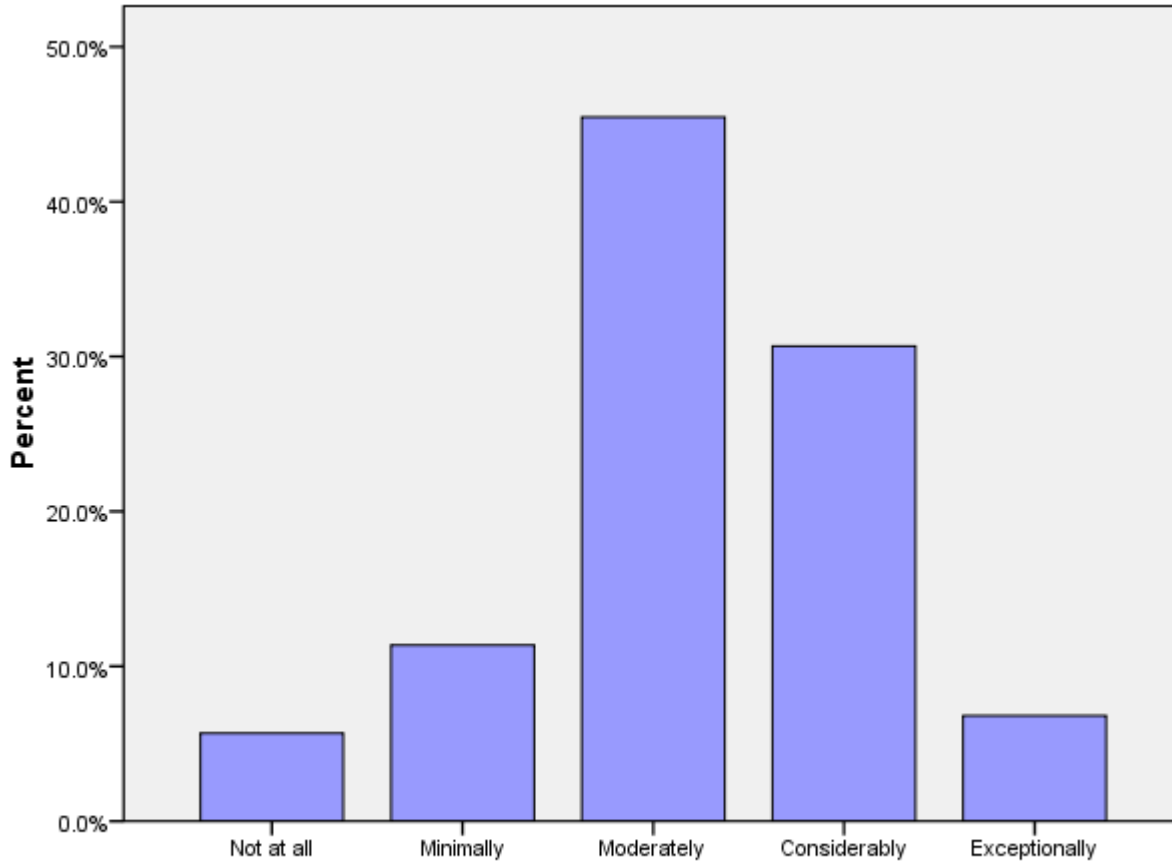
	Not at all	Minimally	Moderately	Considerably	Exceptionally	Total
J1E		3%	16%	48%	33%	88



**J1e: How personally rewarding do you find your experience with other HCNs?**

**J2a (PCVs at post 9 months+ months): Please rate how well you think you achieved Goal 1.**

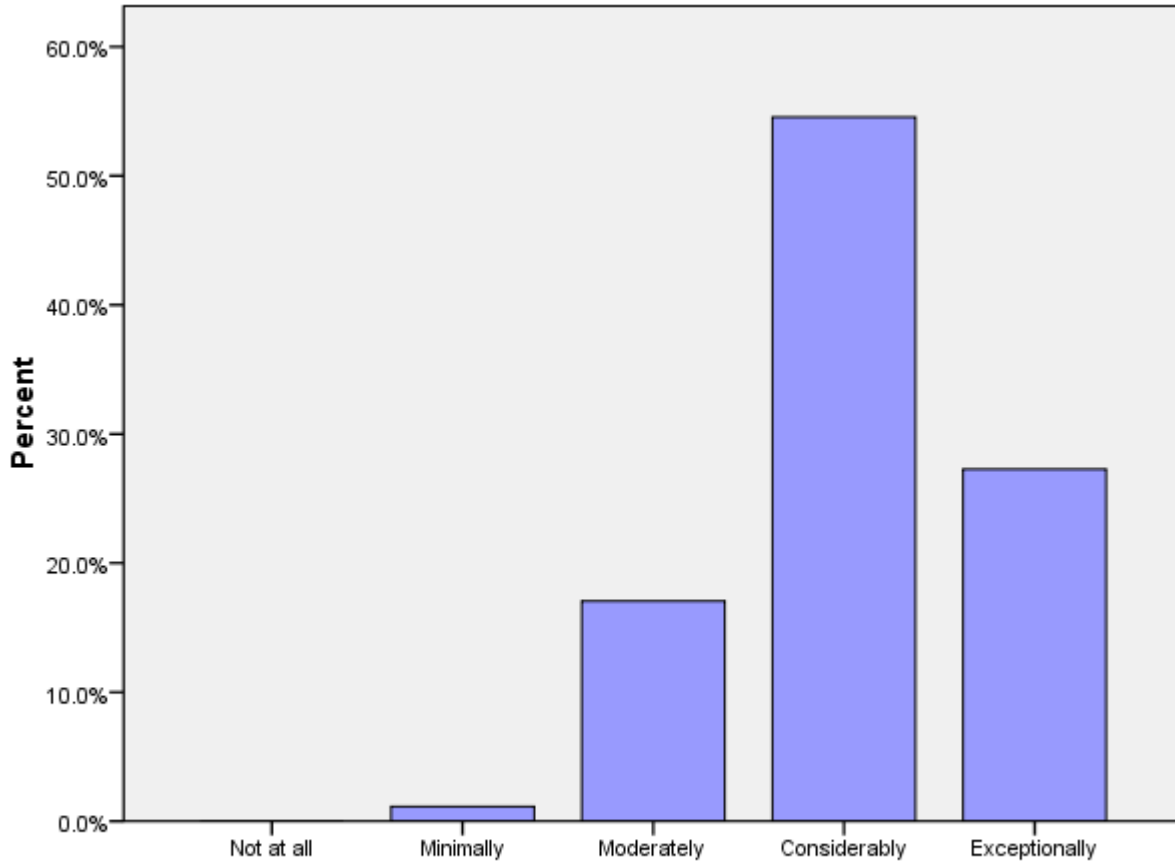
	Not at all	Minimally	Moderately	Considerably	Exceptionally	Total
J2A	6%	11%	45%	31%	7%	88



**J2a (PCVs at post 9 months+ months): Rate how well you think you achieved Goal 1.**

**J2b: (PCVs at post 9 months+ months): Please rate how well you think you achieved Goal 2.**

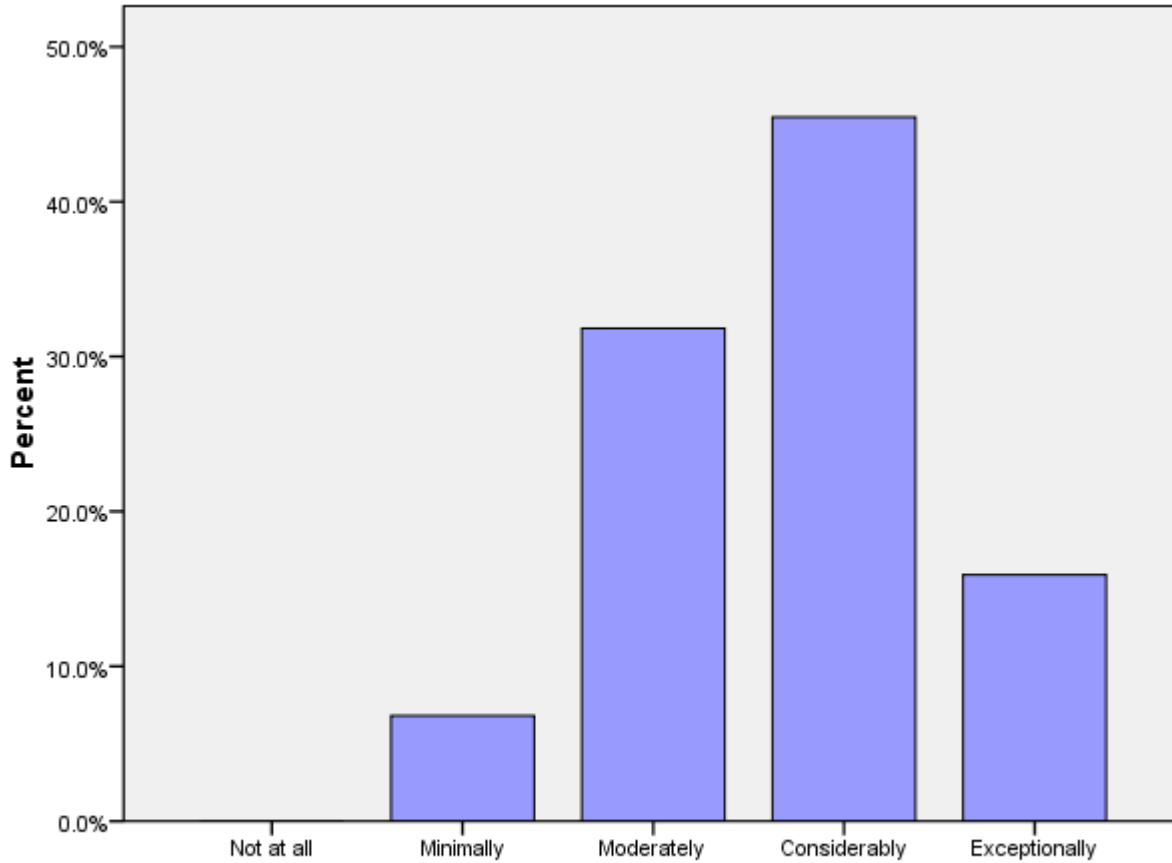
	Not at all	Minimally	Moderately	Considerably	Exceptionally	Total
J2B		1%	17%	55%	27%	88



**J2b (PCVs at post 9 months+ months): Rate how well you think you achieved Goal 2.**

**J2c (PCVs at post 9 months+ months): Please rate how well you think you achieved Goal 3.**

	Not at all	Minimally	Moderately	Considerably	Exceptionally	Total
J2C		7%	32%	45%	16%	88



**J2c (PCVs at post 9 months+ months): Please rate how well you think you achieved Goal 3.**

**J3: Today, would you make the same decision to join the Peace Corps?**

	No	Not likely	Possibly	Probably	Definitely	Total
J3		5%	11%	14%	70%	88

**J4: Would you recommend Peace Corps service to others you think are qualified?**

	No	Not likely	Possibly	Probably	Definitely	Total
J4		2%	15%	14%	69%	88

**J5: Do you intend to complete your Peace Corps service?**

	No	Not sure	Yes	Might extend	Total
J5	2%	2%	76%	20%	87

**J6: Would your host country benefit most if the Peace Corps program was---?**

	Discontinued	Reduced	Refocused/redesig ned	Maintained as is	Expanded	Total
J6	15%	8%	48%	22%	7%	87

## **K. Activities After Peace Corps Service**

*This section reports on Volunteers' plans for after they have completed their Peace Corps Service.*

### **K1a: What are your plans after your Peace Corps service? Work in government.**

Government			
In the U.S.	In your host country	In another country	N
86%	0%	14%	14

\* Percent of cases was used. Percentages will be greater than 100 since Volunteers were asked to select all that applied.

### **K1b: What are your plans after your Peace Corps service? Work in the private sector.**

Private Sector			
In the U.S.	In your host country	In another country	N
78%	0%	39%	18

\* Percent of cases was used. Percentages will be greater than 100 since Volunteers were asked to select all that applied.

### **K1c: What are your plans after your Peace Corps service? Work for an NGO.**

NGO			
In the U.S.	In your host country	In another country	N
72%	17%	44%	18

\* Percent of cases was used. Percentages will be greater than 100 since Volunteers were asked to select all that applied.



**K1d: What are your plans after your Peace Corps service? Work for PC Response.**

Peace Corps Response			
In the U.S.	In your host country	In another country	N
38%	0%	75%	8

\* Percent of cases was used. Percentages will be greater than 100 since Volunteers were asked to select all that applied.

**K1e: What are your plans after your Peace Corps service? Continue to participate in volunteer activities.**

Volunteer Activities			
In the U.S.	In your host country	In another country	N
85%	12%	38%	26

\* Percent of cases was used. Percentages will be greater than 100 since Volunteers were asked to select all that applied.

**K1f: What are your plans after your Peace Corps service? Graduate school/academic credentialing.**

Graduate School			
In the U.S.	In your host country	In another country	N
87%	0%	20%	15

\* Percent of cases was used. Percentages will be greater than 100 since Volunteers were asked to select all that applied.

**K1g: What are your plans after your Peace Corps service? Travel.**

Travel			
In the U.S.	In your host country	In another country	N
75%	21%	62%	24

\* Percent of cases was used. Percentages will be greater than 100 since Volunteers were asked to select all that applied.

**K1h: What are your plans after your Peace Corps service? Other.**

Other			
In the U.S.	In your host country	In another country	N
100%	0%	0%	1

\* Percent of cases was used. Percentages will be greater than 100 since Volunteers were asked to select all that applied.

**K2: How prepared do you feel to share your Peace Corps experience and knowledge of your host country with others in the United States when you return?**

	Not at all	Minimally	Moderately	Considerably	Total
How prepared do you feel to share your Peace Corps experience and knowledge of your host country with others in the United States when you return?	0%	6%	22%	72%	36

**K3: How well do you feel Peace Corps has prepared you for life in the U. S. after you return?**

	Not at all	Minimally	Moderately	Considerably	Exceptionally	Total
How well do you feel Peace Corps has prepared you for life in the U. S. after your return?	3%	6%	40%	49%	3%	35

**K6: Have your life/career goals changed because of your Peace Corps service?**

	No	Yes	Total
Have your life/career goals changed because of your Peace Corps service?	59%	41%	34

**K7: How well informed are you about the following opportunities for returned Volunteers:**

	Not informed	Somewhat informed	Well informed	N
Peace Corps Response	0%	41%	59%	34
Peace Corps' Fellows/USA program	6%	47%	47%	34
Noncompetitive eligibility	0%	47%	53%	34
RPCV Career Center in Washington, D.C.	15%	53%	32%	34
Returned Volunteer Services	9%	65%	26%	34

**K8: How did you first learn about the Fellows/USA program?**

Learn about Fellows/USA program	PC Website	68%
	At COS Conference	32%
	From a recruiter	29%
	Word of mouth	19%
	From staff in the host country's PC office	19%
	Mid-service mailing from PC	13%
	At PST	10%
	Hotline	6%
	University website	6%
	At IST	3%
	Other	3%
	At post's information resource center	0%
	N	31

\* Percent of cases was used. Percentages will be greater than 100 since Volunteers were asked to select all that applied.

**K9: Which of the following resources do you think will be helpful as you exit  
Peace Corps service?**

K9 Resources	Applying to federal government with RPCV noncompetitive eligibility	60%	
	RPCV Handbook	57%	
	RPCV career conferences	54%	
	Career Resource Manual	51%	
	Electronic newsletter with job postings and career advice	51%	
	List of RPCVs willing to talk to me about their careers	49%	
	Connection with RPCVs through a mentoring program	43%	
	Access to free job bulletins	43%	
	Guide to speaking about my PC service to others (third goal)	40%	
	RPCV job search webinars	31%	
	NOT SURE	17%	
	Self-assessment software (SIGI 3)	11%	
	Other	3%	
	N		35

\* Percent of cases was used. Percentages will be greater than 100 since Volunteers were asked to select all that applied.

**K10: Which of the following third goal (helping promote a better understanding of peoples on the part of Americans) activities do you plan to do when you return to the U. S.?**

K10 Third Goal	Continue with volunteerism and service learning	89%	
	Speak to school age children about my experience	69%	
	Speak to a group of adults about my experience	57%	
	Join a RPCV group	57%	
	Participate in PC Week	40%	
	Write stories from my PC service on my own	40%	
	Obtain and use PC third goal resources	26%	
	NOT SURE	9%	
	Other	3%	
	Write stories from my PC service in conjunction with CWWS	0%	
	N		35

\* Percent of cases was used. Percentages will be greater than 100 since Volunteers were asked to select all that applied.