



**Peace Corps Volunteer
2009 Annual Volunteer Survey**

**Uganda
October 8, 2009**

Office of Strategic Information, Research and Planning

Table of Contents

Introduction to the 2009 Annual Volunteer Survey Report	3
Overview of the Post's 2009 Volunteer Survey Respondents.....	4
A. Applying to the Peace Corps.....	6
B. Preparation for the Peace Corps.....	9
C. Your Peace Corps Assignment	10
D. Training for Peace Corps Assignment	15
E. Volunteer Assignment Goals and Impact.....	18
F. Peace Corps Support.....	26
G. Your Safety and Security	32
H. Volunteers Working in HIV/AIDS	41
I. Your Life in the Peace Corps	42
J. Overall Assessment of Peace Corps Service	46
K. Activities After Peace Corps Service.....	55

Introduction to the 2009 Annual Volunteer Survey Report

This country report contains the tables and charts from the Volunteers in your country who completed the 2009 Annual Volunteer Survey (AVS). The results provide a picture of the activities, experiences and views of Peace Corps Volunteers in 2009. The results show areas where Volunteers' needs are met and identify areas where improvements may be needed. The survey was fielded from May through August 2009.

A core set of questions was asked of all Volunteers. For the first time, Volunteers were also asked a series of questions relevant to their time in country:

- Volunteers in country 8 or less months were asked about applying to and preparing for the Peace Corps.
- Volunteers in country 18 or less months were asked about the effectiveness of their pre-service training (PST).
- Volunteers in country 19 or more months were asked about their post-service plans, as well as the Peace Corps' resources for their post-service transition.

Tables and graphs are labeled by survey section and the survey question. The tables show the percent of post respondents that selected each choice and the total number of post respondents that answered the question. The number of responses for each question will vary, depending on:

- whether the question was asked of all Volunteers or only the Volunteers in-country a certain number of months and
- how many of the Volunteers who were "eligible" to answer the question did respond.

Most survey questions asked respondents to select only one from a set of choices. The percentages for the "select one" responses add up to 100 percent. Other questions asked Volunteers to "mark all that apply" in situations, for example, where it is likely that respondents are involved in more than one secondary activity. The percentages of the "mark all that apply" responses will total more than 100 percent; each percentage equals the number of respondents selecting that choice divided by the number of respondents who answered the question.

Posts are encouraged to compare these 2009 results with the 2006 and 2008 survey results to note trends and changes over time. Because questions are revised from one survey to the next, a crosswalk between the 2008 and 2009 questions is posted on the OSIRP intranet page under 2009 AVS Reports "Reference Documents." The earlier 2008 survey global, regional and post reports are also posted on the OSIRP Intranet page.

Volunteers' extensive narrative responses to the 29 open-ended questions on the survey are in the post's 2009 Annual Volunteer Survey Open Ended Responses report. All Volunteers' narrative responses to key questions will be analyzed for global themes and presented in a later report.

The number of surveys for each post includes surveys submitted online by Volunteers and completed paper surveys sent to the Peace Corps headquarters for hand-entry into the online survey system. The final count may include mostly completed partial surveys added to the final dataset after the survey closed.

Overview of the Post's 2009 Volunteer Survey Respondents

This overview presents basic information about the characteristics of Volunteers who completed the 2009 Annual Volunteer Survey at post.

Completed Surveys by Months in Country

	8 months or less		9 to 18 months		19 months or more		Total	
	Number	Percent	Number	Percent	Number	Percent	Number	Percent
Months3grp	10	23%	27	63%	6	14%	43	100%

L1: What is your age?

	20-29	30-49	50+	Total
AGE3grp	87%	5%	8%	38

L2: What is your gender?

	Female	Male	Total
GENDER	69%	31%	39

Completed surveys by project.

	Count	Column N %
Community Health and Economic Development Project	30	70%
Primary Education Teacher Training	6	14%
Other. Please specify	7	16%
Total	43	100%

C2: Which best describes the focus of your primary assignment/work?

		Percent	Number
C2	HIV/AIDS	14%	6
	NGO development	14%	6
	Business education/advising	12%	5
	Health extension	12%	5
	Other education	12%	5
	Teacher training	9%	4
	Math/science teaching	9%	4
	Community development	9%	4
	Youth development	5%	2
	Other: Please specify	2%	1
	Information & communications technology (ICT)	2%	1
	Urban & regional planning/municipal development		
	Water sanitation		
	Forestry/parks		
	Environmental education		
	English teaching		
	Agroforestry		
	Agriculture/fish/livestock		
	Total	100%	43

C2.TEXT: Which of the following initiatives does your primary work include? Other (specify)

		PERCENT	NUMBER
C2.TEXT	Open-ended results. Not responsive to request.		
	Total	100%	43

A. Applying to the Peace Corps

This section reports Volunteers' motivations in applying and accepting a Peace Corps assignment.

A1: How important were the following factors in accepting a PC assignment?

	Not Important	Somewhat important	Important	NA	Total
Different culture		10%	80%	10%	10
Work experience	10%	50%	30%	10%	10
Help others			100%		10
International experience		10%	90%		10
Language	30%	30%	30%	10%	10
Personal growth		20%	70%	10%	10
U. S. job market	60%	20%	10%	10%	10
Serve my country	20%	30%	40%	10%	10
Travel/adventure		20%	80%		10
Other: Please specify below			40%	60%	5

A1_OTHER: How important were the following factors in accepting a PC assignment? Other (specify)

	PERCENT	NUMBER
A1_OTHER Open-ended results. Not responsive to request.		
Total	100%	43

A2. What prompted you to apply to the PC? Mark all that apply.

		PCV Responses	% Involved in Initiative	Total PCVs Responding
What prompted you to apply to PC	Personal interest in the Peace Corps	9	90%	
	Returned Peace Corps Volunteer (e.g., someone you met or know personally)	7	70%	
	Article or book about the Peace Corps	4	40%	
	Peace Corps website	4	40%	
	Peace Corps recruiter	2	20%	
	Peace Corps campus or community information session	2	20%	
	Returned Peace Corps Volunteer who spoke to your school or group about the Peace Corps	1	10%	
	Radio, TV, or print advertisement	1	10%	
	Peace Corps material in the mail	1	10%	
	Other: Please specify	1	10%	
	Total			

Percents may total to more than 100% since Volunteers were asked to "Mark all that apply."

A2.OTHER.TEXT: What prompted you to apply to the PC? Other (specify)

	PERCENT	NUMBER
A2.OTHER.TEXT	Open-ended results. Not responsive to request.	
Total	100%	43

B. Preparation for the Peace Corps

This section reports on Volunteers' assessment of the materials and information available before their service.

B1: How useful was the information on the PC website in preparing you for the realities of living and working as a Volunteer?

	Not at all 1	2	3	4	Extremely 5	Don't know (did not access information)	Total
B1		10%	80%			10%	10

B2: How useful were the PC materials about your country in helping you prepare for your service?

	Not at all 1	2	3	4	Extremely 5	Don't know (did not access information)	Total
B2		20%	60%	20%			10

B3: How useful were the materials you received from the PC about your primary assignment in helping you prepare for your service?

	Not at all 1	2	3	4	Extremely 5	Don't know (did not access information)	Total
B3	10%	40%	30%	20%			10

B4: How useful were the materials you received from the PC regarding the need for flexibility in adapting to your work?

	Not at all 1	2	3	4	Extremely 5	Don't know (did not access information)	Total
B4		10%	30%	30%	10%	20%	10

B7: How prepared do you feel to meet the challenges of PC service?

	Not at all 1	2	3	4	Exceptionally 5	Total
B7				10%	90%	10

C. Your Peace Corps Assignment

This section reports Volunteers' primary assignment work and secondary activities. The term "primary assignment" refers to the Volunteers' assignment which is part of an overall project plan designed by your host country partners and in-country Peace Corps staff.

C3: Which of the following activities does your primary assignment/work include? Mark all that apply.

		PCV Responses	% Involved in Initiative	Total PCVs Responding
\$C3PrmAct	HIV/AIDS	23	53%	
	Working with youth	20	47%	
	Income generation	17	40%	
	Nutrition education	15	35%	
	Working with NGO(s)	15	35%	
	Information and communications technology (ICT)	11	26%	
	Working with special groups (e.g., disabled, elderly, ethnic minorities, orphans)	11	26%	
	Girls' education	10	23%	
	Business advertising	9	21%	
	Water and sanitation	9	21%	
	Child survival	8	19%	
	Mobilize host country nationals (HCNs) to volunteer	8	19%	
	English teaching	7	16%	
	Sports/fitness	6	14%	
	WID/GAD	6	14%	
	World Wise Schools/ Correspondence Match	6	14%	
	Rural development	5	12%	
	Arts	4	9%	
	Community food security (production/marketing)	4	9%	
	Household food security	4	9%	

Library development	4	9%
Literacy	4	9%
Other: Please specify	4	9%
Microenterprise development	3	7%
Natural resources management	3	7%
Urban development/municipal development	3	7%
Environment work	2	5%
Biodiversity conservation	1	2%
Total		43

Percents may total to more than 100% since Volunteers were asked to "Mark all that apply."

C3: Which of the following activities does your primary assignment/work include? Other (specify)

	Column N %	Count	Row N %
C3.OTHER.TEXT Open-ended results. Not responsive to request.			
Total		43	100%

C4: Hours Spent on Primary Assignment During Average Work Week

	None	1-10 hrs	11-20 hrs	21-30 hrs	31-40 hrs	More than 40 hrs	Total
C4Hrs6grp		21%	24%	26%	14%	14%	42

C4: How many hours do you spend on your primary assignment during an average work week?

	All Volunteers	Average	Lowest reported	Highest reported	Did not answer
C4	43	26.1	5	70	1

C5: Which of the following do your secondary activities (other than your primary assignment work) include? Mark all that apply.

		PCV Responses	% Involved in Initiative	Total PCVs Responding
\$C5SecAct	HIV/AIDS	12	38%	
	Income generation	11	34%	
	Working with youth	11	34%	
	Girls' education	9	28%	
	Sports/fitness	8	25%	
	Nutrition education	7	22%	
	Water and sanitation	7	22%	
	Working with special groups (e.g., disabled, elderly, ethnic minorities, orphans)	7	22%	
	World Wise Schools/ Correspondence Match	6	19%	
	Other: Please specify	6	19%	
	Arts	5	16%	
	Business advertising	5	16%	
	English teaching	5	16%	
	Library development	5	16%	
	Child survival	4	12%	
	Information and communications technology (ICT)	4	12%	
	Literacy	4	12%	
	Working with NGO(s)	4	12%	
	Household food security	2	6%	
	Mobilize host country nationals (HCNs) to volunteer	2	6%	
Urban development/municipal development	2	6%		
WID/GAD	2	6%		

Environment work	1	3%
Microenterprise development	1	3%
Natural resources management	1	3%
Rural development	1	3%
Biodiversity conservation		
Community food security (production/marketing)		
Total		32

Percents may total to more than 100% since Volunteers were asked to "Mark all that apply."

C5: Which of the following do your secondary activities include? Other (specify)

	Column N %	Count	Row N %
C5.OTHER.TEXT			
Open-ended results. Not responsive to request.			
Total		43	100%

C5: No Secondary Activities

	Percent	Number
C5.NONE		
No	77%	33
Yes, I have no secondary activities	23%	10
Total	100%	43

C6: Hours Spent on Secondary Activities During Average Work Week

	None	1-10 hrs	11-20 hrs	21-30 hrs	31-40 hrs	More than 40 hrs	Total
C6Hrs6grp		65%	18%	12%	5%		40

C6. How many hours do you spend on secondary activities during an average work week?

	All Volunteers	Average	Lowest reported	Highest reported	Did not answer
C6	43	11.4	1	40	3

C7: How personally satisfying is your--?

	Not at all 1	2	3	4	Exceptionally 5	Total
Primary assignment	12%	16%	28%	28%	16%	43
Secondary project/activities	11%	3%	17%	37%	31%	35

D. Training for Peace Corps Assignment

This section reports Volunteers' assessments of the effectiveness of their Pre-Service Training and In-Service Training at post. In-Service Training (IST) includes: Reconnect; Technical IST; Mid-Service and Close of Service conferences; project management/leadership conferences; and other post-sponsored training sessions.

D1: (PCVs at post 18 months or less) How effective was your Pre-Service Training (PST) in preparing you to--

	Not effective	Poor	Adequate	Effective	Very Effective	NA/No training	Total
Manage cultural differences	3%	11%	35%	38%	14%		37
Deal with adjustment issues	8%	11%	33%	39%	8%		36
Work with counterparts/community partners	19%	30%	38%	8%	3%	3%	37
Use language needed in work and social interactions	11%	38%	24%	16%	11%		37
Perform technical aspects of your work	24%	32%	32%		8%	3%	37
Work on your project goals and objectives	22%	30%	24%	14%	3%	8%	37
Conduct a participatory community needs assessment (e.g., PACA)	16%	19%	30%	22%	11%	3%	37
Monitor your project goals and outcomes	22%	32%	27%	8%	3%	8%	37
Maintain your physical health	3%	8%	22%	14%	46%	8%	37
Maintain your mental/emotional health	6%	14%	25%	28%	17%	11%	36
Maintain your personal safety and security	3%	8%	38%	24%	24%	3%	37

D5: How effective was your In-Service Training (IST) in preparing you to--

	Not effective	Poor	Adequate	Effective	Very Effective	NA/No training	Total
Manage cultural differences	6%	19%	36%	28%	3%	8%	36
Deal with adjustment issues	3%	14%	42%	31%	6%	6%	36
Build and strengthen working relationships with counterparts/community partners	8%	17%	36%	28%	11%		36
Use language needed in work and social interactions	14%	25%	33%	14%	6%	8%	36
Perform technical aspects of your work	8%	25%	36%	14%	11%	6%	36
Work on your project goals and objectives	3%	23%	37%	20%	14%	3%	35
Conduct a participatory community needs assessment (e.g.,PACA)	22%	11%	25%	22%	3%	17%	36
Monitor project goals and outcomes	3%	25%	39%	19%	6%	8%	36
Maintain your physical health		3%	28%	42%	11%	17%	36
Maintain your mental/emotional health		8%	36%	31%	8%	17%	36
Maintain your personal safety and security	3%	17%	25%	36%	8%	11%	36

D8: Did you have this skill before joining the Peace Corps?

	No/ No answer	Yes	Total
Skills specific to my assignment	12	31	43
Assessing community needs	27	16	43
Organizing/implementing community activities	20	23	43
Building capacity of local organizations	31	12	43
Monitoring, reporting, and evaluating my work	9	34	43
Designing and implementing training sessions	25	18	43

D8: Is the skill needed for your Peace Corps work?

	No/ No answer	Yes	Total
Skills specific to my assignment	0	41	41
Assessing community needs	6	36	42
Organizing/implementing community activities	8	34	42
Building capacity of local organizations	12	30	42
Monitoring, reporting, and evaluating my work	2	40	42
Designing and implementing training sessions	7	35	42

D8: Have you had adequate Peace Corps training to acquire the skill?

	No/ No answer	Yes	Total
Skills specific to my assignment	20	8	28
Assessing community needs	12	25	37
Organizing/implementing community activities	16	18	34
Building capacity of local organizations	22	12	34
Monitoring, reporting, and evaluating my work	10	27	37
Designing and implementing training sessions	14	19	33

E. Volunteer Assignment Goals and Impact

This section reports Volunteers' self-assessments of their impact on the individuals and organizations in the communities in which they serve. At the end of this section, Volunteers' third goal activities, participation in Coverdell World Wise School/Correspondence Match (CWWS/CM) and use of Peace Corps resources to support their work are reported in questions.

E1: To what extent does your Volunteer work assignment address the following?

	Not at all 1	2	3	4	Exceptionally 5	NA	Total
Meets the objectives of the project plan	5%	7%	46%	27%	10%	5%	41
Builds local capacity for sustainability	5%	17%	24%	40%	12%	2%	42
Involves local people in planning and implementing activities	2%	10%	36%	33%	19%		42
Complements other local development activities	2%	14%	31%	31%	17%	5%	42
Transfers skills to host country individuals and organizations	2%	7%	36%	26%	26%	2%	42
Mobilizes host country nationals (HCNs) to volunteer	24%	24%	17%	12%	17%	5%	41
Helps promote a better understanding of Americans on the part of the peoples served (goal 2)	5%	14%	14%	40%	24%	2%	42
Helps promote a better understanding of other peoples on the part of Americans (goal 3)	7%	10%	17%	33%	31%	2%	42

E2: To what extent does your host community--?

	Not at all 1	2	3	4	Exceptionally 5	NA	Total
Need the assistance that you provided			17%	50%	33%		6
Want the assistance that you provided				33%	67%		6

E3: How much impact does your assignment have on the capacities of your host counterparts/community partners?

	None 1	2	3	4	Exceptional 5	NA	Total
Ability to access information (e.g., library, Internet, etc.)	7%	28%	21%	19%	14%	12%	43
Leadership skills	5%	9%	26%	42%	14%	5%	43
Planning and management	2%	14%	16%	49%	14%	5%	43
Problem solving/critical thinking	5%	19%	19%	40%	14%	5%	43
Self-esteem	7%	9%	23%	33%	19%	9%	43
Technical skills	2%	17%	22%	37%	15%	7%	41
Use of local resources	5%	16%	28%	33%	12%	7%	43
Use of external resources (e.g., grants, international NGOs)	7%	23%	30%	21%	7%	12%	43
Better understanding of Americans	2%	21%	16%	26%	35%		43
Other: Please specify below	7%					93%	15

E3: How much impact does your assignment have on the capacities of your host counterparts/community partners? Other (specify)

	Column N %	Count	Row N %
E3_OTHER	100%	43	
Total		43	100%

E4: How much impact does your assignment have on the capacities of your host individuals with whom you work?

	None 1	2	3	4	Exceptional 5	NA	Total
Ability to access information (e.g., library, Internet, etc.)	10%	21%	26%	12%	19%	12%	42
Leadership skills	7%	12%	26%	38%	12%	5%	42
Planning and management	7%	21%	19%	36%	5%	12%	42
Problem solving/critical thinking	7%	10%	26%	36%	17%	5%	42
Self-esteem	5%	2%	26%	40%	17%	10%	42
Technical skills	10%	14%	29%	29%	14%	5%	42
Use of local resources	7%	10%	45%	24%	7%	7%	42
Use of external resources (e.g., grants, international NGOs)	24%	14%	29%	17%	2%	14%	42
Better understanding of Americans		19%	10%	33%	36%	2%	42
Other: Please specify below	7%			7%		87%	15

E4: How much impact does your assignment have on the capacities of your host individuals with whom you work? Other (specify)

	Column N %	Count	Row N %
E4_OTHER Open-ended results. Not responsive to request.			
Total		43	100%

E5: To what extent does your assignment enhance the capacities of organizations with whom you work?

	None 1	2	3	4	Exceptional 5	NA	Total
Identifying and prioritizing organizational needs	12%	7%	21%	31%	19%	10%	42
Leadership	10%	17%	21%	31%	14%	7%	42
Management	12%	7%	29%	33%	12%	7%	42
Monitoring and evaluation	10%	17%	24%	29%	12%	7%	41
Planning and implementing organizational activities	7%	12%	21%	31%	21%	7%	42
Teamwork/participatory decision-making	10%	10%	24%	33%	19%	5%	42
Use of local resources	10%	19%	26%	26%	10%	10%	42
Ability to mobilize, manage, and sustain local volunteers	20%	12%	24%	17%	15%	12%	41
Other: Please specify below	9%				9%	82%	11

E5: To what extent does your assignment enhance the capacities of organizations with whom you work? Other (specify)

	Column N %	Count	Row N %
E5_OTHER Open-ended results. Not responsive to request.			
Total		43	100%

E6: How effective have you been in transferring knowledge and skills to help the following persons or groups build their capacities?

	Not at all 1	2	3	4	Exceptionally 5	NA	Total
Your counterpart/community partner	12%	7%	31%	26%	12%	12%	42
Another institution/organization	10%	14%	31%	19%	10%	17%	42
Members of your host community	5%	7%	38%	24%	17%	10%	42
Other: Please specify below	15%				8%	77%	13

E7: To what extent have HC individuals gained a better understanding of Americans? Includes "Too early to tell."

	Not at all	Minimally	Moderately	Considerably	Exceptionally	Too early to tell	Total
E7	0%	9%	21%	47%	16%	7%	43

E7: To what extent have HC individuals gained a better understanding of Americans? Excludes "Too early to tell."

	Not at all	Minimally	Moderately	Considerably	Exceptionally	Total
E7		10%	22%	50%	18%	40

E9. In which of the following third goal activities have you participated during your PC service?

		PCV Responses	% Doing This	Total PCVs Responding
\$E9Goal3Acts	Electronic updates	37	92%	40
	Hosting American visitors	24	60%	
	Hard copy/paper update	22	55%	
	Enrollment in the CWWS/CMS program	15	38%	
	Personal website or blog	15	38%	
	Pen pal program/letter exchange	5	12%	
	While on home leave, spoke at a school or community group	5	12%	
	Other please specify	4	10%	
	Podcasted/created a slide show or video posted online	2	5%	
	Peace Corps Week activities			
	Total			

Percents may total to more than 100% since Volunteers were asked to "Mark all that apply."

E9: When asked about third goal activities, Volunteer answered "No involvement in third goal activities."

	Have done third goal activities	No third goal activities	Total
Peace Corps' third goal is to "help promote a better understanding of other peoples on the part of Americans." In which of the following third goal activities, including your contact with family and friends, have you participated during your Peace Corps	98%	2%	43

E10: Would you recommend participation in the CWWS CMS to other Volunteers?

	I have not participated in CWWS/CM.	I have participated in CWWS/CM & would recommend it	I have participated in CWWS/CM and would NOT recommend it	Total
E10	58%	42%		38

E11: To what extent have Americans gained a better understanding of HCNs? Includes "Too early to tell."

	Not at all	Minimally	Moderately	Considerably	Exceptionally	Too early to tell	Total
E11	0%	12%	34%	34%	10%	10%	41

E11: To what extent have Americans gained a better understanding of HCNs? Excludes "Too early to tell."

	Not at all	Minimally	Moderately	Considerably	Exceptionally	Total
E11		14%	38%	38%	11%	37

E12: Which of the following resources have been useful to you in your third goal activities?

	Yes
Coverdell World Wise Schools staff (Useful)	5
Contact with other Peace Corps staff in Washington, D.C. (Useful)	2
Information at staging (Useful)	16
Information from your post sent to you before departure (Useful)	16
Internet (Useful)	31
Invitation kits (Useful)	17
Material in staging packet (Useful)	18
Peace Corps staff at post (e.g., World Wise School contact) (Useful)	11
Recruiting (Useful)	10
Resources available from Coverdell World Wise Schools (Useful)	5
Resources available on Peace Corps website (e.g., third goal section) (Useful)	14
Training on third goal (Useful)	8

E12: Which of the following resources would/will be helpful to you in your third goal activities?

	Yes
Coverdell World Wise Schools staff (Would be helpful)	17
Contact with other Peace Corps staff in Washington, D.C. (Would be helpful)	14
Information at staging (Would be helpful)	10
Information from your post sent to you before departure (Would be helpful)	11
Internet (Would be helpful)	7
Invitation kits (Would be helpful)	7
Material in staging packet (Would be helpful)	5
Peace Corps staff at post (e.g., World Wise School contact) (Would be helpful)	10
Recruiting (Would be helpful)	8
Resources available from Coverdell World Wise Schools (Would be helpful)	13
Resources available on Peace Corps website (e.g., third goal section) (Would be helpful)	11
Training on third goal (Would be helpful)	15
Other: Please specify below (Would/will be helpful)	2

E12: Other useful/helpful resources? Other (specify)

	Column N %	Count	Row N %
E12_OTHER	Open-ended results. Not responsive to request.		
Total		43	100%

E13: Do you know about the Peace Corps Partnership Program (PCPP)?

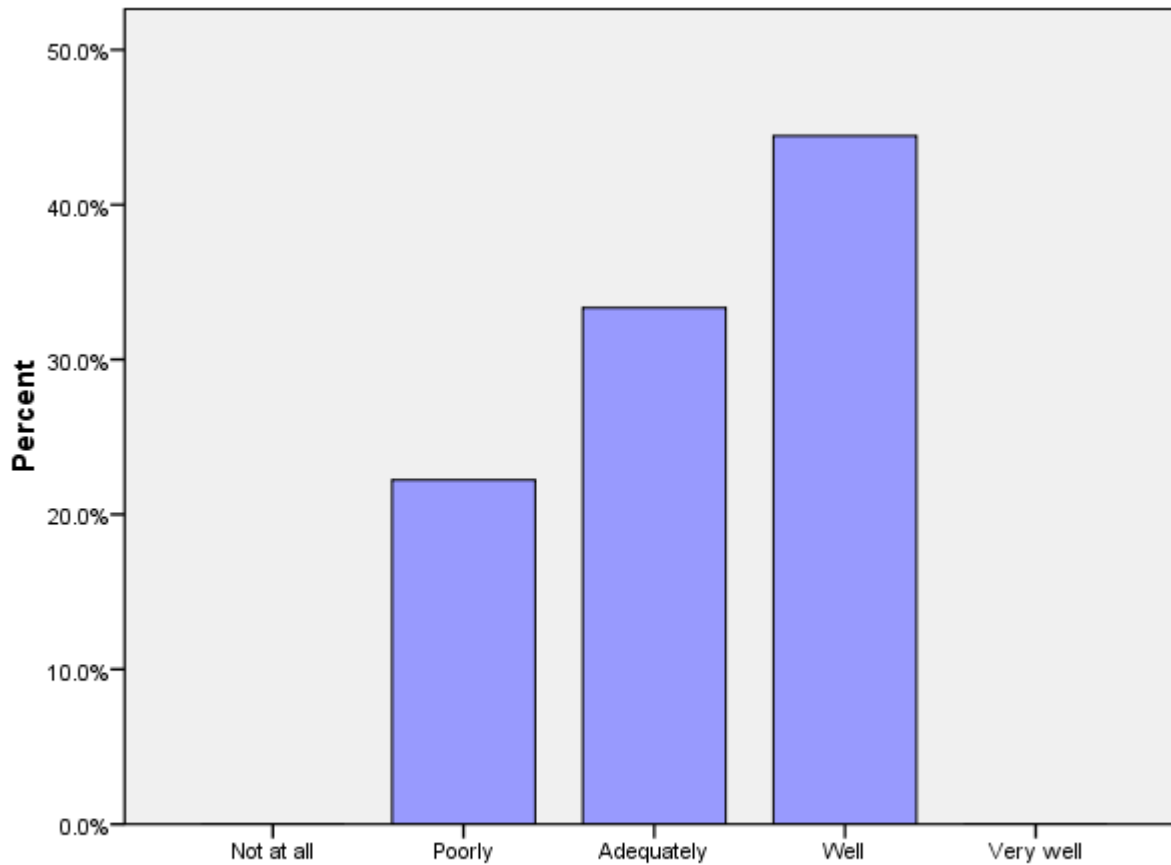
	No	Yes, but I haven't used it.	Yes, I have used it.	Total
E13	41%	51%	7%	41

F. Peace Corps Support

This section reports Volunteers' assessments of in-country Peace Corps.

F1 (PCVs at post 9+ months): How prepared for your arrival were the host people with whom you work?

	Not at all	Poorly	Adequately	Well	Very well	Total
F1		22%	33%	44%		9



F1: When you arrived at your community, how prepared for your arrival were the host people with whom you work?

F2: How satisfied are you with the health care you received from your PCMO(s)?

	Not at all	Minimally	Adequately	Considerably	Exceptionally	Not Used	Total
F2		7%		26%	67%		42

F3: How satisfied are you with the following support provided by in-country PC staff?

	Not at all 1	2	3	4	Completely 5	NA	Total
Administrative/logistical		17%	31%	31%	21%		42
Cross-cultural		24%	31%	29%	14%	2%	42
Emotional	10%	14%	21%	38%	14%	2%	42
Feedback on my work reports	17%	5%	14%	36%	17%	12%	42
Job assignment	17%	29%	21%	24%	10%		42
Language learning	12%	24%	31%	24%	10%		42
Medical		5%		24%	71%		42
Safety and security	7%	19%	31%	31%	12%		42
Site selection/preparation	26%	40%	26%	7%			42
Technical skills	21%	21%	38%	17%		2%	42

F4: How satisfied are you with the Peace Corps allocation of time and resources to mental health/adjustment issues?

	Not at all satisfied 1	2	3	4	Completely satisfied 5	Total
F4	5%	29%	36%	24%	7%	42

F5: What level of PC support have you received to help cope with stress from issues such as HIV/AIDS, food insecurity, etc. in your community? (Including PCVs w/no need for support)

	No support	Minimal support	Adequate support	Considerable support	Exceptional support	NA / I have no need for support	Total
F5	2%	21%	31%	7%	10%	29%	42

F5: What level of PC support have you received to help cope with stress from issues such as HIV/AIDS, food insecurity, etc. in your community? (Excluding PCVs w/no need for support)

	No support	Minimal support	Adequate support	Considerable support	Exceptional support	Total
F5	3%	30%	43%	10%	13%	30

F6: How would you rate your interaction with the Country Director in terms of the following?

	Not adequate	Adequate	Total
Responsiveness to my issues	8%	92%	40
Informative content	5%	95%	40
My comfort level discussing issues	8%	92%	40
Adequacy of visits	23%	77%	39

F6b: How would you rate your interaction with the PTO/SRPTC in terms of the following?

	Not adequate	Adequate	Total
Responsiveness to my issues	23%	77%	35
Informative content	31%	69%	35
My comfort level discussing issues	29%	71%	34
Adequacy of visits	23%	77%	30

F6c: How would you rate your interaction with the APCD/Program Manager in terms of the following?

	Not adequate	Adequate	Total
Responsiveness to my issues	22%	78%	41
Informative content	22%	78%	41
My comfort level discussing issues	22%	78%	41
Adequacy of visits	24%	76%	41

F6d: How would you rate your interaction with the PCMO in terms of the following?

	Not adequate	Adequate	Total
Responsiveness to my issues	2%	98%	41
Informative content	0%	100%	41
My comfort level discussing issues	2%	98%	40
Adequacy of visits	8%	92%	36

F6e: How would you rate your interaction with the Safety and Security Coordinator in terms of the following?

	Not adequate	Adequate	Total
Responsiveness to my issues	19%	81%	37
Informative content	28%	72%	36
My comfort level discussing issues	21%	79%	34
Adequacy of visits	36%	64%	33

F6f: How would you rate your interaction with the Training Manager in terms of the following?

	Not adequate	Adequate	Total
Responsiveness to my issues	26%	74%	35
Informative content	20%	80%	35
My comfort level discussing issues	20%	80%	35
Adequacy of visits	21%	79%	29

F6g: How would you rate your interaction with administrative staff in terms of the following?

	Not adequate	Adequate	Total
Responsiveness to my issues	11%	89%	35
Informative content	8%	92%	36
My comfort level discussing issues	11%	89%	35
Adequacy of visits	19%	81%	32

F6h: How would you rate your interaction with other post staff (please specify) in terms of the following?

	Not adequate	Adequate	Total
Responsiveness to my issues	20%	80%	5
Informative content	17%	83%	6
My comfort level discussing issues	25%	75%	4
Adequacy of visits	40%	60%	5

F7: To what extent is your CD aware of Volunteer issues and concerns through interactions with Volunteers?

	Not at all	Minimally	Adequately	Considerably	Completely	Total
F7			10%	46%	44%	41

F8: What is the most effective way you use to communicate with PC staff?

Most effective	Cellphone (voice)	52%	22
	Text messaging	29%	12
	In-person visits	14%	6
	Email/ Internet	5%	2
	Other. Please specify		
	Telephone not at residence or work		
	Telephone at residence or work		
	Letters		
	CB radio		
	Total	100%	42

F8: What is the second most effective way you use to communicate with PC staff?

Second most effective	Email/ Internet	35%	14
	Cellphone (voice)	28%	11
	Text messaging	25%	10
	In-person visits	10%	4
	Telephone at residence or work	2%	1
	Other. Please specify		
	Telephone not at residence or work		
	Letters		
	CB radio		
	Total	100%	40

F8: What is the third most effective way you use to communicate with PC staff?

(C11_THREE) Third most effective	Email/ Internet	38%	15
	In-person visits	30%	12
	Text messaging	20%	8
	Cellphone (voice)	12%	5
	Other. Please specify		
	Telephone not at residence or work		
	Telephone at residence or work		
	Letters		
	CB radio		
	Total	100%	40

F9: How do you rate the effectiveness of your communication resources for contacting in-country PC staff?

	Very poor	Poor	Adequate	Good	Excellent	Total
F9	2%		26%	38%	33%	42

G. Your Safety and Security

This section reports on how safe and informed about their safety Volunteers feel. Their experiences with reported and unreported crimes are summarized.

G1: How safe do you feel...?

	Not at All Safe	Often Safe	Adequately Safe	Usually Safe	Very Safe	Total
Where you live		7%	10%	40%	43%	42
Where you work		2%	7%	33%	57%	42
When you travel in-country	2%	14%	40%	33%	10%	42
City where main Peace Corps office is located		10%	40%	38%	12%	42

G2: Please indicate the number of times you experienced the following types of discrimination/harassment.

	Never	Once	2-5 times	6-10 times	11-25 times	26+ times	Total
Age	78.1%		3.1%	9.4%	3.1%	6.2%	32
Anti-American	66.7%	12.1%	12.1%	3.0%	3.0%	3.0%	33
Disability	100.0%						30
Gender	43.8%	3.1%	12.5%	18.8%	6.2%	15.6%	32
Racial/color	50.0%			6.7%	6.7%	36.7%	30
Religious	75.0%	3.1%	12.5%	3.1%		6.2%	32
Sexual (verbal)	46.9%	3.1%	6.2%	18.8%		25.0%	32
Sexual (physical)	83.9%	3.2%	9.7%			3.2%	31
Sexual orientation	90.3%		3.2%	3.2%	3.2%		31

G2: Please indicate the number of times you reported discrimination/harassment events to PC.

	Never	Once	2-5 times	6-10 times	11-25 times	26+ times	Total
Age	100.0%						6
Anti-American	87.5%		12.5%				8
Disability	100.0%						1
Gender	85.7%	14.3%					14
Racial/color	100.0%						12
Religious	100.0%						8
Sexual (verbal)	75.0%	16.7%				8.3%	12
Sexual (physical)	100.0%						3
Sexual orientation	50.0%	50.0%					4

G3: Please indicate the number of times you experienced the following types of crimes.

	Never	Once	2-5 times	6-10 times	11-25 times	26+ times	Total
Burglary	85.7%	8.6%	5.7%				35
Theft	54.1%	24.3%	21.6%				37
Robbery	94.1%	5.9%					34
Physical assault	97.0%	3.0%					33
Aggravated assault	100.0%						33
Sexual assault	94.1%	2.9%		2.9%			34
Rape	97.0%	3.0%					33

G3: Please indicate the number of times you reported the following crimes to Peace Corps.

	Never	Once	2-5 times	6-10 times	11-25 times	26+ times	Total
Burglary	33.3%	33.3%	33.3%				3
Theft	35.7%	50.0%	14.3%				14
Robbery		100.0%					1
Physical assault	100.0%						1
Sexual assault	100.0%						1

G4a: If you did not report your experience with burglary, please your reason(s) for not reporting.

		PCV Responses	% Reason Not Rptd	Total PCVs Responding
\$NoRpBurg	I felt it was too minor or common to report	3	75%	
	I did not think the PC could help	1	25%	
	I believed it could result in changing sites	1	25%	
	Concerns of a possible breach in confidentiality			
	Reporting might result in disciplinary action against me			
	It might hurt my relationship with the community			
	Other			
	Total			

*Percents may total to more than 100% since Volunteers were asked to "mark all that apply."

G4b: If you did not report your experience with theft, please your reason(s) for not reporting.

		PCV Responses	% Reason Not Rptd	Total PCVs Responding
\$NoRpTheft	I felt it was too minor or common to report	8	80%	
	I did not think the PC could help	6	60%	
	Other	1	10%	
	I believed it could result in changing sites			
	Concerns of a possible breach in confidentiality			
	Reporting might result in disciplinary action against me			
	It might hurt my relationship with the community			
	Total			

*Percents may total to more than 100% since Volunteers were asked to "mark all that apply."

G4c: If you did not report your experience with robbery, please your reason(s) for not reporting.

		PCV Responses	% Reason Not Rptd	Total PCVs Responding
\$NoRpRobb	I felt it was too minor or common to report	2	100%	
	I did not think the PC could help	1	50%	
	Other	1	50%	
	I believed it could result in changing sites			
	Concerns of a possible breach in confidentiality			
	Reporting might result in disciplinary action against me			
	It might hurt my relationship with the community			
	Total			

*Percents may total to more than 100% since Volunteers were asked to "mark all that apply."

G4d: If you did not report your experience with physical assault, please your reason(s) for not reporting.

		PCV Responses	% Reason Not Rptd	Total PCVs Responding
\$NoRpPhAs	I did not think the PC could help	1	100%	
	I believed it could result in changing sites			
	I felt it was too minor or common to report			
	Concerns of a possible breach in confidentiality			
	Reporting might result in disciplinary action against me			
	It might hurt my relationship with the community			
	Other			
	Total			1

*Percents may total to more than 100% since Volunteers were asked to "mark all that apply."

G4: If you did not report your experience with aggravated assault, please your reason(s) for not reporting.

	PCV Responses	% Reason Not Rptd	Total PCVs Responding
\$NoRpAgAs			
I did not think the PC could help			
I believed it could result in changing sites			
I felt it was too minor or common to report			
Concerns of a possible breach in confidentiality			
Reporting might result in disciplinary action against me			
It might hurt my relationship with the community			
Other			
Total			

*Percents may total to more than 100% since Volunteers were asked to "mark all that apply."

G4e: If you did not report your experience with sexual assault, please your reason(s) for not reporting.

		PCV Responses	% Reason Not Rptd	Total PCVs Responding
\$NoRpSxAs	I did not think the PC could help	1	100%	
	I believed it could result in changing sites			
	I felt it was too minor or common to report			
	Concerns of a possible breach in confidentiality			
	Reporting might result in disciplinary action against me			
	It might hurt my relationship with the community			
	Other			
	Total			1

*Percents may total to more than 100% since Volunteers were asked to "mark all that apply."

G4f: If you did not report your experience with rape, please your reason(s) for not reporting.

		PCV Responses	% Reason Not Rptd	Total PCVs Responding
\$NoRpRape	I believed it could result in changing sites	1	100%	
	Concerns of a possible breach in confidentiality	1	100%	
	Reporting might result in disciplinary action against me	1	100%	
	It might hurt my relationship with the community	1	100%	
	Other	1	100%	
	I did not think the PC could help			
	I felt it was too minor or common to report			
	Total			

*Percents may total to more than 100% since Volunteers were asked to "mark all that apply."

H. Volunteers Working in HIV/AIDS

This section reports Volunteers' involvement in HIV/AIDS and their perceived effectiveness of their HIV/AIDS related activities.

H1: Which of the following best describes your involvement in HIV/AIDS activities?

	HIV/AIDS work is my primary assignment.	HIV/AIDS work is part of my secondary activities.	Involved in HIV/AIDS efforts, not primary/secondary work	Not involved in any HIV/AIDS related activities	Total
H1	31%	31%	17%	21%	42

H2: How well has PC training prepared you to undertake your HIV/AIDS activities?

	Not at all	Poorly	Adequately	Well	Very well	NA	Total
H2		15%	45%	24%	12%	3%	33

H3: In working with HC individuals or groups, how would you rate the effectiveness of your specific HIV/AIDS activities? (Including the "Don't Know" responses)

	Seldom effective	Sometimes effective	Often effective	Almost always effective	Don't know	Total
H3		39%	39%	3%	18%	33

H3: In working with HC individuals or groups, how would you rate the effectiveness of your specific HIV/AIDS activities? (Excluding the "Don't Know" responses)

	Seldom effective	Sometimes effective	Often effective	Almost always effective	Total
H3		48%	48%	4%	27

I. Your Life in the Peace Corps

This section reports on Volunteers' descriptions of and adjustments to their living conditions, including stress factors and how Volunteers cope with stress.

I1: Have you lived with a host country individual or family?

	Never lived with a host country individual or family	Yes, I lived with a host country individual or family only	Yes, in my community (not during PST).	Yes, both during PST and later in my community.	Total
I1	2%	81%		17%	42

I2: How often do you interact with HCNs in community/family social events?

	Daily	Several times a week	Weekly	Several times a month	Monthly	Less than once a month	Total
I2	33%	17%	14%	12%	12%	12%	42

I3: How well can you communicate in the language used by most people in your community?

	Not at all	Poorly	Adequately	Well	Very well	Total
I3	5%	36%	52%	5%	2%	42

I4: Do you have the following at your worksite?

	Never	Sometimes or more often	Total
Electricity	10%	90%	42
Running water	50%	50%	42

I4: Do you have the following at your residence?

	Never	Sometimes or more often	Total
Electricity	15%	85%	34
Running water	47%	53%	36

I5: How well do your PC experiences match the expectations you had before you became a Volunteer?

	Not at all	Minimally	Moderately	Considerably	Exceptionally	Total
I5	5%	12%	45%	33%	5%	42

I7: To what extent do the following create stress and/or emotional health issues for you?

	Not at all stressful 1	2	3	4	Exceptionally stressful 5	NA	Total
Cultural issues	10%	21%	36%	31%	2%		42
Dealing with violence in country (e.g., civil unrest, domestic violence, corporal punishment)	24%	21%	38%	14%		2%	42
Health/medical problems	10%	50%	19%	17%	5%		42
Issues including family, friends, loved ones in U.S.	12%	27%	32%	10%	17%	2%	41
Isolation/loneliness	15%	32%	39%	5%	10%		41
Local language	24%	21%	36%	17%	2%		42
Primary assignment	14%	14%	21%	33%	17%		42
Romantic relationships in-country	38%	21%	5%	12%		24%	42
Interactions with other Volunteers	38%	38%	12%	7%	2%	2%	42
Interactions with PC Staff	43%	33%	14%	5%	2%	2%	42
Safety and security	27%	44%	22%	5%	2%		41
Other: Please specify below			9%		55%	36%	11

18: Please mark all of the typical ways in which you cope with stress.

		PCV Responses	% Using This Stress Reducer	Total PCVs Responding
\$18LessStress	Pursue personal hobbies	33	79%	
	Leave the community for a time	33	79%	
	Talk with PCVs outside my community	31	74%	
	Talk with friends and family in US	31	74%	
	Talk with PCVs in my community	30	71%	
	Do sports	22	52%	
	Talk with co-workers or friends (not PCVs)	21	50%	
	Get involved in other projects	19	45%	
	Talk with PC in-country staff	18	43%	
	Meditate	16	38%	
	Pray	16	38%	
	Do other activity (specify)	5	12%	
	Talk with Office of Special Services staff	1	2%	
	Talk with my host family	1	2%	
	Total			

*Percents total to more than 100% since Volunteers were asked to "mark all that apply."

18: Others I talk with to reduce stress

	Percent	Number
18.OTHRS.TEXT	Open-ended results. Not responsive to request.	
Total	100%	43

18: Other activities to reduce stress

	Percent	Number
18.OTHRACT.TEXT2	Open-ended results. Not responsive to request.	
Total	100%	43

18: When asked about ways of coping with stress, Volunteers who answered "No stress"

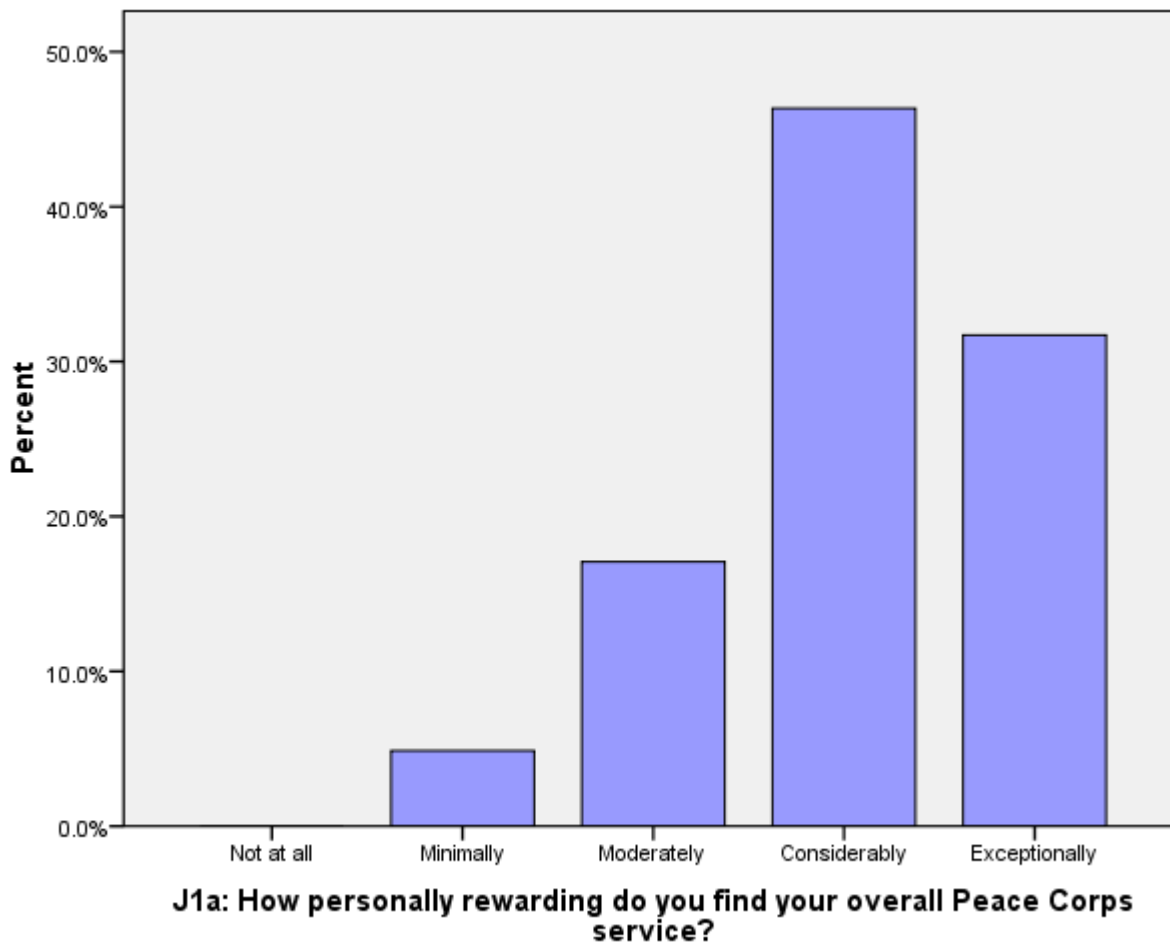
	No	Yes, I have no stress	Total
18.NOSTRESS	100%		43

J. Overall Assessment of Peace Corps Service

This section reports Volunteers' level of satisfaction with their Peace Corps service and their expectations about completing their service.

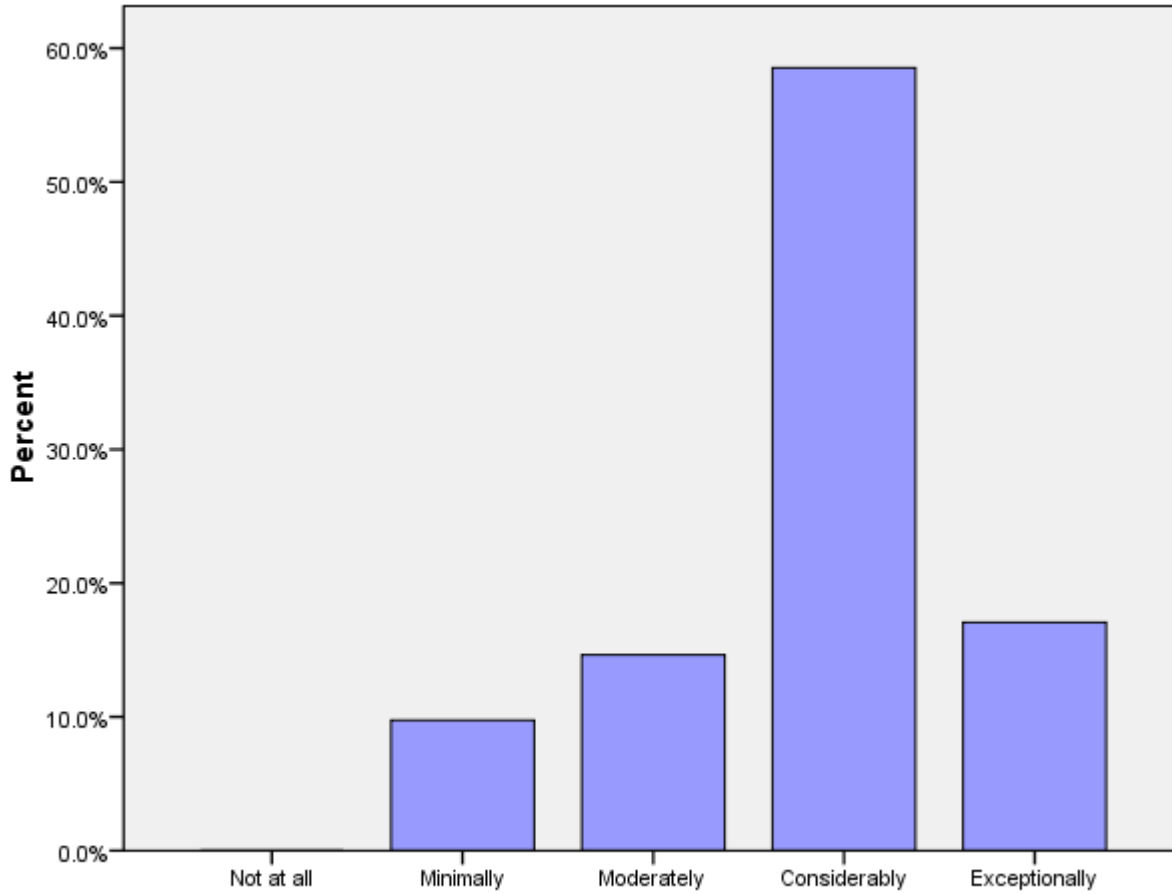
J1a: How personally rewarding do you find your overall Peace Corps service?

	Not at all	Minimally	Moderately	Considerably	Exceptionally	Total
J1A		5%	17%	46%	32%	41



J1b: How personally rewarding do you find your community involvement?

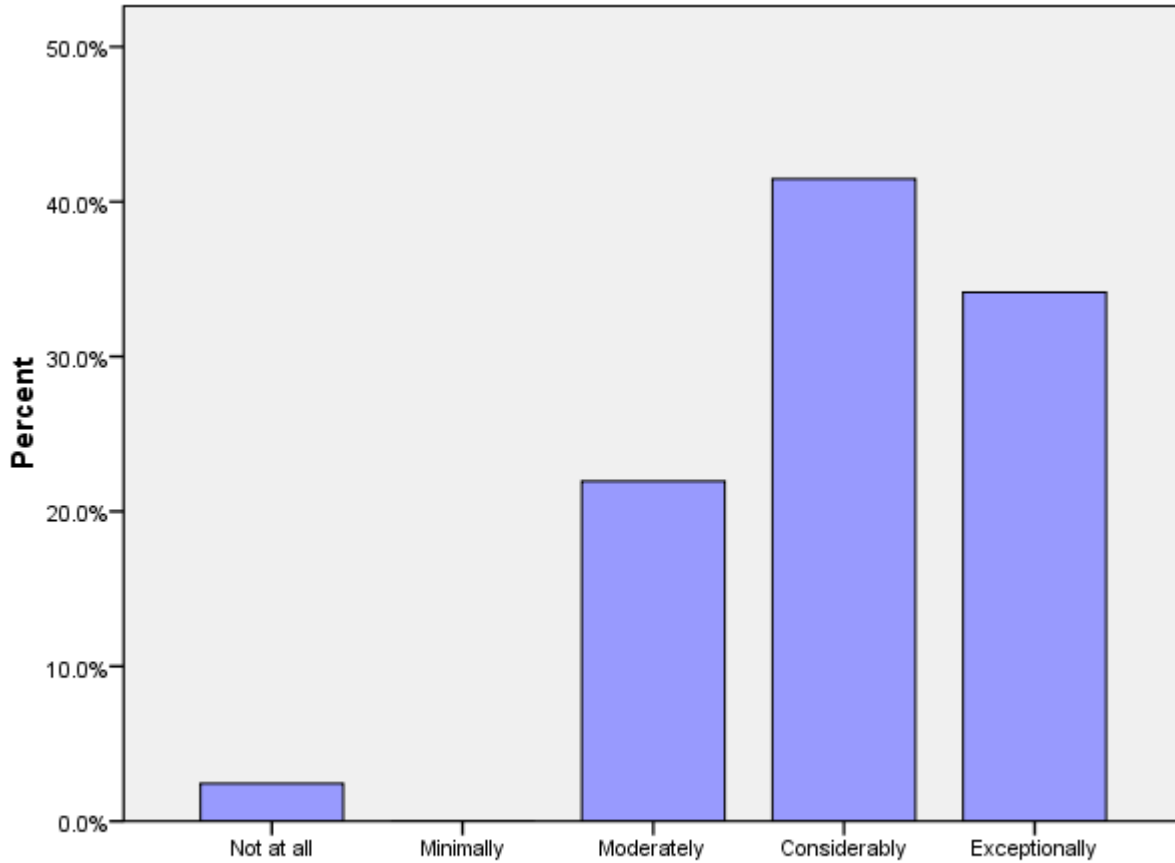
	Not at all	Minimally	Moderately	Considerably	Exceptionally	Total
J1B		10%	15%	59%	17%	41



J1b: How personally rewarding do you find your community involvement?

J1c: How personally rewarding do you find your experience with other Volunteers?

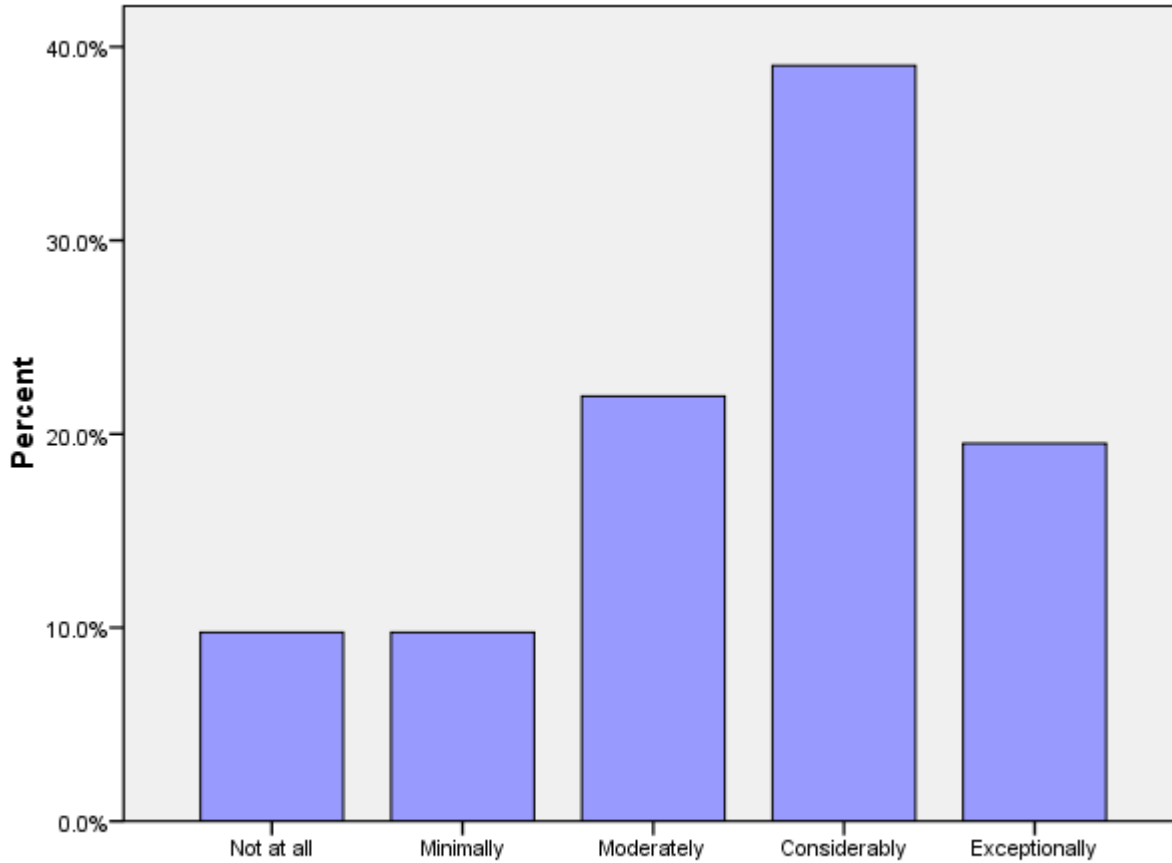
	Not at all	Minimally	Moderately	Considerably	Exceptionally	Total
J1C	2%		22%	41%	34%	41



J1c: How personally rewarding do you find your experience with other Volunteers?

J1d: How personally rewarding do you find your work with counterparts/community partners?

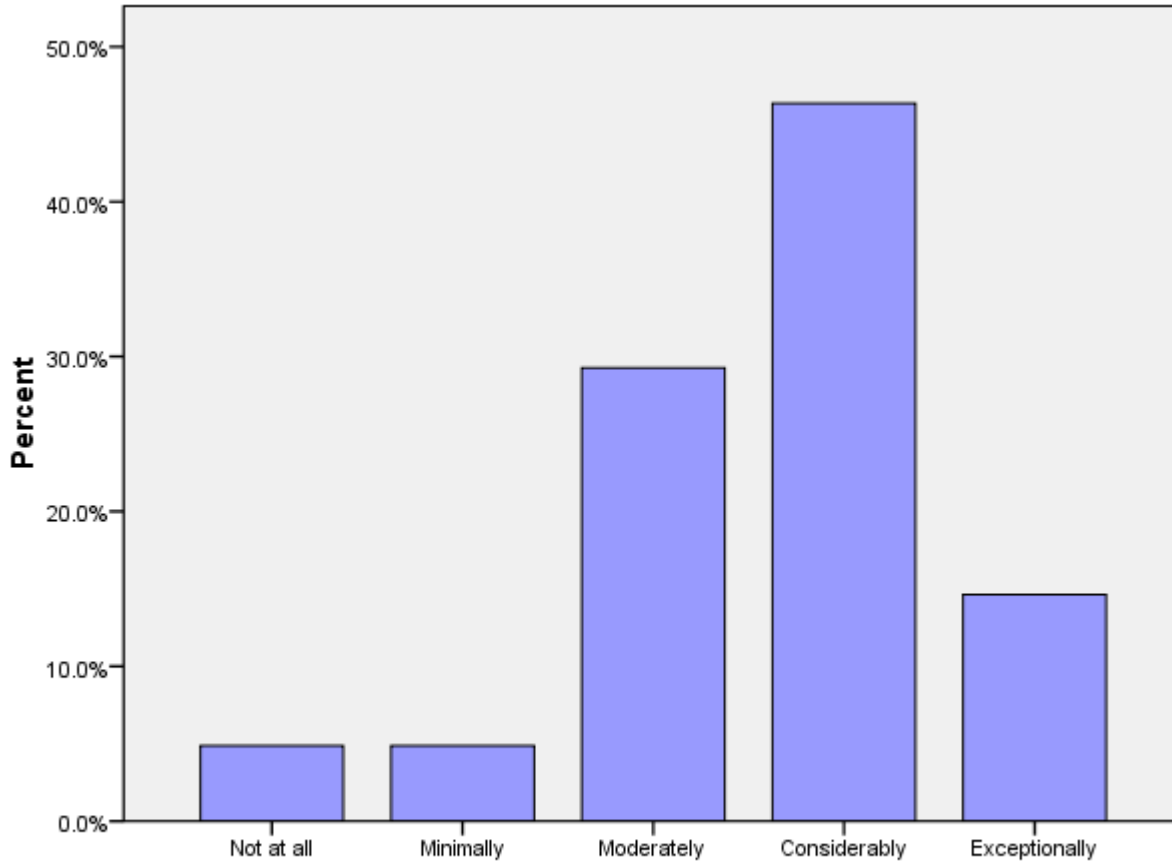
	Not at all	Minimally	Moderately	Considerably	Exceptionally	Total
J1D	10%	10%	22%	39%	20%	41



J1d: How personally rewarding do you find your work with counterparts/community partners?

J1e: How personally rewarding do you find your experience with other HCNs?

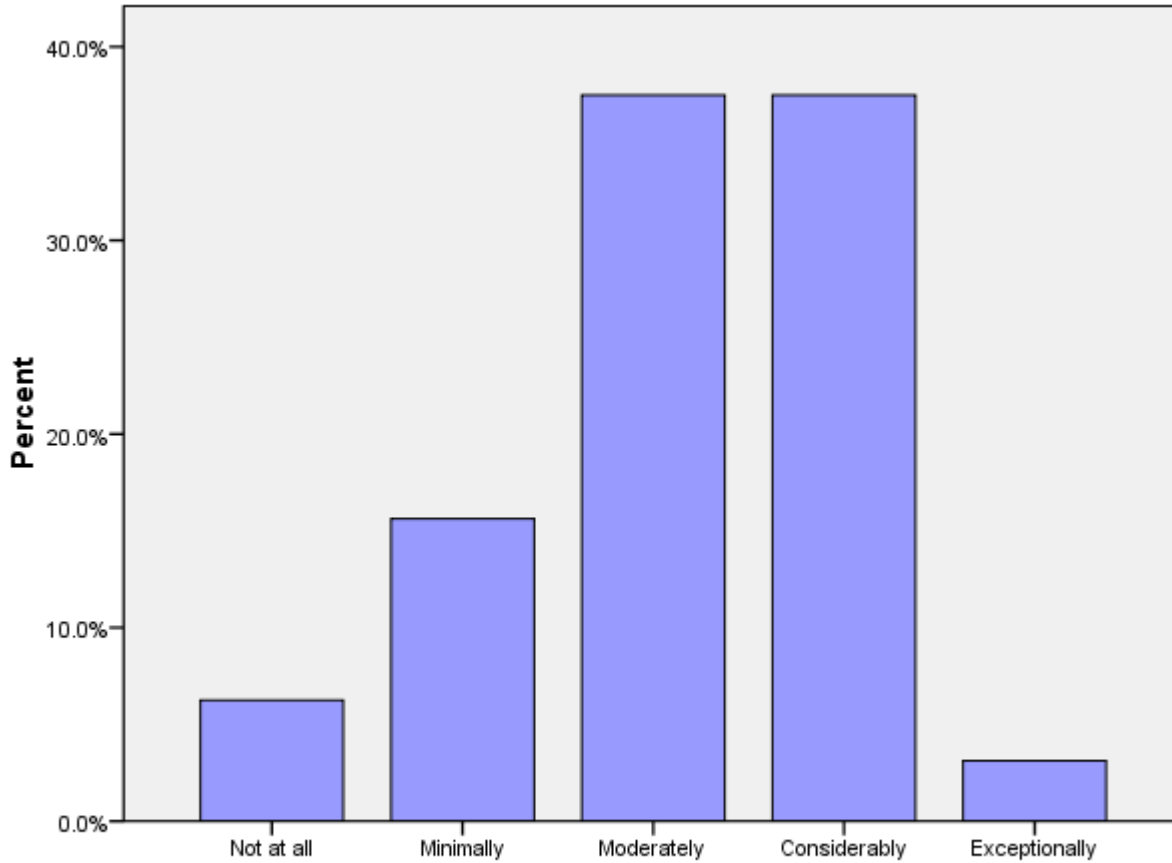
	Not at all	Minimally	Moderately	Considerably	Exceptionally	Total
J1E	5%	5%	29%	46%	15%	41



J1e: How personally rewarding do you find your experience with other HCNs?

J2a (PCVs at post 9 months+ months): Please rate how well you think you achieved Goal 1.

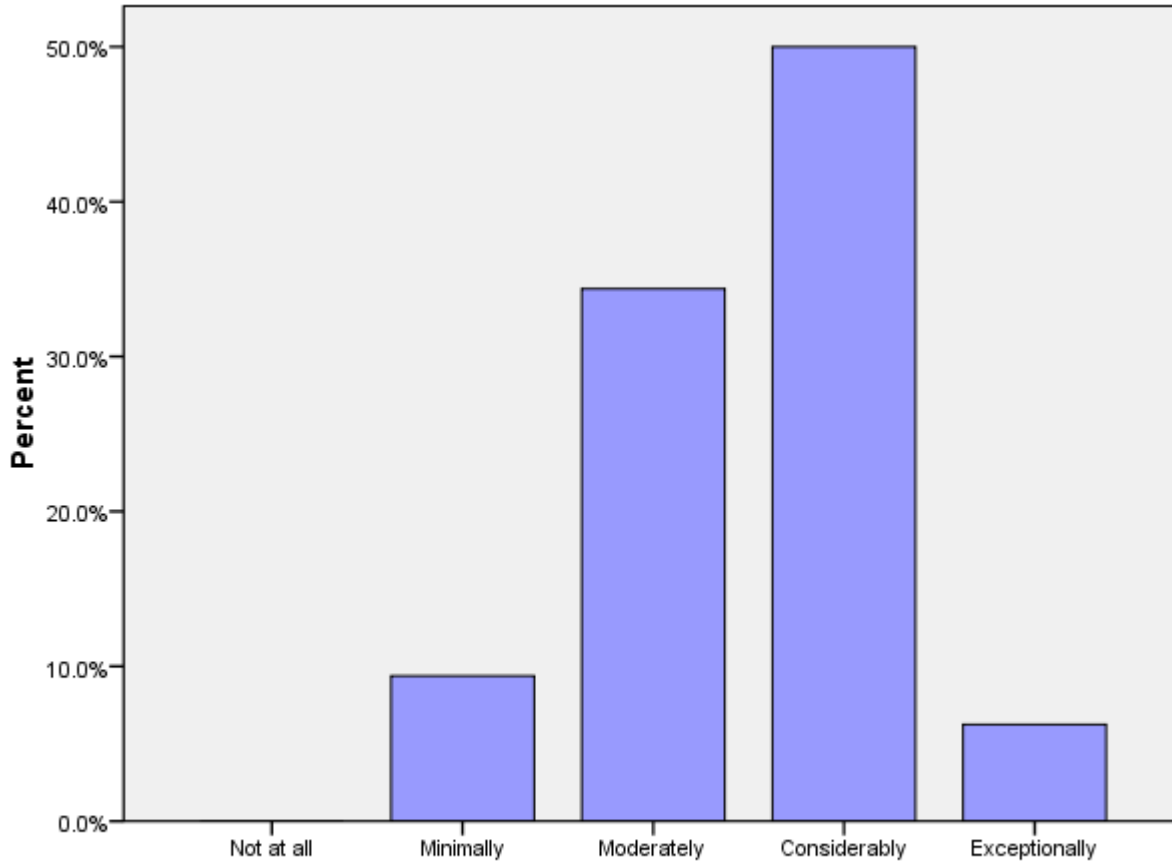
	Not at all	Minimally	Moderately	Considerably	Exceptionally	Total
J2A	6%	16%	38%	38%	3%	32



J2a (PCVs at post 9 months+ months): Rate how well you think you achieved Goal 1.

J2b: (PCVs at post 9 months+ months): Please rate how well you think you achieved Goal 2.

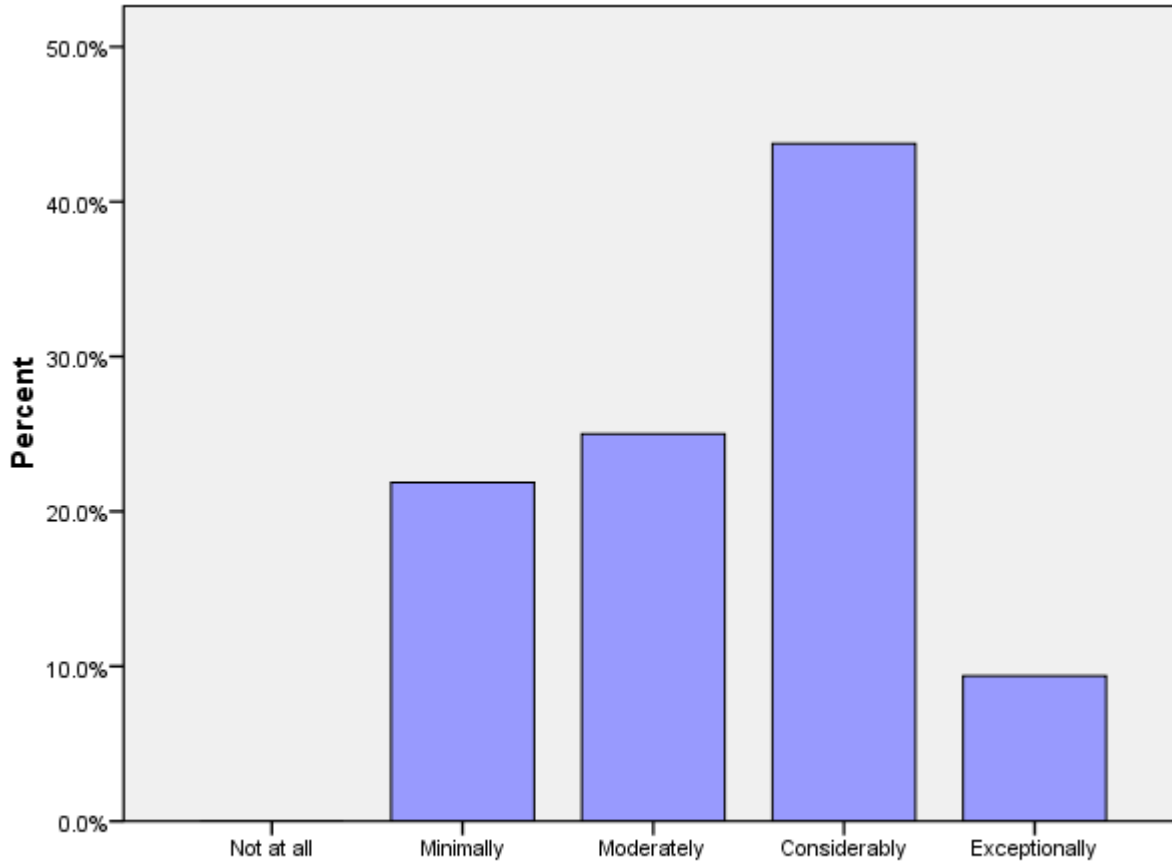
	Not at all	Minimally	Moderately	Considerably	Exceptionally	Total
J2B		9%	34%	50%	6%	32



J2b (PCVs at post 9 months+ months): Rate how well you think you achieved Goal 2.

J2c (PCVs at post 9 months+ months): Please rate how well you think you achieved Goal 3.

	Not at all	Minimally	Moderately	Considerably	Exceptionally	Total
J2C		22%	25%	44%	9%	32



J2c (PCVs at post 9 months+ months): Please rate how well you think you achieved Goal 3.

J3: Today, would you make the same decision to join the Peace Corps?

	No	Not likely	Possibly	Probably	Definitely	Total
J3		2%	5%	22%	71%	41

J4: Would you recommend Peace Corps service to others you think are qualified?

	No	Not likely	Possibly	Probably	Definitely	Total
J4			10%	17%	73%	41

J5: Do you intend to complete your Peace Corps service?

	No	Not sure	Yes	Might extend	Total
J5		5%	80%	15%	41

J6: Would your host country benefit most if the Peace Corps program was---

	Discontinued	Reduced	Refocused/redesi gned	Maintained as is	Expanded	Total
J6		7%	59%	22%	12%	41

K. Activities After Peace Corps Service

This section reports on Volunteers' plans for after they have completed their Peace Corps Service.

K1a: What are your plans after your Peace Corps service? Work in government.

Government			
In the U.S.	In your host country	In another country	N
100%	0%	0%	1

* Percent of cases was used. Percentages will be greater than 100 since Volunteers were asked to select all that applied.

K1b: What are your plans after your Peace Corps service? Work in the private sector.

Private Sector			
In the U.S.	In your host country	In another country	N
100%	0%	0%	2

* Percent of cases was used. Percentages will be greater than 100 since Volunteers were asked to select all that applied.

K1c: What are your plans after your Peace Corps service? Work for an NGO.

NGO			
In the U.S.	In your host country	In another country	N
0%	0%	0%	0

* Percent of cases was used. Percentages will be greater than 100 since Volunteers were asked to select all that applied.

K1d: What are your plans after your Peace Corps service? Work for PC Response.

Peace Corps Response			
In the U.S.	In your host country	In another country	N
0%	0%	0%	0

* Percent of cases was used. Percentages will be greater than 100 since Volunteers were asked to select all that applied.

K1e: What are your plans after your Peace Corps service? Continue to participate in volunteer activities.

Volunteer Activities			
In the U.S.	In your host country	In another country	N
100%	0%	0%	4

* Percent of cases was used. Percentages will be greater than 100 since Volunteers were asked to select all that applied.

K1f: What are your plans after your Peace Corps service? Graduate school/academic credentialing.

Graduate School			
In the U.S.	In your host country	In another country	N
100%	0%	0%	4

* Percent of cases was used. Percentages will be greater than 100 since Volunteers were asked to select all that applied.

K1g: What are your plans after your Peace Corps service? Travel.

Travel			
In the U.S.	In your host country	In another country	N
80%	0%	40%	5

* Percent of cases was used. Percentages will be greater than 100 since Volunteers were asked to select all that applied.

K1h: What are your plans after your Peace Corps service? Other.

Other			
In the U.S.	In your host country	In another country	N
100%	0%	0%	1

* Percent of cases was used. Percentages will be greater than 100 since Volunteers were asked to select all that applied.

K2: How prepared do you feel to share your Peace Corps experience and knowledge of your host country with others in the United States when you return?

	Not at all	Minimally	Moderately	Considerably	Total
How prepared do you feel to share your Peace Corps experience and knowledge of your host country with others in the United States when you return?	0%	0%	67%	33%	6

K3: How well do you feel Peace Corps has prepared you for life in the U. S. after you return?

	Not at all	Minimally	Moderately	Considerably	Exceptionally	Total
How well do you feel Peace Corps has prepared you for life in the U. S. after your return?	0%	17%	67%	0%	17%	6

K6: Have your life/career goals changed because of your Peace Corps service?

	No	Yes	Total
Have your life/career goals changed because of your Peace Corps service?	67%	33%	6

K7: How well informed are you about the following opportunities for returned Volunteers:

	Not informed	Somewhat informed	Well informed	N
Peace Corps Response	0%	33%	67%	6
Peace Corps' Fellows/USA program	0%	33%	67%	6
Noncompetitive eligibility	0%	50%	50%	6
RPCV Career Center in Washington, D.C.	33%	17%	50%	6
Returned Volunteer Services	33%	17%	50%	6

K8: How did you first learn about the Fellows/USA program?

Learn about Fellows/USA program	At COS Conference	40%
	PC Website	40%
	From a recruiter	20%
	Word of mouth	20%
	Hotline	0%
	At PST	0%
	At IST	0%
	Mid-service mailing from PC	0%
	University website	0%
	At post's information resource center	0%
	From staff in the host country's PC office	0%
	Other	0%
	N	

5

* Percent of cases was used. Percentages will be greater than 100 since Volunteers were asked to select all that applied.

K9: Which of the following resources do you think will be helpful as you exit Peace Corps service?

K9 Resources	RPCV Handbook	83%
	Career Resource Manual	50%
	Applying to federal government with RPCV noncompetitive eligibility	50%
	Electronic newsletter with job postings and career advice	50%
	List of RPCVs willing to talk to me about their careers	33%
	RPCV career conferences	33%
	RPCV job search webinars	33%
	Access to free job bulletins	33%
	Self-assessment software (SIGI 3)	33%
	Guide to speaking about my PC service to others (third goal)	17%
	Connection with RPCVs through a mentoring program	17%
	NOT SURE	17%
	Other	0%
N		

6

* Percent of cases was used. Percentages will be greater than 100 since Volunteers were asked to select all that applied.

K10: Which of the following third goal (helping promote a better understanding of peoples on the part of Americans) activities do you plan to do when you return to the U. S.?

K10 Third Goal	Continue with volunteerism and service learning	100%	
	Speak to school age children about my experience	83%	
	Speak to a group of adults about my experience	83%	
	Join a RPCV group	67%	
	Write stories from my PC service on my own	50%	
	Participate in PC Week	17%	
	Write stories from my PC service in conjunction with CWWS	17%	
	Obtain and use PC third goal resources	17%	
	Other	0%	
	NOT SURE	0%	
	N		6

* Percent of cases was used. Percentages will be greater than 100 since Volunteers were asked to select all that applied.