



**Peace Corps Volunteer
2009 Annual Volunteer Survey**

**Ukraine
October 13, 2009**

Office of Strategic Information, Research and Planning

Table of Contents

Introduction to the 2009 Annual Volunteer Survey Report	3
Overview of the Post's 2009 Volunteer Survey Respondents.....	4
A. Applying to the Peace Corps.....	7
B. Preparation for the Peace Corps.....	10
C. Your Peace Corps Assignment	11
D. Training for Peace Corps Assignment	18
E. Volunteer Assignment Goals and Impact.....	22
F. Peace Corps Support.....	33
G. Your Safety and Security	40
H. Volunteers Working in HIV/AIDS	49
I. Your Life in the Peace Corps	50
J. Overall Assessment of Peace Corps Service	57
K. Activities After Peace Corps Service.....	66

Introduction to the 2009 Annual Volunteer Survey Report

This country report contains the tables and charts from the Volunteers in your country who completed the 2009 Annual Volunteer Survey (AVS). The results provide a picture of the activities, experiences and views of Peace Corps Volunteers in 2009. The results show areas where Volunteers' needs are met and identify areas where improvements may be needed. The survey was fielded from May through August 2009.

A core set of questions was asked of all Volunteers. For the first time, Volunteers were also asked a series of questions relevant to their time in country:

- Volunteers in country 8 or less months were asked about applying to and preparing for the Peace Corps.
- Volunteers in country 18 or less months were asked about the effectiveness of their pre-service training (PST).
- Volunteers in country 19 or more months were asked about their post-service plans, as well as the Peace Corps' resources for their post-service transition.

Tables and graphs are labeled by survey section and the survey question. The tables show the percent of post respondents that selected each choice and the total number of post respondents that answered the question. The number of responses for each question will vary, depending on:

- whether the question was asked of all Volunteers or only the Volunteers in-country a certain number of months and
- how many of the Volunteers who were "eligible" to answer the question did respond.

Most survey questions asked respondents to select only one from a set of choices. The percentages for the "select one" responses add up to 100 percent. Other questions asked Volunteers to "mark all that apply" in situations, for example, where it is likely that respondents are involved in more than one secondary activity. The percentages of the "mark all that apply" responses will total more than 100 percent; each percentage equals the number of respondents selecting that choice divided by the number of respondents who answered the question.

Posts are encouraged to compare these 2009 results with the 2006 and 2008 survey results to note trends and changes over time. Because questions are revised from one survey to the next, a crosswalk between the 2008 and 2009 questions is posted on the OSIRP intranet page under 2009 AVS Reports "Reference Documents." The earlier 2008 survey global, regional and post reports are also posted on the OSIRP Intranet page.

Volunteers' extensive narrative responses to the 29 open-ended questions on the survey are in the post's 2009 Annual Volunteer Survey Open Ended Responses report. All Volunteers' narrative responses to key questions will be analyzed for global themes and presented in a later report.

The number of surveys for each post includes surveys submitted online by Volunteers and completed paper surveys sent to the Peace Corps headquarters for hand-entry into the online survey system. The final count may include mostly completed partial surveys added to the final dataset after the survey closed.

Overview of the Post's 2009 Volunteer Survey Respondents

This overview presents basic information about the characteristics of Volunteers who completed the 2009 Annual Volunteer Survey at post.

Completed Surveys by Months in Country

	8 months or less		9 to 18 months		19 months or more		Total	
	Number	Percent	Number	Percent	Number	Percent	Number	Percent
Months3grp	56	24%	89	38%	90	38%	235	100%

L1: What is your age?

	20-29	30-49	50+	Total
AGE3grp	74%	10%	16%	227

L2: What is your gender?

	Female	Male	Total
GENDER	60%	40%	225

Completed surveys by project.

	Count	Column N %
Community Development	47	20%
TEFL	126	54%
Youth Development	59	25%
Other. Please specify	2	1%
Total	234	100%

C2: Which best describes the focus of your primary assignment/work?

		Percent	Number
C2	English teaching	57%	134
	Youth development	22%	51
	Community development	8%	19
	NGO development	7%	16
	Business education/advising	2%	5
	Teacher training	1%	3
	HIV/AIDS	1%	2
	Urban & regional planning/municipal development	0%	1
	Other: Please specify	0%	1
	Health extension	0%	1
	Other education	0%	1
	Information & communications technology (ICT)	0%	1
	Water sanitation		
	Forestry/parks		
	Environmental education		
	Math/science teaching		
	Agroforestry		
	Agriculture/fish/livestock		
	Total	100%	235

C2.TEXT: Which of the following initiatives does your primary work include? Other (specify)

	PERCENT	NUMBER
C2.TEXT	Open-ended results. Not responsive to request.	
Total	100%	235

A. Applying to the Peace Corps

This section reports Volunteers' motivations in applying and accepting a Peace Corps assignment.

A1: How important were the following factors in accepting a PC assignment?

	Not Important	Somewhat important	Important	NA	Total
Different culture	9%	11%	80%		56
Work experience	16%	41%	43%		56
Help others		9%	91%		55
International experience	4%	16%	80%		56
Language	27%	25%	48%		56
Personal growth	2%	23%	75%		56
U. S. job market	64%	20%	11%	5%	55
Serve my country	27%	38%	32%	4%	56
Travel/adventure	2%	32%	66%		56
Other: Please specify below		6%	3%	90%	31

A1_OTHER: How important were the following factors in accepting a PC assignment? Other (specify)

	PERCENT	NUMBER
A1_OTHER	Open-ended results. Not responsive to request.	
Total	100%	235

A2. What prompted you to apply to the PC? Mark all that apply.

	PCV Responses	% Involved in Initiative	Total PCVs Responding
What prompted you to apply to PC	Personal interest in the Peace Corps	41	73%
	Peace Corps website	26	46%
	Returned Peace Corps Volunteer (e.g., someone you met or know personally)	21	38%
	Peace Corps campus or community information session	16	29%
	Other: Please specify	12	21%
	Peace Corps recruiter	11	20%
	Article or book about the Peace Corps	10	18%
	Returned Peace Corps Volunteer who spoke to your school or group about the Peace Corps	7	12%
	Radio, TV, or print advertisement	3	5%
	Peace Corps material in the mail	3	5%
	Total		

Percents may total to more than 100% since Volunteers were asked to "Mark all that apply."

A2.OTHER.TEXT: What prompted you to apply to the PC? Other (specify)

	PERCENT	NUMBER
A2.OTHER.TEXT	Open-ended results. Not responsive to request.	
Total	100%	235

B. Preparation for the Peace Corps

This section reports on Volunteers' assessment of the materials and information available before their service.

B1: How useful was the information on the PC website in preparing you for the realities of living and working as a Volunteer?

	Not at all 1	2	3	4	Extremely 5	Don't know (did not access information)	Total
B1	2%	18%	45%	29%	7%		56

B2: How useful were the PC materials about your country in helping you prepare for your service?

	Not at all 1	2	3	4	Extremely 5	Don't know (did not access information)	Total
B2		9%	36%	41%	14%		56

B3: How useful were the materials you received from the PC about your primary assignment in helping you prepare for your service?

	Not at all 1	2	3	4	Extremely 5	Don't know (did not access information)	Total
B3	4%	11%	41%	36%	9%		56

B4: How useful were the materials you received from the PC regarding the need for flexibility in adapting to your work?

	Not at all 1	2	3	4	Extremely 5	Don't know (did not access information)	Total
B4		7%	30%	45%	16%	2%	56

B7: How prepared do you feel to meet the challenges of PC service?

	Not at all 1	2	3	4	Exceptionally 5	Total
B7		2%	29%	59%	11%	56

C. Your Peace Corps Assignment

This section reports Volunteers' primary assignment work and secondary activities. The term "primary assignment" refers to the Volunteers' assignment which is part of an overall project plan designed by your host country partners and in-country Peace Corps staff.

C3: Which of the following activities does your primary assignment/work include? Mark all that apply.

	PCV Responses	% Involved in Initiative	Total PCVs Responding
\$C3PrmAct English teaching	185	80%	
Working with youth	143	62%	
HIV/AIDS	74	32%	
Sports/fitness	45	19%	
Working with NGO(s)	44	19%	
World Wise Schools/ Correspondence Match	43	19%	
Environment work	38	16%	
Girls' education	29	12%	
Arts	26	11%	
Nutrition education	24	10%	
Business advertising	23	10%	
Literacy	23	10%	
Information and communications technology (ICT)	22	9%	
Library development	21	9%	
Mobilize host country nationals (HCNs) to volunteer	21	9%	
Working with special groups (e.g., disabled, elderly, ethnic minorities, orphans)	20	9%	
Other: Please specify	20	9%	
Rural development	14	6%	
Income generation	12	5%	
WID/GAD	12	5%	

Microenterprise development	11	5%
Urban development/municipal development	8	3%
Biodiversity conservation	1	0%
Natural resources management	1	0%
Child survival		
Community food security (production/marketing)		
Household food security		
Water and sanitation		
Total		232

Percents may total to more than 100% since Volunteers were asked to "Mark all that apply."

C3: Which of the following activities does your primary assignment/work include? Other (specify)

	Column N %	Count	Row N %
C3.OTHER.TEXT	Open-ended results. Not responsive to request.		
Total		235	100%

C4: Hours Spent on Primary Assignment During Average Work Week

	None	1-10 hrs	11-20 hrs	21-30 hrs	31-40 hrs	More than 40 hrs	Total
C4Hrs6grp	1%	12%	39%	30%	13%	5%	231

C4: How many hours do you spend on your primary assignment during an average work week?

	All Volunteers	Average	Lowest reported	Highest reported	Did not answer
C4	235	23.4	0	60	4

C5: Which of the following do your secondary activities (other than your primary assignment work) include? Mark all that apply.

	PCV Responses	% Involved in Initiative	Total PCVs Responding
\$C5SecAct Working with youth	117	54%	
English teaching	115	53%	
HIV/AIDS	82	38%	
Sports/fitness	57	26%	
Environment work	45	21%	
Working with special groups (e.g., disabled, elderly, ethnic minorities, orphans)	42	19%	
Library development	41	19%	
Arts	39	18%	
Working with NGO(s)	38	17%	
Mobilize host country nationals (HCNs) to volunteer	37	17%	
World Wise Schools/ Correspondence Match	36	17%	
Girls' education	32	15%	
Other: Please specify	27	12%	
Information and communications technology (ICT)	24	11%	
WID/GAD	23	11%	
Literacy	18	8%	

Nutrition education	13	6%	
Business advertising	8	4%	
Microenterprise development	6	3%	
Rural development	4	2%	
Urban development/municipal development	3	1%	
Biodiversity conservation	2	1%	
Income generation	2	1%	
Natural resources management	2	1%	
Child survival	1	0%	
Community food security (production/marketing)	1	0%	
Household food security			
Water and sanitation			
Total			218

Percents may total to more than 100% since Volunteers were asked to "Mark all that apply."

C5: Which of the following do your secondary activities include? Other (specify)

	Column N %	Count	Row N %
C5.OTHER.TEXT			
Open-ended results. Not responsive to request.			

Open-ended results. Not responsive to request.



Total

235

100%

C5: No Secondary Activities

		Percent	Number
C5.NONE	No	94%	221
	Yes, I have no secondary activities	6%	14
	Total	100%	235

C6: Hours Spent on Secondary Activities During Average Work Week

	None	1-10 hrs	11-20 hrs	21-30 hrs	31-40 hrs	More than 40 hrs	Total
C6Hrs6grp		75%	20%	4%	1%		217

C6. How many hours do you spend on secondary activities during an average work week?

	All Volunteers	Average	Lowest reported	Highest reported	Did not answer
C6	235	9.4	1	40	18

C7: How personally satisfying is your--?

	Not at all 1	2	3	4	Exceptionally 5	Total
Primary assignment	5%	17%	31%	37%	11%	235
Secondary project/activities	4%	7%	25%	42%	22%	226

D. Training for Peace Corps Assignment

This section reports Volunteers' assessments of the effectiveness of their Pre-Service Training and In-Service Training at post. In-Service Training (IST) includes: Reconnect; Technical IST; Mid-Service and Close of Service conferences; project management/leadership conferences; and other post-sponsored training sessions.

D1: (PCVs at post 18 months or less) How effective was your Pre-Service Training (PST) in preparing you to--

	Not effective	Poor	Adequate	Effective	Very Effective	NA/No training	Total
Manage cultural differences	1%	6%	33%	47%	13%		143
Deal with adjustment issues	3%	7%	41%	39%	10%		142
Work with counterparts/community partners	6%	27%	39%	21%	6%	1%	142
Use language needed in work and social interactions	3%	6%	20%	34%	37%		143
Perform technical aspects of your work	4%	11%	38%	31%	14%	3%	140
Work on your project goals and objectives	1%	16%	40%	31%	11%	1%	142
Conduct a participatory community needs assessment (e.g., PACA)	6%	22%	38%	18%	12%	5%	143
Monitor your project goals and outcomes	2%	18%	45%	24%	10%	1%	139
Maintain your physical health	1%	10%	26%	43%	18%	2%	143
Maintain your mental/emotional health	1%	15%	26%	41%	15%	2%	143
Maintain your personal safety and security		1%	23%	41%	34%	1%	142

D5: How effective was your In-Service Training (IST) in preparing you to--

	Not effective	Poor	Adequate	Effective	Very Effective	NA/No training	Total
Manage cultural differences	2%	5%	21%	33%	17%	23%	150
Deal with adjustment issues	1%	5%	23%	31%	10%	29%	149
Build and strengthen working relationships with counterparts/community partners	3%	9%	30%	29%	15%	14%	149
Use language needed in work and social interactions	2%	4%	23%	35%	29%	7%	151
Perform technical aspects of your work	2%	7%	26%	34%	16%	14%	148
Work on your project goals and objectives	1%	7%	20%	41%	17%	13%	149
Conduct a participatory community needs assessment (e.g.,PACA)	3%	7%	28%	28%	11%	22%	148
Monitor project goals and outcomes	2%	7%	25%	38%	13%	15%	149
Maintain your physical health	3%	2%	22%	27%	15%	31%	150
Maintain your mental/emotional health	4%	3%	24%	23%	16%	30%	150
Maintain your personal safety and security	2%	1%	19%	23%	22%	32%	149

D8: Did you have this skill before joining the Peace Corps?

	No/ No answer	Yes	Total
Skills specific to my assignment	81	144	225
Assessing community needs	145	76	221
Organizing/implementing community activities	98	124	222
Building capacity of local organizations	154	65	219
Monitoring, reporting, and evaluating my work	47	177	224
Designing and implementing training sessions	125	100	225

D8: Is the skill needed for your Peace Corps work?

	No/ No answer	Yes	Total
Skills specific to my assignment	7	180	187
Assessing community needs	21	201	222
Organizing/implementing community activities	27	196	223
Building capacity of local organizations	80	141	221
Monitoring, reporting, and evaluating my work	25	199	224
Designing and implementing training sessions	47	175	222

D8: Have you had adequate Peace Corps training to acquire the skill?

	No/ No answer	Yes	Total
Skills specific to my assignment	23	147	170
Assessing community needs	44	143	187
Organizing/implementing community activities	54	125	179
Building capacity of local organizations	92	74	166
Monitoring, reporting, and evaluating my work	27	131	158
Designing and implementing training sessions	56	115	171

E. Volunteer Assignment Goals and Impact

This section reports Volunteers' self-assessments of their impact on the individuals and organizations in the communities in which they serve. At the end of this section, Volunteers' third goal activities, participation in Coverdell World Wise School/Correspondence Match (CWWS/CM) and use of Peace Corps resources to support their work are reported in questions.

E1: To what extent does your Volunteer work assignment address the following?

	Not at all 1	2	3	4	Exceptionally 5	NA	Total
Meets the objectives of the project plan	3%	11%	27%	41%	15%	3%	227
Builds local capacity for sustainability	7%	23%	31%	27%	7%	5%	229
Involves local people in planning and implementing activities	6%	14%	27%	37%	14%	3%	228
Complements other local development activities	14%	17%	34%	21%	8%	6%	228
Transfers skills to host country individuals and organizations	4%	9%	36%	38%	11%	2%	229
Mobilizes host country nationals (HCNs) to volunteer	15%	24%	29%	20%	4%	7%	228
Helps promote a better understanding of Americans on the part of the peoples served (goal 2)	0%	4%	11%	41%	43%	0%	230
Helps promote a better understanding of other peoples on the part of Americans (goal 3)	3%	5%	13%	40%	38%	1%	230

E2: To what extent does your host community--?

	Not at all 1	2	3	4	Exceptionally 5	NA	Total
Need the assistance that you provided	5%	16%	26%	35%	17%	1%	88
Want the assistance that you provided	3%	16%	22%	35%	24%		88

E3: How much impact does your assignment have on the capacities of your host counterparts/community partners?

	None 1	2	3	4	Exceptional 5	NA	Total
Ability to access information (e.g., library, Internet, etc.)	11%	16%	28%	28%	12%	6%	231
Leadership skills	7%	18%	40%	28%	5%	2%	229
Planning and management	8%	16%	32%	34%	8%	2%	230
Problem solving/critical thinking	9%	20%	27%	33%	8%	3%	230
Self-esteem	10%	14%	30%	32%	8%	6%	228
Technical skills	9%	20%	32%	31%	5%	3%	229
Use of local resources	10%	19%	33%	30%	5%	4%	227
Use of external resources (e.g., grants, international NGOs)	8%	14%	25%	31%	19%	3%	228
Better understanding of Americans	0%	3%	13%	38%	46%	0%	231
Other: Please specify below	1%	1%	2%	10%	4%	82%	84

E3: How much impact does your assignment have on the capacities of your host counterparts/community partners? Other (specify)

	Column N %	Count	Row N %
E3_OTHER	Open-ended results. Not responsive to request.		
Total		235	100%

E4: How much impact does your assignment have on the capacities of your host individuals with whom you work?

	None 1	2	3	4	Exceptional 5	NA	Total
Ability to access information (e.g., library, Internet, etc.)	10%	17%	29%	28%	13%	3%	230
Leadership skills	4%	12%	32%	36%	14%	2%	231
Planning and management	10%	19%	32%	29%	6%	4%	231
Problem solving/critical thinking	3%	13%	28%	40%	14%	2%	231
Self-esteem	2%	8%	27%	42%	19%	3%	229
Technical skills	9%	17%	35%	26%	9%	5%	230
Use of local resources	10%	23%	35%	24%	5%	3%	230
Use of external resources (e.g., grants, international NGOs)	16%	24%	23%	22%	8%	6%	231
Better understanding of Americans	0%	3%	7%	34%	56%		232
Other: Please specify below	1%	1%	4%	12%	7%	75%	76

E4: How much impact does your assignment have on the capacities of your host individuals with whom you work? Other (specify)

	Column N %	Count	Row N %
E4_OTHER	Open-ended results. Not responsive to request.		
Total		235	100%

E5: To what extent does your assignment enhance the capacities of organizations with whom you work?

	None 1	2	3	4	Exceptional 5	NA	Total
Identifying and prioritizing organizational needs	15%	17%	34%	22%	4%	7%	228
Leadership	11%	23%	30%	27%	2%	7%	229
Management	14%	25%	30%	21%	3%	8%	229
Monitoring and evaluation	13%	19%	31%	26%	4%	7%	227
Planning and implementing organizational activities	11%	14%	28%	36%	6%	4%	227
Teamwork/participatory decision-making	14%	14%	27%	33%	6%	6%	227
Use of local resources	16%	20%	31%	22%	6%	5%	229
Ability to mobilize, manage, and sustain local volunteers	18%	21%	29%	20%	5%	6%	228
Other: Please specify below	3%	3%	3%	9%	2%	80%	66

E5: To what extent does your assignment enhance the capacities of organizations with whom you work? Other (specify)

	Column N %	Count	Row N %
E5_OTHER Open-ended results. Not responsive to request.			
Total		235	100%

E6: How effective have you been in transferring knowledge and skills to help the following persons or groups build their capacities?

	Not at all 1	2	3	4	Exceptionally 5	NA	Total
Your counterpart/community partner	8%	13%	28%	35%	13%	2%	230
Another institution/organization	11%	16%	30%	25%	9%	9%	228
Members of your host community	3%	14%	30%	33%	19%	1%	229
Other: Please specify below	3%	1%	3%	8%	12%	72%	72

E7: To what extent have HC individuals gained a better understanding of Americans? Includes "Too early to tell."

	Not at all	Minimally	Moderately	Considerably	Exceptionally	Too early to tell	Total
E7	0%	3%	16%	54%	24%	4%	228

E7: To what extent have HC individuals gained a better understanding of Americans? Excludes "Too early to tell."

	Not at all	Minimally	Moderately	Considerably	Exceptionally	Total
E7		3%	17%	56%	25%	219

E9. In which of the following third goal activities have you participated during your PC service?

		PCV Responses	% Doing This	Total PCVs Responding
\$E9Goal3Acts	Electronic updates	193	88%	
	Hosting American visitors	141	64%	
	Hard copy/paper update	107	49%	
	Personal website or blog	91	41%	
	Enrollment in the CWWS/CMS program	81	37%	
	Pen pal program/letter exchange	61	28%	
	While on home leave, spoke at a school or community group	32	15%	
	Podcasted/created a slide show or video posted online	19	9%	
	Other please specify	19	9%	
	Peace Corps Week activities	8	4%	
	Total			

Percents may total to more than 100% since Volunteers were asked to "Mark all that apply."

E9: When asked about third goal activities, Volunteer answered "No involvement in third goal activities."

	Have done third goal activities	No third goal activities	Total
Peace Corps' third goal is to "help promote a better understanding of other peoples on the part of Americans." In which of the following third goal activities, including your contact with family and friends, have you participated during your Peace Corps	96%	4%	235

E10: Would you recommend participation in the CWWS CMS to other Volunteers?

	I have not participated in CWWS/CM.	I have participated in CWWS/CM & would recommend it	I have participated in CWWS/CM and would NOT recommend it	Total
E10	64%	33%	3%	225

E11: To what extent have Americans gained a better understanding of HCNs? Includes "Too early to tell."

	Not at all	Minimally	Moderately	Considerably	Exceptionally	Too early to tell	Total
E11	0%	4%	20%	54%	20%	2%	228

E11: To what extent have Americans gained a better understanding of HCNs? Excludes "Too early to tell."

	Not at all	Minimally	Moderately	Considerably	Exceptionally	Total
E11	0%	4%	21%	54%	21%	224

E12: Which of the following resources have been useful to you in your third goal activities?

	Yes
Coverdell World Wise Schools staff (Useful)	48
Contact with other Peace Corps staff in Washington, D.C. (Useful)	37
Information at staging (Useful)	103
Information from your post sent to you before departure (Useful)	102
Internet (Useful)	192
Invitation kits (Useful)	124
Material in staging packet (Useful)	102
Peace Corps staff at post (e.g., World Wise School contact) (Useful)	76
Recruiting (Useful)	67
Resources available from Coverdell World Wise Schools (Useful)	39
Resources available on Peace Corps website (e.g., third goal section) (Useful)	95
Training on third goal (Useful)	57
Other: Please specify below (Useful)	7

E12: Which of the following resources would/will be helpful to you in your third goal activities?

	Yes
Coverdell World Wise Schools staff (Would be helpful)	61
Contact with other Peace Corps staff in Washington, D.C. (Would be helpful)	60
Information at staging (Would be helpful)	34
Information from your post sent to you before departure (Would be helpful)	53
Internet (Would be helpful)	27
Invitation kits (Would be helpful)	24
Material in staging packet (Would be helpful)	21
Peace Corps staff at post (e.g., World Wise School contact) (Would be helpful)	42
Recruiting (Would be helpful)	26
Resources available from Coverdell World Wise Schools (Would be helpful)	41
Resources available on Peace Corps website (e.g., third goal section) (Would be helpful)	43
Training on third goal (Would be helpful)	67
Other: Please specify below (Would/will be helpful)	3

E12: Other useful/helpful resources? Other (specify)

	Column N %	Count	Row N %
E12_OTHER	Open-ended results. Not responsive to request.		
Total		235	100%

E13: Do you know about the Peace Corps Partnership Program (PCPP)?

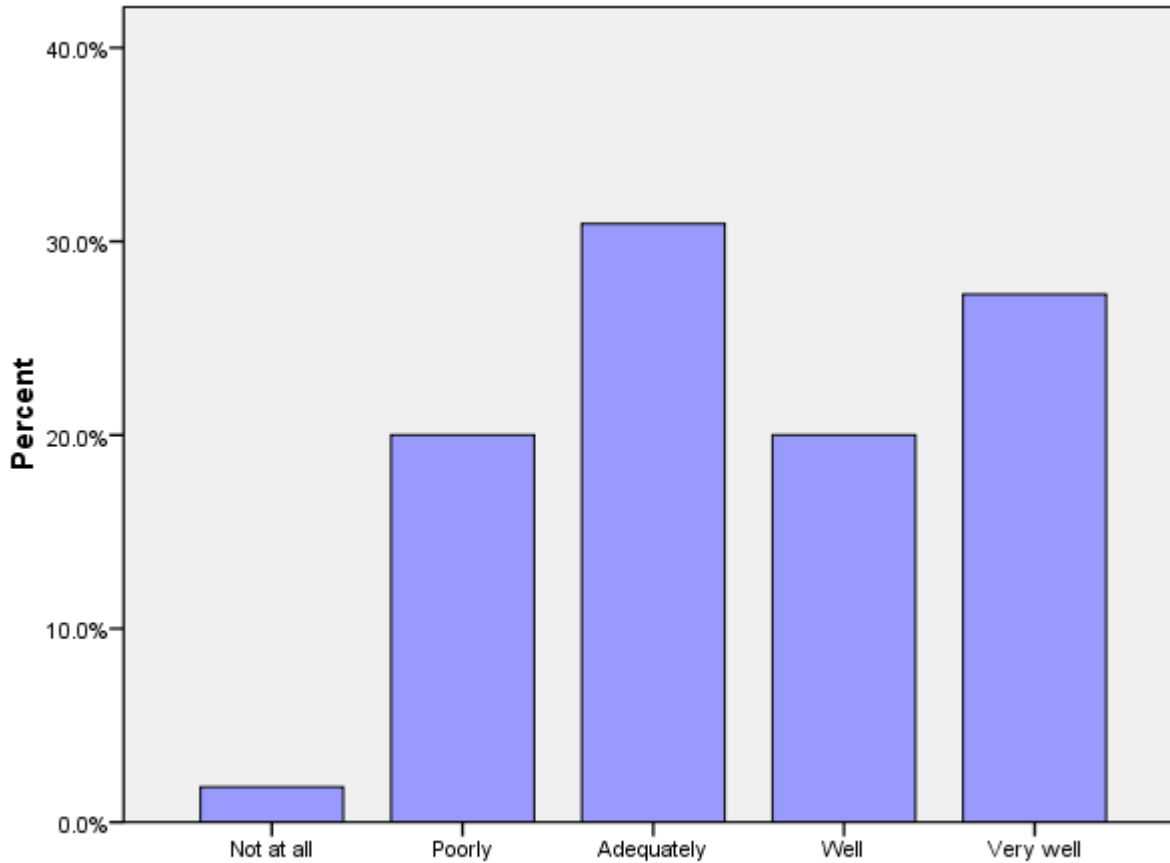
	No	Yes, but I haven't used it.	Yes, I have used it.	Total
E13	58%	32%	10%	232

F. Peace Corps Support

This section reports Volunteers' assessments of in-country Peace Corps.

F1 (PCVs at post 9+ months): How prepared for your arrival were the host people with whom you work?

	Not at all	Poorly	Adequately	Well	Very well	Total
F1	2%	20%	31%	20%	27%	55



F1: When you arrived at your community, how prepared for your arrival were the host people with whom you work?

F2: How satisfied are you with the health care you received from your PCMO(s)?

	Not at all	Minimally	Adequately	Considerably	Exceptionally	Not Used	Total
F2	0%	2%	24%	30%	39%	5%	229

F3: How satisfied are you with the following support provided by in-country PC staff?

	Not at all 1	2	3	4	Completely 5	NA	Total
Administrative/logistical	1%	9%	24%	32%	34%		229
Cross-cultural	2%	12%	21%	38%	26%	1%	229
Emotional	6%	16%	24%	25%	20%	8%	229
Feedback on my work reports	7%	15%	25%	24%	19%	10%	231
Job assignment	6%	13%	28%	26%	27%	0%	231
Language learning	0%	8%	17%	36%	39%		230
Medical	0%	4%	17%	34%	43%	2%	230
Safety and security	0%	1%	14%	36%	47%	1%	231
Site selection/preparation	11%	13%	25%	27%	24%		231
Technical skills	3%	14%	30%	33%	18%	4%	227

F4: How satisfied are you with the Peace Corps allocation of time and resources to mental health/adjustment issues?

	Not at all satisfied 1	2	3	4	Completely satisfied 5	Total
F4	6%	17%	34%	24%	19%	229

F5: What level of PC support have you received to help cope with stress from issues such as HIV/AIDS, food insecurity, etc. in your community? (Including PCVs w/no need for support)

	No support	Minimal support	Adequate support	Considerable support	Exceptional support	NA / I have no need for support	Total
F5	2%	12%	20%	11%	7%	48%	230

F5: What level of PC support have you received to help cope with stress from issues such as HIV/AIDS, food insecurity, etc. in your community? (Excluding PCVs w/no need for support)

	No support	Minimal support	Adequate support	Considerable support	Exceptional support	Total
F5	4%	23%	39%	21%	12%	120

F6: How would you rate your interaction with the Country Director in terms of the following?

	Not adequate	Adequate	Total
Responsiveness to my issues	11%	89%	217
Informative content	15%	85%	220
My comfort level discussing issues	20%	80%	217
Adequacy of visits	25%	75%	204

F6b: How would you rate your interaction with the PTO/SRPTC in terms of the following?

	Not adequate	Adequate	Total
Responsiveness to my issues	9%	91%	207
Informative content	9%	91%	207
My comfort level discussing issues	12%	88%	203
Adequacy of visits	15%	85%	192

F6c: How would you rate your interaction with the APCD/Program Manager in terms of the following?

	Not adequate	Adequate	Total
Responsiveness to my issues	8%	92%	199
Informative content	8%	92%	198
My comfort level discussing issues	10%	90%	194
Adequacy of visits	18%	82%	188

F6d: How would you rate your interaction with the PCMO in terms of the following?

	Not adequate	Adequate	Total
Responsiveness to my issues	5%	95%	222
Informative content	5%	95%	221
My comfort level discussing issues	8%	92%	218
Adequacy of visits	6%	94%	205

F6e: How would you rate your interaction with the Safety and Security Coordinator in terms of the following?

	Not adequate	Adequate	Total
Responsiveness to my issues	1%	99%	217
Informative content	4%	96%	215
My comfort level discussing issues	6%	94%	212
Adequacy of visits	8%	92%	204

F6f: How would you rate your interaction with the Training Manager in terms of the following?

	Not adequate	Adequate	Total
Responsiveness to my issues	8%	92%	215
Informative content	11%	89%	218
My comfort level discussing issues	11%	89%	212
Adequacy of visits	11%	89%	203

F6g: How would you rate your interaction with administrative staff in terms of the following?

	Not adequate	Adequate	Total
Responsiveness to my issues	10%	90%	216
Informative content	9%	91%	222
My comfort level discussing issues	9%	91%	214
Adequacy of visits	11%	89%	203

F6h: How would you rate your interaction with other post staff (please specify) in terms of the following?

	Not adequate	Adequate	Total
Responsiveness to my issues	36%	64%	33
Informative content	23%	77%	31
My comfort level discussing issues	21%	79%	29
Adequacy of visits	23%	77%	31

F7: To what extent is your CD aware of Volunteer issues and concerns through interactions with Volunteers?

	Not at all	Minimally	Adequately	Considerably	Completely	Total
F7	4%	18%	35%	33%	11%	226

F8: What is the most effective way you use to communicate with PC staff?

Most effective	Cellphone (voice)	41%	95
	Email/ Internet	38%	87
	Text messaging	14%	31
	In-person visits	3%	8
	Telephone at residence or work	3%	6
	Telephone not at residence or work	0%	1
	Letters	0%	1
	Other. Please specify		
	CB radio		
	Total	100%	229

F8: What is the second most effective way you use to communicate with PC staff?

Second most effective	Email/ Internet	41%	93
	Cellphone (voice)	28%	63
	Text messaging	19%	44
	Telephone at residence or work	5%	11
	In-person visits	3%	7
	Telephone not at residence or work	2%	4
	Letters	2%	4
	Other. Please specify		
	CB radio		
	Total	100%	226

F8: What is the third most effective way you use to communicate with PC staff?

(C11_THREE) Third most effective	Text messaging	36%	80
	Email/ Internet	21%	46
	In-person visits	19%	42
	Cellphone (voice)	15%	33
	Telephone at residence or work	4%	10
	Telephone not at residence or work	3%	6
	Letters	3%	6
	Other. Please specify	0%	1
	CB radio		
	Total	100%	224

F9: How do you rate the effectiveness of your communication resources for contacting in-country PC staff?

	Very poor	Poor	Adequate	Good	Excellent	Total
F9		0%	20%	34%	46%	232

G. Your Safety and Security

This section reports on how safe and informed about their safety Volunteers feel. Their experiences with reported and unreported crimes are summarized.

G1: How safe do you feel...?

	Not at All Safe	Often Safe	Adequately Safe	Usually Safe	Very Safe	Total
Where you live	1%	4%	11%	35%	49%	231
Where you work		2%	7%	21%	71%	231
When you travel in-country		9%	30%	46%	15%	231
City where main Peace Corps office is located		9%	31%	40%	21%	229

G2: Please indicate the number of times you experienced the following types of discrimination/harassment.

	Never	Once	2-5 times	6-10 times	11-25 times	26+ times	Total
Age	94.0%	1.2%	3.0%	.6%	.6%	.6%	167
Anti-American	54.9%	18.1%	20.9%	3.8%	1.6%	.5%	182
Disability	100.0%						165
Gender	90.6%	2.3%	5.3%	1.2%	.6%		171
Racial/color	88.8%	2.9%	4.7%	1.2%	2.4%		170
Religious	95.8%	1.8%	1.8%	.6%			166
Sexual (verbal)	74.9%	11.4%	12.0%	1.1%	.6%		175
Sexual (physical)	80.9%	11.0%	8.1%				173
Sexual orientation	98.2%		1.8%				165

G2: Please indicate the number of times you reported discrimination/harassment events to PC.

	Never	Once	2-5 times	6-10 times	11-25 times	26+ times	Total
Age	85.7%	14.3%					7
Anti-American	80.8%	16.4%	2.7%				73
Gender	100.0%						15
Racial/color	63.2%	21.1%	15.8%				19
Religious	100.0%						6
Sexual (verbal)	81.0%	14.3%	4.8%				42
Sexual (physical)	71.9%	25.0%	3.1%				32
Sexual orientation	66.7%	33.3%					3

G3: Please indicate the number of times you experienced the following types of crimes.

	Never	Once	2-5 times	6-10 times	11-25 times	26+ times	Total
Burglary	96.4%	3.0%	.6%				168
Theft	69.3%	23.5%	7.3%				179
Robbery	97.0%	1.8%	1.2%				169
Physical assault	85.6%	13.2%	1.1%				174
Aggravated assault	99.4%	.6%					168
Sexual assault	96.4%	3.0%	.6%				168
Rape	100.0%						165

G3: Please indicate the number of times you reported the following crimes to Peace Corps.

	Never	Once	2-5 times	6-10 times	11-25 times	26+ times	Total
Burglary	57.1%	42.9%					7
Theft	21.4%	60.7%	17.9%				56
Robbery	50.0%	25.0%	25.0%				4
Physical assault	47.8%	52.2%					23
Aggravated assault		100.0%					1
Sexual assault	50.0%	50.0%					6

G4a: If you did not report your experience with burglary, please your reason(s) for not reporting.

		PCV Responses	% Reason Not Rptd	Total PCVs Responding
\$NoRpBurg	I felt it was too minor or common to report	4	67%	6
	I did not think the PC could help	1	17%	
	Other	1	17%	
	I believed it could result in changing sites			
	Concerns of a possible breach in confidentiality			
	Reporting might result in disciplinary action against me			
	It might hurt my relationship with the community			
	Total			

*Percents may total to more than 100% since Volunteers were asked to "mark all that apply."

G4b: If you did not report your experience with theft, please your reason(s) for not reporting.

		PCV Responses	% Reason Not Rptd	Total PCVs Responding
\$NoRpTheft	I felt it was too minor or common to report	12	67%	
	Other	5	28%	
	I did not think the PC could help	3	17%	
	It might hurt my relationship with the community	2	11%	
	I believed it could result in changing sites			
	Concerns of a possible breach in confidentiality			
	Reporting might result in disciplinary action against me			
	Total			

*Percents may total to more than 100% since Volunteers were asked to "mark all that apply."

G4c: If you did not report your experience with robbery, please your reason(s) for not reporting.

	PCV Responses	% Reason Not Rptd	Total PCVs Responding
\$NoRpRobb			
I did not think the PC could help	1	50%	
Other	1	50%	
I believed it could result in changing sites			
I felt it was too minor or common to report			
Concerns of a possible breach in confidentiality			
Reporting might result in disciplinary action against me			
It might hurt my relationship with the community			
Total			2

*Percents may total to more than 100% since Volunteers were asked to "mark all that apply."

G4d: If you did not report your experience with physical assault, please your reason(s) for not reporting.

	PCV Responses	% Reason Not Rptd	Total PCVs Responding
\$NoRpPhAs	I felt it was too minor or common to report	7	50%
	I did not think the PC could help	5	36%
	Reporting might result in disciplinary action against me	3	21%
	I believed it could result in changing sites	1	7%
	Concerns of a possible breach in confidentiality	1	7%
	It might hurt my relationship with the community	1	7%
	Other	1	7%
	Total		

*Percents may total to more than 100% since Volunteers were asked to "mark all that apply."

G4: If you did not report your experience with aggravated assault, please your reason(s) for not reporting.

		PCV Responses	% Reason Not Rptd	Total PCVs Responding
\$NoRpAgAs	I did not think the PC could help	1	50%	
	Other	1	50%	
	I believed it could result in changing sites			
	I felt it was too minor or common to report			
	Concerns of a possible breach in confidentiality			
	Reporting might result in disciplinary action against me			
	It might hurt my relationship with the community			
	Total			

*Percents may total to more than 100% since Volunteers were asked to "mark all that apply."

G4e: If you did not report your experience with sexual assault, please your reason(s) for not reporting.

	PCV Responses	% Reason Not Rptd	Total PCVs Responding
\$NoRpSxAs	I felt it was too minor or common to report	6	67%
	I did not think the PC could help	3	33%
	Other	2	22%
	Concerns of a possible breach in confidentiality	1	11%
	It might hurt my relationship with the community	1	11%
	I believed it could result in changing sites		
	Reporting might result in disciplinary action against me		
	Total		

*Percents may total to more than 100% since Volunteers were asked to "mark all that apply."

G4f: If you did not report your experience with rape, please your reason(s) for not reporting.

		PCV Responses	% Reason Not Rptd	Total PCVs Responding
\$NoRpRape	I did not think the PC could help	1	50%	
	Other	1	50%	
	I believed it could result in changing sites			
	I felt it was too minor or common to report			
	Concerns of a possible breach in confidentiality			
	Reporting might result in disciplinary action against me			
	It might hurt my relationship with the community			
	Total			

*Percents may total to more than 100% since Volunteers were asked to "mark all that apply."

H. Volunteers Working in HIV/AIDS

This section reports Volunteers' involvement in HIV/AIDS and their perceived effectiveness of their HIV/AIDS related activities.

H1: Which of the following best describes your involvement in HIV/AIDS activities?

	HIV/AIDS work is my primary assignment.	HIV/AIDS work is part of my secondary activities.	Involved in HIV/AIDS efforts, not primary/secondary work	Not involved in any HIV/AIDS related activities	Total
H1	8%	35%	27%	30%	228

H2: How well has PC training prepared you to undertake your HIV/AIDS activities?

	Not at all	Poorly	Adequately	Well	Very well	NA	Total
H2	3%	10%	24%	20%	39%	4%	157

H3: In working with HC individuals or groups, how would you rate the effectiveness of your specific HIV/AIDS activities? (Including the "Don't Know" responses)

	Seldom effective	Sometimes effective	Often effective	Almost always effective	Don't know	Total
H3	1%	29%	37%	17%	16%	156

H3: In working with HC individuals or groups, how would you rate the effectiveness of your specific HIV/AIDS activities? (Excluding the "Don't Know" responses)

	Seldom effective	Sometimes effective	Often effective	Almost always effective	Total
H3	2%	34%	44%	20%	131

I. Your Life in the Peace Corps

This section reports on Volunteers' descriptions of and adjustments to their living conditions, including stress factors and how Volunteers cope with stress.

I1: Have you lived with a host country individual or family?

	Never lived with a host country individual or family	Yes, I lived with a host country individual or family only	Yes, in my community (not during PST).	Yes, both during PST and later in my community.	Total
I1	1%	28%	2%	69%	229

I2: How often do you interact with HCNs in community/family social events?

	Daily	Several times a week	Weekly	Several times a month	Monthly	Less than once a month	Total
I2	21%	28%	15%	15%	9%	11%	229

I3: How well can you communicate in the language used by most people in your community?

	Not at all	Poorly	Adequately	Well	Very well	Total
I3		20%	50%	18%	12%	228

I4: Do you have the following at your worksite?

	Never	Sometimes or more often	Total
Electricity	0%	100%	227
Running water	7%	93%	224

I4: Do you have the following at your residence?

	Never	Sometimes or more often	Total
Electricity		100%	225
Running water	5%	95%	224

I5: How well do your PC experiences match the expectations you had before you became a Volunteer?

	Not at all	Minimally	Moderately	Considerably	Exceptionally	Total
I5	6%	18%	41%	29%	6%	228

17: To what extent do the following create stress and/or emotional health issues for you?

	Not at all stressful 1	2	3	4	Exceptionally stressful 5	NA	Total
Cultural issues	9%	28%	37%	18%	7%	1%	228
Dealing with violence in country (e.g., civil unrest, domestic violence, corporal punishment)	42%	29%	13%	6%	2%	9%	228
Health/medical problems	29%	27%	29%	12%	2%	2%	228
Issues including family, friends, loved ones in U.S.	17%	31%	27%	17%	8%	1%	228
Isolation/loneliness	14%	30%	23%	22%	10%	1%	229
Local language	7%	24%	37%	25%	7%	0%	229
Primary assignment	11%	24%	31%	20%	13%	1%	227
Romantic relationships in-country	37%	16%	19%	6%	3%	21%	227
Interactions with other Volunteers	41%	32%	19%	5%	1%	2%	229
Interactions with PC Staff	43%	31%	17%	7%	2%	1%	229
Safety and security	40%	36%	15%	7%	1%	1%	226
Other: Please specify below	9%		18%	12%	18%	44%	34

18: Please mark all of the typical ways in which you cope with stress.

	PCV Responses	% Using This Stress Reducer	Total PCVs Responding
\$18LessStress	Talk with friends and family in US	197	88%
	Pursue personal hobbies	194	86%
	Talk with PCVs outside my community	184	82%
	Do sports	166	74%
	Leave the community for a time	141	63%
	Talk with co-workers or friends (not PCVs)	120	53%
	Get involved in other projects	109	48%
	Talk with PCVs in my community	106	47%
	Talk with my host family	58	26%
	Pray	48	21%
	Meditate	46	20%
	Talk with PC in-country staff	29	13%
	Do other activity (specify)	27	12%
	Talk with Office of Special Services staff	4	2%
	Total		225

*Percents total to more than 100% since Volunteers were asked to "mark all that apply."

18: Others I talk with to reduce stress

	Percent	Number
18.OTHR.S.TEXT	Open-ended results. Not responsive to request.	
Total	100%	235

I8: Other activities to reduce stress

	Percent	Number
I8.OTHRACT.TEXT2	Open-ended results. Not responsive to request.	

Open-ended results. Not responsive to request.

	Total	100%	235
--	-------	------	-----

I8: When asked about ways of coping with stress, Volunteers who answered "No stress"

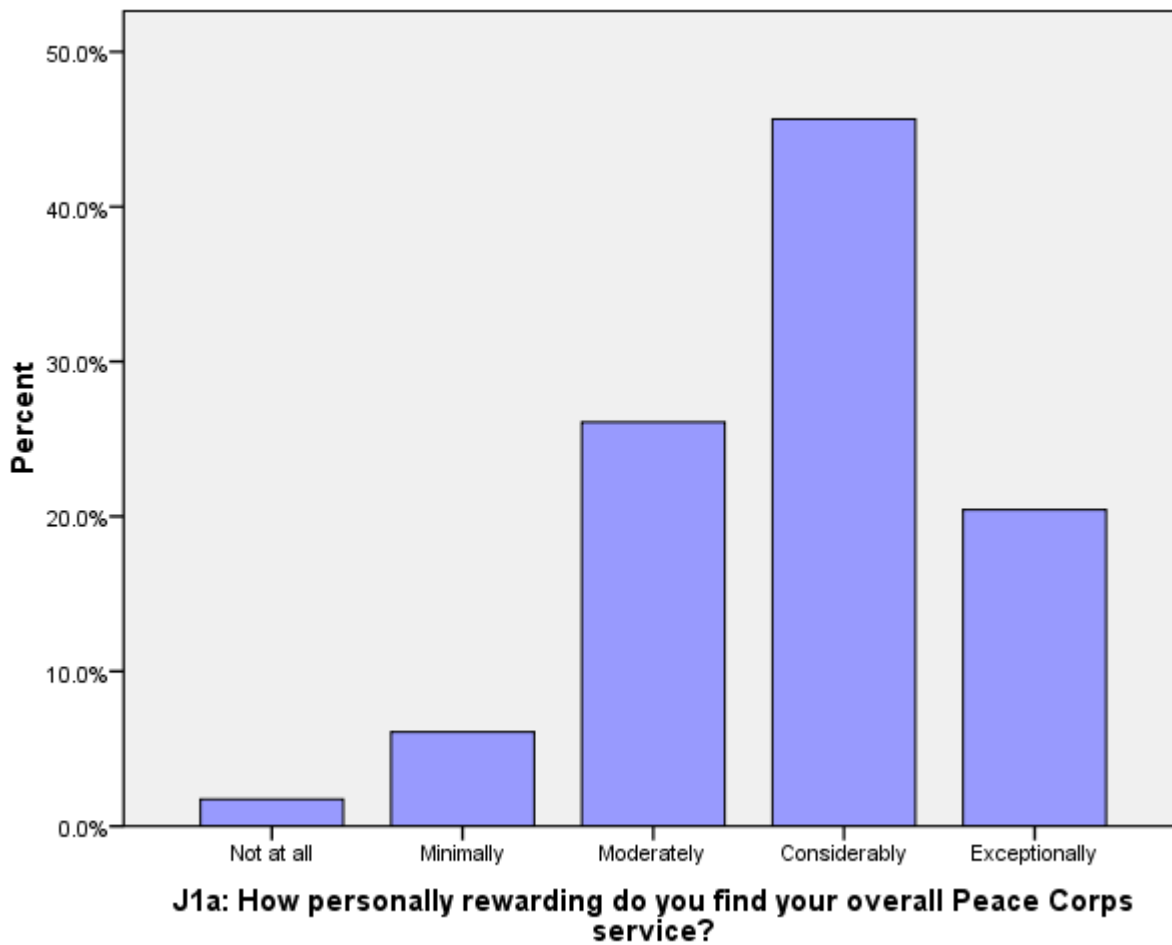
	No	Yes, I have no stress	Total
I8.NOSTRESS	98%	2%	235

J. Overall Assessment of Peace Corps Service

This section reports Volunteers' level of satisfaction with their Peace Corps service and their expectations about completing their service.

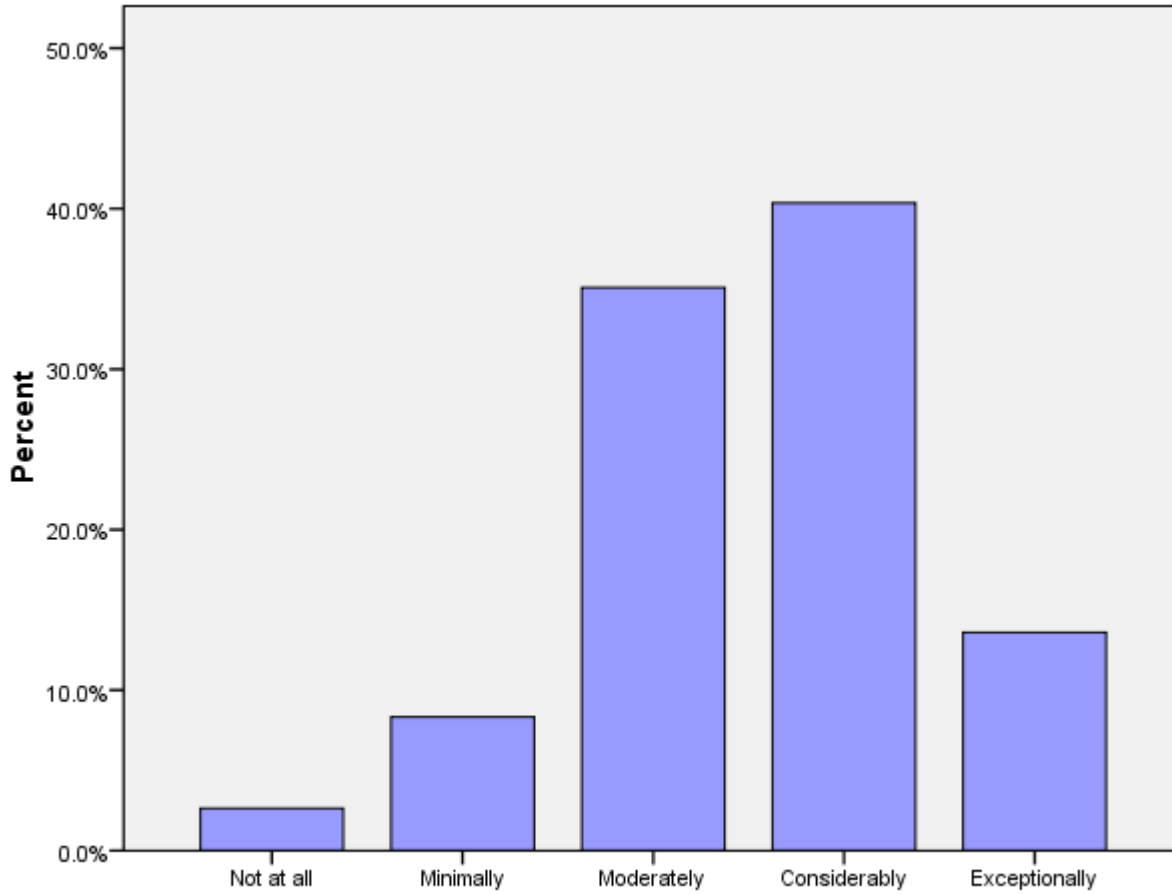
J1a: How personally rewarding do you find your overall Peace Corps service?

	Not at all	Minimally	Moderately	Considerably	Exceptionally	Total
J1A	2%	6%	26%	46%	20%	230



J1b: How personally rewarding do you find your community involvement?

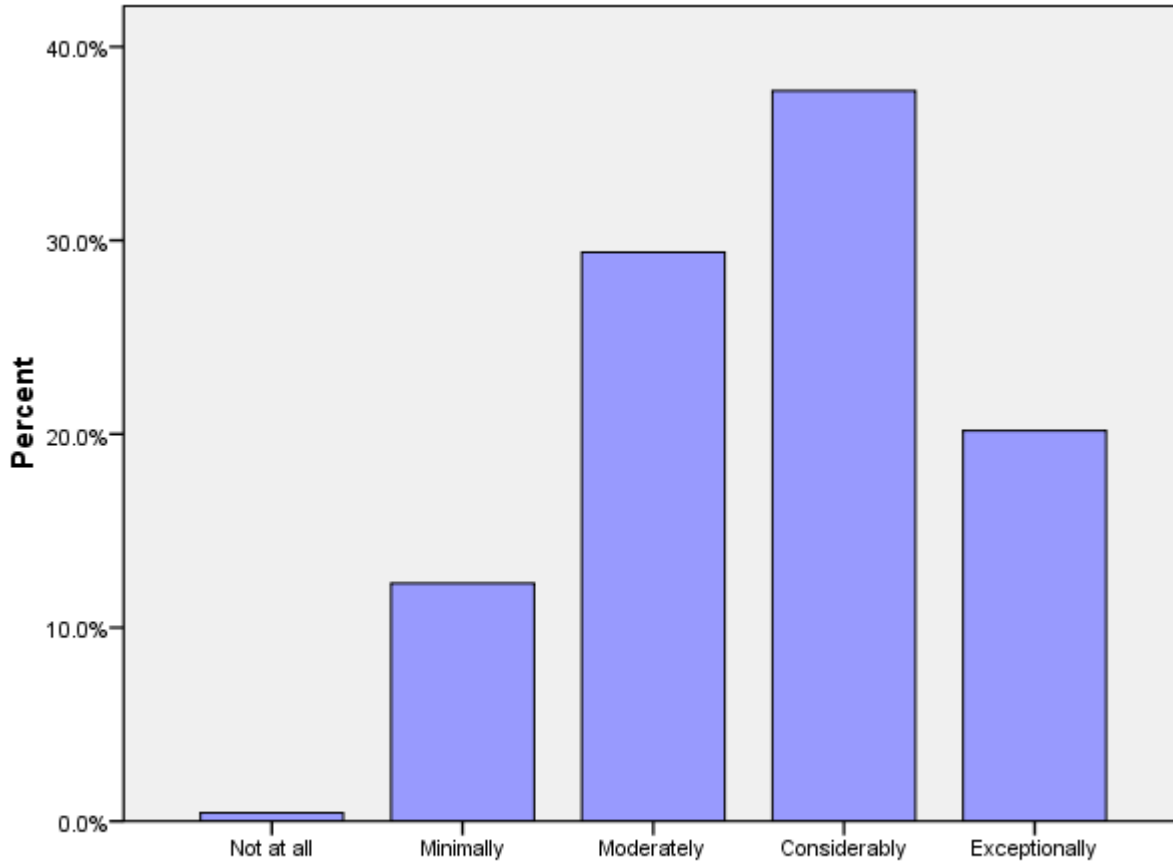
	Not at all	Minimally	Moderately	Considerably	Exceptionally	Total
J1B	3%	8%	35%	40%	14%	228



J1b: How personally rewarding do you find your community involvement?

J1c: How personally rewarding do you find your experience with other Volunteers?

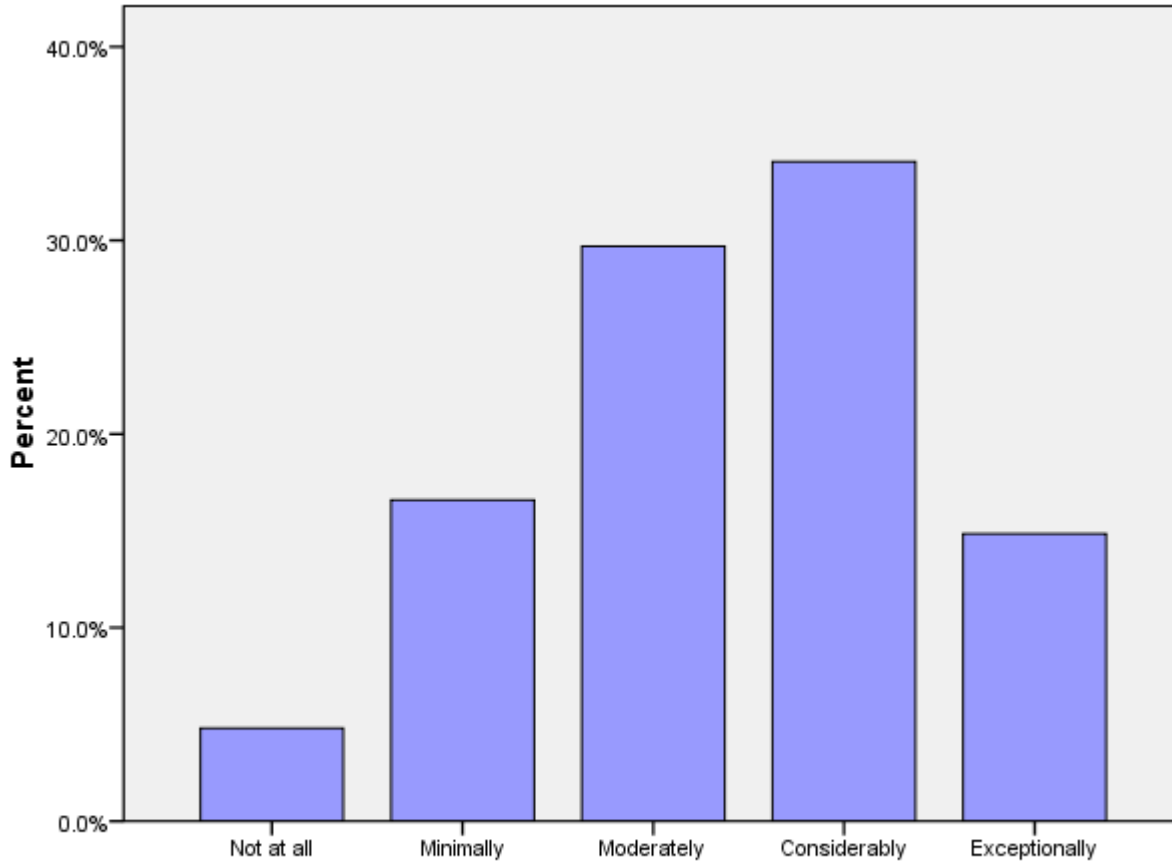
	Not at all	Minimally	Moderately	Considerably	Exceptionally	Total
J1C	0%	12%	29%	38%	20%	228



J1c: How personally rewarding do you find your experience with other Volunteers?

J1d: How personally rewarding do you find your work with counterparts/community partners?

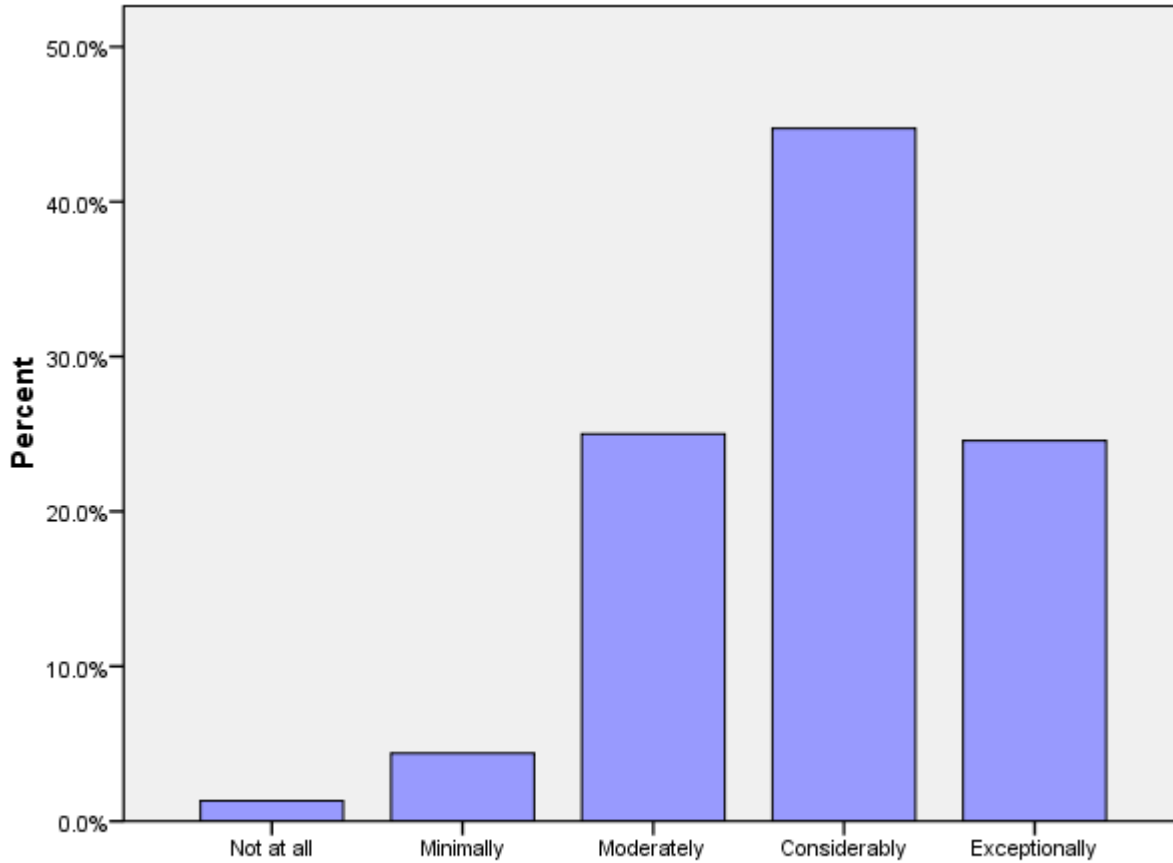
	Not at all	Minimally	Moderately	Considerably	Exceptionally	Total
J1D	5%	17%	30%	34%	15%	229



J1d: How personally rewarding do you find your work with counterparts/community partners?

J1e: How personally rewarding do you find your experience with other HCNs?

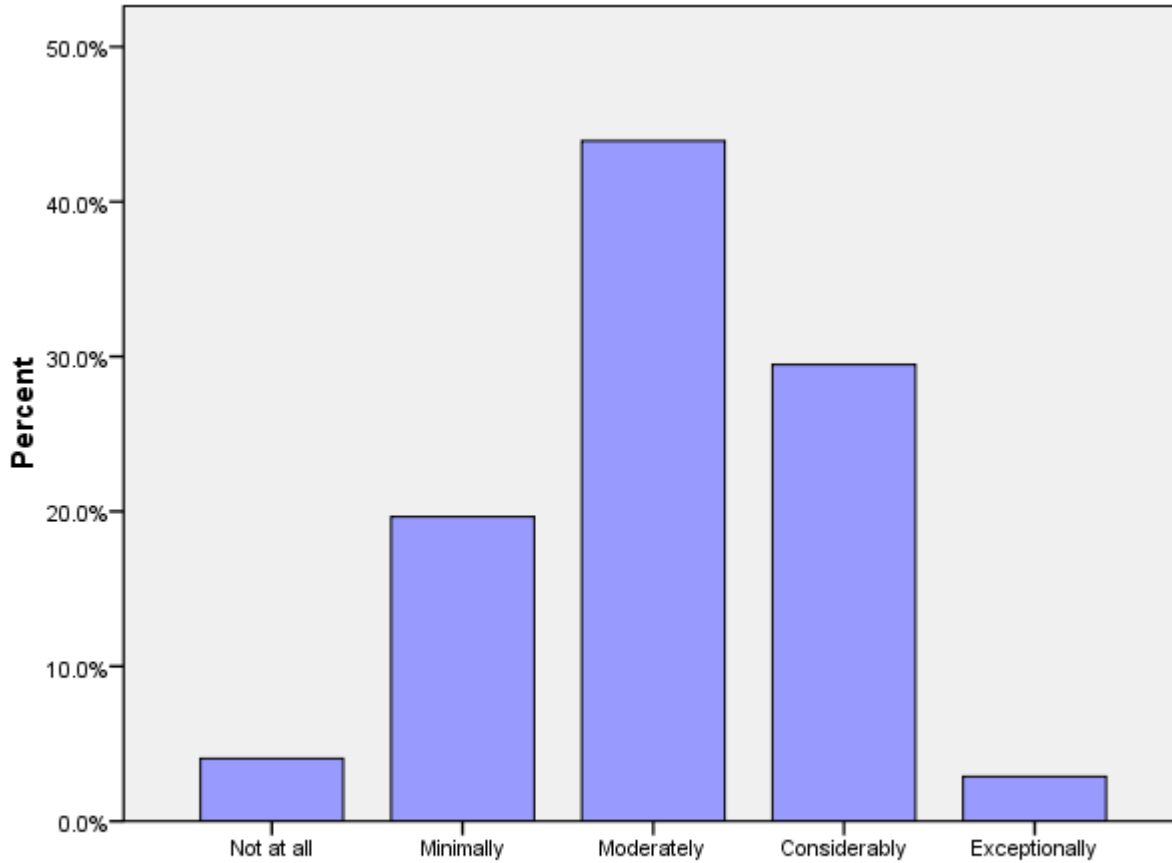
	Not at all	Minimally	Moderately	Considerably	Exceptionally	Total
J1E	1%	4%	25%	45%	25%	228



J1e: How personally rewarding do you find your experience with other HCNs?

J2a (PCVs at post 9 months+ months): Please rate how well you think you achieved Goal 1.

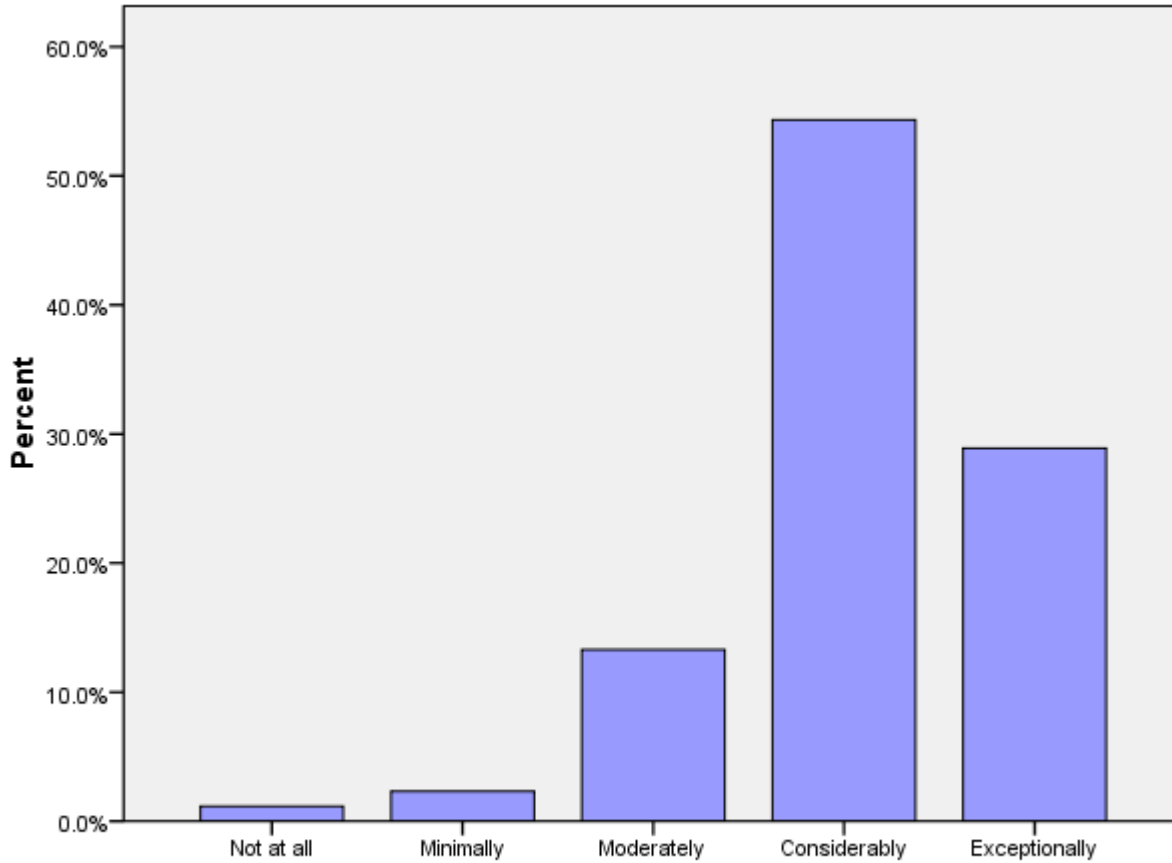
	Not at all	Minimally	Moderately	Considerably	Exceptionally	Total
J2A	4%	20%	44%	29%	3%	173



J2a (PCVs at post 9 months+ months): Rate how well you think you achieved Goal 1.

J2b: (PCVs at post 9 months+ months): Please rate how well you think you achieved Goal 2.

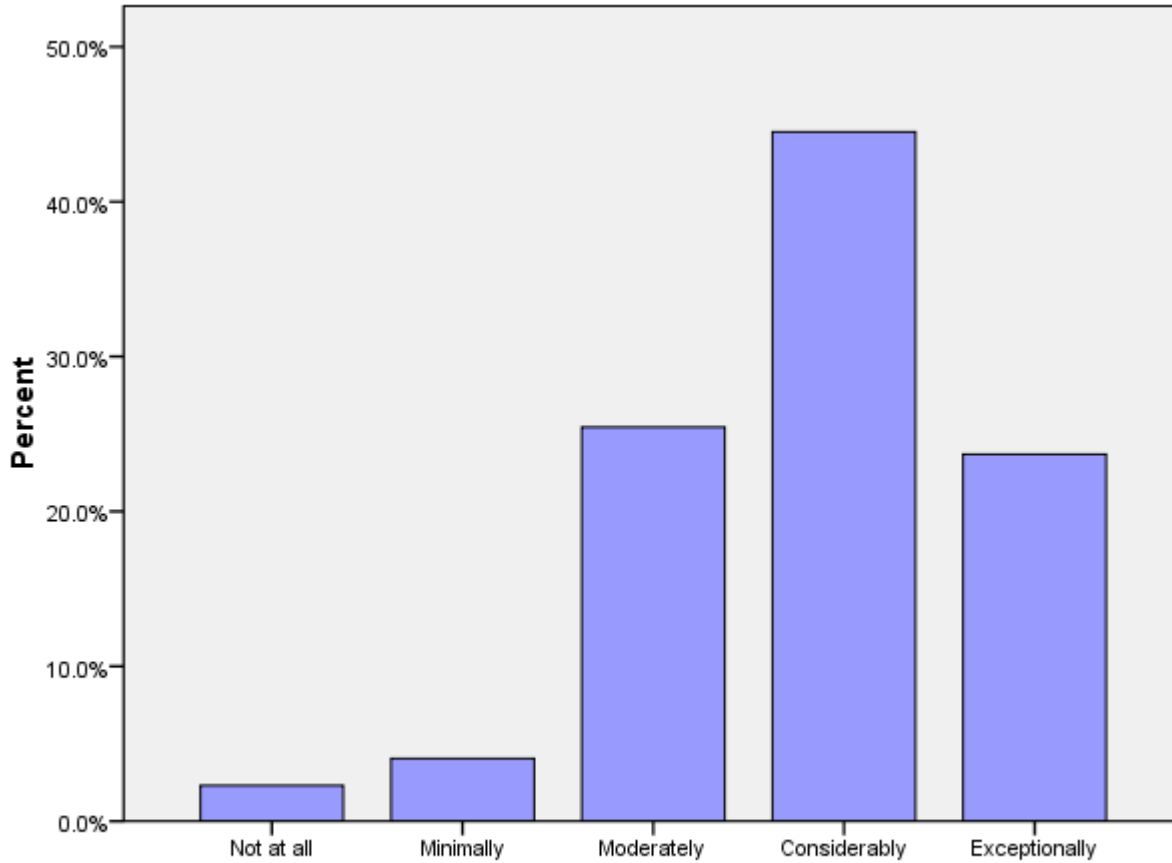
	Not at all	Minimally	Moderately	Considerably	Exceptionally	Total
J2B	1%	2%	13%	54%	29%	173



J2b (PCVs at post 9 months+ months): Rate how well you think you achieved Goal 2.

J2c (PCVs at post 9 months+ months): Please rate how well you think you achieved Goal 3.

	Not at all	Minimally	Moderately	Considerably	Exceptionally	Total
J2C	2%	4%	25%	45%	24%	173



J2c (PCVs at post 9 months+ months): Please rate how well you think you achieved Goal 3.

J3: Today, would you make the same decision to join the Peace Corps?

	No	Not likely	Possibly	Probably	Definitely	Total
J3	1%	1%	8%	21%	68%	229

J4: Would you recommend Peace Corps service to others you think are qualified?

	No	Not likely	Possibly	Probably	Definitely	Total
J4	1%	1%	11%	22%	65%	229

J5: Do you intend to complete your Peace Corps service?

	No	Not sure	Yes	Might extend	Total
J5	2%	2%	78%	18%	229

J6: Would your host country benefit most if the Peace Corps program was---?

	Discontinued	Reduced	Refocused/redesig ned	Maintained as is	Expanded	Total
J6	0%	9%	59%	20%	11%	228

K. Activities After Peace Corps Service

This section reports on Volunteers' plans for after they have completed their Peace Corps Service.

K1a: What are your plans after your Peace Corps service? Work in government.

Government			
In the U.S.	In your host country	In another country	N
89%	14%	25%	28

* Percent of cases was used. Percentages will be greater than 100 since Volunteers were asked to select all that applied.

K1b: What are your plans after your Peace Corps service? Work in the private sector.

Private Sector			
In the U.S.	In your host country	In another country	N
87%	17%	39%	23

* Percent of cases was used. Percentages will be greater than 100 since Volunteers were asked to select all that applied.

K1c: What are your plans after your Peace Corps service? Work for an NGO.

NGO			
In the U.S.	In your host country	In another country	N
84%	16%	35%	31

* Percent of cases was used. Percentages will be greater than 100 since Volunteers were asked to select all that applied.

K1d: What are your plans after your Peace Corps service? Work for PC Response.

Peace Corps Response			
In the U.S.	In your host country	In another country	N
80%	20%	47%	15

* Percent of cases was used. Percentages will be greater than 100 since Volunteers were asked to select all that applied.

K1e: What are your plans after your Peace Corps service? Continue to participate in volunteer activities.

Volunteer Activities			
In the U.S.	In your host country	In another country	N
92%	10%	20%	40

* Percent of cases was used. Percentages will be greater than 100 since Volunteers were asked to select all that applied.

K1f: What are your plans after your Peace Corps service? Graduate school/academic credentialing.

Graduate School			
In the U.S.	In your host country	In another country	N
95%	2%	2%	41

* Percent of cases was used. Percentages will be greater than 100 since Volunteers were asked to select all that applied.

K1g: What are your plans after your Peace Corps service? Travel.

Travel			
In the U.S.	In your host country	In another country	N
66%	11%	47%	53

* Percent of cases was used. Percentages will be greater than 100 since Volunteers were asked to select all that applied.

K1h: What are your plans after your Peace Corps service? Other.

Other			
In the U.S.	In your host country	In another country	N
80%	0%	40%	5

* Percent of cases was used. Percentages will be greater than 100 since Volunteers were asked to select all that applied.

K2: How prepared do you feel to share your Peace Corps experience and knowledge of your host country with others in the United States when you return?

	Not at all	Minimally	Moderately	Considerably	Total
How prepared do you feel to share your Peace Corps experience and knowledge of your host country with others in the United States when you return?	1%	1%	22%	76%	88

K3: How well do you feel Peace Corps has prepared you for life in the U. S. after you return?

	Not at all	Minimally	Moderately	Considerably	Exceptionally	Total
How well do you feel Peace Corps has prepared you for life in the U. S. after your return?	3%	15%	33%	38%	10%	87

K6: Have your life/career goals changed because of your Peace Corps service?

	No	Yes	Total
Have your life/career goals changed because of your Peace Corps service?	52%	48%	80

K7: How well informed are you about the following opportunities for returned Volunteers:

	Not informed	Somewhat informed	Well informed	N
Peace Corps Response	48%	30%	22%	87
Peace Corps' Fellows/USA program	18%	45%	37%	87
Noncompetitive eligibility	12%	49%	39%	88
RPCV Career Center in Washington, D.C.	31%	40%	30%	88
Returned Volunteer Services	32%	42%	26%	88

K8: How did you first learn about the Fellows/USA program?

Learn about Fellows/USA program	PC Website	48%
	Word of mouth	23%
	At COS Conference	22%
	From a recruiter	16%
	Other	6%
	At PST	5%
	From staff in the host country's PC office	5%
	University website	4%
	At IST	3%
	Hotline	1%
	Mid-service mailing from PC	1%
	At post's information resource center	0%
	N	77

* Percent of cases was used. Percentages will be greater than 100 since Volunteers were asked to select all that applied.

**K9: Which of the following resources do you think will be helpful as you exit
Peace Corps service?**

K9 Resources	RPCV Handbook	62%	
	Career Resource Manual	60%	
	Applying to federal government with RPCV noncompetitive eligibility	57%	
	Access to free job bulletins	50%	
	List of RPCVs willing to talk to me about their careers	46%	
	RPCV career conferences	46%	
	RPCV job search webinars	45%	
	Electronic newsletter with job postings and career advice	44%	
	Connection with RPCVs through a mentoring program	40%	
	Guide to speaking about my PC service to others (third goal)	37%	
	Self-assessment software (SIGI 3)	23%	
	NOT SURE	12%	
	Other	2%	
	N		84

* Percent of cases was used. Percentages will be greater than 100 since Volunteers were asked to select all that applied.

K10: Which of the following third goal (helping promote a better understanding of peoples on the part of Americans) activities do you plan to do when you return to the U. S.?

K10 Third Goal	Continue with volunteerism and service learning	82%	
	Join a RPCV group	65%	
	Speak to a group of adults about my experience	62%	
	Speak to school age children about my experience	55%	
	Participate in PC Week	42%	
	Write stories from my PC service on my own	40%	
	Obtain and use PC third goal resources	18%	
	NOT SURE	12%	
	Write stories from my PC service in conjunction with CWWS	6%	
	Other	2%	
	N		85

* Percent of cases was used. Percentages will be greater than 100 since Volunteers were asked to select all that applied.