



**Peace Corps Volunteer
2009 Annual Volunteer Survey**

**Vanuatu
October 4, 2009**

Office of Strategic Information, Research and Planning

Table of Contents

| | |
|--|-----------|
| Introduction to the 2009 Annual Volunteer Survey Report | 3 |
| Overview of the Post's 2009 Volunteer Survey Respondents..... | 4 |
| A. Applying to the Peace Corps..... | 6 |
| B. Preparation for the Peace Corps..... | 8 |
| C. Your Peace Corps Assignment | 9 |
| D. Training for Peace Corps Assignment | 14 |
| E. Volunteer Assignment Goals and Impact..... | 18 |
| F. Peace Corps Support..... | 26 |
| G. Your Safety and Security | 33 |
| H. Volunteers working in HIV/AIDS..... | 42 |
| I. Your Life in the Peace Corps | 43 |
| J. Overall Assessment of Peace Corps Service | 48 |
| K. Activities After Peace Corps Service..... | 57 |

Introduction to the 2009 Annual Volunteer Survey Report

This country report contains the tables and charts from the Volunteers in your country who completed the 2009 Annual Volunteer Survey (AVS). The results provide a picture of the activities, experiences and views of Peace Corps Volunteers in 2009. The results show areas where Volunteers' needs are met and identify areas where improvements may be needed. The survey was fielded from May through August 2009.

A core set of questions was asked of all Volunteers. For the first time, Volunteers were also asked a series of questions relevant to their time in country:

- Volunteers in country 8 or less months were asked about applying to and preparing for the Peace Corps.
- Volunteers in country 18 or less months were asked about the effectiveness of their pre-service training (PST).
- Volunteers in country 19 or more months were asked about their post-service plans, as well as the Peace Corps' resources for their post-service transition.

Tables and graphs are labeled by survey section and the survey question. The tables show the percent of post respondents that selected each choice and the total number of post respondents that answered the question. The number of responses for each question will vary, depending on:

- whether the question was asked of all Volunteers or only the Volunteers in-country a certain number of months and
- how many of the Volunteers who were "eligible" to answer the question did respond.

Most survey questions asked respondents to select only one from a set of choices. The percentages for the "select one" responses add up to 100 percent. Other questions asked Volunteers to "mark all that apply" in situations, for example, where it is likely that respondents are involved in more than one secondary activity. The percentages of the "mark all that apply" responses will total more than 100 percent; each percentage equals the number of respondents selecting that choice divided by the number of respondents who answered the question.

Posts are encouraged to compare these 2009 results with the 2006 and 2008 survey results to note trends and changes over time. Because questions are revised from one survey to the next, a crosswalk between the 2008 and 2009 questions is posted on the OSIRP intranet page under 2009 AVS Reports "Reference Documents." The earlier 2008 survey global, regional and post reports are also posted on the OSIRP Intranet page.

Volunteers' extensive narrative responses to the 29 open-ended questions on the survey are in the post's 2009 Annual Volunteer Survey Open Ended Responses report. All Volunteers' narrative responses to key questions will be analyzed for global themes and presented in a later report.

The number of surveys for each post includes surveys submitted online by Volunteers and completed paper surveys sent to the Peace Corps headquarters for hand-entry into the online survey system. The final count may include mostly completed partial surveys added to the final dataset after the survey closed.

Overview of the Post's 2009 Volunteer Survey Respondents

This overview presents basic information about the characteristics of Volunteers who completed the 2009 Annual Volunteer Survey at post.

Completed Surveys by Months in Country

| | 8 months or less | | 9 to 18 months | | 19 months or more | | Total | |
|------------|------------------|---------|----------------|---------|-------------------|---------|--------|---------|
| | Number | Percent | Number | Percent | Number | Percent | Number | Percent |
| Months3grp | 5 | 9% | 21 | 36% | 32 | 55% | 58 | 100% |

L1: What is your age?

| | 20-29 | 30-49 | 50+ | Total |
|---------|-------|-------|-----|-------|
| AGE3grp | 66% | 25% | 9% | 53 |

L2: What is your gender?

| | Female | Male | Total |
|--------|--------|------|-------|
| GENDER | 68% | 32% | 56 |

Completed surveys by project.

| | Count | Column N % |
|--|-------|------------|
| Provincial Economic and Community Empowerment (PEACE) | | |
| REACH - Resource Stewardship, Enterprise Promotion, Agricu | 27 | 47% |
| Strengthening Human Resources through Education | 31 | 53% |
| Other. Please specify | | |
| Total | 58 | 100% |

C2: Which best describes the focus of your primary assignment/work?

| | | Percent | Number |
|----|---|---------|--------|
| C2 | Teacher training | 31% | 18 |
| | Business education/advising | 16% | 9 |
| | Health extension | 10% | 6 |
| | Other: Please specify | 9% | 5 |
| | Agriculture/fish/livestock | 7% | 4 |
| | Environmental education | 5% | 3 |
| | Math/science teaching | 5% | 3 |
| | Community development | 5% | 3 |
| | Other education | 3% | 2 |
| | Information & communications technology (ICT) | 3% | 2 |
| | English teaching | 2% | 1 |
| | Agroforestry | 2% | 1 |
| | NGO development | 2% | 1 |
| | Urban & regional planning/municipal development | | |
| | Youth development | | |
| | Water sanitation | | |
| | HIV/AIDS | | |
| | Forestry/parks | | |
| | Total | 100% | 58 |

C2.TEXT: Which of the following initiatives does your primary work include? Other (specify)

| | | PERCENT | NUMBER |
|---------|--|---------|--------|
| C2.TEXT | Open-ended results. Not responsive to request. | | |
| | | | |
| | Total | 100% | 58 |

A. Applying to the Peace Corps

This section reports Volunteers' motivations in applying and accepting a Peace Corps assignment.

A1: How important were the following factors in accepting a PC assignment?

| | Not Important | Somewhat important | Important | NA | Total |
|--------------------------|---------------|--------------------|-----------|----|-------|
| Different culture | 20% | | 80% | | 5 |
| Work experience | | 60% | 40% | | 5 |
| Help others | | 20% | 80% | | 5 |
| International experience | | 20% | 80% | | 5 |
| Language | | 60% | 40% | | 5 |
| Personal growth | 20% | | 80% | | 5 |
| U. S. job market | 100% | | | | 5 |
| Serve my country | 60% | 20% | 20% | | 5 |
| Travel/adventure | | 40% | 60% | | 5 |

A1_OTHER: How important were the following factors in accepting a PC assignment? Other (specify)

| | PERCENT | NUMBER |
|----------|---------|--------|
| A1_OTHER | 100% | 58 |
| Total | 100% | 58 |

A2. What prompted you to apply to the PC? Mark all that apply.

| | | PCV Responses | % Involved in Initiative | Total PCVs Responding |
|----------------------------------|--|---------------|--------------------------|-----------------------|
| What prompted you to apply to PC | Personal interest in the Peace Corps | 4 | 80% | 5 |
| | Returned Peace Corps Volunteer (e.g., someone you met or know personally) | 3 | 60% | |
| | Peace Corps website | 3 | 60% | |
| | Peace Corps recruiter | 1 | 20% | |
| | Article or book about the Peace Corps | 1 | 20% | |
| | Radio, TV, or print advertisement | 1 | 20% | |
| | Returned Peace Corps Volunteer who spoke to your school or group about the Peace Corps | | | |
| | Peace Corps campus or community information session | | | |
| | Peace Corps material in the mail | | | |
| | Other: Please specify | | | |
| | Total | | | |

Percents may total to more than 100% since Volunteers were asked to "Mark all that apply."

A2.OTHER.TEXT: What prompted you to apply to the PC?

Other (specify)

| | PERCENT | NUMBER |
|---------------|---------|--------|
| A2.OTHER.TEXT | 100% | 58 |
| Total | 100% | 58 |

B. Preparation for the Peace Corps

This section reports on Volunteers' assessment of the materials and information available before their service.

B1: How useful was the information on the PC website in preparing you for the realities of living and working as a Volunteer?

| | Not at all 1 | 2 | 3 | 4 | Extremely 5 | Don't know (did not access information) | Total |
|----|--------------|---|-----|-----|-------------|---|-------|
| B1 | | | 80% | 20% | | | 5 |

B2: How useful were the PC materials about your country in helping you prepare for your service?

| | Not at all 1 | 2 | 3 | 4 | Extremely 5 | Don't know (did not access information) | Total |
|----|--------------|-----|-----|-----|-------------|---|-------|
| B2 | | 40% | 40% | 20% | | | 5 |

B3: How useful were the materials you received from the PC about your primary assignment in helping you prepare for your service?

| | Not at all 1 | 2 | 3 | 4 | Extremely 5 | Don't know (did not access information) | Total |
|----|--------------|-----|---|-----|-------------|---|-------|
| B3 | | 80% | | 20% | | | 5 |

B4: How useful were the materials you received from the PC regarding the need for flexibility in adapting to your work?

| | Not at all 1 | 2 | 3 | 4 | Extremely 5 | Don't know (did not access information) | Total |
|----|--------------|---|-----|-----|-------------|---|-------|
| B4 | | | 20% | 40% | 20% | 20% | 5 |

B7: How prepared do you feel to meet the challenges of PC service?

| | Not at all 1 | 2 | 3 | 4 | Exceptionally 5 | Total |
|----|--------------|---|-----|-----|-----------------|-------|
| B7 | | | 40% | 60% | | 5 |

C. Your Peace Corps Assignment

This section reports Volunteers' primary assignment work and secondary activities. The term "primary assignment" refers to the Volunteers' assignment which is part of an overall project plan designed by your host country partners and in-country Peace Corps staff.

C3: Which of the following activities does your primary assignment/work include? Mark all that apply.

| | PCV Responses | % Involved in Initiative | Total PCVs Responding |
|---|---------------|--------------------------|-----------------------|
| \$C3PrmAct Working with youth | 23 | 40% | |
| Literacy | 21 | 37% | |
| Income generation | 19 | 33% | |
| Library development | 15 | 26% | |
| Natural resources management | 15 | 26% | |
| English teaching | 14 | 25% | |
| Business advertising | 13 | 23% | |
| Environment work | 13 | 23% | |
| Rural development | 13 | 23% | |
| Girls' education | 12 | 21% | |
| WID/GAD | 12 | 21% | |
| Information and communications technology (ICT) | 10 | 18% | |
| Water and sanitation | 10 | 18% | |
| World Wise Schools/ Correspondence Match | 10 | 18% | |
| Biodiversity conservation | 9 | 16% | |
| Microenterprise development | 9 | 16% | |
| Nutrition education | 7 | 12% | |
| Working with NGO(s) | 7 | 12% | |
| Other: Please specify | 7 | 12% | |
| HIV/AIDS | 6 | 11% | |
| Arts | 5 | 9% | |
| Community food security (production/marketing) | 5 | 9% | |

| | | | |
|---|---|----|----|
| Sports/fitness | 3 | 5% | |
| Household food security | 2 | 4% | |
| Mobilize host country nationals (HCNs) to volunteer | 1 | 2% | |
| Urban development/municipal development | 1 | 2% | |
| Working with special groups (e.g., disabled, elderly, ethnic minorities, orphans) | 1 | 2% | |
| Child survival | | | |
| Total | | | 57 |

Percents may total to more than 100% since Volunteers were asked to "Mark all that apply."

C3: Which of the following activities does your primary assignment/work include? Other (specify)

| | Column N % | Count | Row N % |
|---------------|--|-------|---------|
| C3.OTHER.TEXT | Open-ended results. Not responsive to request. | | |
| Total | | 58 | 100% |

C4: Hours Spent on Primary Assignment During Average Work Week

| | None | 1-10 hrs | 11-20 hrs | 21-30 hrs | 31-40 hrs | More than 40 hrs | Total |
|-----------|------|----------|-----------|-----------|-----------|------------------|-------|
| C4Hrs6grp | 2% | 20% | 27% | 34% | 14% | 4% | 56 |

C4: How many hours do you spend on your primary assignment during an average work week?

| | All Volunteers | Average | Lowest reported | Highest reported | Did not answer |
|----|----------------|---------|-----------------|------------------|----------------|
| C4 | 58 | 22.2 | 0 | 60 | 2 |

C5: Which of the following do your secondary activities (other than your primary assignment work) include? Mark all that apply.

| | PCV Responses | % Involved in Initiative | Total PCVs Responding |
|---|---------------|--------------------------|-----------------------|
| \$C5SecAct Girls' education | 20 | 39% | |
| Working with youth | 20 | 39% | |
| Water and sanitation | 19 | 37% | |
| Arts | 17 | 33% | |
| Sports/fitness | 17 | 33% | |
| Income generation | 16 | 31% | |
| Environment work | 15 | 29% | |
| World Wise Schools/ Correspondence Match | 15 | 29% | |
| English teaching | 14 | 27% | |
| WID/GAD | 13 | 25% | |
| Business advertising | 12 | 24% | |
| Library development | 11 | 22% | |
| HIV/AIDS | 10 | 20% | |
| Information and communications technology (ICT) | 9 | 18% | |
| Natural resources management | 9 | 18% | |
| Rural development | 9 | 18% | |
| Other: Please specify | 8 | 16% | |
| Nutrition education | 7 | 14% | |

| | | | |
|--|---|-----|----|
| Working with special groups (e.g., disabled, elderly, ethnic minorities, orphans) | 6 | 12% | |
| Working with NGO(s) | 6 | 12% | |
| Literacy | 4 | 8% | |
| Microenterprise development | 4 | 8% | |
| Urban development/municipal development | 4 | 8% | |
| Biodiversity conservation | 3 | 6% | |
| Child survival | 3 | 6% | |
| Mobilize host country nationals (HCNs) to volunteer | 3 | 6% | |
| Community food security (production/marketing) | 1 | 2% | |
| Household food security | 1 | 2% | |
| Total | | | 51 |

Percents may total to more than 100% since Volunteers were asked to "Mark all that apply."

C5: Which of the following do your secondary activities include? Other (specify)

| | Column N % | Count | Row N % |
|--|------------|-------|---------|
| C5.OTHER.TEXT | | | |
| Open-ended results. Not responsive to request. | | | |
| Total | | 58 | 100% |

C5: No Secondary Activities

| | | Percent | Number |
|---------|-------|---------|--------|
| C5.NONE | No | 91% | 53 |
| | Yes | 9% | 5 |
| | Total | 100% | 58 |

C6: Hours Spent on Secondary Activities During Average Work Week

| | None | 1-10 hrs | 11-20 hrs | 21-30 hrs | 31-40 hrs | More than 40 hrs | Total |
|-----------|------|----------|-----------|-----------|-----------|------------------|-------|
| C6Hrs6grp | | 69% | 21% | 8% | 2% | | 52 |

C6. How many hours do you spend on secondary activities during an average work week?

| | All Volunteers | Average | Lowest reported | Highest reported | Did not answer |
|----|----------------|---------|-----------------|------------------|----------------|
| C6 | 58 | 10.5 | 1 | 40 | 6 |

C7: How personally satisfying is your--?

| | Not at all 1 | 2 | 3 | 4 | Exceptionally 5 | Total |
|------------------------------|--------------|-----|-----|-----|-----------------|-------|
| Primary assignment | 2% | 19% | 28% | 29% | 22% | 58 |
| Secondary project/activities | 2% | 5% | 27% | 38% | 29% | 56 |

D. Training for Peace Corps Assignment

This section reports Volunteers' assessments of the effectiveness of their Pre-Service Training and In-Service Training at post. In-Service Training (IST) includes: Reconnect; Technical IST; Mid-Service and Close of Service conferences; project management/leadership conferences; and other post-sponsored training sessions.

D1: (PCVs at post 18 months or less) How effective was your Pre-Service Training (PST) in preparing you to--

| | Not effective | Poor | Adequate | Effective | Very Effective | NA/No training | Total |
|---|---------------|------|----------|-----------|----------------|----------------|-------|
| Manage cultural differences | | 4% | | 42% | 54% | | 26 |
| Deal with adjustment issues | | 4% | 27% | 35% | 35% | | 26 |
| Work with counterparts/community partners | | 19% | 38% | 27% | 15% | | 26 |
| Use language needed in work and social interactions | | | 15% | 31% | 54% | | 26 |
| Perform technical aspects of your work | | 27% | 42% | 19% | 12% | | 26 |
| Work on your project goals and objectives | | 19% | 27% | 46% | 8% | | 26 |
| Conduct a participatory community needs assessment (e.g., PACA) | | 15% | 35% | 23% | 27% | | 26 |
| Monitor your project goals and outcomes | | 8% | 46% | 38% | 8% | | 26 |
| Maintain your physical health | | | 27% | 35% | 35% | 4% | 26 |
| Maintain your mental/emotional health | | | 23% | 31% | 42% | 4% | 26 |
| Maintain your personal safety and security | | | 15% | 31% | 50% | 4% | 26 |

D5: How effective was your In-Service Training (IST) in preparing you to--

| | Not effective | Poor | Adequate | Effective | Very Effective | NA/No training | Total |
|---|---------------|------|----------|-----------|----------------|----------------|-------|
| Manage cultural differences | 4% | 5% | 38% | 33% | 18% | 2% | 55 |
| Deal with adjustment issues | 4% | 5% | 33% | 38% | 16% | 4% | 55 |
| Build and strengthen working relationships with counterparts/community partners | | 16% | 24% | 45% | 9% | 5% | 55 |
| Use language needed in work and social interactions | 4% | 9% | 19% | 22% | 24% | 22% | 54 |
| Perform technical aspects of your work | 2% | 13% | 28% | 42% | 11% | 4% | 53 |
| Work on your project goals and objectives | 2% | 8% | 32% | 42% | 11% | 6% | 53 |
| Conduct a participatory community needs assessment (e.g.,PACA) | 6% | 11% | 35% | 30% | 4% | 15% | 54 |
| Monitor project goals and outcomes | | 11% | 39% | 33% | 7% | 9% | 54 |
| Maintain your physical health | | 2% | 32% | 30% | 30% | 6% | 53 |
| Maintain your mental/emotional health | | 2% | 28% | 36% | 28% | 6% | 53 |
| Maintain your personal safety and security | 2% | 4% | 35% | 31% | 26% | 2% | 54 |

D8: Did you have this skill before joining the Peace Corps?

| | No/ No answer | Yes | Total |
|---|---------------|-----|-------|
| Skills specific to my assignment | 14 | 43 | 57 |
| Assessing community needs | 45 | 12 | 57 |
| Organizing/implementing community activities | 32 | 24 | 56 |
| Building capacity of local organizations | 40 | 17 | 57 |
| Monitoring, reporting, and evaluating my work | 11 | 46 | 57 |
| Designing and implementing training sessions | 32 | 24 | 56 |

D8: Is the skill needed for your Peace Corps work?

| | No/ No answer | Yes | Total |
|---|---------------|-----|-------|
| Skills specific to my assignment | 0 | 47 | 47 |
| Assessing community needs | 3 | 52 | 55 |
| Organizing/implementing community activities | 4 | 51 | 55 |
| Building capacity of local organizations | 5 | 51 | 56 |
| Monitoring, reporting, and evaluating my work | 1 | 54 | 55 |
| Designing and implementing training sessions | 5 | 51 | 56 |

D8: Have you had adequate Peace Corps training to acquire the skill?

| | No/ No answer | Yes | Total |
|---|---------------|-----|-------|
| Skills specific to my assignment | 8 | 37 | 45 |
| Assessing community needs | 8 | 45 | 53 |
| Organizing/implementing community activities | 8 | 43 | 51 |
| Building capacity of local organizations | 13 | 37 | 50 |
| Monitoring, reporting, and evaluating my work | 9 | 36 | 45 |
| Designing and implementing training sessions | 9 | 39 | 48 |

E. Volunteer Assignment Goals and Impact

This section reports Volunteers' self-assessments of their impact on the individuals and organizations in the communities in which they serve. At the end of this section, Volunteers' third goal activities, participation in Coverdell World Wise School/Correspondence Match (CWWS/CM) and use of Peace Corps resources to support their work are reported in questions.

E1: To what extent does your Volunteer work assignment address the following?

| | Not at all 1 | 2 | 3 | 4 | Exceptionally 5 | NA | Total |
|--|--------------|-----|-----|-----|-----------------|----|-------|
| Meets the objectives of the project plan | | 2% | 21% | 46% | 27% | 4% | 56 |
| Builds local capacity for sustainability | | 7% | 18% | 49% | 26% | | 57 |
| Involves local people in planning and implementing activities | | 9% | 28% | 37% | 26% | | 57 |
| Complements other local development activities | 2% | 7% | 26% | 39% | 23% | 4% | 57 |
| Transfers skills to host country individuals and organizations | | 4% | 23% | 46% | 28% | | 57 |
| Mobilizes host country nationals (HCNs) to volunteer | 23% | 19% | 23% | 14% | 12% | 9% | 57 |
| Helps promote a better understanding of Americans on the part of the peoples served (goal 2) | 2% | 7% | 18% | 21% | 52% | | 56 |
| Helps promote a better understanding of other peoples on the part of Americans (goal 3) | 2% | 9% | 14% | 23% | 53% | | 57 |

E2: To what extent does your host community--?

| | Not at all 1 | 2 | 3 | 4 | Exceptionally 5 | NA | Total |
|---------------------------------------|--------------|-----|-----|-----|-----------------|----|-------|
| Need the assistance that you provided | | 19% | 19% | 38% | 25% | | 32 |
| Want the assistance that you provided | | 6% | 22% | 53% | 19% | | 32 |

E3: How much impact does your assignment have on the capacities of your host counterparts/community partners?

| | None 1 | 2 | 3 | 4 | Exceptional 5 | NA | Total |
|---|--------|-----|-----|-----|---------------|-----|-------|
| Ability to access information (e.g., library, Internet, etc.) | 5% | 31% | 16% | 28% | 17% | 3% | 58 |
| Leadership skills | 2% | 14% | 34% | 31% | 19% | | 58 |
| Planning and management | | 9% | 29% | 41% | 21% | | 58 |
| Problem solving/critical thinking | | 9% | 33% | 46% | 11% | 2% | 57 |
| Self-esteem | 2% | 9% | 33% | 33% | 21% | 2% | 57 |
| Technical skills | 2% | 10% | 19% | 50% | 19% | | 58 |
| Use of local resources | 7% | 19% | 34% | 22% | 17% | | 58 |
| Use of external resources (e.g., grants, international NGOs) | 9% | 14% | 26% | 29% | 21% | 2% | 58 |
| Better understanding of Americans | 2% | 7% | 14% | 31% | 47% | | 58 |
| Other: Please specify below | 12% | | 6% | 6% | 6% | 69% | 16 |

E3: How much impact does your assignment have on the capacities of your host counterparts/community partners? Other (specify)

| | Column N % | Count | Row N % |
|--|------------|-------|---------|
| E3_OTHER Open-ended results. Not responsive to request. | | | |
| Total | | 58 | 100% |

E4: How much impact does your assignment have on the capacities of your host individuals with whom you work?

| | None 1 | 2 | 3 | 4 | Exceptional 5 | NA | Total |
|---|--------|-----|-----|-----|---------------|-----|-------|
| Ability to access information (e.g., library, Internet, etc.) | 9% | 19% | 33% | 23% | 12% | 4% | 57 |
| Leadership skills | 4% | 14% | 39% | 25% | 18% | 2% | 57 |
| Planning and management | 4% | 13% | 40% | 31% | 13% | | 55 |
| Problem solving/critical thinking | | 12% | 44% | 33% | 11% | | 57 |
| Self-esteem | | 11% | 36% | 30% | 23% | | 56 |
| Technical skills | 2% | 18% | 37% | 26% | 18% | | 57 |
| Use of local resources | 7% | 19% | 33% | 23% | 14% | 4% | 57 |
| Use of external resources (e.g., grants, international NGOs) | 12% | 16% | 32% | 23% | 12% | 5% | 57 |
| Better understanding of Americans | 2% | 5% | 14% | 32% | 47% | | 57 |
| Other: Please specify below | 6% | | 18% | 6% | 12% | 59% | 17 |

E4: How much impact does your assignment have on the capacities of your host individuals with whom you work? Other (specify)

| | Column N % | Count | Row N % |
|----------|--|-------|---------|
| E4_OTHER | Open-ended results. Not responsive to request. | | |
| Total | | 58 | 100% |

E5: To what extent does your assignment enhance the capacities of organizations with whom you work?

| | None 1 | 2 | 3 | 4 | Exceptional 5 | NA | Total |
|---|--------|-----|-----|-----|---------------|-----|-------|
| Identifying and prioritizing organizational needs | 4% | 9% | 22% | 42% | 18% | 5% | 55 |
| Leadership | 5% | 12% | 23% | 45% | 9% | 5% | 56 |
| Management | 4% | 12% | 21% | 43% | 14% | 5% | 56 |
| Monitoring and evaluation | 2% | 12% | 32% | 27% | 21% | 5% | 56 |
| Planning and implementing organizational activities | 4% | 14% | 25% | 32% | 20% | 5% | 56 |
| Teamwork/participatory decision-making | 5% | 12% | 25% | 32% | 20% | 5% | 56 |
| Use of local resources | 11% | 9% | 32% | 21% | 20% | 7% | 56 |
| Ability to mobilize, manage, and sustain local volunteers | 11% | 27% | 23% | 12% | 14% | 12% | 56 |
| Other: Please specify below | 6% | | 12% | 6% | 6% | 69% | 16 |

E5: To what extent does your assignment enhance the capacities of organizations with whom you work? Other (specify)

| | Column N % | Count | Row N % |
|----------|------------|-------|---------|
| E5_OTHER | 100% | 58 | |
| Total | | 58 | 100% |

E6: How effective have you been in transferring knowledge and skills to help the following persons or groups build their capacities?

| | Not at all 1 | 2 | 3 | 4 | Exceptionally 5 | NA | Total |
|------------------------------------|--------------|-----|-----|-----|-----------------|-----|-------|
| Your counterpart/community partner | 2% | 16% | 23% | 37% | 19% | 4% | 57 |
| Another institution/organization | | 18% | 28% | 35% | 12% | 7% | 57 |
| Members of your host community | | 12% | 26% | 46% | 14% | 2% | 57 |
| Other: Please specify below | | | | 8% | | 92% | 12 |

E7: To what extent have HC individuals gained a better understanding of Americans? Includes "Too early to tell."

| | Not at all | Minimally | Moderately | Considerably | Exceptionally | Too early to tell | Total |
|----|------------|-----------|------------|--------------|---------------|-------------------|-------|
| E7 | 0% | 0% | 16% | 52% | 31% | 2% | 58 |

E7: To what extent have HC individuals gained a better understanding of Americans? Excludes "Too early to tell."

| | Not at all | Minimally | Moderately | Considerably | Exceptionally | Total |
|----|------------|-----------|------------|--------------|---------------|-------|
| E7 | | | 16% | 53% | 32% | 57 |

E9. In which of the following third goal activities have you participated during your PC service?

| | PCV Responses | % Doing This | Total PCVs Responding |
|---|---------------|--------------|-----------------------|
| \$E9Goal3Acts Electronic updates | 48 | 84% | 57 |
| Hosting American visitors | 42 | 74% | |
| Hard copy/paper update | 39 | 68% | |
| Enrollment in the CWWS/CMS program | 31 | 54% | |
| Personal website or blog | 30 | 53% | |
| Pen pal program/letter exchange | 18 | 32% | |
| While on home leave, spoke at a school or community group | 12 | 21% | |
| Podcasted/created a slide show or video posted online | 9 | 16% | |
| Peace Corps Week activities | 2 | 4% | |
| Other please specify | 2 | 4% | |
| Total | | | |

E9: When asked about third goal activities, Volunteer answered "No involvement in third goal activities."

| | Have done third goal activities | No third goal activities | Total |
|---|---------------------------------|--------------------------|-------|
| Peace Corps' third goal is to "help promote a better understanding of other peoples on the part of Americans." In which of the following third goal activities, including your contact with family and friends, have you participated during your Peace Corps | 98% | 2% | 58 |

E10: Would you recommend participation in the CWWS CMS to other Volunteers?

| | I have not participated in CWWS/CM. | I have participated in CWWS/CM & would recommend it | I have participated in CWWS/CM and would NOT recommend it | Total |
|-----|-------------------------------------|---|---|-------|
| E10 | 46% | 48% | 5% | 56 |

E11: To what extent have Americans gained a better understanding of HCNs? Includes "Too early to tell."

| | Not at all | Minimally | Moderately | Considerably | Exceptionally | Too early to tell | Total |
|-----|------------|-----------|------------|--------------|---------------|-------------------|-------|
| E11 | 0% | 2% | 24% | 38% | 34% | 2% | 58 |

E11: To what extent have Americans gained a better understanding of HCNs? Excludes "Too early to tell."

| | Not at all | Minimally | Moderately | Considerably | Exceptionally | Total |
|-----|------------|-----------|------------|--------------|---------------|-------|
| E11 | | 2% | 25% | 39% | 35% | 57 |

E12: Which of the following resources have been useful to you in your third goal activities?

| | |
|--|-----|
| | Yes |
|--|-----|

| | |
|--|----|
| Coverdell World Wise Schools staff (Useful) | 15 |
| Contact with other Peace Corps staff in Washington, D.C. (Useful) | 6 |
| Information at staging (Useful) | 24 |
| Information from your post sent to you before departure (Useful) | 29 |
| Internet (Useful) | 46 |
| Invitation kits (Useful) | 30 |
| Material in staging packet (Useful) | 25 |
| Peace Corps staff at post (e.g., World Wise School contact) (Useful) | 20 |
| Recruiting (Useful) | 16 |
| Resources available from Coverdell World Wise Schools (Useful) | 13 |
| Resources available on Peace Corps website (e.g., third goal section) (Useful) | 19 |
| Training on third goal (Useful) | 17 |
| Other: Please specify below (Useful) | 2 |

E12: Which of the following resources would/will be helpful to you in your third goal activities?

| | Yes |
|--|-----|
| Coverdell World Wise Schools staff (Would be helpful) | 15 |
| Contact with other Peace Corps staff in Washington, D.C. (Would be helpful) | 17 |
| Information at staging (Would be helpful) | 7 |
| Information from your post sent to you before departure (Would be helpful) | 14 |
| Internet (Would be helpful) | 11 |
| Invitation kits (Would be helpful) | 5 |
| Material in staging packet (Would be helpful) | 6 |
| Peace Corps staff at post (e.g., World Wise School contact) (Would be helpful) | 11 |
| Recruiting (Would be helpful) | 7 |
| Resources available from Coverdell World Wise Schools(Would be helpful) | 14 |
| Resources available on Peace Corps website (e.g., third goal section) (Would be helpful) | 9 |
| Training on third goal (Would be helpful) | 15 |
| Other: Please specify below (Would/will be helpful) | 2 |

E12: Other useful/helpful resources? Other (specify)

| | Column N % | Count | Row N % |
|-----------|--|-------|---------|
| E12_OTHER | Open-ended results. Not responsive to request. | | |
| Total | | 58 | 100% |

E13: Do you know about the Peace Corps Partnership Program (PCPP)?

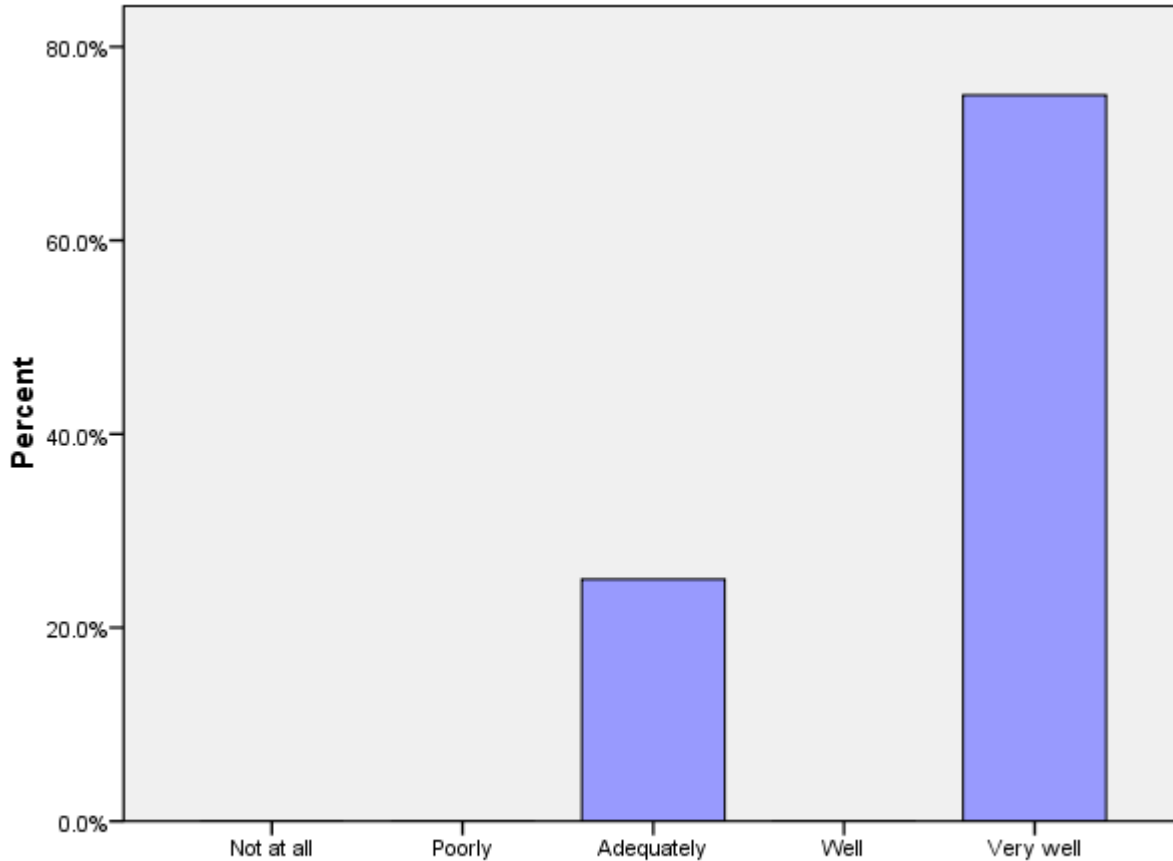
| | No | Yes, but I haven't used it. | Yes, I have used it. | Total |
|-----|-----|-----------------------------|----------------------|-------|
| E13 | 16% | 68% | 16% | 57 |

F. Peace Corps Support

This section reports Volunteers' assessments of in-country Peace Corps.

F1 (PCVs at post 9+ months): How prepared for your arrival were the host people with whom you work?

| | Not at all | Poorly | Adequately | Well | Very well | Total |
|----|------------|--------|------------|------|-----------|-------|
| F1 | | | 25% | | 75% | 4 |



F1: When you arrived at your community, how prepared for your arrival were the host people with whom you work?

F2: How satisfied are you with the health care you received from your PCMO(s)?

| | Not at all | Minimally | Adequately | Considerably | Exceptionally | Not Used | Total |
|----|------------|-----------|------------|--------------|---------------|----------|-------|
| F2 | | | 4% | 19% | 78% | | 54 |

F3: How satisfied are you with the following support provided by in-country PC staff?

| | Not at all 1 | 2 | 3 | 4 | Completely 5 | NA | Total |
|-----------------------------|--------------|-----|-----|-----|--------------|-----|-------|
| Administrative/logistical | | 9% | 38% | 38% | 16% | | 58 |
| Cross-cultural | | | 12% | 48% | 40% | | 58 |
| Emotional | | 7% | 21% | 39% | 33% | | 57 |
| Feedback on my work reports | 19% | 17% | 19% | 21% | 14% | 10% | 58 |
| Job assignment | 3% | 21% | 31% | 29% | 16% | | 58 |
| Language learning | | 2% | 14% | 22% | 62% | | 58 |
| Medical | | 2% | 3% | 31% | 64% | | 58 |
| Safety and security | 2% | 2% | 19% | 31% | 47% | | 58 |
| Site selection/preparation | 3% | 31% | 29% | 22% | 14% | | 58 |
| Technical skills | 2% | 21% | 36% | 29% | 12% | | 58 |

F4: How satisfied are you with the PC time and resources allocated to mental health/adjustment issues?

| | Not at all satisfied 1 | 2 | 3 | 4 | Completely satisfied 5 | Total |
|----|------------------------|----|-----|-----|------------------------|-------|
| F4 | 2% | 9% | 14% | 33% | 43% | 58 |

F5: What level of PC support have you received to help cope with stress from issues such as HIV/AIDS, food insecurity, etc. in your community? (Including PCVs w/no need for support)

| | No support | Minimal support | Adequate support | Considerable support | Exceptional support | NA / I have no need for support | Total |
|----|------------|-----------------|------------------|----------------------|---------------------|---------------------------------|-------|
| F5 | | 9% | 17% | 12% | 21% | 41% | 58 |

F5: What level of PC support have you received to help cope with stress from issues such as HIV/AIDS, food insecurity, etc. in your community? (Excluding PCVs w/no need for support)

| | No support | Minimal support | Adequate support | Considerable support | Exceptional support | Total |
|----|------------|-----------------|------------------|----------------------|---------------------|-------|
| F5 | 0% | 15% | 29% | 21% | 35% | 34 |

F6: How would you rate your interaction with the Country Director in terms of the following?

| | Not adequate | Adequate | Total |
|------------------------------------|--------------|----------|-------|
| Responsiveness to my issues | 25% | 75% | 55 |
| Informative content | 32% | 68% | 53 |
| My comfort level discussing issues | 36% | 64% | 55 |
| Adequacy of visits | 46% | 54% | 54 |

F6: How would you rate your interaction with the PTO/SRPTC in terms of the following?

| | Not adequate | Adequate | Total |
|------------------------------------|--------------|----------|-------|
| Responsiveness to my issues | 2% | 98% | 55 |
| Informative content | 9% | 91% | 54 |
| My comfort level discussing issues | 13% | 87% | 55 |
| Adequacy of visits | 26% | 74% | 54 |

F6: How would you rate your interaction with the APCD/Program Manager in terms of the following?

| | Not adequate | Adequate | Total |
|------------------------------------|--------------|----------|-------|
| Responsiveness to my issues | 22% | 78% | 54 |
| Informative content | 40% | 60% | 53 |
| My comfort level discussing issues | 9% | 91% | 54 |
| Adequacy of visits | 26% | 74% | 54 |

F6: How would you rate your interaction with the PCMO in terms of the following?

| | Not adequate | Adequate | Total |
|------------------------------------|--------------|----------|-------|
| Responsiveness to my issues | 2% | 98% | 56 |
| Informative content | 0% | 100% | 55 |
| My comfort level discussing issues | 2% | 98% | 56 |
| Adequacy of visits | 7% | 93% | 54 |

F6: How would you rate your interaction with the Safety and Security Coordinator in terms of the following?

| | Not adequate | Adequate | Total |
|------------------------------------|--------------|----------|-------|
| Responsiveness to my issues | 9% | 91% | 56 |
| Informative content | 4% | 96% | 55 |
| My comfort level discussing issues | 7% | 93% | 57 |
| Adequacy of visits | 15% | 85% | 54 |

F6: How would you rate your interaction with the Training Manager in terms of the following?

| | Not adequate | Adequate | Total |
|------------------------------------|--------------|----------|-------|
| Responsiveness to my issues | 6% | 94% | 54 |
| Informative content | 7% | 93% | 54 |
| My comfort level discussing issues | 4% | 96% | 54 |
| Adequacy of visits | 10% | 90% | 52 |

F6: How would you rate your interaction with administrative staff in terms of the following?

| | Not adequate | Adequate | Total |
|------------------------------------|--------------|----------|-------|
| Responsiveness to my issues | 20% | 80% | 55 |
| Informative content | 15% | 85% | 55 |
| My comfort level discussing issues | 7% | 93% | 55 |
| Adequacy of visits | 16% | 84% | 50 |

F6: How would you rate your interaction with other post staff (please specify) in terms of the following?

| | Not adequate | Adequate | Total |
|------------------------------------|--------------|----------|-------|
| Responsiveness to my issues | 25% | 75% | 4 |
| Informative content | 0% | 100% | 2 |
| My comfort level discussing issues | 25% | 75% | 4 |
| Adequacy of visits | 40% | 60% | 5 |

F7: To what extent is your CD aware of Volunteer issues and concerns through interactions with Volunteers?

| | Not at all | Minimally | Adequately | Considerably | Completely | Total |
|----|------------|-----------|------------|--------------|------------|-------|
| F7 | 7% | 44% | 25% | 16% | 7% | 55 |

F8: What is the most effective way you use to communicate with PC staff?

| | | | |
|----------------|-----------------------|-----|----|
| Most effective | Cellphone (voice) | 51% | 29 |
| | In-person visits | 21% | 12 |
| | Other. Please specify | 9% | 5 |

| | | |
|------------------------------------|------|----|
| Text messaging | 7% | 4 |
| Telephone at residence or work | 5% | 3 |
| Email/ Internet | 4% | 2 |
| CB radio | 4% | 2 |
| Telephone not at residence or work | | |
| Letters | | |
| Total | 100% | 57 |

F8: What is the second most effective way you use to communicate with PC staff?

| | | | |
|-----------------------|------------------------------------|------|----|
| Second most effective | Cellphone (voice) | 23% | 13 |
| | Text messaging | 18% | 10 |
| | Telephone not at residence or work | 18% | 10 |
| | Telephone at residence or work | 12% | 7 |
| | Letters | 9% | 5 |
| | In-person visits | 9% | 5 |
| | Email/ Internet | 7% | 4 |
| | Other. Please specify | 2% | 1 |
| | CB radio | 2% | 1 |
| | Total | 100% | 56 |

F8: What is the third most effective way you use to communicate with PC staff?

| | | | |
|----------------------------------|--------------------------------|-----|----|
| (C11_THREE) Third most effective | In-person visits | 22% | 12 |
| | Email/ Internet | 20% | 11 |
| | Text messaging | 18% | 10 |
| | Other. Please specify | 11% | 6 |
| | Telephone at residence or work | 9% | 5 |
| | CB radio | 9% | 5 |
| | Cellphone (voice) | 5% | 3 |
| | Letters | 4% | 2 |

| | | |
|------------------------------------|------|----|
| Telephone not at residence or work | 2% | 1 |
| Total | 100% | 55 |

F9: How do you rate the effectiveness of your communication resources for contacting in-country PC staff?

| | Very poor | Poor | Adequate | Good | Excellent | Total |
|----|-----------|------|----------|------|-----------|-------|
| F9 | 2% | 4% | 26% | 40% | 28% | 57 |

G. Your Safety and Security

This section reports on how safe and informed about their safety Volunteers feel. Their experiences with reported and unreported crimes are summarized.

G1: How safe do you feel...?

| | Not at All Safe | Often Safe | Adequately Safe | Usually Safe | Very Safe | Total |
|---|-----------------|------------|-----------------|--------------|-----------|-------|
| Where you live | | 5% | 10% | 19% | 66% | 58 |
| Where you work | | | 5% | 19% | 76% | 58 |
| When you travel in-country | | 9% | 9% | 57% | 26% | 58 |
| City where main Peace Corps office is located | | 9% | 16% | 55% | 21% | 58 |

G2: Please indicate the number of times you experienced the following types of discrimination/harassment.

| | Never | Once | 2-5 times | 6-10 times | 11-25 times | 26+ times | Total |
|--------------------|--------|-------|-----------|------------|-------------|-----------|-------|
| Age | 85.7% | 2.4% | 7.1% | 4.8% | | | 42 |
| Anti-American | 90.2% | 7.3% | | | 2.4% | | 41 |
| Disability | 100.0% | | | | | | 41 |
| Gender | 66.7% | 2.6% | 7.7% | 5.1% | 15.4% | 2.6% | 39 |
| Racial/color | 90.0% | | 10.0% | | | | 40 |
| Religious | 95.2% | 2.4% | 2.4% | | | | 42 |
| Sexual (verbal) | 52.3% | 9.1% | 18.2% | 2.3% | 11.4% | 6.8% | 44 |
| Sexual (physical) | 69.0% | 21.4% | 7.1% | 2.4% | | | 42 |
| Sexual orientation | 97.5% | 2.5% | | | | | 40 |

G2: Please indicate the number of times you reported discrimination/harassment events to PC.

| | Never | Once | 2-5 times | 6-10 times | 11-25 times | 26+ times | Total |
|--------------------|--------|-------|-----------|------------|-------------|-----------|-------|
| Age | 83.3% | | 16.7% | | | | 6 |
| Anti-American | 100.0% | | | | | | 4 |
| Gender | 93.3% | | 6.7% | | | | 15 |
| Racial/color | 100.0% | | | | | | 4 |
| Religious | 50.0% | 50.0% | | | | | 2 |
| Sexual (verbal) | 42.1% | 26.3% | 31.6% | | | | 19 |
| Sexual (physical) | 50.0% | 35.7% | 14.3% | | | | 14 |
| Sexual orientation | 100.0% | | | | | | 1 |

G3: Please indicate the number of times you experienced the following types of crimes.

| | Never | Once | 2-5 times | 6-10 times | 11-25 times | 26+ times | Total |
|--------------------|--------|-------|-----------|------------|-------------|-----------|-------|
| Burglary | 70.2% | 17.0% | 12.8% | | | | 47 |
| Theft | 58.1% | 27.9% | 14.0% | | | | 43 |
| Robbery | 97.6% | 2.4% | | | | | 42 |
| Physical assault | 90.7% | 9.3% | | | | | 43 |
| Aggravated assault | 100.0% | | | | | | 41 |
| Sexual assault | 76.1% | 21.7% | 2.2% | | | | 46 |
| Rape | 100.0% | | | | | | 40 |

G3: Please indicate the number of times you reported the following crimes to Peace Corps.

| | Never | Once | 2-5 times | 6-10 times | 11-25 times | 26+ times | Total |
|------------------|-------|--------|-----------|------------|-------------|-----------|-------|
| Burglary | 27.3% | 45.5% | 27.3% | | | | 11 |
| Theft | 52.9% | 41.2% | 5.9% | | | | 17 |
| Robbery | | 100.0% | | | | | 1 |
| Physical assault | 25.0% | 75.0% | | | | | 4 |
| Sexual assault | 50.0% | 50.0% | | | | | 8 |

G4: If you did not report your experience with burglary, please your reason(s) for not reporting.

| | | PCV Responses | % Reason Not Rptd | Total PCVs Responding |
|------------|--|---------------|-------------------|-----------------------|
| \$NoRpBurg | I felt it was too minor or common to report | 2 | 50% | |
| | Other | 2 | 50% | |
| | I did not think the PC could help | 1 | 25% | |
| | I believed it could result in changing sites | | | |
| | Concerns of a possible breach in confidentiality | | | |
| | Reporting might result in disciplinary action against me | | | |
| | It might hurt my relationship with the community | | | |
| | Total | | | |

*Percents may total to more than 100% since Volunteers were asked to "mark all that apply."

G4: If you did not report your experience with theft, please your reason(s) for not reporting.

| | | PCV Responses | % Reason Not Rptd | Total PCVs Responding |
|-------------|--|---------------|-------------------|-----------------------|
| \$NoRpTheft | I felt it was too minor or common to report | 10 | 91% | |
| | I did not think the PC could help | 3 | 27% | |
| | Other | 3 | 27% | |
| | It might hurt my relationship with the community | 1 | 9% | |
| | I believed it could result in changing sites | | | |
| | Concerns of a possible breach in confidentiality | | | |
| | Reporting might result in disciplinary action against me | | | |
| | Total | | | |

*Percents may total to more than 100% since Volunteers were asked to "mark all that apply."

G4: If you did not report your experience with robbery, please your reason(s) for not reporting.

| | PCV Responses | % Reason Not Rptd | Total PCVs Responding |
|--|---------------|-------------------|-----------------------|
| \$NoRpRobb | | | |
| Other | 1 | 100% | |
| I did not think the PC could help | | | |
| I believed it could result in changing sites | | | |
| I felt it was too minor or common to report | | | |
| Concerns of a possible breach in confidentiality | | | |
| Reporting might result in disciplinary action against me | | | |
| It might hurt my relationship with the community | | | |
| Total | | | 1 |

*Percents may total to more than 100% since Volunteers were asked to "mark all that apply."

G4: If you did not report your experience with physical assault, please your reason(s) for not reporting.

| | PCV Responses | % Reason Not Rptd | Total PCVs Responding |
|--|---------------|-------------------|-----------------------|
| \$NoRpPhAs | | | |
| I felt it was too minor or common to report | 1 | 50% | |
| Other | 1 | 50% | |
| I did not think the PC could help | | | |
| I believed it could result in changing sites | | | |
| Concerns of a possible breach in confidentiality | | | |
| Reporting might result in disciplinary action against me | | | |
| It might hurt my relationship with the community | | | |
| Total | | | 2 |

*Percents may total to more than 100% since Volunteers were asked to "mark all that apply."

G4: If you did not report your experience with aggravated assault, please your reason(s) for not reporting.

| | PCV Responses | % Reason Not Rptd | Total PCVs Responding |
|--|---------------|-------------------|-----------------------|
| \$NoRpAgAs Other | 1 | 100% | |
| I did not think the PC could help | | | |
| I believed it could result in changing sites | | | |
| I felt it was too minor or common to report | | | |
| Concerns of a possible breach in confidentiality | | | |
| Reporting might result in disciplinary action against me | | | |
| It might hurt my relationship with the community | | | |
| Total | | | 1 |

*Percents may total to more than 100% since Volunteers were asked to "mark all that apply."

G4: If you did not report your experience with sexual assault, please your reason(s) for not reporting.

| | | PCV Responses | % Reason Not Rptd | Total PCVs Responding |
|------------|--|---------------|-------------------|-----------------------|
| \$NoRpSxAs | I felt it was too minor or common to report | 3 | 75% | |
| | Other | 1 | 25% | |
| | I did not think the PC could help | | | |
| | I believed it could result in changing sites | | | |
| | Concerns of a possible breach in confidentiality | | | |
| | Reporting might result in disciplinary action against me | | | |
| | It might hurt my relationship with the community | | | |
| | Total | | | |

*Percents may total to more than 100% since Volunteers were asked to "mark all that apply."

G4: If you did not report your experience with rape, please your reason(s) for not reporting.

| | PCV Responses | % Reason Not Rptd | Total PCVs Responding |
|--|---------------|-------------------|-----------------------|
| \$NoRpRape Other | 1 | 100% | |
| I did not think the PC could help | | | |
| I believed it could result in changing sites | | | |
| I felt it was too minor or common to report | | | |
| Concerns of a possible breach in confidentiality | | | |
| Reporting might result in disciplinary action against me | | | |
| It might hurt my relationship with the community | | | |
| Total | | | 1 |

*Percents may total to more than 100% since Volunteers were asked to "mark all that apply."

H. Volunteers working in HIV/AIDS

This section reports Volunteers' involvement in HIV/AIDS and their perceived effectiveness of their HIV/AIDS related activities.

H1: Which of the following best describes your involvement in HIV/AIDS activities?

| | HIV/AIDS work is my primary assignment. | HIV/AIDS work is part of my secondary activities. | Involved in HIV/AIDS efforts, not primary/secondary work | Not involved in any HIV/AIDS related activities | Total |
|----|---|---|--|---|-------|
| H1 | | 25% | 29% | 46% | 56 |

H2: How well has PC training prepared you to undertake your HIV/AIDS activities?

| | Not at all | Poorly | Adequately | Well | Very well | NA | Total |
|----|------------|--------|------------|------|-----------|----|-------|
| H2 | 3% | 17% | 57% | 10% | 7% | 7% | 30 |

H3: In working with HC individuals or groups, how would you rate the effectiveness of your specific HIV/AIDS activities? (Including the "Don't Know" responses)

| | Seldom effective | Sometimes effective | Often effective | Almost always effective | Don't know | Total |
|----|------------------|---------------------|-----------------|-------------------------|------------|-------|
| H3 | 3% | 23% | 37% | 13% | 23% | 30 |

H3: In working with HC individuals or groups, how would you rate the effectiveness of your specific HIV/AIDS activities? (Excluding the "Don't Know" responses)

| | Seldom effective | Sometimes effective | Often effective | Almost always effective | Total |
|----|------------------|---------------------|-----------------|-------------------------|-------|
| H3 | 4% | 30% | 48% | 17% | 23 |

I. Your Life in the Peace Corps

This section reports on Volunteers' descriptions of and adjustments to their living conditions, including stress factors and how Volunteers cope with stress.

I1: Have you lived with a host country individual or family?

| | No, I have never lived with a host country individual or family | Yes, I lived with a host country individual or family only | Yes, in my community (not during PST). | Yes, both during PST and later in my community. | Total |
|----|---|--|--|---|-------|
| I1 | 2% | 39% | 4% | 56% | 57 |

I2: How often do you interact with HCNs in community/family social events?

| | Daily | Several times a week | Weekly | Several times a month | Monthly | Less than once a month | Total |
|----|-------|----------------------|--------|-----------------------|---------|------------------------|-------|
| I2 | 68% | 16% | 9% | 4% | | 4% | 57 |

I3: How well can you communicate in the language used by most people in your community?

| | Not at all | Poorly | Adequately | Well | Very well | Total |
|----|------------|--------|------------|------|-----------|-------|
| I3 | 4% | 12% | 21% | 16% | 47% | 57 |

I4: Do you have the following at your worksite?

| | Never | Sometimes or more often | Total |
|---------------|-------|-------------------------|-------|
| Electricity | 45% | 55% | 56 |
| Running water | 43% | 57% | 56 |

I4: Do you have the following at your residence?

| | Never | Sometimes or more often | Total |
|---------------|-------|-------------------------|-------|
| Electricity | 48% | 52% | 54 |
| Running water | 46% | 54% | 56 |

I5: How well do your PC experiences match the expectations you had before you became a Volunteer?

| | Not at all | Minimally | Moderately | Considerably | Exceptionally | Total |
|----|------------|-----------|------------|--------------|---------------|-------|
| I5 | 2% | 11% | 32% | 37% | 19% | 57 |

I7: To what extent do the following create stress and/or emotional health issues for you?

| | Not at all stressful 1 | 2 | 3 | 4 | Exceptionally stressful 5 | NA | Total |
|---|------------------------|-----|-----|-----|---------------------------|-----|-------|
| Cultural issues | 15% | 27% | 27% | 29% | 2% | | 55 |
| Dealing with violence in country (e.g., civil unrest, domestic violence, corporal punishment) | 38% | 22% | 16% | 15% | 5% | 4% | 55 |
| Health/medical problems | 31% | 31% | 24% | 9% | 5% | | 55 |
| Issues including family, friends, loved ones in U.S. | 9% | 29% | 31% | 24% | 7% | | 55 |
| Isolation/loneliness | 7% | 25% | 27% | 31% | 9% | | 55 |
| Local language | 30% | 26% | 22% | 17% | 6% | | 54 |
| Primary assignment | 15% | 24% | 36% | 20% | 5% | | 55 |
| Romantic relationships in-country | 36% | 15% | 15% | 9% | 5% | 20% | 55 |
| Interactions with other Volunteers | 47% | 31% | 15% | 7% | | | 55 |
| Interactions with PC Staff | 44% | 35% | 9% | 11% | 2% | | 55 |
| Safety and security | 33% | 42% | 13% | 5% | 5% | 2% | 55 |
| Other: Please specify below | | | | 44% | 22% | 33% | 9 |

I8: Please mark all of the typical ways in which you cope with stress.

| | PCV Responses | % Using This Stress Reducer | Total PCVs Responding |
|--|---------------|-----------------------------|-----------------------|
| Pursue personal hobbies | 48 | 87% | 55 |
| Talk with friends and family in US | 43 | 78% | |
| Talk with PCVs outside my community | 42 | 76% | |
| Do sports | 40 | 73% | |
| Leave the community for a time | 36 | 65% | |
| Get involved in other projects | 35 | 64% | |
| Talk with my host family | 31 | 56% | |
| Talk with co-workers or friends (not PCVs) | 29 | 53% | |
| Talk with PC in-country staff | 23 | 42% | |
| Talk with PCVs in my community | 20 | 36% | |
| Pray | 20 | 36% | |
| Meditate | 19 | 35% | |
| Do other activity (specify) | 8 | 15% | |
| Talk with Office of Special Services staff | | | |
| Total | | | |

*Percents total to more than 100% since Volunteers were asked to "mark all that apply."

18: Others I talk with to reduce stress

| | Percent | Number |
|----------------|--|--------|
| I8.OTHRST.TEXT | Open-ended results. Not responsive to request. | |
| Total | 100% | 58 |

18: Other activities to reduce stress

| | Percent | Number |
|------------------|--|--------|
| I8.OTHRACT.TEXT2 | Open-ended results. Not responsive to request. | |
| Total | 100% | 58 |

**18: When asked about ways of coping with stress, Volunteers
who answered "No stress"**

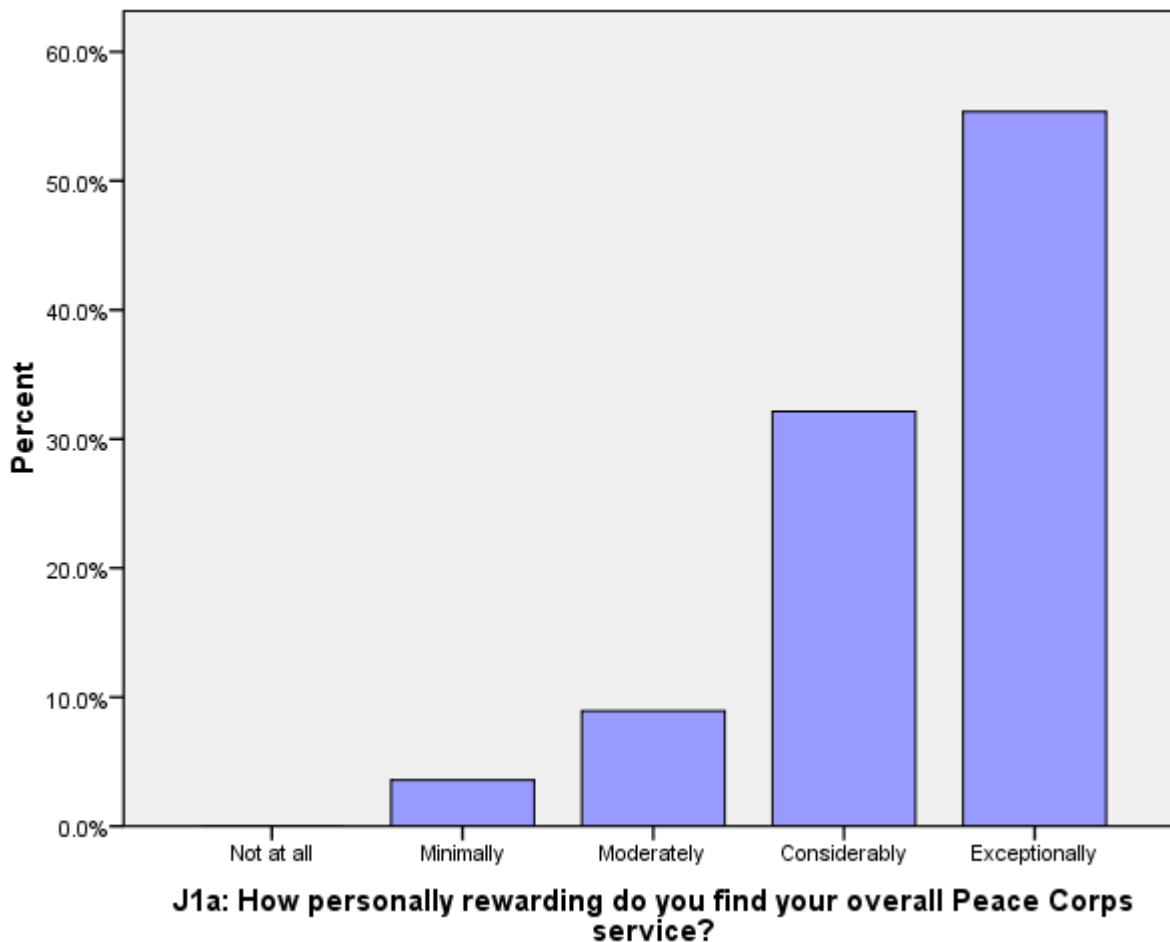
| | No | Yes, I have no stress | Total |
|-------------|-----|-----------------------|-------|
| 18.NOSTRESS | 98% | 2% | 58 |

J. Overall Assessment of Peace Corps Service

This section reports Volunteers' level of satisfaction with their Peace Corps service and their expectations about completing their service.

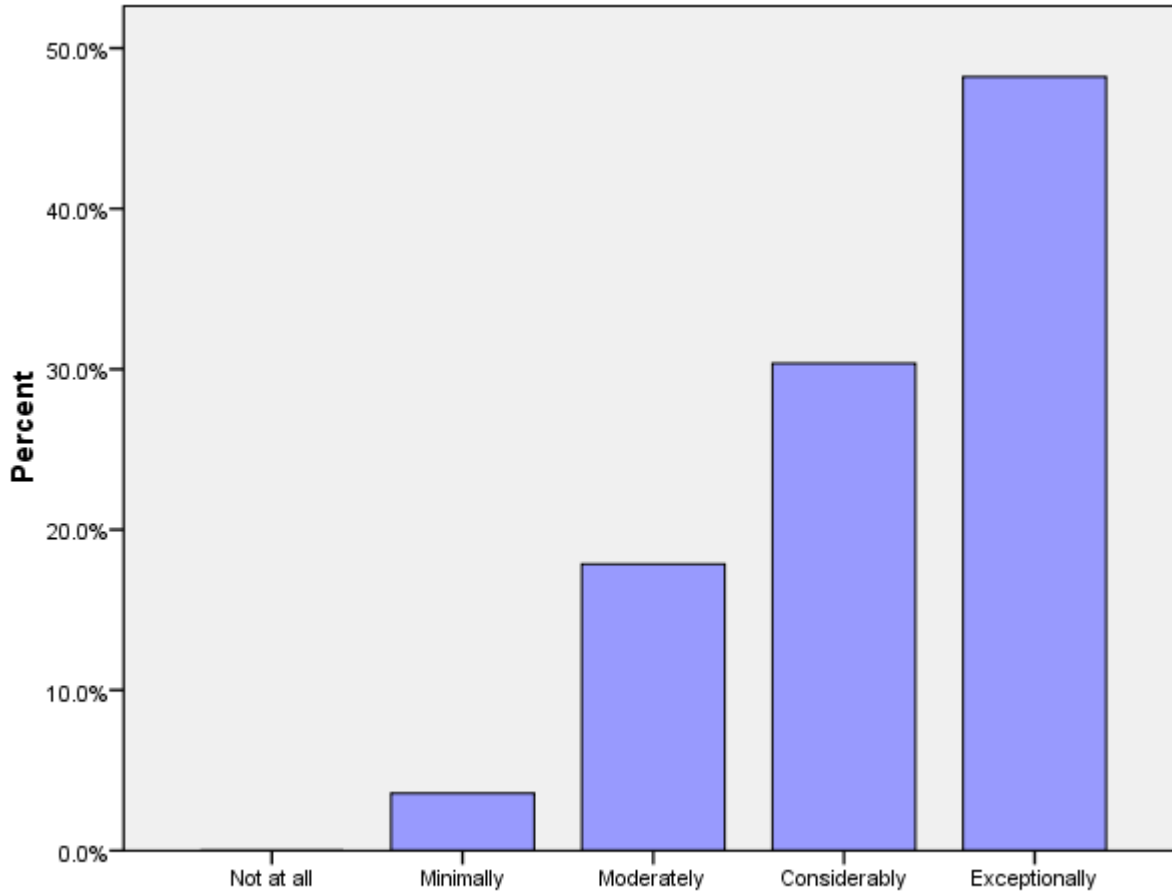
J1a: How personally rewarding do you find your overall Peace Corps service?

| | Not at all | Minimally | Moderately | Considerably | Exceptionally | Total |
|-----|------------|-----------|------------|--------------|---------------|-------|
| J1A | | 4% | 9% | 32% | 55% | 56 |



J1b: How personally rewarding do you find your community involvement?

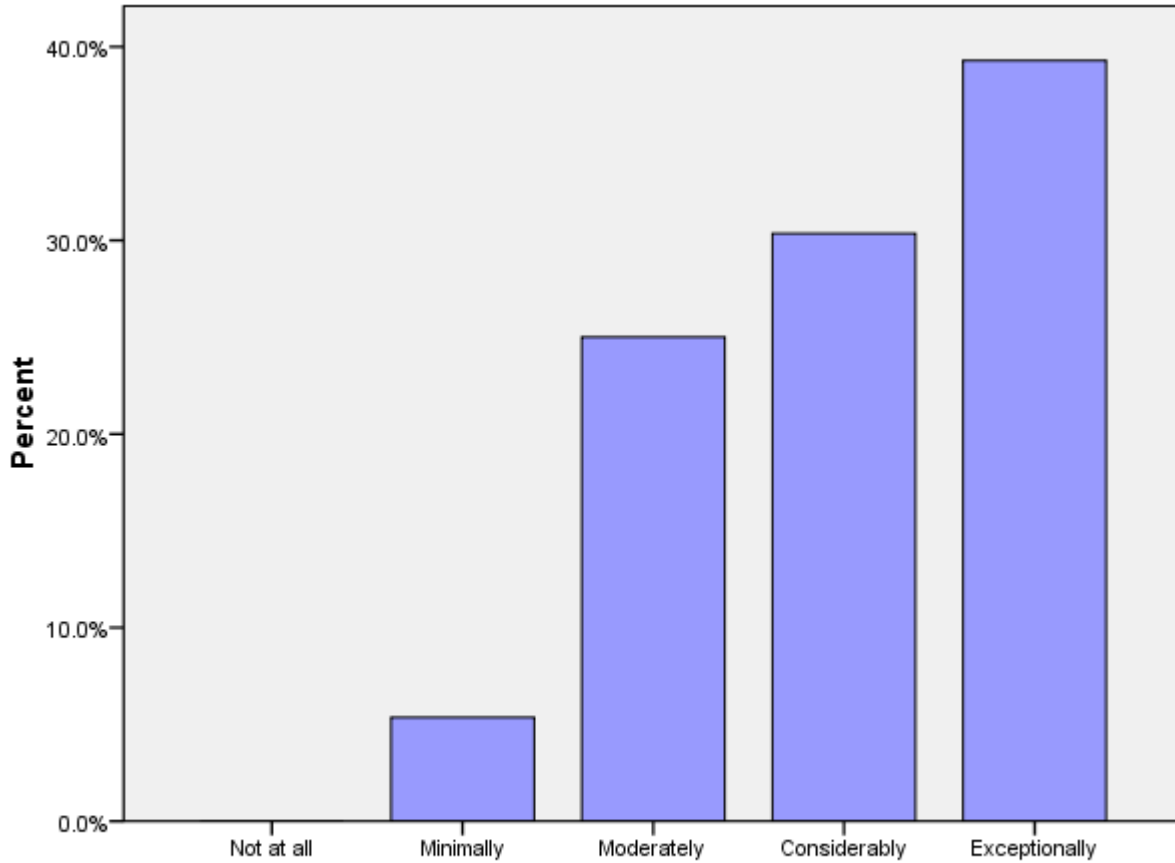
| | Not at all | Minimally | Moderately | Considerably | Exceptionally | Total |
|-----|------------|-----------|------------|--------------|---------------|-------|
| J1B | | 4% | 18% | 30% | 48% | 56 |



J1b: How personally rewarding do you find your community involvement?

J1c: How personally rewarding do you find your experience with other Volunteers?

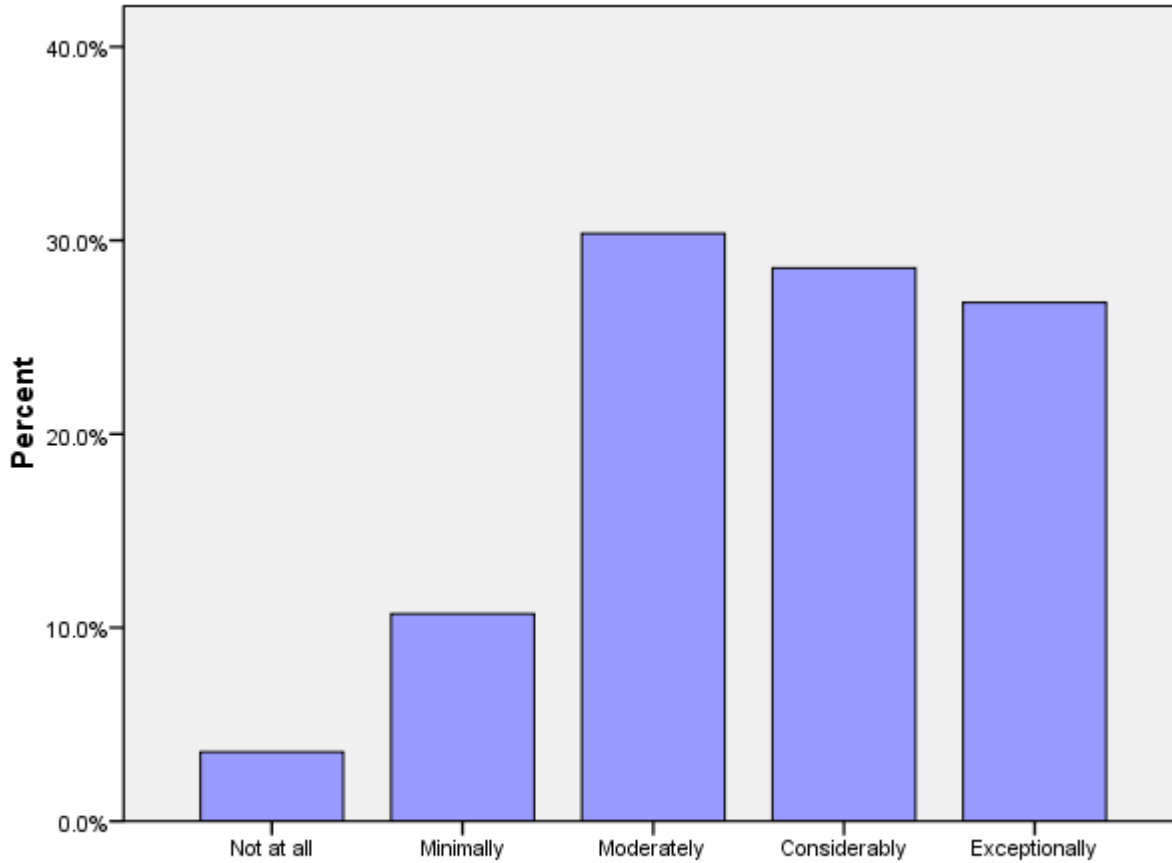
| | Not at all | Minimally | Moderately | Considerably | Exceptionally | Total |
|-----|------------|-----------|------------|--------------|---------------|-------|
| J1C | | 5% | 25% | 30% | 39% | 56 |



J1c: How personally rewarding do you find your experience with other Volunteers?

J1d: How personally rewarding do you find your work with counterparts/community partners?

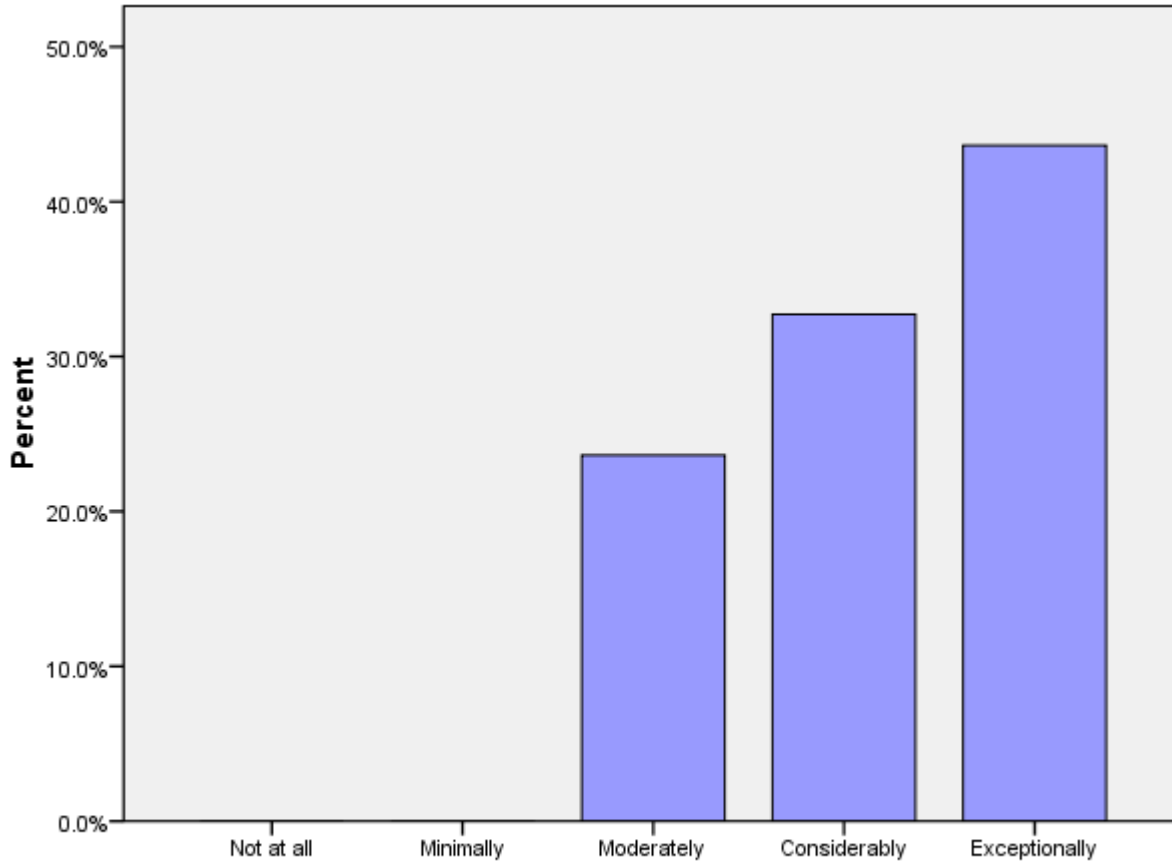
| | Not at all | Minimally | Moderately | Considerably | Exceptionally | Total |
|-----|------------|-----------|------------|--------------|---------------|-------|
| J1D | 4% | 11% | 30% | 29% | 27% | 56 |



J1d: How personally rewarding do you find your work with counterparts/community partners?

J1e: How personally rewarding do you find your experience with other HCNs?

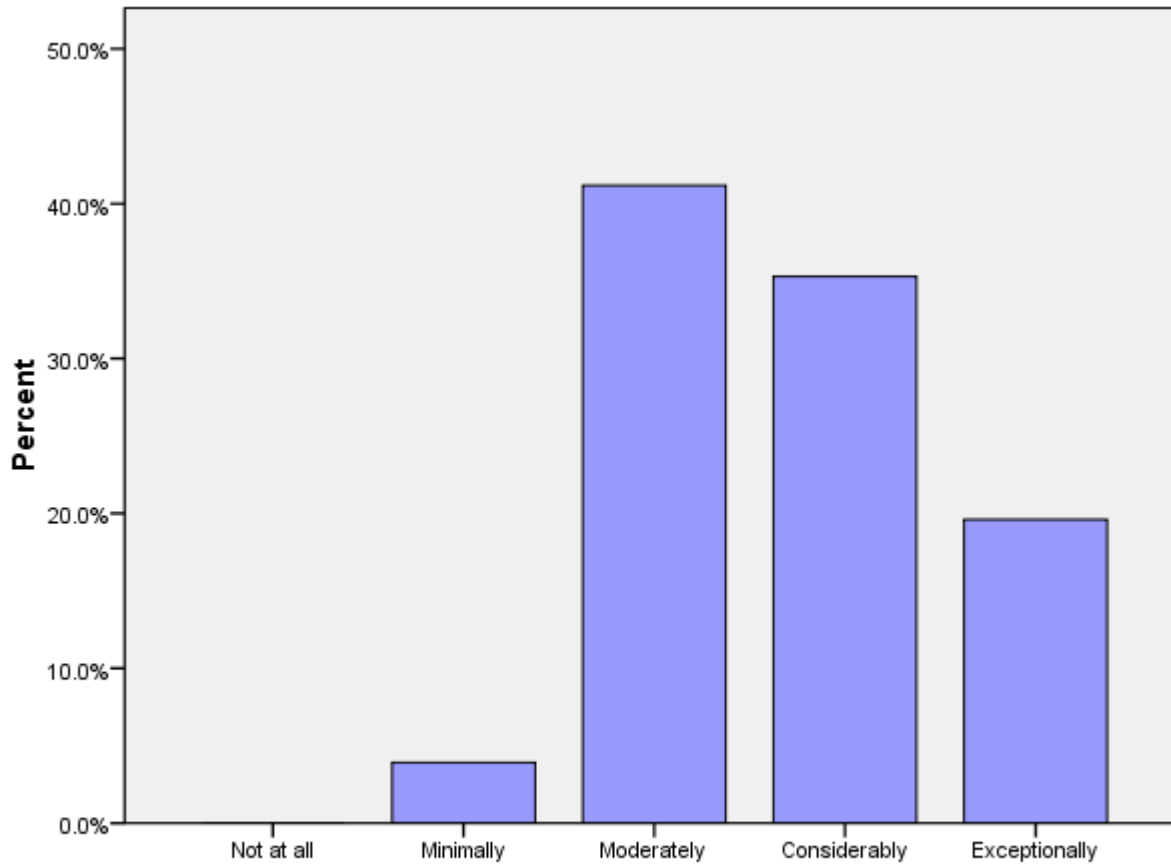
| | Not at all | Minimally | Moderately | Considerably | Exceptionally | Total |
|-----|------------|-----------|------------|--------------|---------------|-------|
| J1E | | | 24% | 33% | 44% | 55 |



J1e: How personally rewarding do you find your experience with other HCNs?

J2a (PCVs at post 9 months+ months): Please rate how well you think you achieved Goal 1.

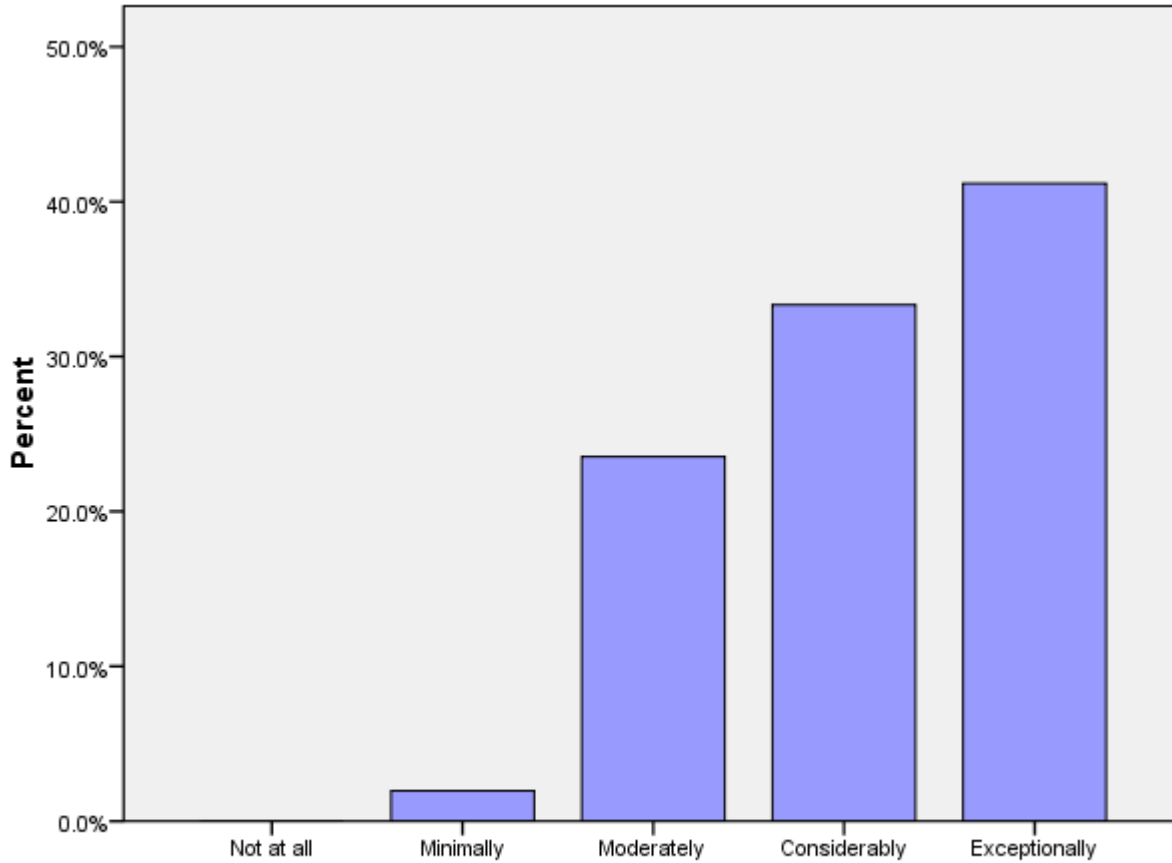
| | Not at all | Minimally | Moderately | Considerably | Exceptionally | Total |
|-----|------------|-----------|------------|--------------|---------------|-------|
| J2A | | 4% | 41% | 35% | 20% | 51 |



J2a (PCVs at post 9 months+ months): Rate how well you think you achieved Goal 1.

J2b: (PCVs at post 9 months+ months): Please rate how well you think you achieved Goal 2.

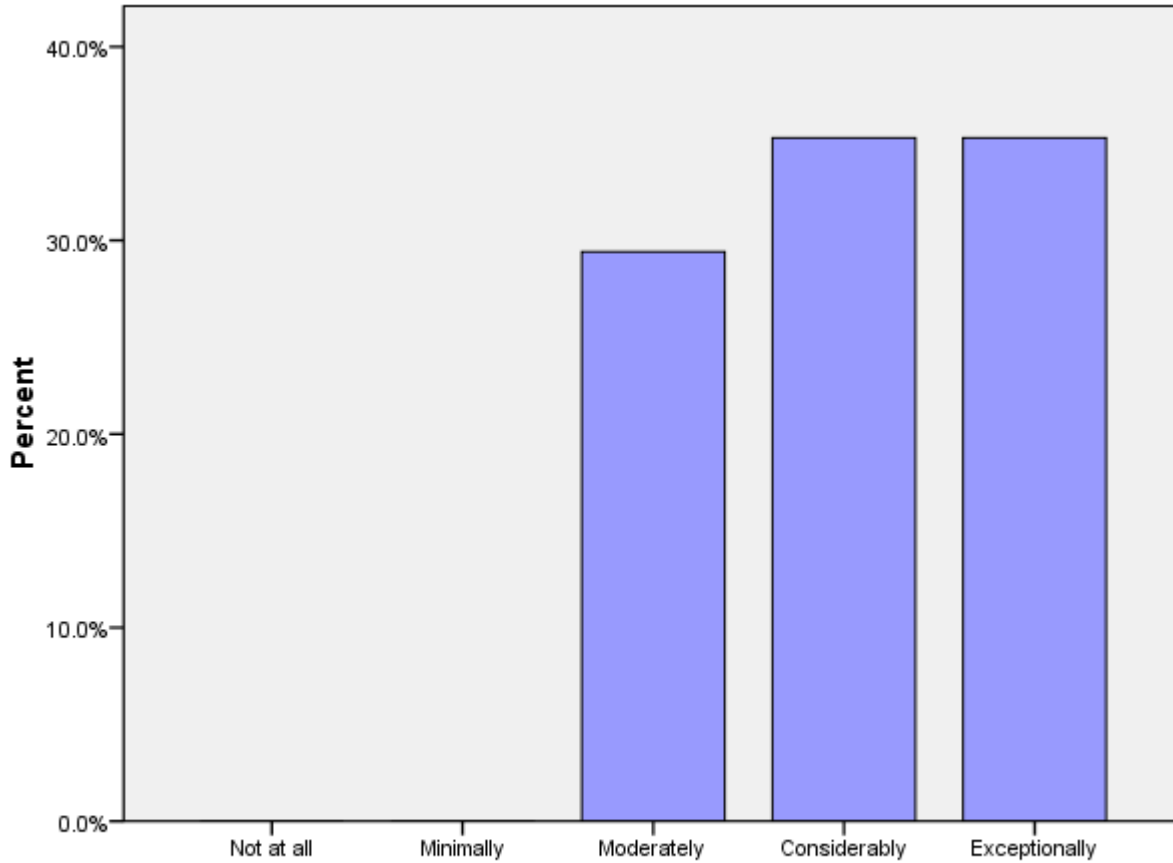
| | Not at all | Minimally | Moderately | Considerably | Exceptionally | Total |
|-----|------------|-----------|------------|--------------|---------------|-------|
| J2B | | 2% | 24% | 33% | 41% | 51 |



J2b (PCVs at post 9 months+ months): Rate how well you think you achieved Goal 2.

J2c (PCVs at post 9 months+ months): Please rate how well you think you achieved Goal 3.

| | Not at all | Minimally | Moderately | Considerably | Exceptionally | Total |
|-----|------------|-----------|------------|--------------|---------------|-------|
| J2C | | | 29% | 35% | 35% | 51 |



J2c (PCVs at post 9 months+ months): Please rate how well you think you achieved Goal 3.

J3: Today, would you make the same decision to join the Peace Corps?

| | No | Not likely | Possibly | Probably | Definitely | Total |
|----|----|------------|----------|----------|------------|-------|
| J3 | | 2% | 5% | 7% | 86% | 56 |

J4: Would you recommend Peace Corps service to others you think are qualified?

| | No | Not likely | Possibly | Probably | Definitely | Total |
|----|----|------------|----------|----------|------------|-------|
| J4 | | | 5% | 12% | 82% | 56 |

J5: Do you intend to complete your Peace Corps service?

| | No | Not sure | Yes | Might extend | Total |
|----|----|----------|-----|--------------|-------|
| J5 | | | 79% | 21% | 56 |

J6: Would your host country benefit most if the Peace Corps program was---?

| | Discontinued | Reduced | Refocused/redesig ned | Maintained as is | Expanded | Total |
|----|--------------|---------|--------------------------|------------------|----------|-------|
| J6 | | 5% | 46% | 32% | 16% | 56 |

K. Activities After Peace Corps Service

This section reports on Volunteers' plans for after they have completed their Peace Corps Service.

K1: What are your plans after your Peace Corps service? Work in government.

| Government | | | |
|-------------|----------------------|--------------------|---|
| In the U.S. | In your host country | In another country | N |
| 100% | 0% | 25% | 4 |

* Percent of cases was used. Percentages will be greater than 100 since Volunteers were asked to select all that applied.

K1: What are your plans after your Peace Corps service? Work in the private sector.

| Private Sector | | | |
|----------------|----------------------|--------------------|----|
| In the U.S. | In your host country | In another country | N |
| 85% | 8% | 8% | 13 |

* Percent of cases was used. Percentages will be greater than 100 since Volunteers were asked to select all that applied.

K1: What are your plans after your Peace Corps service? Work for an NGO.

| NGO | | | |
|-------------|----------------------|--------------------|---|
| In the U.S. | In your host country | In another country | N |
| 60% | 20% | 20% | 5 |

* Percent of cases was used. Percentages will be greater than 100 since Volunteers were asked to select all that applied.

K1: What are your plans after your Peace Corps service? Work for PC

Response.

| Peace Corps Response | | | |
|----------------------|----------------------|--------------------|---|
| In the U.S. | In your host country | In another country | N |
| 50% | 50% | 100% | 2 |

* Percent of cases was used. Percentages will be greater than 100 since Volunteers were asked to select all that applied.

K1: What are your plans after your Peace Corps service? Continue to participate in volunteer activities.

| Volunteer Activities | | | |
|----------------------|----------------------|--------------------|----|
| In the U.S. | In your host country | In another country | N |
| 86% | 14% | 0% | 14 |

* Percent of cases was used. Percentages will be greater than 100 since Volunteers were asked to select all that applied.

K1: What are your plans after your Peace Corps service? Graduate school/academic credentialing.

| Graduate School | | | |
|-----------------|----------------------|--------------------|----|
| In the U.S. | In your host country | In another country | N |
| 94% | 0% | 6% | 18 |

* Percent of cases was used. Percentages will be greater than 100 since Volunteers were asked to select all that applied.

K1: What are your plans after your Peace Corps service? Travel.

| Travel | | | |
|-------------|----------------------|--------------------|----|
| In the U.S. | In your host country | In another country | N |
| 57% | 17% | 70% | 23 |

* Percent of cases was used. Percentages will be greater than 100 since Volunteers were asked to select all that applied.

K1: What are your plans after your Peace Corps service? Other.

| Other | | | |
|-------------|----------------------|--------------------|---|
| In the U.S. | In your host country | In another country | N |
| 100% | 50% | 0% | 2 |

* Percent of cases was used. Percentages will be greater than 100 since Volunteers were asked to select all that applied.

K2: How prepared do you feel to share your Peace Corps experience and knowledge of your host country with others in the United States when you return?

| | Not at all | Minimally | Moderately | Considerably | Total |
|--|------------|-----------|------------|--------------|-------|
| How prepared do you feel to share your Peace Corps experience and knowledge of your host country with others in the United States when you return? | 0% | 0% | 26% | 74% | 31 |

K3: How well do you feel Peace Corps has prepared you for life in the U. S. after you return?

| | Not at all | Minimally | Moderately | Considerably | Exceptionally | Total |
|--|------------|-----------|------------|--------------|---------------|-------|
| How well do you feel Peace Corps has prepared you for life in the U. S. after your return? | 7% | 13% | 47% | 13% | 20% | 30 |

K6: Have your life/career goals changed because of your Peace Corps service?

| | No | Yes | Total |
|--|-----|-----|-------|
| Have your life/career goals changed because of your Peace Corps service? | 48% | 52% | 31 |

K7: How well informed are you about the following opportunities for returned Volunteers:

| | Not informed | Somewhat informed | Well informed | N |
|--|--------------|-------------------|---------------|----|
| Peace Corps Response | 47% | 47% | 7% | 30 |
| Peace Corps' Fellows/USA program | 13% | 60% | 27% | 30 |
| Noncompetitive eligibility | 37% | 50% | 13% | 30 |
| RPCV Career Center in Washington, D.C. | 47% | 43% | 10% | 30 |
| Returned Volunteer Services | 43% | 47% | 10% | 30 |

K8: How did you first learn about the Fellows/USA program?

| | | | |
|---------------------------------|--|-----|----|
| Learn about Fellows/USA program | PC Website | 65% | |
| | At PST | 23% | |
| | Word of mouth | 23% | |
| | From a recruiter | 15% | |
| | Mid-service mailing from PC | 12% | |
| | At COS Conference | 12% | |
| | University website | 12% | |
| | At post's information resource center | 8% | |
| | From staff in the host country's PC office | 8% | |
| | At IST | 4% | |
| | Other | 4% | |
| | Hotline | 0% | |
| | N | | 26 |

* Percent of cases was used. Percentages will be greater than 100 since Volunteers were asked to select all that applied.

**K9: Which of the following resources do you think will be helpful as you exit
Peace Corps service?**

| | | | |
|--------------|---|-----|----|
| K9 Resources | Electronic newsletter with job postings and career advice | 60% | |
| | Applying to federal government with RPCV noncompetitive eligibility | 57% | |
| | Access to free job bulletins | 50% | |
| | RPCV Handbook | 47% | |
| | RPCV career conferences | 47% | |
| | Career Resource Manual | 40% | |
| | Guide to speaking about my PC service to others (third goal) | 37% | |
| | Connection with RPCVs through a mentoring program | 37% | |
| | List of RPCVs willing to talk to me about their careers | 33% | |
| | RPCV job search webinars | 33% | |
| | NOT SURE | 7% | |
| | Self-assessment software (SIGI 3) | 3% | |
| | Other | 3% | |
| | N | | 30 |

* Percent of cases was used. Percentages will be greater than 100 since Volunteers were asked to select all that applied.

K10: Which of the following third goal (helping promote a better understanding of peoples on the part of Americans) activities do you plan to do when you return to the U. S.?

| | | | |
|----------------|---|-----|----|
| K10 Third Goal | Continue with volunteerism and service learning | 73% | |
| | Speak to school age children about my experience | 73% | |
| | Speak to a group of adults about my experience | 73% | |
| | Write stories from my PC service on my own | 57% | |
| | Join a RPCV group | 53% | |
| | Participate in PC Week | 43% | |
| | Write stories from my PC service in conjunction with CWWS | 7% | |
| | Obtain and use PC third goal resources | 7% | |
| | NOT SURE | 3% | |
| | Other | 0% | |
| | N | | 30 |

* Percent of cases was used. Percentages will be greater than 100 since Volunteers were asked to select all that applied.